



LEASING OPPORTUNITY FOR MEDICAL OFFICE SPACE LOCATED IN KINGWOOD

PROFESSIONAL CENTER AT KINGS CROSSING

2815 W LAKE HOUSTON PARKWAY | KINGWOOD, TEXAS 77339

 **TRANSWESTERN**[®]



LEASING OPPORTUNITY FOR MEDICAL OFFICE SPACE LOCATED IN KINGWOOD

PROFESSIONAL CENTER AT KINGS CROSSING

2815 W LAKE HOUSTON PARKWAY | KINGWOOD, TEXAS 77339

PROPERTY DESCRIPTION

24,318 RSF, Class B Medical Office Building
Two-Story suites

LOCATION

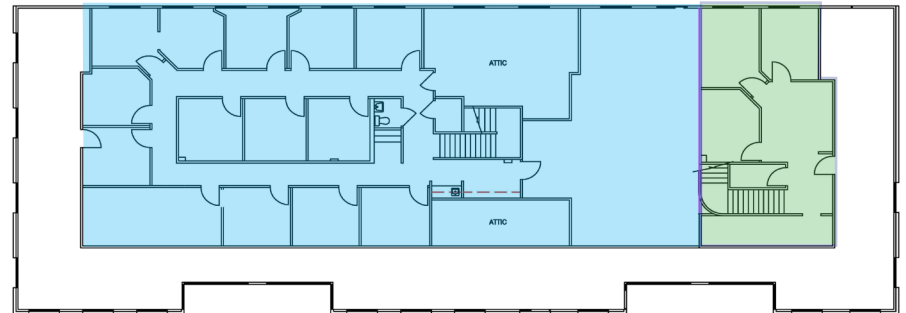
Located near Kingwood Drive and West Lake Houston
Parkway intersection

COMMENTS

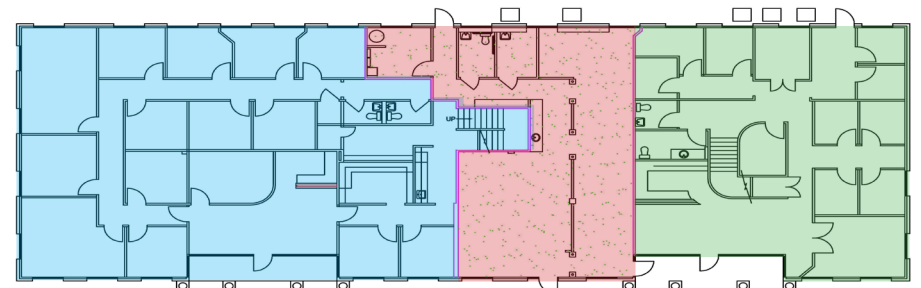
- Numerous retail and hotels within a short distance
- Located near Town Center and Kings Harbor
- Good visibility and ample parking

AVAILABILITY

SUITE	SIZE (1st Flr/2nd Flr)
100	3,468 RSF/ 3,474 RSF
102	1,551 RSF
104	2,170 RSF/ 865 RSF
Total	7,189 RSF/ 4,339 RSF



2nd Floor



1st Floor



1900 West Loop South, Suite 1300
Houston, Texas 77027

T: 713.270.7700 F: 713.270.6285
www.transwestern.com

Christian Connell
Leasing Associate
713.231.1588
christian.connell@transwestern.com

Scott Carter
Vice President
713.270.3363
scott.carter@transwestern.com

Brandy Bellow Spinks
Vice President
713.272.1245
brandy.bellow@transwestern.com