



OBERER

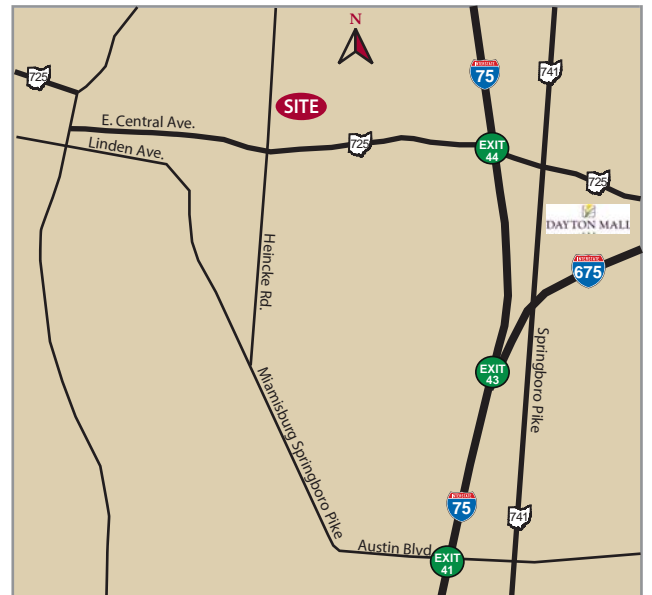
REALTY SERVICES, LTD.

FOR LEASE 726 N. HEINCKE RD. Miamisburg, Ohio 45342



- 1,250 SF FORMER RESATAURANT SPACE AVAILABLE FOR LEASE
- CO-TENANCY WITH AMERISTOP CONVENIENCE STORE (no fuel)
- LOCATED JUST OFF E. CENTRAL (SR 725) on Heincke Rd. at King Richard Parkway, the primary entrance to the Sherwood Forest neighborhood
- PYLON SIGN PANEL available
- WALKIN COOLER & KITCHEN EQUIPMENT in place
- CONTACT DANIELLE KUEHNLE at 937.531.5528 for more information

2015 DEMOGRAPHICS	1 mile	3 mile	5 mile
POPULATION	10,280	45,057	94,509
HH INCOME	\$58,979	\$57,421	\$68,778



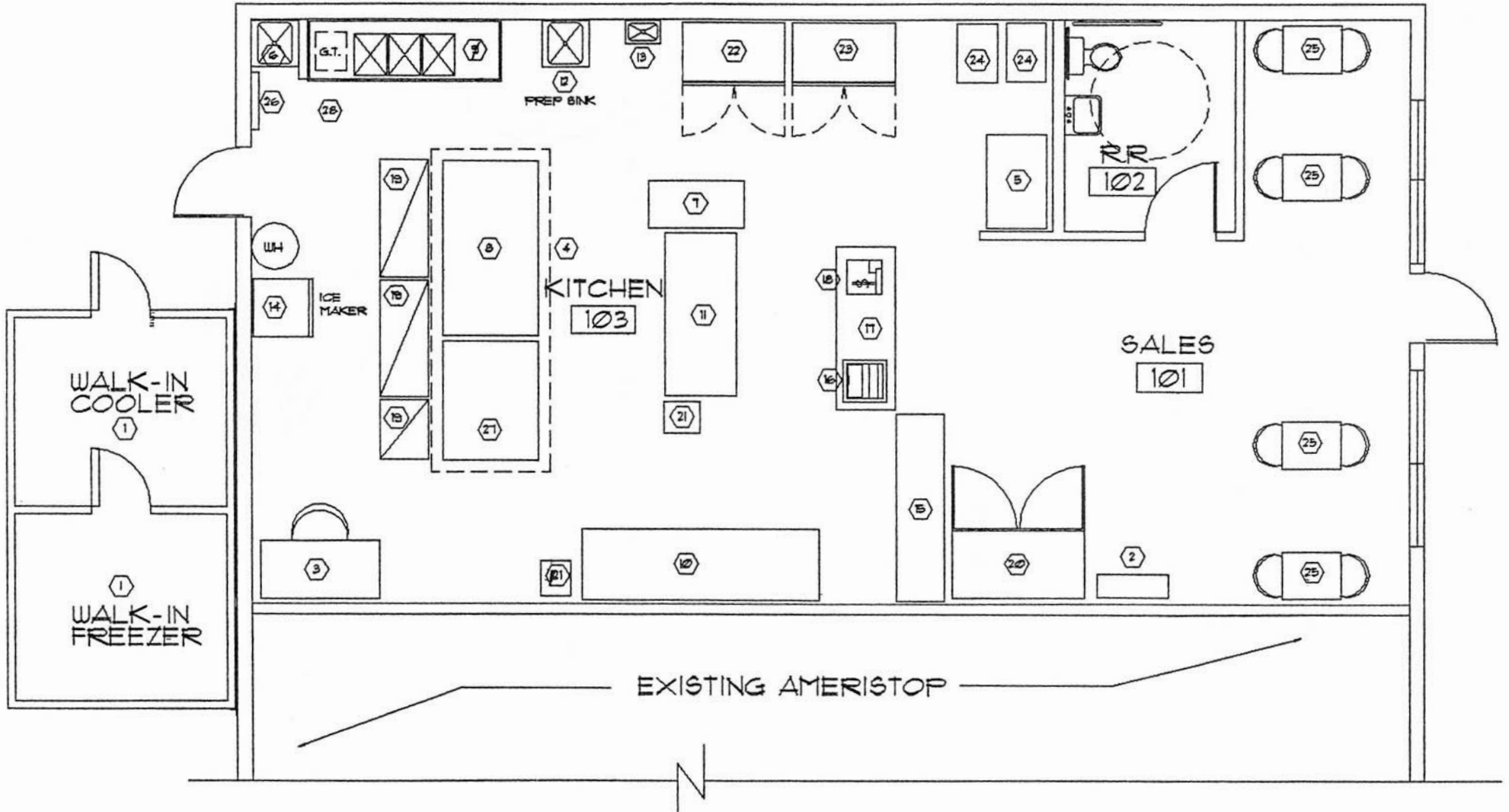
WELCOME TO THE REGION WE KNOW

937-910-0851 • 3445 Newmark Drive, Miamisburg, Ohio 45342 • www.oberer.com/commercial

FOR LEASE
726 N. HEINCKE ROAD
Miamisburg, Ohio 45342



1,250 SF



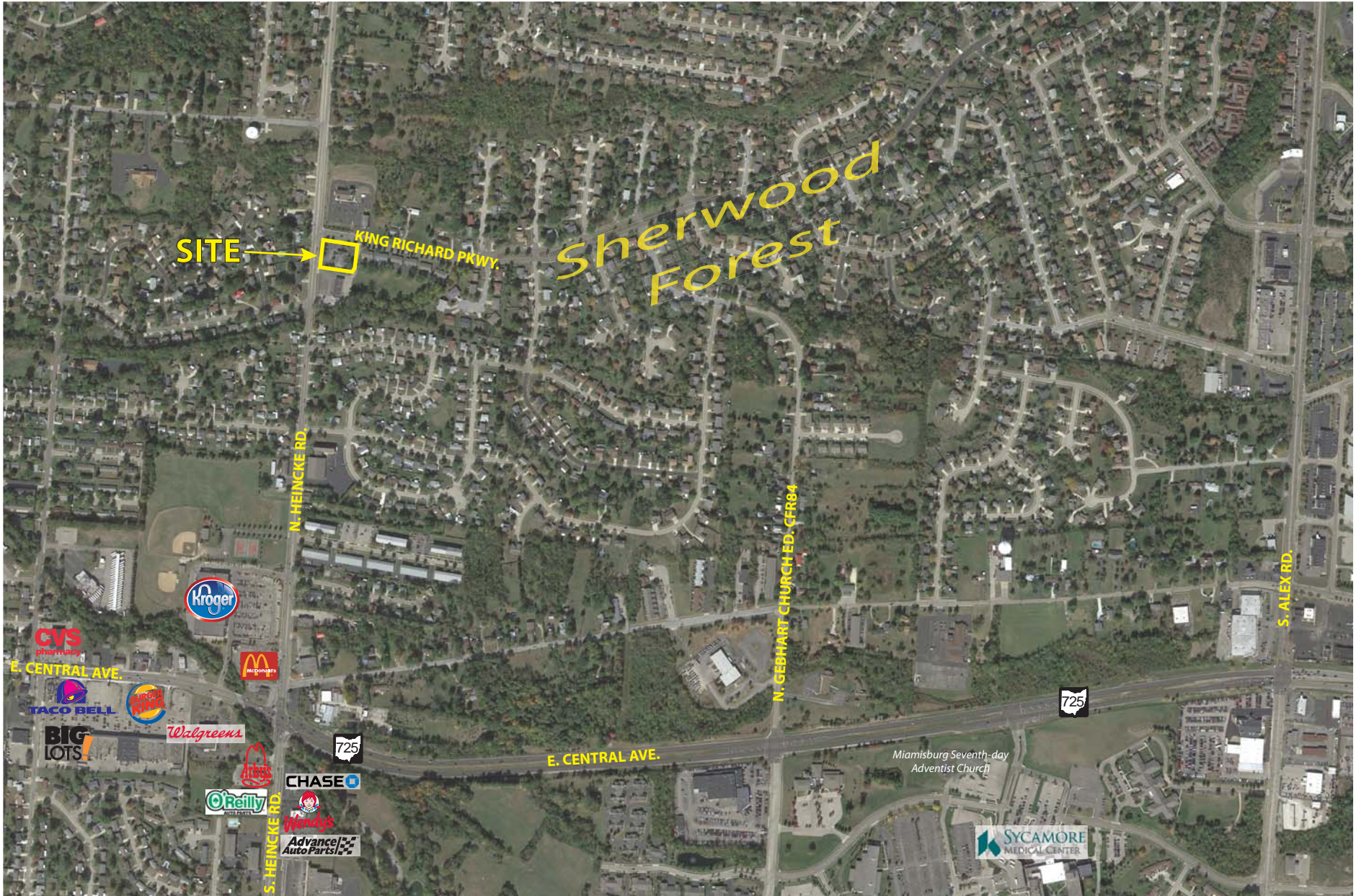
WELCOME TO THE REGION WE KNOW

937-910-0851 • 3445 Newmark Drive, Miamisburg, Ohio 45342 • www.oberer.com/commercial

FOR LEASE

726 N. HEINCKE ROAD

Miamisburg, Ohio 45342



WELCOME TO THE REGION WE KNOW

937-910-0851 • 3445 Newmark Drive, Miamisburg, Ohio 45342 • www.oberer.com/commercial