



±117,254 SF Industrial Space

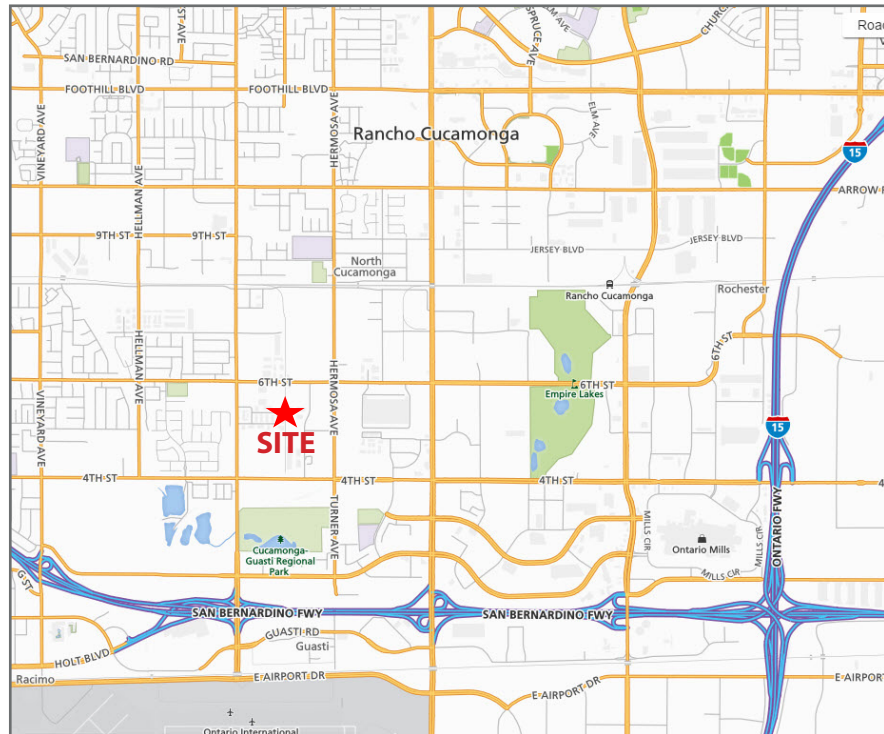
9955 6TH ST. RANCHO CUCAMONGA, CA

FOR SUBLEASE



FEATURES:

- ±117,254 SF Available
- ±4,000 SF Office Space
- 26' Clear Height
- 400 Amps, 277/480 Volts
- 1 Ground Level Door
- 16 Dock High Loading Door
- 117 Parking Spaces
- Renovated in 2014



LEE & ASSOCIATES®

BARRET WOODS

909.373.2921

bwoods@lee-assoc.com

License #01355354

COMMERCIAL REAL ESTATE SERVICES

All information furnished regarding property for sale, rental or financing is from sources deemed reliable, but no warranty or representation is made to the accuracy thereof and same is submitted to errors, omissions, change of price, rental or other conditions prior to sale, lease or financing or withdrawal without notice. No liability of any kind is to be imposed on the broker herein.

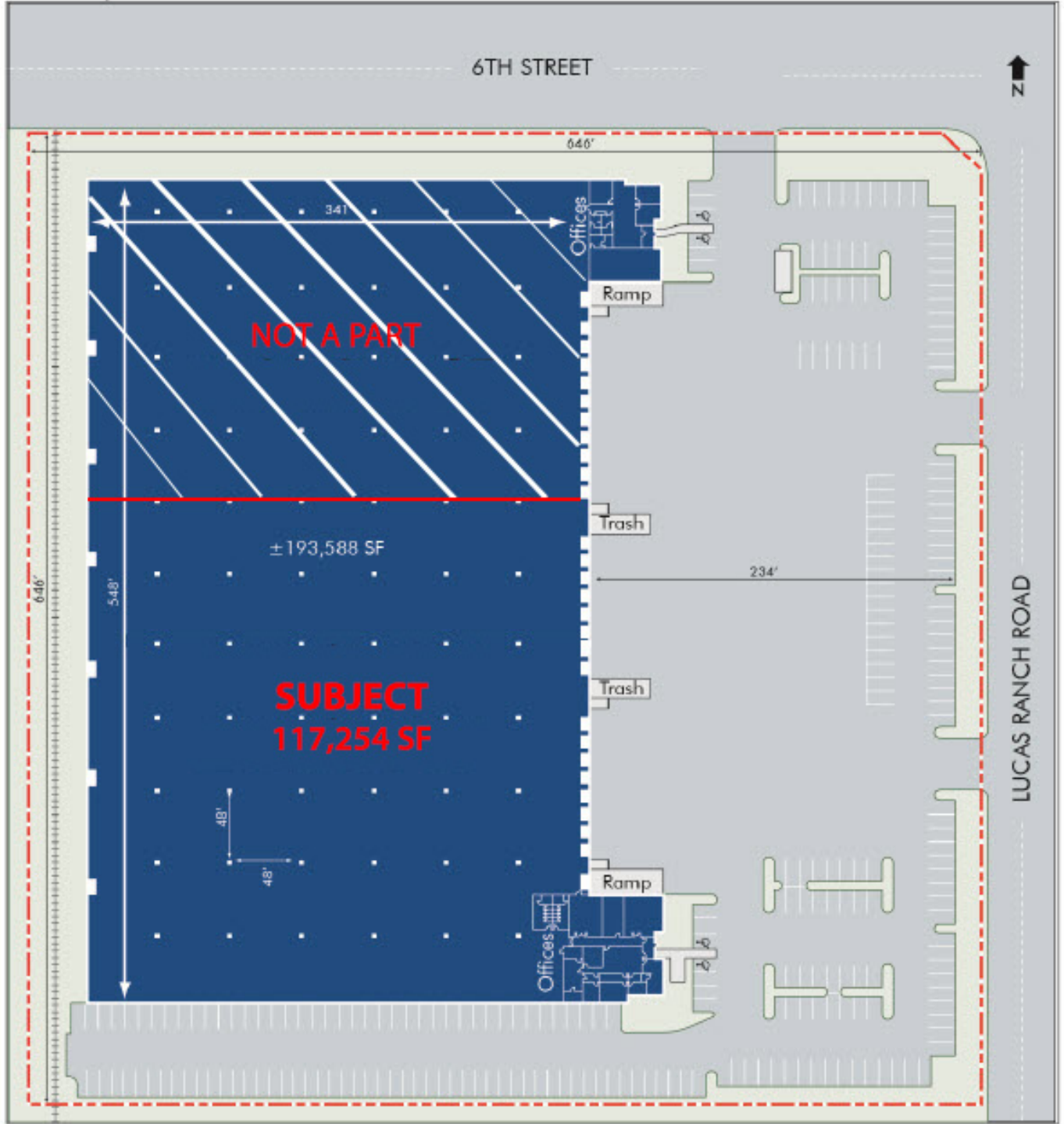
3535 Inland Empire Blvd. • Ontario, CA 91764
ph: 909.989.7771 fx: 909.944.8250
www.lee-assoc.com | Corporate ID # 00976995



±117,254 SF Industrial Space

9955 6TH ST. RANCHO CUCAMONGA, CA

FOR SUBLEASE



LEE & ASSOCIATES®

COMMERCIAL REAL ESTATE SERVICES

BARRET WOODS

909.373.2921

bwoods@lee-assoc.com

License #01355354

All information furnished regarding property for sale, rental or financing is from sources deemed reliable, but no warranty or representation is made to the accuracy thereof and same is submitted to errors, omissions, change of price, rental or other conditions prior to sale, lease or financing or withdrawal without notice. No liability of any kind is to be imposed on the broker herein.

3535 Inland Empire Blvd. • Ontario, CA 91764
ph: 909.989.7771 fx: 909.944.8250
www.lee-assoc.com | Corporate ID # 00976995