

OFFICE SPACE FOR LEASE

615 W. MOUNT PLEASANT AVE

LIVINGSTON, NJ

TOTAL SIZE

20,850 SF

AVAILABLE SPACE

2,727 SF available immediately

1st floor: 1,789 SF

1st floor: 1,807 SF

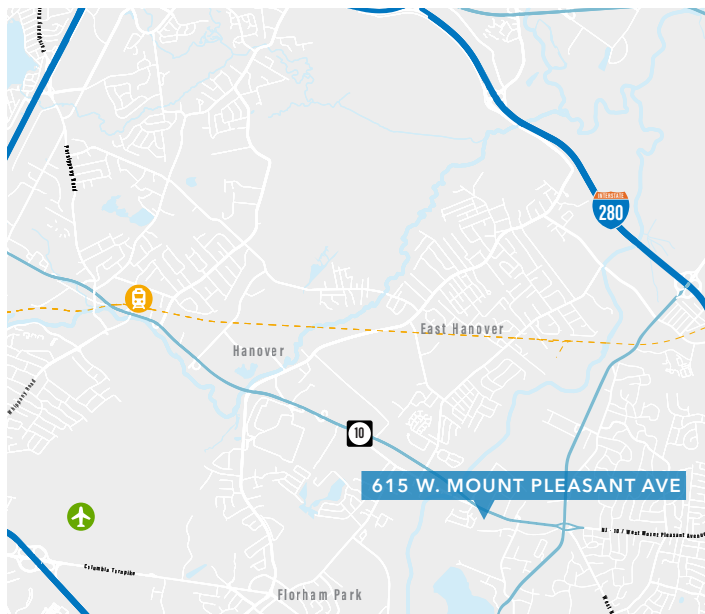
2nd floor: 938 SF

PARKING

5 per 1,000 SF

RENT

\$20.00 + TE



BUILDING HIGHLIGHTS

- Owner occupied
- Abundant parking

LOCATION OVERVIEW

- Direct access to Route 10 East and West
- Located off of the Livingston circle
- Close proximity to Eisenhower Parkway and I-280
- Nearby to hotels, restaurants, banking and retail shopping

LEASING INFORMATION

DOUGLAS ROWE

973.947.9202

douglas.rowe@transwestern.com

LESLIE MERIL

973.947.9238

leslie.meril@transwestern.com

RYAN PRINCE

973.947.9207

ryan.prince@transwestern.com

KERI DEKMAR

973.947.9205

keri.dekmar@transwestern.com

The information provided herein was obtained from sources believed reliable; however, Transwestern makes no guarantees, warranties or representations as to the completeness or accuracy thereof. The presentation of this property is submitted subject to errors, omissions, change of price or conditions, prior sale or lease, or withdrawal without notice. Copyright © 2020 Transwestern.



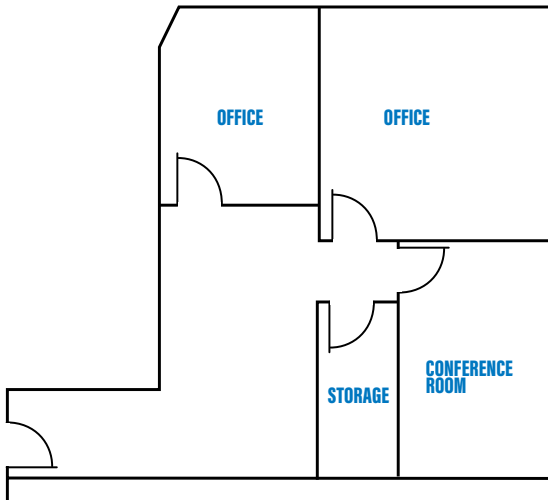
180 PARK AVENUE, 1ST FLOOR | FLORHAM PARK, NJ 07932
T 973.947.9200 www.transwestern.com

OFFICE SPACE FOR LEASE

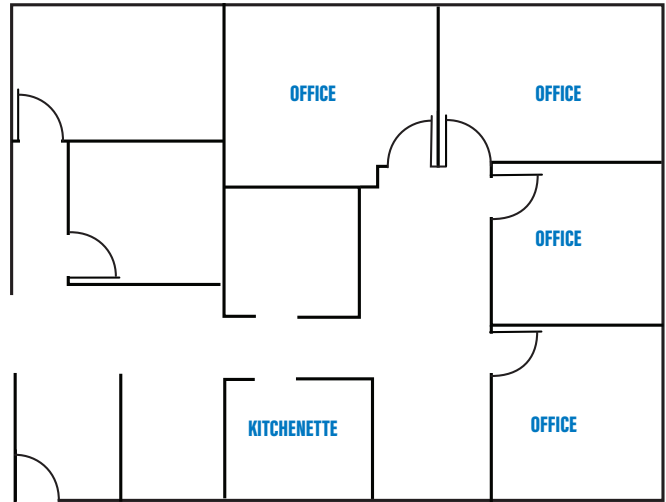
615 W. MOUNT PLEASANT AVE

LIVINGSTON, NJ

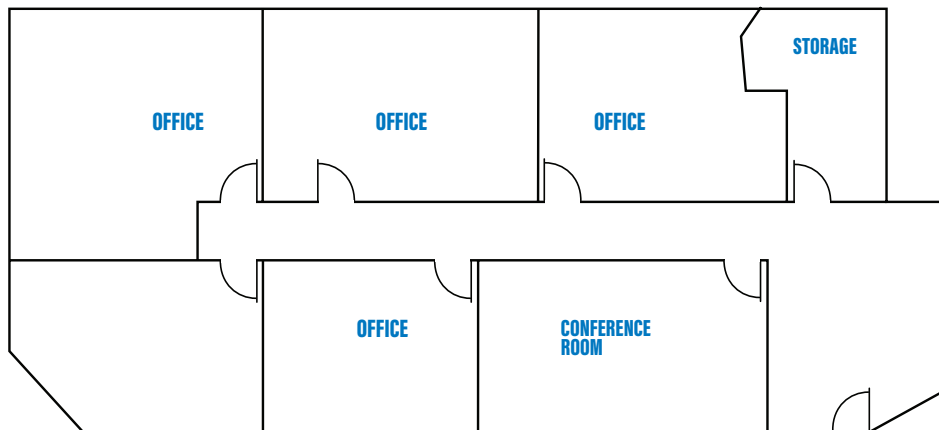
938 SF AVAILABLE



1,807 SF AVAILABLE



1,789 SF AVAILABLE



LEASING INFORMATION

DOUGLAS ROWE

973.947.9202

douglas.rowe@transwestern.com

LESLIE MERIL

973.947.9238

leslie.meril@transwestern.com

RYAN PRINCE

973.947.9207

ryan.prince@transwestern.com

KERI DEKMAR

973.947.9205

keri.dekmar@transwestern.com

The information provided herein was obtained from sources believed reliable; however, Transwestern makes no guarantees, warranties or representations as to the completeness or accuracy thereof. The presentation of this property is submitted subject to errors, omissions, change of price or conditions, prior sale or lease, or withdrawal without notice. Copyright © 2020 Transwestern.