

FOR LEASE

DES MOINES LOGISTICS CENTER

19216 - 19320

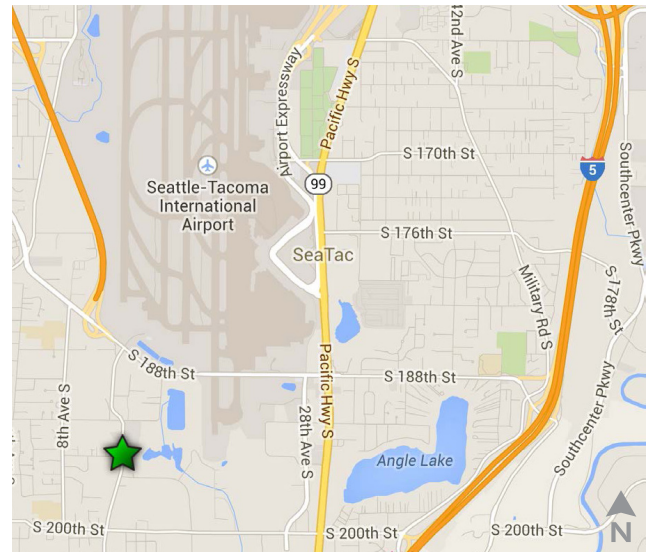
DES MOINES MEMORIAL DRIVE

SeaTac, Washington 98148



FEATURES

- + Suite C550
 - 6,777 SF Shell
 - 2,140 SF Office
- + Large open office layout
- + 24' clear height
- + 3 docks and 1 ramp
- + Available with 30 days' notice
- + Call brokers for rates



CONTACT US

ANDREW STARK

Senior Vice President
+1 206 442 2746
andrew.stark@cbre.com

ANDREW HITCHCOCK

Senior Vice President
+1 206 442 2719
andrew.hitchcock@cbre.com

ZAC SNEDEKER

Senior Associate
+1 206 442 2709
zac.snedeker@cbre.com

CBRE, INC.

1420 5th Ave.
Suite 1700
Seattle, WA 98101

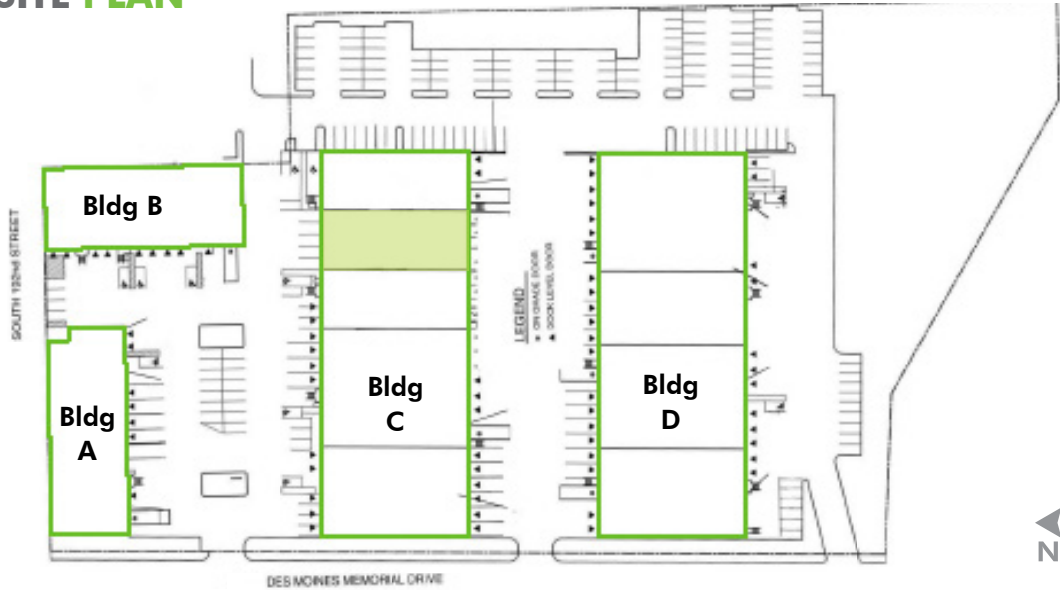
www.cbre.us/seattle

CBRE

FOR LEASE DES MOINES LOGISTICS CENTER

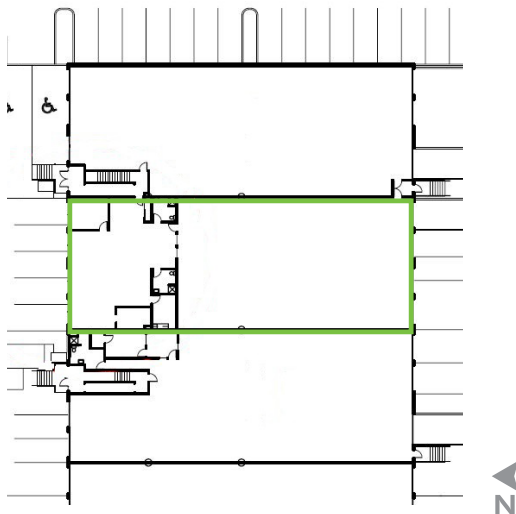
19216-19320
DES MOINES MEMORIAL DR.
SeaTac, Washington 98148

SITE PLAN



FLOOR PLAN

Building C, Suite 500



© 2018 CBRE, Inc. All rights reserved. This information has been obtained from sources believed reliable, but has not been verified for accuracy or completeness. Any projections, opinions, or estimates are subject to uncertainty. The information may not represent the current or future performance of the property. You and your advisors should conduct a careful, independent investigation of the property and verify all information. Any reliance on this information is solely at your own risk. CBRE and the CBRE logo are service marks of CBRE, Inc. and/or its affiliated or related companies in the United States and other countries. All other marks displayed on this document are the property of their respective owners. Photos herein are the property of their respective owners and use of these images without the express written consent of the owner is prohibited. GH 11.30.2018