



# GREYSTONE II

7320 N. MOPAC EXPRESSWAY | AUSTIN, TX 78731

NEWLY RENOVATED COMMON AREAS

NORTH 7320 MOPAC

FOR LEASING INFORMATION, CONTACT

**CHERYL SMITH**

(512) 736.4778

cheryl.smith@kuceraco.com

**MAX APPLING**

(512) 299.6296

max.appling@kuceraco.com

**2,421 RSF**

SUITE 100

**OFFICE SPACE FOR LEASE**

**\$19.50/SF**

2017 NNN \$11.81

7200 N. MOPAC EXPRESSWAY | AUSTIN, TX 78731 | (512) 346-0025 | See all of our listings at [WWW.KUCERACO.COM](http://WWW.KUCERACO.COM).

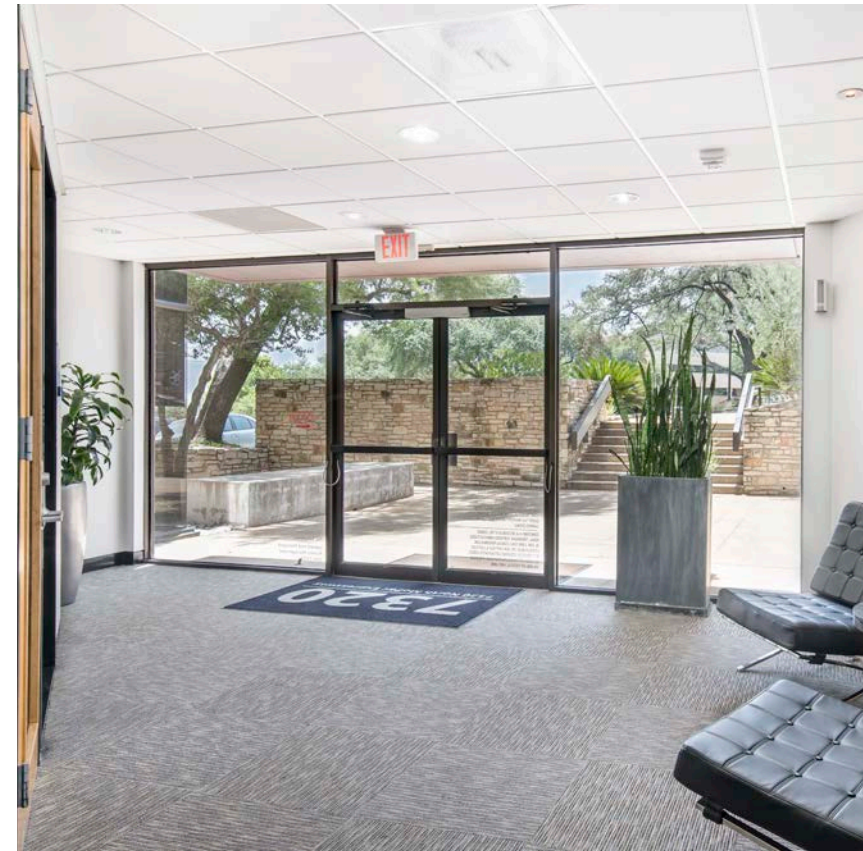
All information contained herein, while based on information deemed reliable, has been gathered from various third-party sources, is not in any way warranted by The Kucera Companies, may not be entirely complete or accurate, and is subject to corrections, errors and/or omissions. This listing is subject to prior sale, lease, change in price and/or removal from the market without notice. The user of any information contained herein should conduct his/her own independent research including, without limitation, obtaining its own counsel and the advice of a real estate professional.



# GREYSTONE II

7320 N. MOPAC EXPRESSWAY | AUSTIN, TX 78731

NEWLY RENOVATED COMMON AREAS



FOR LEASING INFORMATION, CONTACT

**CHERYL SMITH**

(512) 736.4778

cheryl.smith@kuceraco.com

**MAX APPLING**

(512) 299.6296

max.appling@kuceraco.com

**2,421 RSF**

SUITE 100

**OFFICE SPACE FOR LEASE**

**\$19.50/SF**

2017 NNN \$11.81

7200 N. MOPAC EXPRESSWAY | AUSTIN, TX 78731 | (512) 346-0025 | See all of our listings at [WWW.KUCERACO.COM](http://WWW.KUCERACO.COM).

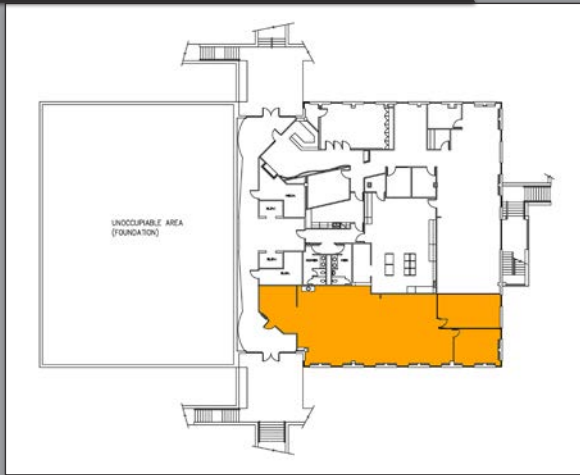
All information contained herein, while based on information deemed reliable, has been gathered from various third-party sources, is not in any way warranted by The Kucera Companies, may not be entirely complete or accurate, and is subject to corrections, errors and/or omissions. This listing is subject to prior sale, lease, change in price and/or removal from the market without notice. The user of any information contained herein should conduct his/her own independent research including, without limitation, obtaining its own counsel and the advice of a real estate professional.

# GREYSTONE II

7320 N. MOPAC EXPRESSWAY | AUSTIN, TX 78731







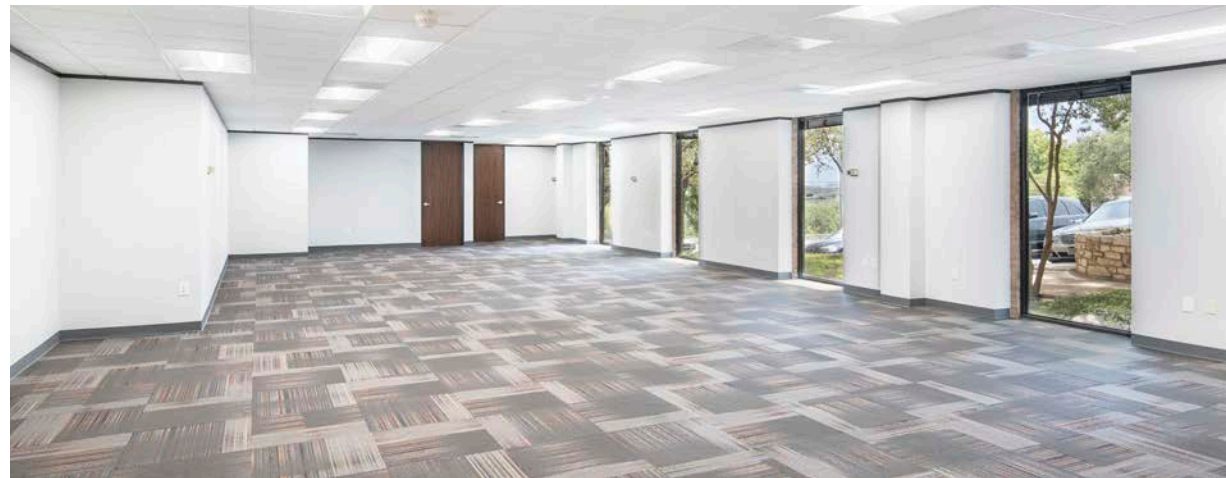
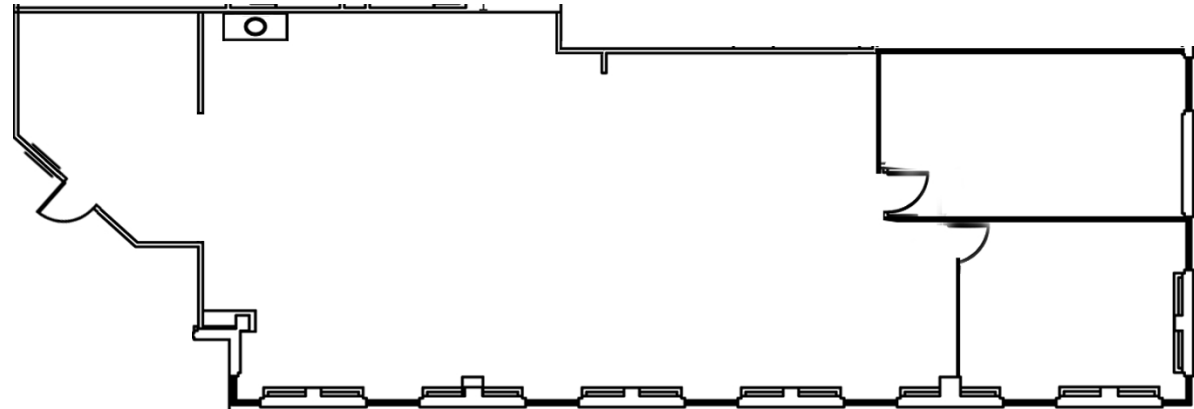
## SUITE LOCATION



## PROPERTY FEATURES

### 'SPEC' BUILD-OUT COMPLETE, INCLUDING:

-  New paint and carpet
-  New break room
-  New and upgraded ceiling tiles, LED lighting and doors
-  Reconfigured suite entrance with glass insert and side light



### FOR LEASING INFORMATION, CONTACT

**CHERYL SMITH**

(512) 736.4778

cheryl.smith@kuceraco.com

**MAX APPLING**

(512) 299.6296

max.appling@kuceraco.com

**2,421 RSF**

SUITE 100

**OFFICE SPACE FOR LEASE**

**\$19.50/SF**

2017 NNN \$11.81

7200 N. MOPAC EXPRESSWAY | AUSTIN, TX 78731 | (512) 346-0025 | See all of our listings at [WWW.KUCERACO.COM](http://WWW.KUCERACO.COM).

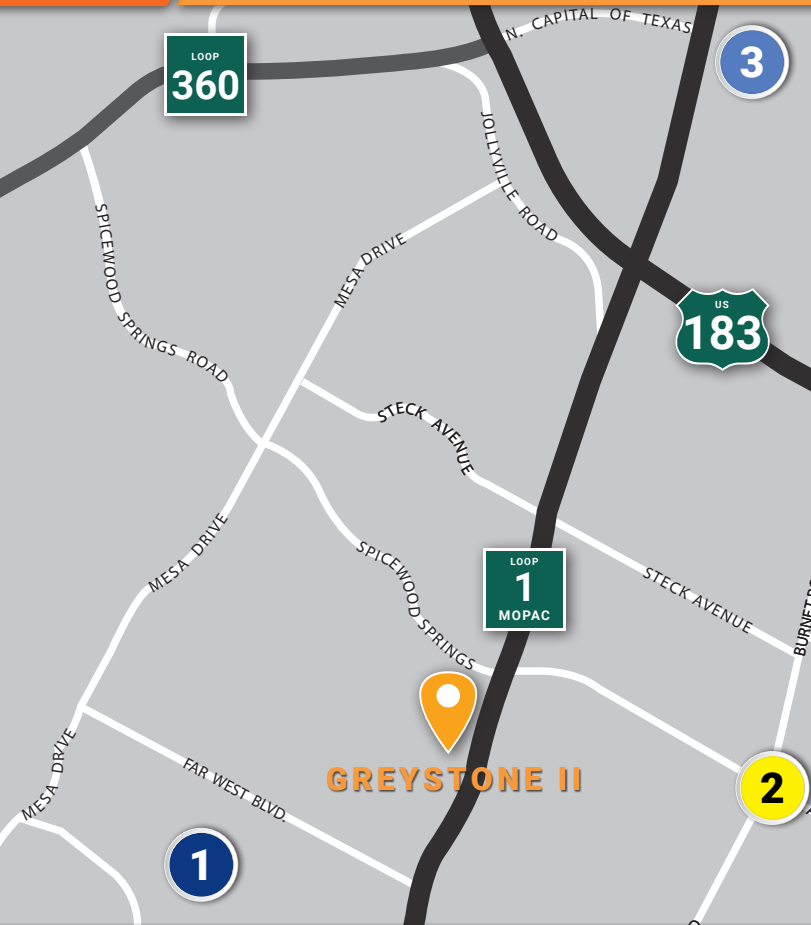
All information contained herein, while based on information deemed reliable, has been gathered from various third-party sources, is not in any way warranted by The Kucera Companies, may not be entirely complete or accurate, and is subject to corrections, errors and/or omissions. This listing is subject to prior sale, lease, change in price and/or removal from the market without notice. The user of any information contained herein should conduct his/her own independent research including, without limitation, obtaining its own counsel and the advice of a real estate professional.

# GREYSTONE II

7320 N. MOPAC EXPRESSWAY | AUSTIN, TX 78731

## NEWLY RENOVATED COMMON AREAS

## NEARBY AMENITIES



### 1 GREYSTONE & FAR WEST BLVD.

- Austin Terrier
- Chinatown
- Pizza Hut
- Snap Kitchen
- Post Office
- Wendy's
- Starbucks
- HEB
- Wells Fargo Bank
- Quizno's
- Gatti's Pizza
- The UPS Store
- Boulevard Bar & Grill
- Saffron
- La Salsa Mexican Grill
- Bert's BBQ
- Daily Juice Cafe
- Newworld Cafe
- Hao-Q Asian Kitchen
- Frost Bank
- Kneaded Pleasures

### 2 ANDERSON LANE

- Tarka Indian Kitchen
- Dos Batos Woodfired Tacos
- Which Which Superior Sandwiches
- Sonic Drive-in
- Panda Express
- Wal-Mart Supercenter
- Anytime Fitness
- Zen Japanese
- Cover 3
- Hopdoddy Burger Bar
- Bartlett's
- Starbucks
- Whataburger
- Madam Mam's
- Epoch Coffee
- Office Depot
- Alamo Drafthouse Cinema
- CVS
- The Goodnight
- Bank of America
- Einstein Bros Bagels
- Sorrento's Coffee

### 3 THE SHOPS AT ARBOR WALK

- The Home Depot
- BJ's Restaurant
- Sam Moon
- Marshall's
- DSW Designer Shoe Warehouse
- DressBarn
- Chipotle Mexican Grill
- Mattress Firm
- Scottrade
- Carter's
- Sprint Store
- Skechers Factory Outlet
- Alfred Angelo Bridal
- Masala Wok
- Plato's Closet
- Salata
- Jo-Ann Fabrics
- Spec's
- Natural Grocers
- Lupe Tortilla
- Firestone Tires
- Mimi's Cafe

FOR LEASING INFORMATION, CONTACT

**CHERYL SMITH**

(512) 736.4778

cheryl.smith@kuceraco.com

**MAX APPLING**

(512) 299.6296

max.appling@kuceraco.com

**2,421 RSF**

SUITE 100

**OFFICE SPACE FOR LEASE**

**\$19.50/SF**

2017 NNN \$11.81

7200 N. MOPAC EXPRESSWAY | AUSTIN, TX 78731 | (512) 346-0025 | See all of our listings at [WWW.KUCERACO.COM](http://WWW.KUCERACO.COM).

All information contained herein, while based on information deemed reliable, has been gathered from various third-party sources, is not in any way warranted by The Kucera Companies, may not be entirely complete or accurate, and is subject to corrections, errors and/or omissions. This listing is subject to prior sale, lease, change in price and/or removal from the market without notice. The user of any information contained herein should conduct his/her own independent research including, without limitation, obtaining its own counsel and the advice of a real estate professional.