

1

# MILK STREET

DOWNTOWN CROSSING

BOSTON



THE  
**DARTMOUTH**  
 COMPANY  
[www.dartco.com](http://www.dartco.com)  
 617.262.6620

Jenny Hart  
 617.369.5910  
[jhart@dartco.com](mailto:jhart@dartco.com)

Lindsey Sandell  
 617.369.5936  
[lsandell@dartco.com](mailto:lsandell@dartco.com)


**SIZE** | 3,450 SF





## FACTS

- 3,450 SF of double height lower level space with dedicated retail storefront on the street level
- Located in the heart of Boston's Downtown Crossing area surrounded by over 36 million square feet of office space
- A short distance from Faneuil Hall with 18 million visitors annually & Boston's Freedom Trail with 4 million visitors annually
- The corner of Washington Street & Milk Street sees one of the highest pedestrian traffic counts in the City of Boston
- In the center of Downtown Crossing's retail and dining district, which has added dozens of new stores and restaurants over the past few years including Old Navy, Gap Factory Store, Caffe Nero, Luke's Lobster, Legal Crossing, Sweetgreen and Forever 21.
- Entire building will be renovated on the interior and exterior on both the Milk and Washington Street sides
- Located a short walk from Boston's only Macy's and Primark stores

## TRANSPORTATION INFORMATION

 Downtown Crossing (23,478 daily ridership)

 State Street (12,500 daily ridership)

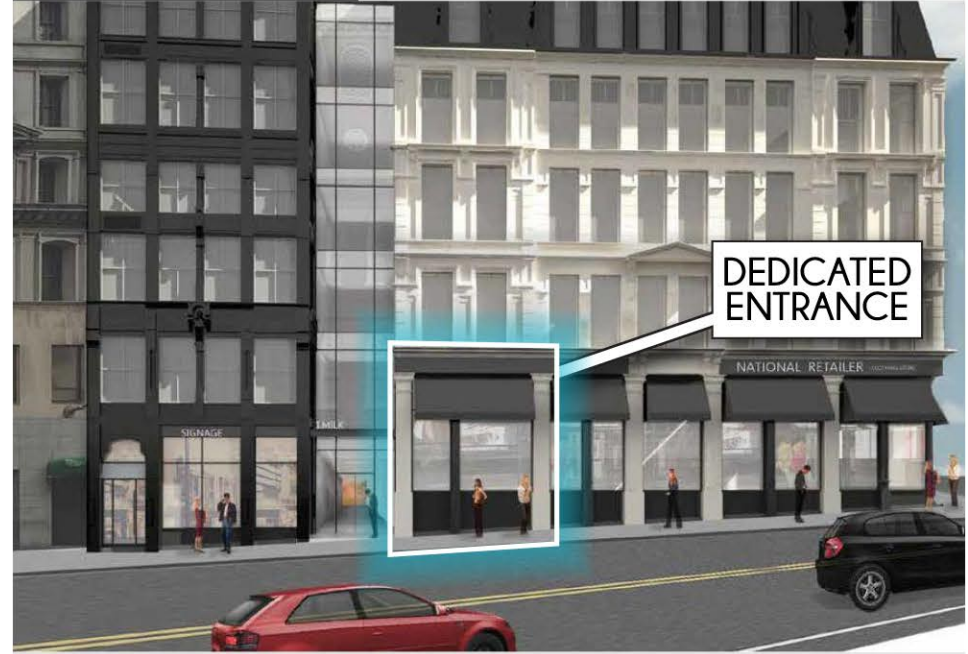
 40,000 pedestrians/day

	.25 MILE	.5 MILE	1 MILE
<b>Daytime Population</b>	63,193	169,428	314,554
<b>Population</b>	5,128	20,567	59,916
<b>Avg HH Income</b>	\$180,681	\$135,067	\$137,167

## CONSTRUCTION PROGRESS



## MILK STREET ELEVATION



## AVAILABLE

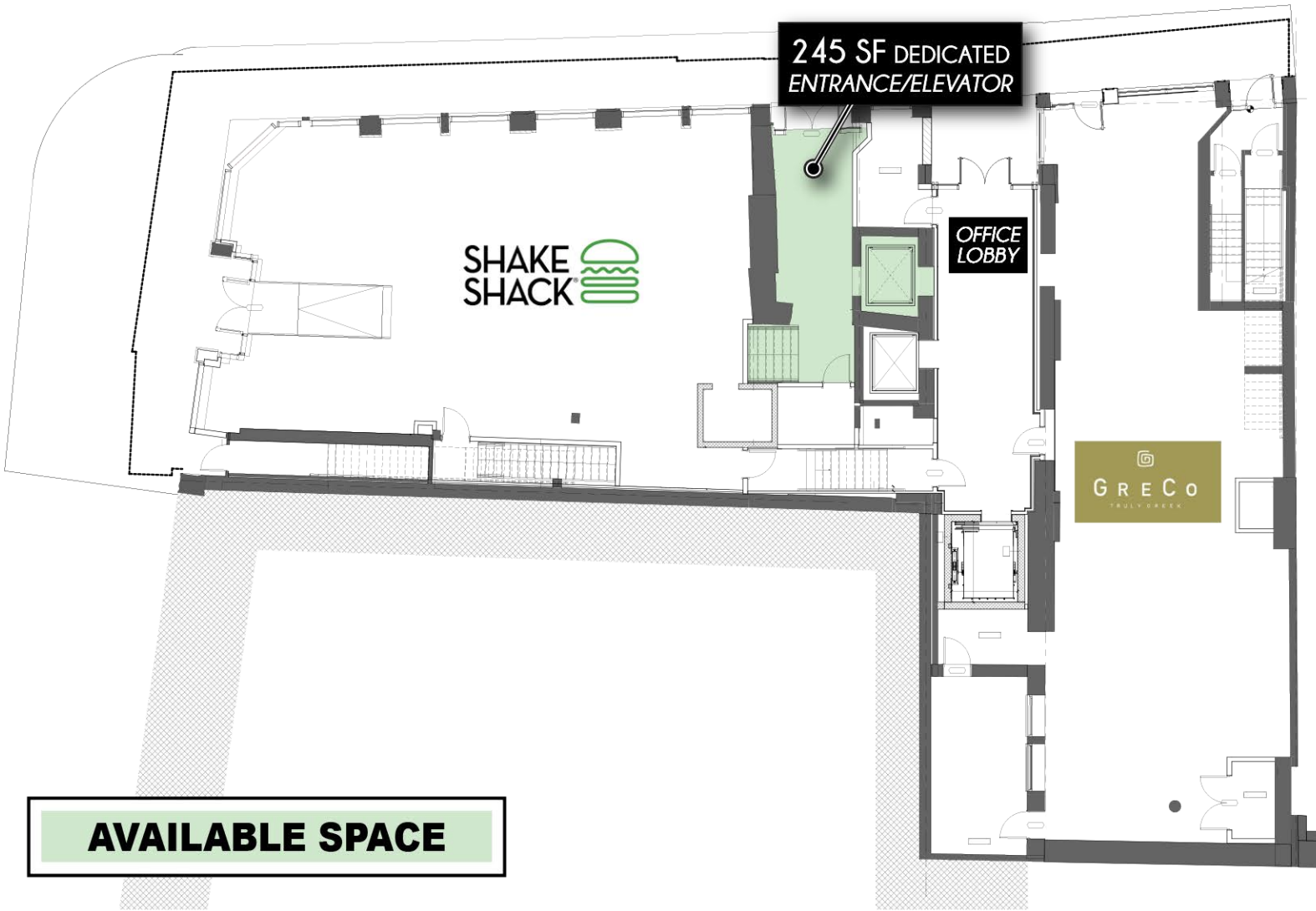
www.dartco.com  
617.262.6620



**STREET LEVEL**

**MILK STREET**

**WASHINGTON STREET**



**3,450 SF SQUARE FEET**  
**DEDICATED ENTRANCE VESTIBULE**

**AVAILABLE**

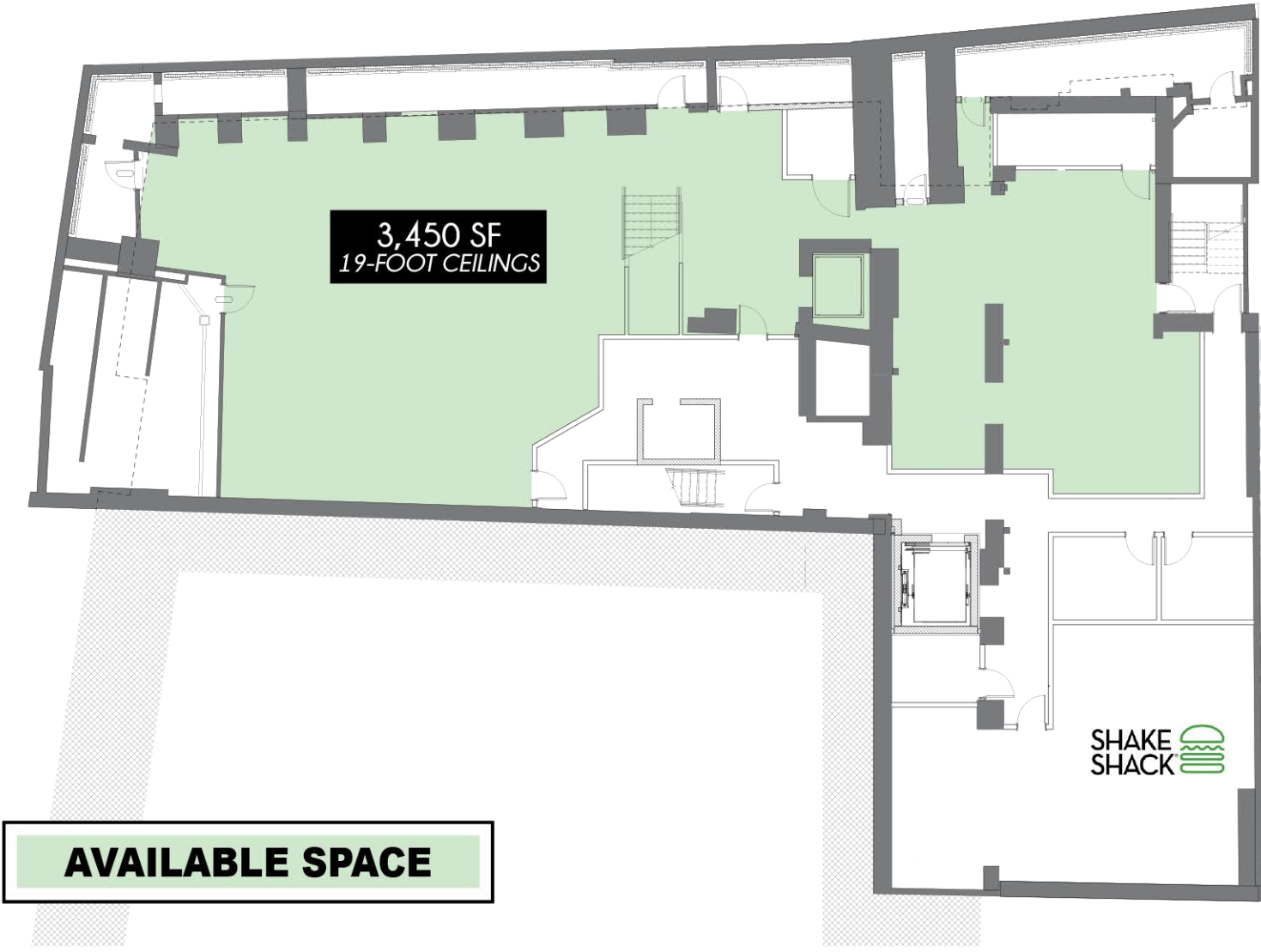
[www.dartco.com](http://www.dartco.com)  
617.262.6620



**LOWER LEVEL**

**MILK STREET**

**WASHINGTON STREET**



**AVAILABLE SPACE**

**3,450 SF SQUARE FEET**  
**DEDICATED ENTRANCE VESTIBULE**

**AVAILABLE**

[www.dartco.com](http://www.dartco.com)  
617.262.6620





# DOWNTOWN BOSTON



GOVERNMENT CENTER  
10,828 DAILY RIDERS

GOVERNMENT CENTER  
CITY HALL

FANEUIL HALL  
18M VISITORS PER YEAR

STATE STREET  
13,258 DAILY RIDERS

MASSACHUSETTS  
STATE HOUSE

OMNI HOTELS  
& RESORTS  
551 ROOMS

DIG INN  
sweetgreen  
clover

NINE ZERO  
A KIMPTON HOTEL  
190 ROOMS

Walgreens  
GNC  
LIVE WELL

DAVIDSTEAK  
LUKE'S  
lou lou  
JOHNSTON  
& MURPHY

Peets Coffee & Tea  
Capital One

DSW  
DESIGNER SHOE WAREHOUSE  
CHASE  
GAP  
FACTORY

SITE  
1 MILK STREET

BOSTON'S  
BUSIEST  
INTERSECTION  
51,000 PEDESTRIANS  
PER DAY

BSC  
boston  
sports clubs  
Marshalls  
TJ-maxx  
HomeGoods

OGAWA  
COFFEE

POST  
OFFICE  
SQUARE

PARK STREET  
19,653 DAILY RIDERS  
HOTEL CHICAGO  
242 ROOMS  
GEORGE  
HOWELL  
COFFEE  
RUKA!

STODDARD'S  
FINE FOOD & ALE  
49  
SOCIAL  
FOOD & DRINK

DOWNTOWN CROSSING  
23,478 DAILY RIDERS  
FOREVER 21  
AT&T

BOSTON  
COMMON

SONOS  
375 EMPLOYEES  
CARBONITE  
350 EMPLOYEES

PAPAGAYO  
mexican kitchen • lounge bar

macy's

MILLENNIUM TOWER  
1.1MSF 442 CONDO UNITS  
TALLEST RESIDENTIAL  
BUILDING IN BOSTON AT 650'  
PABU

BOSTON  
COMMON  
COFFEE CO.  
thinkingup  
3M

Salvatore's  
the paramount

HAYAS MEDIA  
ARNOLD  
WORLDWIDE  
PRIMARK  
Roche Bros.  
OLD NAVY

PRET  
CAFFÈ  
NERO

FOUR SEASONS  
Hotels and Resorts  
273 ROOMS

THE RITZ-CARLTON  
AMC  
THEATRES

sip  
WINE BAR • KITCHEN  
EQUINOX

MILLENNIUM  
PLACE  
256 CONDO UNITS  
COMPLETED IN 2013  
LEGAL CROSSING  
CAFFÈ  
NERO

HYATT  
REGENCY  
502 ROOMS

THE  
DARTMOUTH  
COMPANY

BOYLSTON STREET  
6,826 DAILY RIDERS

CHINATOWN  
6,498 DAILY RIDERS

SOUTH STATION  
112,800 DAILY RIDERS