



120 JEFFREY AVE

HOLLISTON, MA 01746

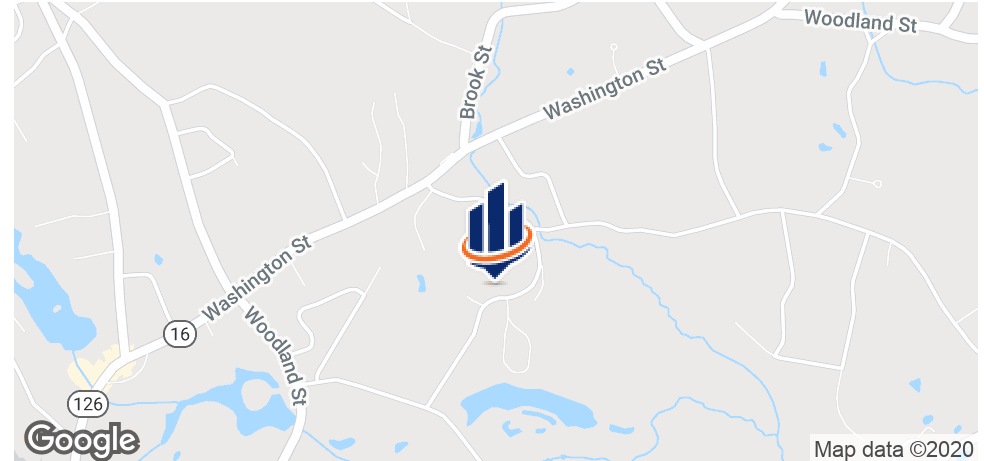
Alex Wood
Advisor
508.820.2700
alex.wood@svn.com

Garrett Quinn
Senior Advisor
508.271.9229
garrett.quinn@svn.com

Victor Galvani
Vice President | Investment Sales
508.271.9225
victor.galvani@svn.com



Property Summary



OFFERING SUMMARY

Available SF:	2,300 - 5,184 SF
Lease Rate:	9.50/MG
Lot Size:	2.42 Acres
Building Size:	15,000 SF
Zoning:	43

PROPERTY OVERVIEW

Located in the Lowland Industrial Park in Holliston, MA this 15,000 SF office building has 2,300- 5,184 SF available on the second floor with the option to subdivide. The space is a perfect opportunity for a tenant with office needs.

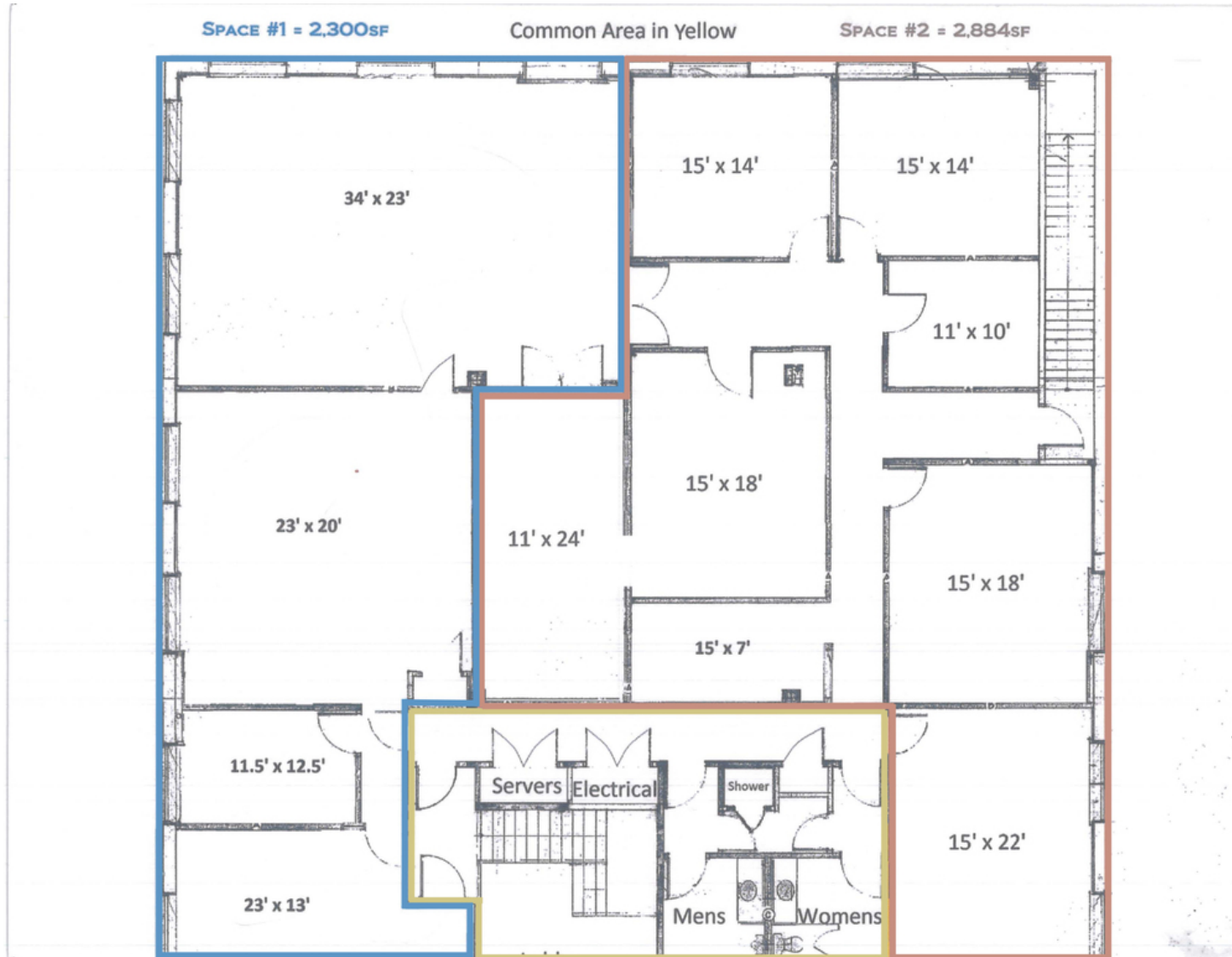
PROPERTY HIGHLIGHTS

- 25 Parking Spaces
- Located in a well established Industrial Park
- Electronic lab space available
- Located near other thriving businesses such as Holliston Pediatrics Group, Cognizant Technology Solutions, Grasshopper Tree & Landscape, Inc., Lista International and more!

Additional Photos



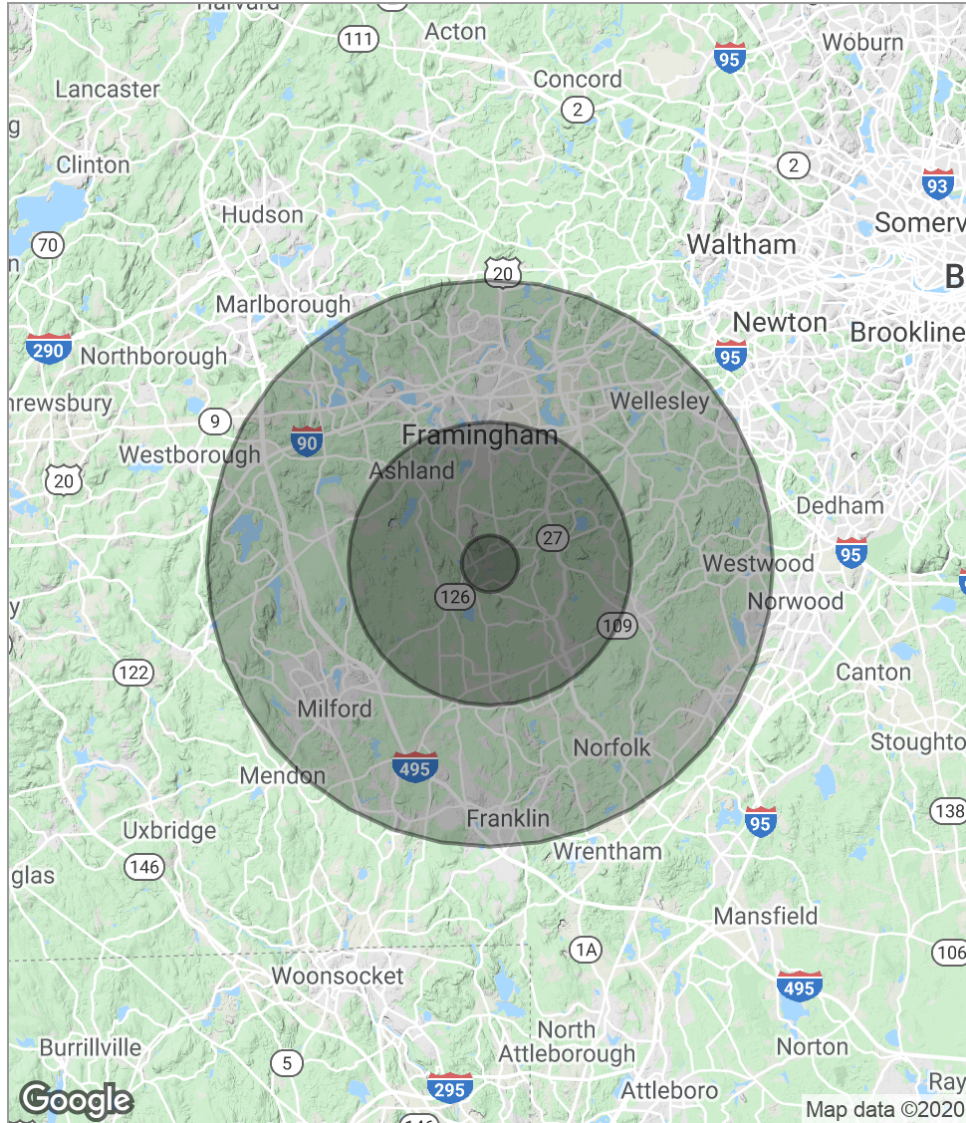
Floor Plans



Location Maps



Demographics Map



POPULATION	1 MILE	5 MILES	10 MILES
Total population	2,049	83,280	362,829
Median age	44.1	39.0	39.1
Median age [Male]	41.7	37.6	38.5
Median age [Female]	46.3	40.2	40.1
HOUSEHOLDS & INCOME	1 MILE	5 MILES	10 MILES
Total households	757	32,055	134,106
# of persons per HH	2.7	2.6	2.7
Average HH income	\$127,196	\$100,183	\$113,005
Average house value	\$446,591	\$404,334	\$463,938

* Demographic data derived from 2010 US Census