

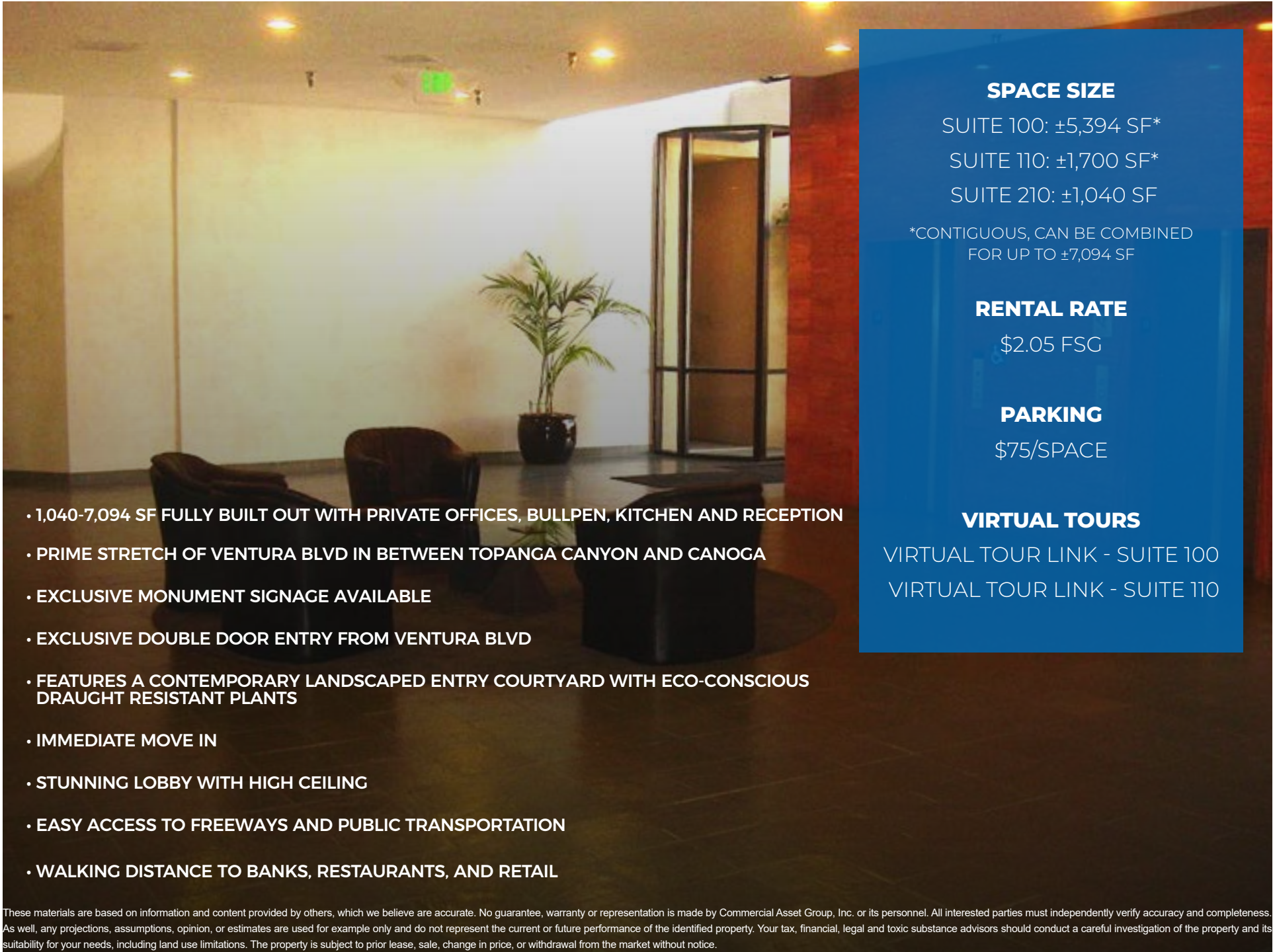
HIGH END OFFICE SPACE FOR LEASE



21731 VENTURA BLVD
WOODLAND HILLS, CA 91364



COMMERCIAL
ASSET GROUP



- 1,040-7,094 SF FULLY BUILT OUT WITH PRIVATE OFFICES, BULLPEN, KITCHEN AND RECEPTION
- PRIME STRETCH OF VENTURA BLVD IN BETWEEN TOPANGA CANYON AND CANOGA
- EXCLUSIVE MONUMENT SIGNAGE AVAILABLE
- EXCLUSIVE DOUBLE DOOR ENTRY FROM VENTURA BLVD
- FEATURES A CONTEMPORARY LANDSCAPED ENTRY COURTYARD WITH ECO-CONSCIOUS DRAUGHT RESISTANT PLANTS
- IMMEDIATE MOVE IN
- STUNNING LOBBY WITH HIGH CEILING
- EASY ACCESS TO FREEWAYS AND PUBLIC TRANSPORTATION
- WALKING DISTANCE TO BANKS, RESTAURANTS, AND RETAIL

SPACE SIZE

SUITE 100: ±5,394 SF*

SUITE 110: ±1,700 SF*

SUITE 210: ±1,040 SF

*CONTIGUOUS, CAN BE COMBINED FOR UP TO ±7,094 SF

RENTAL RATE

\$2.05 FSG

PARKING

\$75/SPACE

VIRTUAL TOURS

[VIRTUAL TOUR LINK - SUITE 100](#)

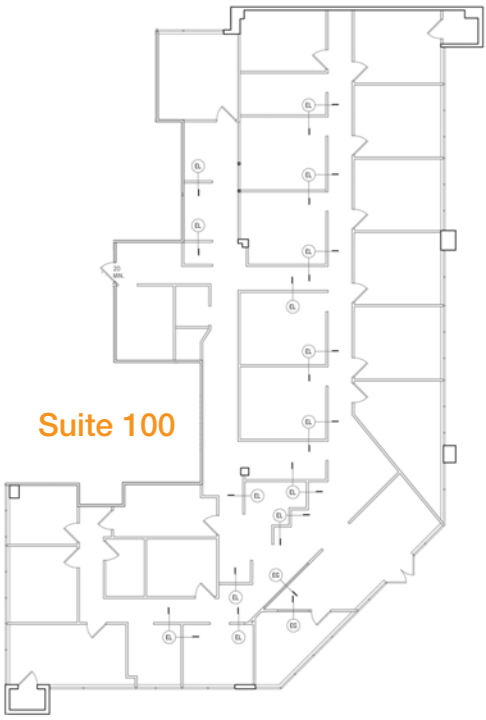
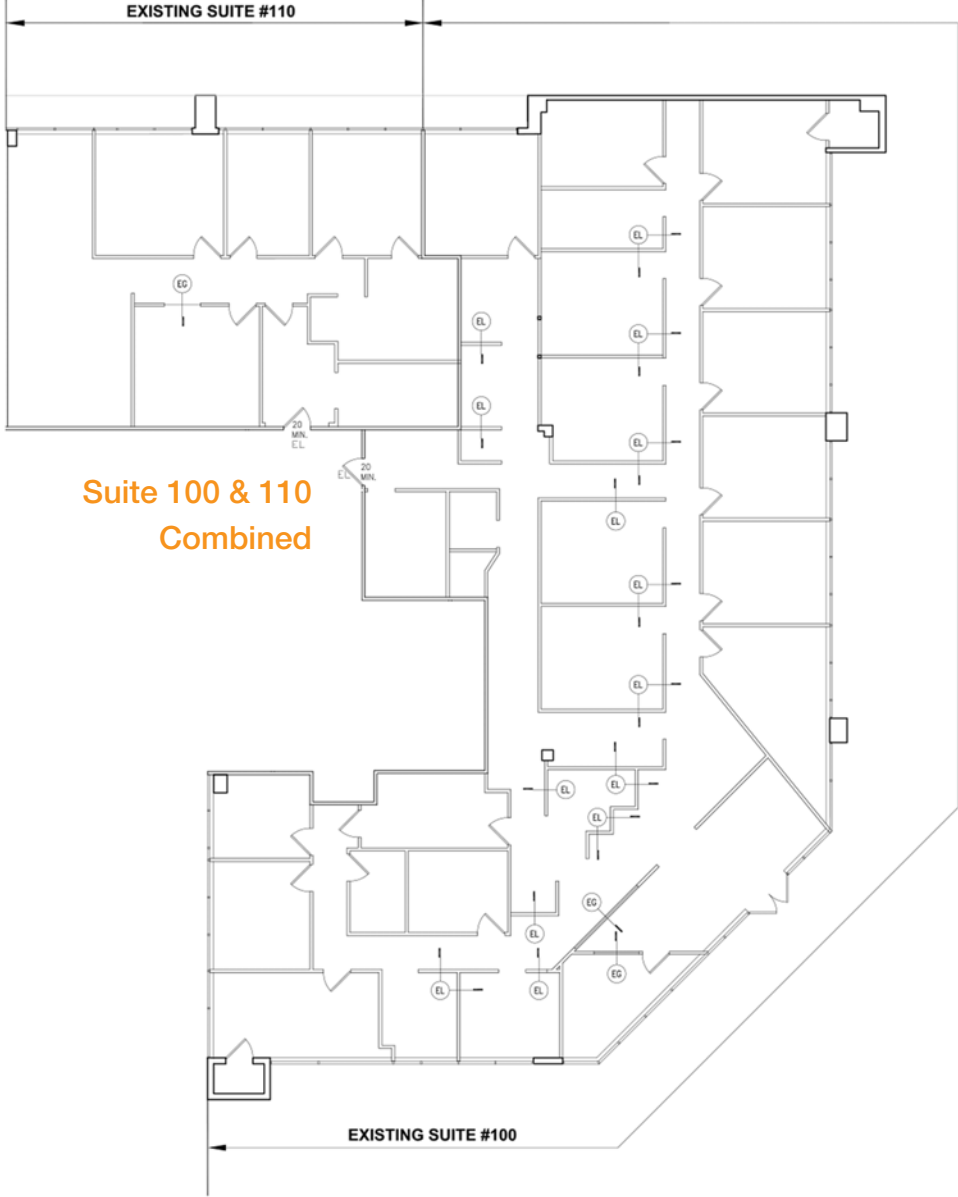
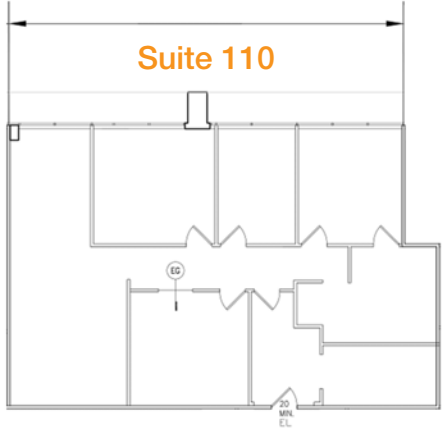
[VIRTUAL TOUR LINK - SUITE 110](#)

These materials are based on information and content provided by others, which we believe are accurate. No guarantee, warranty or representation is made by Commercial Asset Group, Inc. or its personnel. All interested parties must independently verify accuracy and completeness. As well, any projections, assumptions, opinion, or estimates are used for example only and do not represent the current or future performance of the identified property. Your tax, financial, legal and toxic substance advisors should conduct a careful investigation of the property and its suitability for your needs, including land use limitations. The property is subject to prior lease, sale, change in price, or withdrawal from the market without notice.

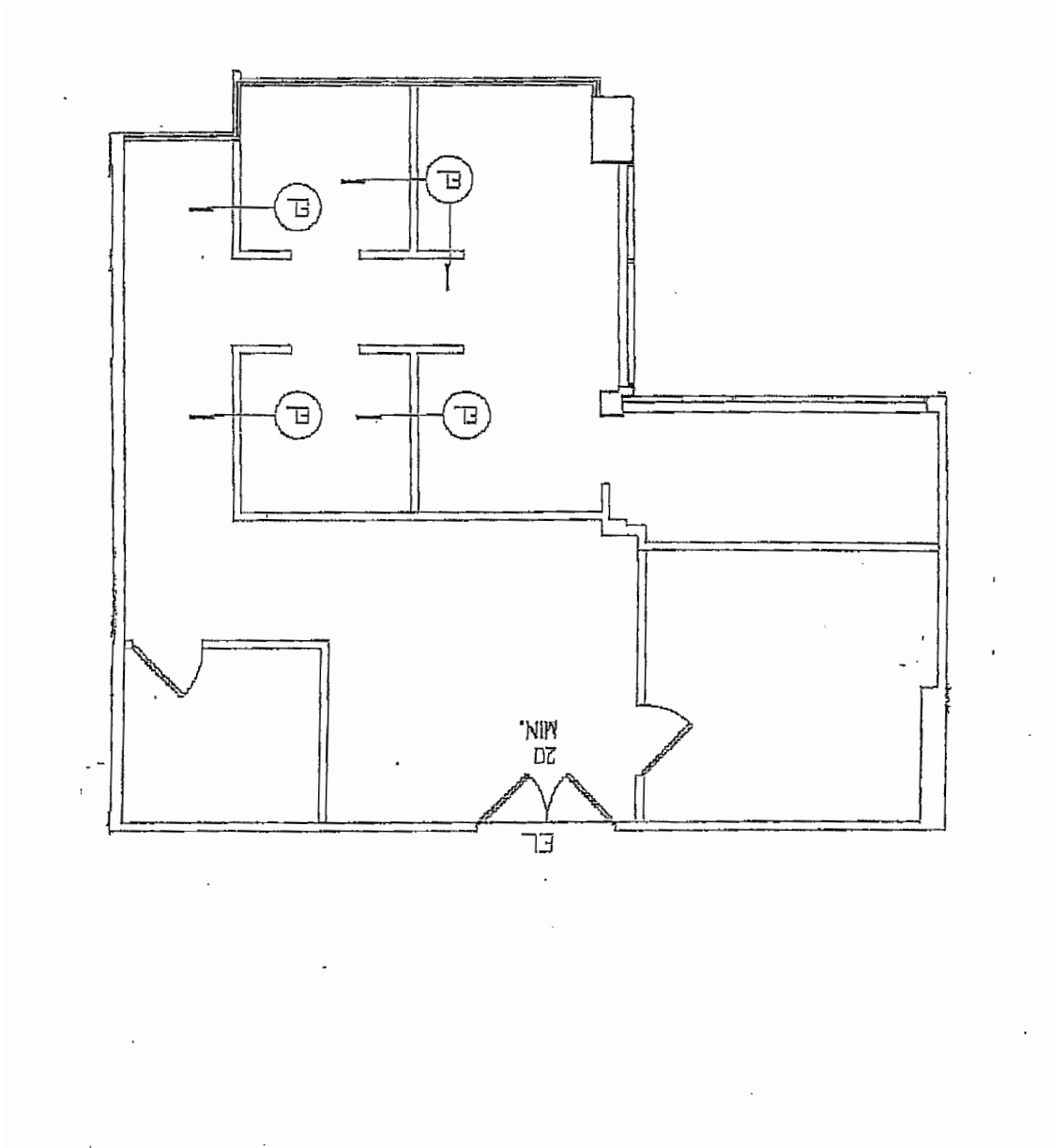
ADDITIONAL PHOTOS



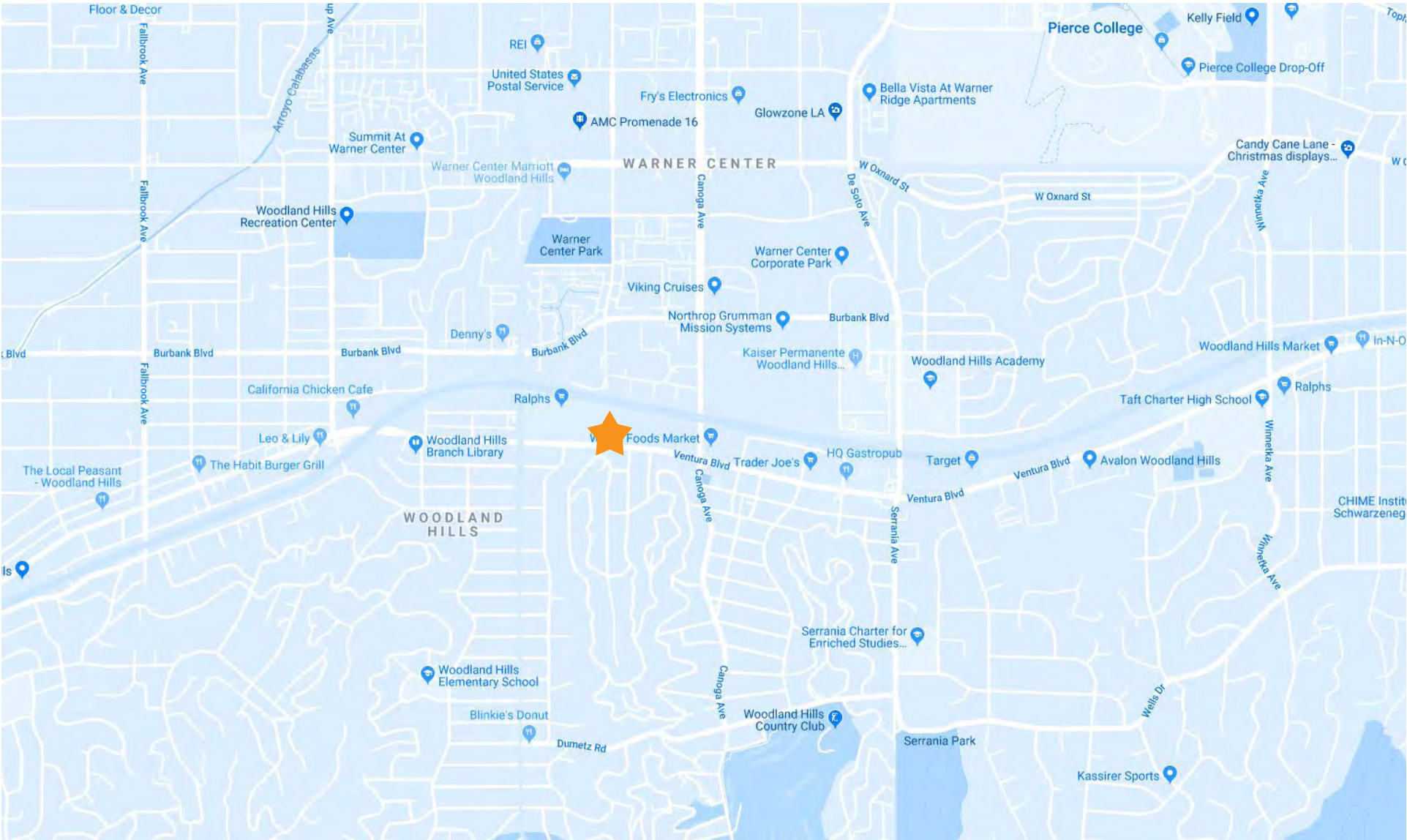
SUITE 100 & 110 FLOOR PLAN



SUITE 210 FLOOR PLAN



MAP





COMMERCIAL
ASSET GROUP



JASON COLE

MANAGING DIRECTOR
P 310.272.7383
E JASONC@CAG-RE.COM
LIC. 01727670

COMMERCIAL ASSET GROUP

1801 CENTURY PARK EAST, STE 1550
LOS ANGELES, CA 90067
P 310.275.8222 F 818.385.1470
WWW.CAG-RE.COM LIC. 01876070