

Build-to-Suit

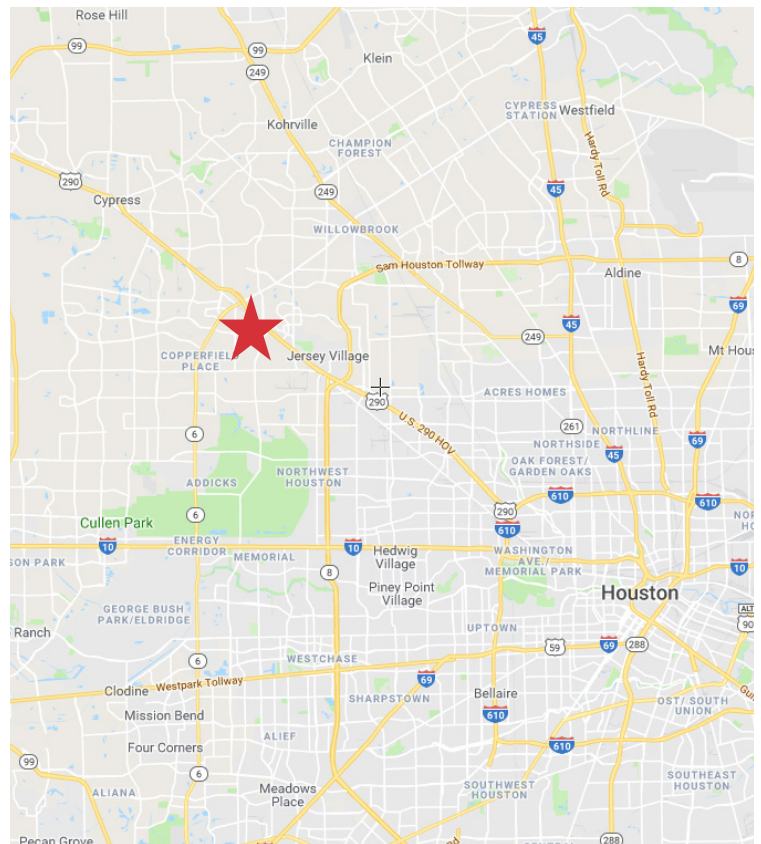
Satsuma Station Industrial Park
±4.88 Acres of Land

Build-to-Suit Site



Property Highlights

- ±4.88 Acre Site
- Building sizes from 25,000 - 84,500 SF
- Tiltwall construction
- Outside storage area
- Located at the northeast corner of Jackrabbit and Wagg Way just south of Highway 290 with good access to Highway 6 and Eldridge Parkway
- Located in the 115 acre Deed Restricted Satsuma Station Industrial Park
- Great Site for Distribution of Manufacturing Facility



Travis Land, SIOR
tel 713 985 4624
travis.land@naipartners.com

NAI Partners
tel 713 629 0500
fax 713 629 0504
www.naipartners.com

UNITED EQUITIES
REAL ESTATE
DEVELOPMENT LEASING MANAGEMENT

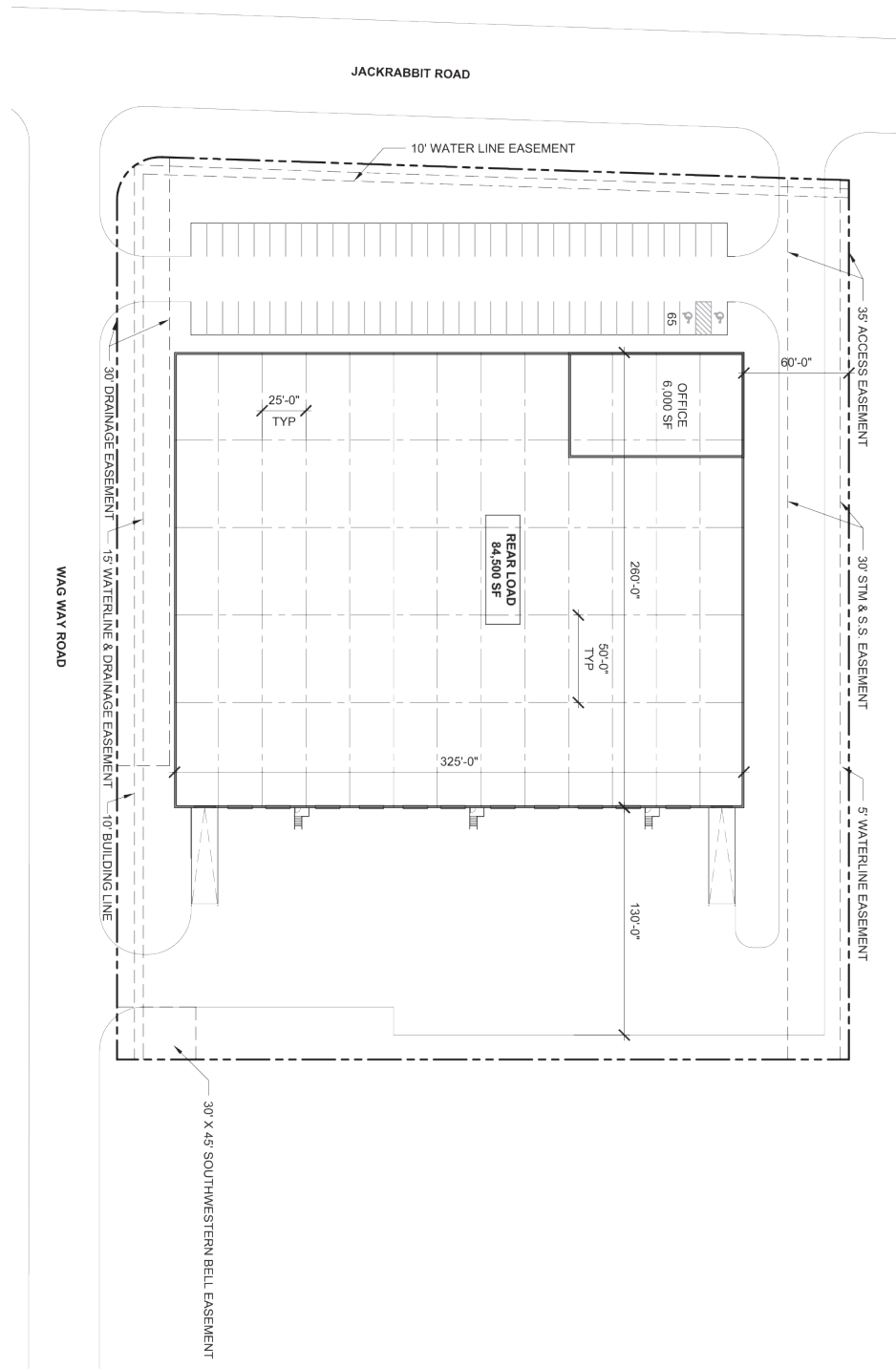
NAIPartners
HOUSTON | AUSTIN | SAN ANTONIO

Build-to-Suit

Satsuma Station Industrial Park
±4.88 Acres of Land

Build-to-Suit Site

Site Layout - Option 1



Travis Land, SIOR
tel 713 985 4624
travis.land@naipartners.com

NAI Partners
tel 713 629 0500
fax 713 629 0504
www.naipartners.com

UNITED EQUITIES
REAL ESTATE
DEVELOPMENT LEASING MANAGEMENT

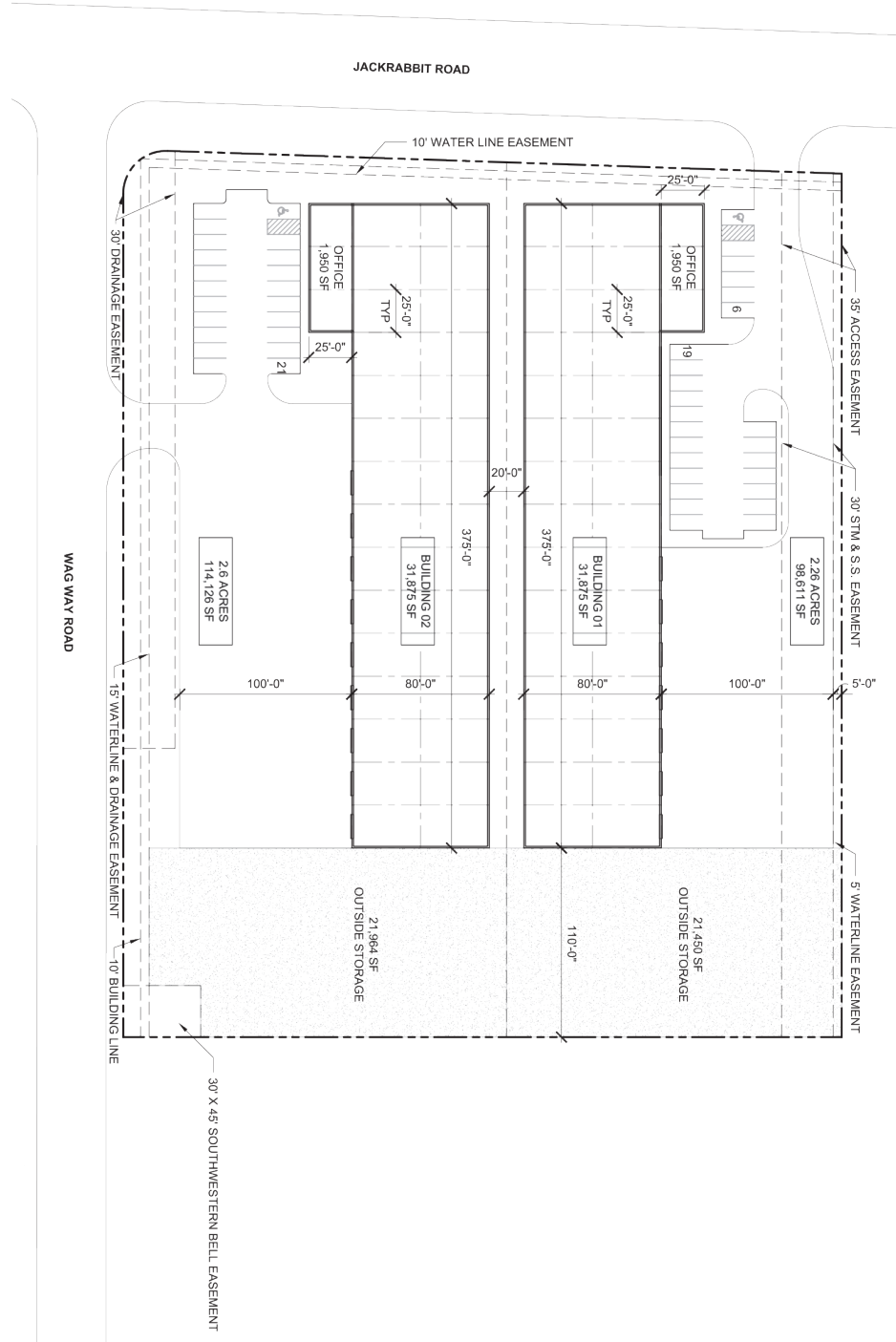
NAIPartners
HOUSTON | AUSTIN | SAN ANTONIO

Build-to-Suit

Satsuma Station Industrial Park
±4.88 Acres of Land

Build-to-Suit Site

Site Layout - Option 2



Travis Land, SIOR
tel 713 985 4624
travis.land@naipartners.com

NAI Partners
tel 713 629 0500
fax 713 629 0504
www.naipartners.com

UNITED EQUITIES
REAL ESTATE
DEVELOPMENT LEASING MANAGEMENT

NAIPartners
HOUSTON | AUSTIN | SAN ANTONIO