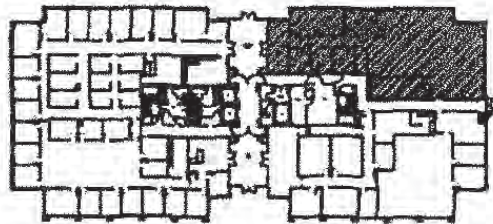


**KEY PLAN**

1/84" = 1'-0"



**LEGEND**

- EXISTING PARTITION
- NEW PARTITION
- DEMOLISHED ITEMS
- DEMISING PARTITION
- SIDELIGHT/WINDOW
- ONE HOUR PARTITION
- TWO HOUR PARTITION

**OCCUPANT OAD**

36 OCC=3,580 S.F. BUSINESS / 100

**EGRESS**

- YES SPRINKLERED
- 100' COMMON PATH OF EGRESS TRAVEL
- 30' ACTUAL COMMON PATH OF EGRESS TRAVEL
- 2 EXITS REQUIRED
- 2 EXITS PROVIDED

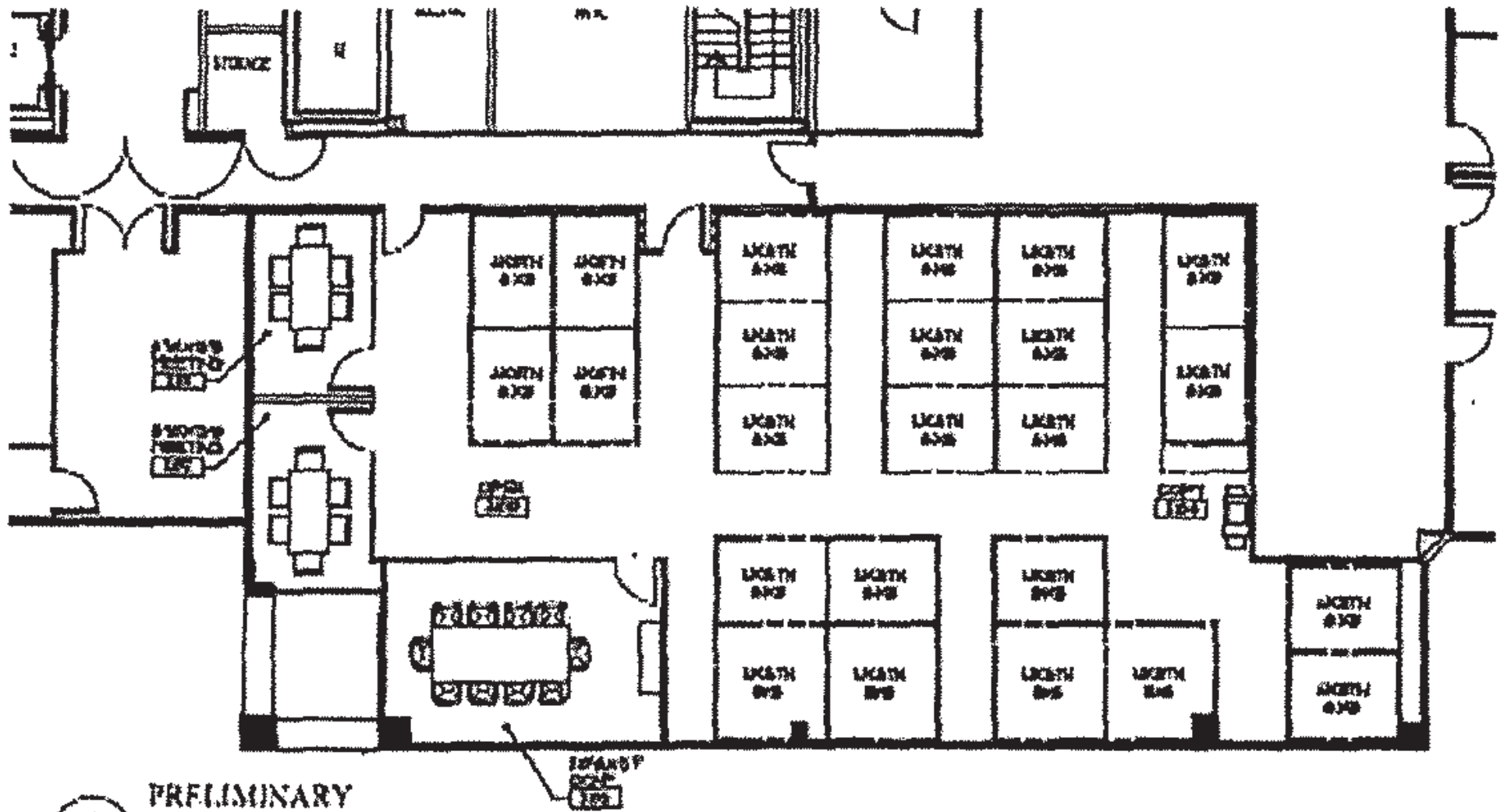
**2180 Satellite Blvd.  
Suite 160 (4,210 RSF)**

THIS PLAN IS SUBJECT TO APPROVAL BY THE MUNICIPAL CODE AUTHORITIES.

THESE DOCUMENTS ARE INCOMPLETE AND MAY NOT BE USED FOR REGULATORY APPROVAL, PERMIT OR CONSTRUCTION.



ROOM SIZES ARE APPROXIMATE ONLY AND ARE NOT TO BE USED FOR FINAL DETERMINATION OF FURNITURE SIZES OR PLACEMENT.



1  
P-1  
PRELIMINARY FLOOR PLAN  
© 2015 [illegible]

2180 Satellite Blvd.  
Suite 220 (3,434 RSF)

