

MEDICAL OFFICE
FOR LEASE

960

W SAN MARCOS
SAN MARCOS, CA 92078
PROFESSIONAL CENTER



CONTACT

MARK AVILLA

+1 760 801 3823
mark.avilla@cushwake.com
LIC #01104562

JOE ZUREK

+1 619 866 2027
joe.zurek@cushwake.com
LIC #01967813

NEHAL WADHWA

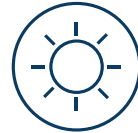
+1 1 858-625-5228
nehal.wadhwa@cushwake.com
LIC # 01859922



PROPERTY HIGHLIGHTS



Office/Medical Building



Atrium-style building



Excellent access to Highway 78 via San Marcos Blvd.



Abundant parking



Walking distance to numerous food service, retail, and lodging facilities



Five minutes to Palomar College station



Asking lease rate:

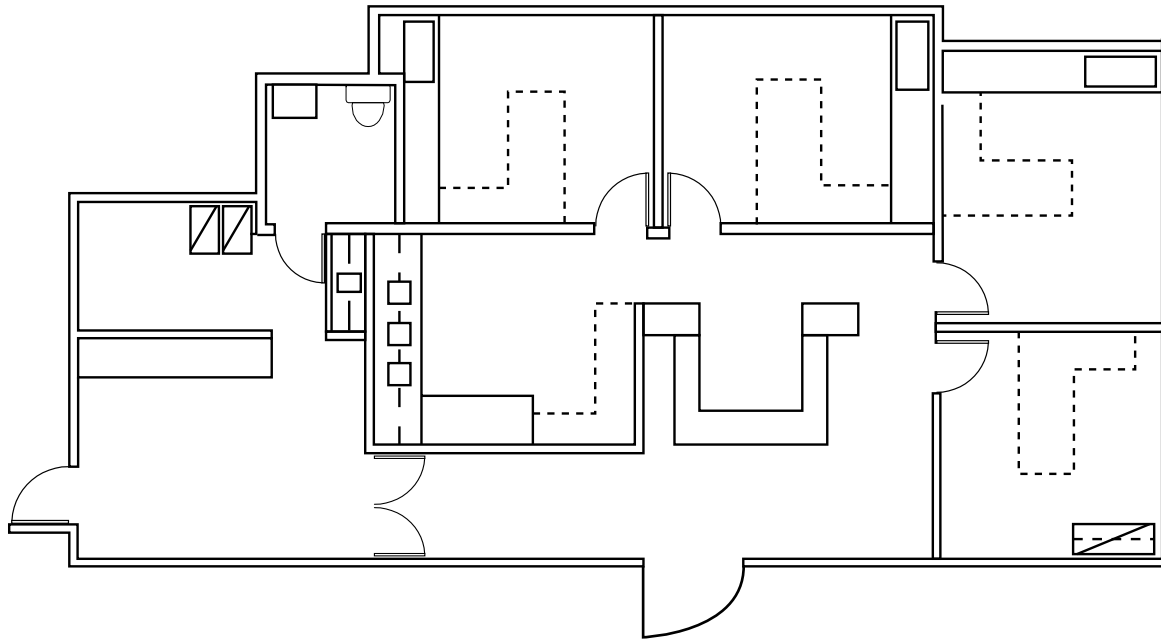
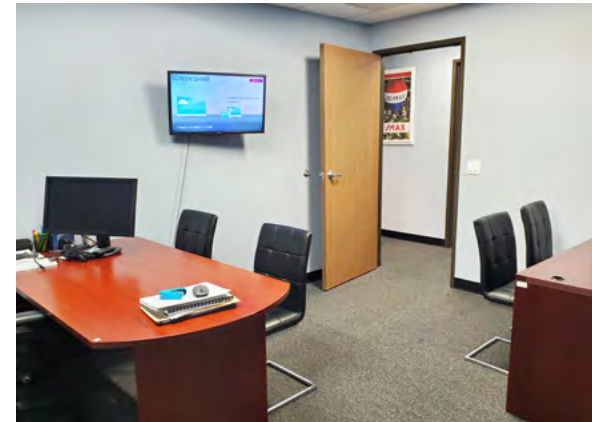
Office: \$2.00/RSF + E&J

Medical: \$2.50/RSF + E&J

960

PROFESSIONAL CENTER
W SAN MARCOS BLVD
SAN MARCOS, CA 92078

SUITE 100 | 2,100 SF
AVAILABLE NOW

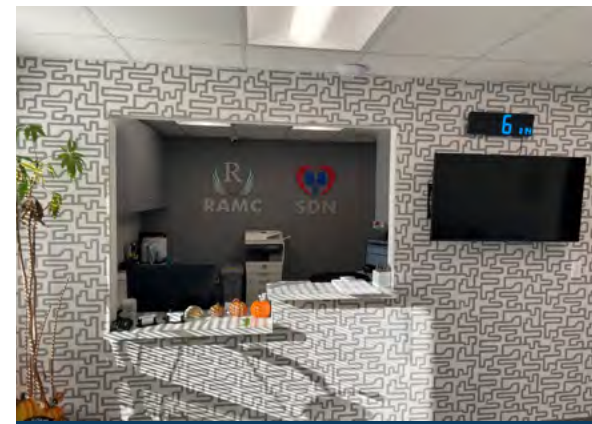


960

PROFESSIONAL CENTER
W SAN MARCOS BLVD
SAN MARCOS, CA 92078

SUITE 210 | 2,070 SF

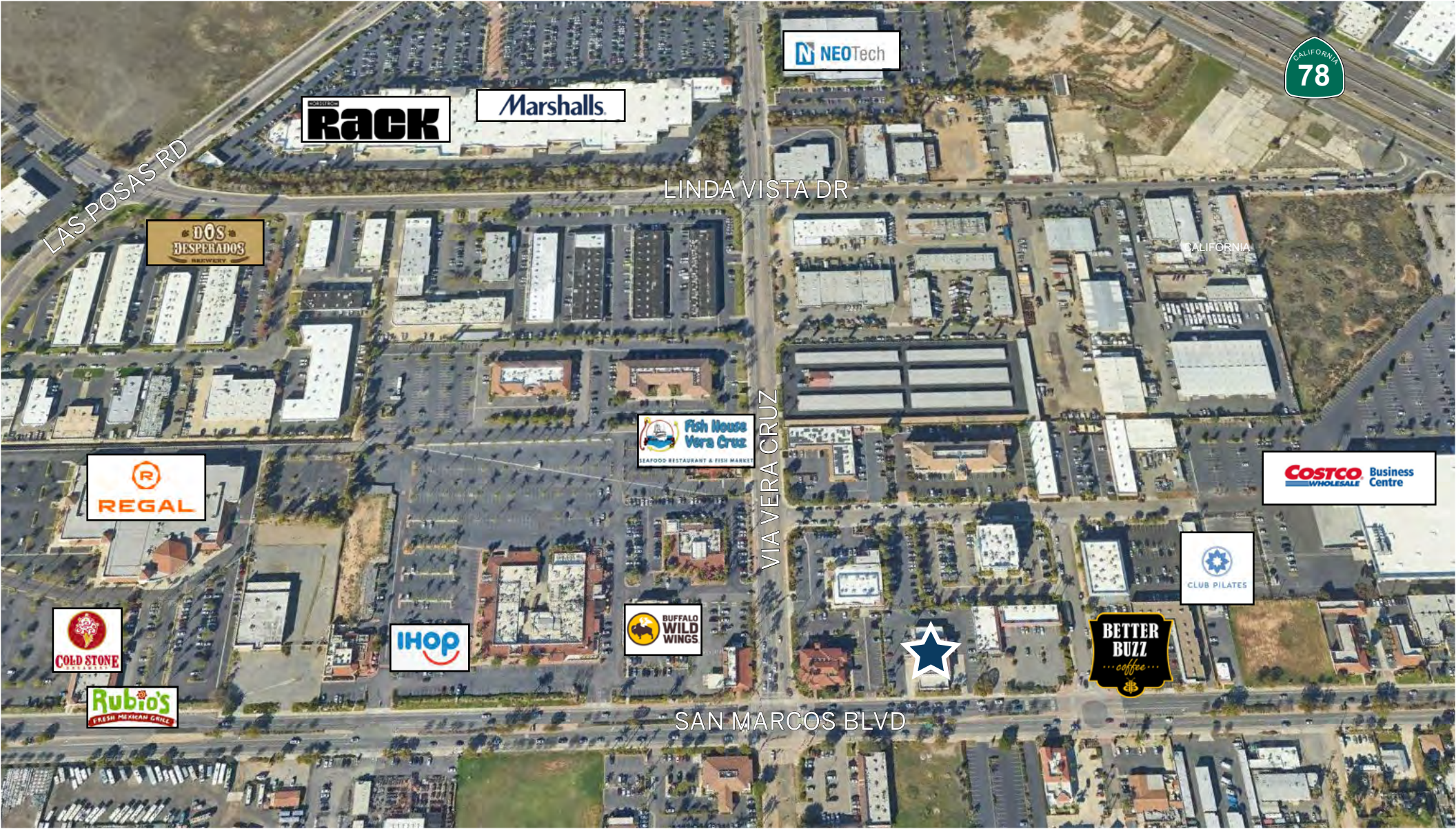
MEDICAL OFFICE | AVAILABLE 60 DAYS



960

PROFESSIONAL CENTER
W SAN MARCOS BLVD
SAN MARCOS, CA 92078

LOCATION



FOR LEASE

960

W SAN MARCOS
SAN MARCOS, CA 92078

PROFESSIONAL CENTER

CONTACT

MARK AVILLA

+1 760 801 3823

mark.avilla@cushwake.com

LIC #01104562

M&M ESCROW CO.

JOE ZUREK

+1 619 866 2027

joe.zurek@cushwake.com

LIC #01967813

NEHAL WADHWA

+1 858-625-5228

nehal.wadhwa@cushwake.com

LIC # 01859922

12830 El Camino Real, Suite 100
San Diego, CA 92130 | USA

P +1 760 431 4200

F +1 760 454 3869

cushmanwakefield.com

