
1900SF MEDICAL OFFICE

2054 Pro Pointe Lane, Harrisonburg, VA 22801

5 OFFICES/PATIENT ROOMS | LAB | RECEPTION AREA



OFFERING SUMMARY

Available SF:	1,900 SF
Lease Rate:	\$15.00 SF/yr (NNN)
Unit Size:	1900sf
Parking	105 Stalls
Signage	Freestanding/Wall
Zoning	B2

PROPERTY OVERVIEW

Medical office unit with 5 office/patient rooms, reception area, lab, waiting area, and two restrooms in place. Conveniently located just off of Reservoir Street and Evelyn Byrd Avenue in the heart of Harrisonburg's primary office district with shared parking in excess of 100 spaces. Surrounded by medical and professional office users with freestanding signage availability.

PROPERTY HIGHLIGHTS

- Medical office space with lab space and infrastructure in place
- 105 shared parking stalls available
- Located in the primary office district with easy accessibility

For More Information:

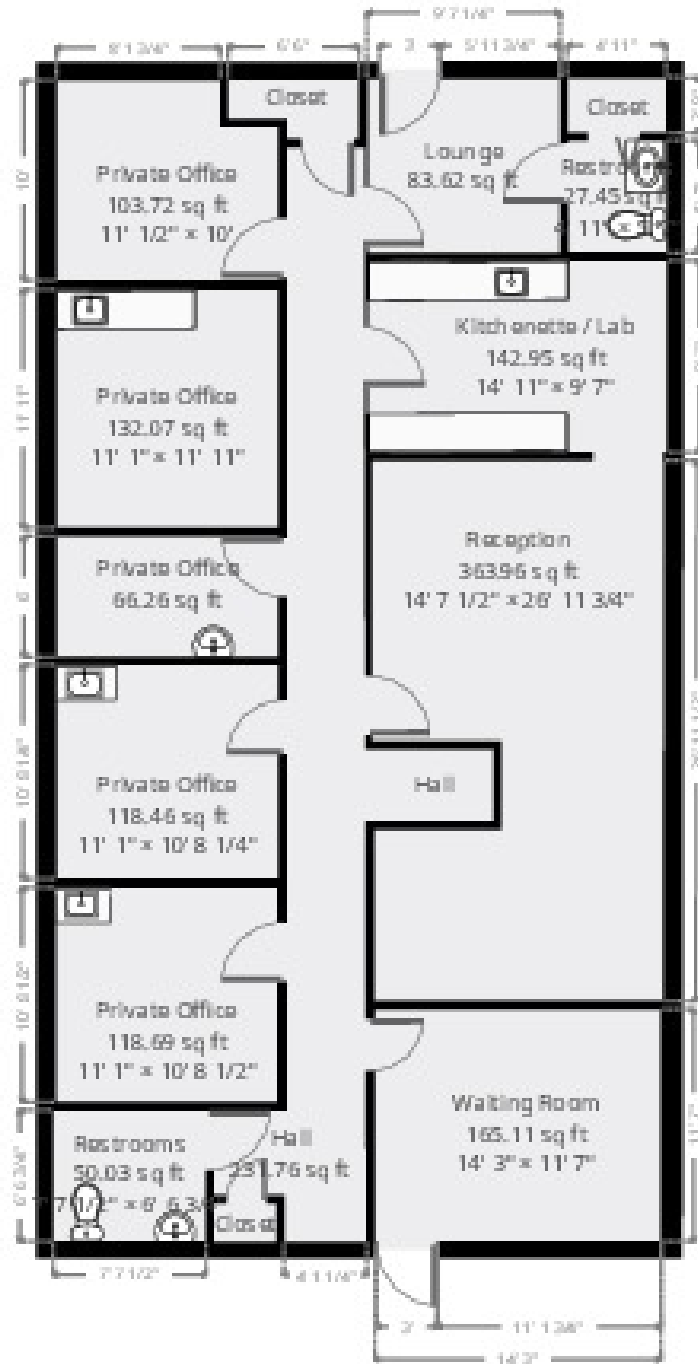
Tim Reamer
540.271.7525
tim.reamer@cottonwood.com

COTTONWOOD
COMMERCIAL
A COMMERCIAL REAL ESTATE BROKERAGE

1900SF MEDICAL OFFICE

2054 Pro Pointe Lane, Harrisonburg, VA 22801

FLOOR PLAN



For More Information:

Tim Reamer

540.271.7525

tim.reamer@cottonwood.com

COTTONWOOD
COMMERCIAL
A COMMERCIAL REAL ESTATE BROKERAGE

1900SF MEDICAL OFFICE

2054 Pro Pointe Lane, Harrisonburg, VA 22801

ADDITIONAL PHOTOS



For More Information:

Tim Reamer

540.271.7525

tim.reamer@cottonwood.com

COTTONWOOD
COMMERCIAL
A COMMERCIAL REAL ESTATE BROKERAGE

1900SF MEDICAL OFFICE

2054 Pro Pointe Lane, Harrisonburg, VA 22801

Location Maps



For More Information:

Tim Reamer

540.271.7525

tim.reamer@cottonwood.com

COTTONWOOD
COMMERCIAL
A COMMERCIAL REAL ESTATE BROKERAGE