

Lutherville Station

130 West Ridgely Road, Lutherville-Timonium, MD 21093



Junior Anchor Retail For Lease

Property Highlights:

- Prime shopping center located in one of the premier retail trade areas in the Baltimore Metro.
- Surrounded by a dense, affluent residential base.
- 100,000 SF of daytime office on site.

Available Space:

Former **Golfsmith** Available: 21,339 SF - \$16.00/SF NNN

Demographic Snapshot // 2017:

	1 Mile	3 Mile	5 Mile
Population	9,725	80,734	182,578
Daytime Population	11,301	74,203	134,786
Median HH Income	\$91,026	\$73,837	\$75,526

Traffic Counts // 2016:

York Rd (MD-45)	34,550 AADT
E Ridgely Rd	8,434 AADT

Join:

KOHL'S OLD NAVY

Michaels

BIG LOTS!

BEST BUY OUTLET
OPEN FRIDAYS, SATURDAYS, AND SUNDAYS

For Retail Leasing Info
Please Contact: Ryan Wilner
rwilner@klnb.com
443-632-2058

Matt Copeland
mcpeland@klnb.com
443-632-2051

For Office Leasing Info
Please Contact: Brad Berzins
bberzins@klnb.com
443-632-2048

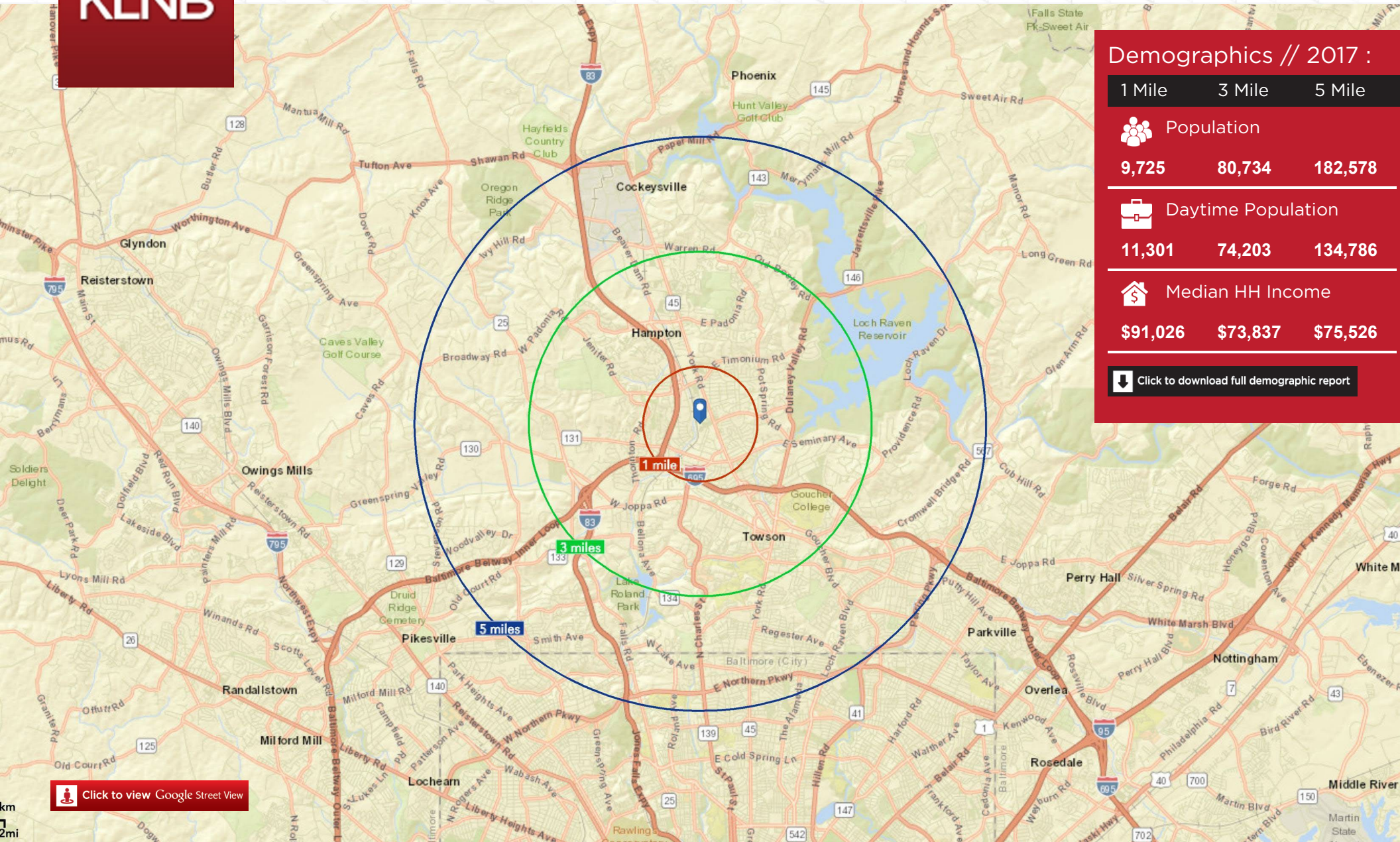
Jesse Schwartzman
jschwartzman@klnb.com
443-632-2067

KLNBretail
Commercial Real Estate Services



Lutherville Station

130 West Ridgely Road, Lutherville-Timonium, MD 21093



Location & Demographics

For Retail Leasing Info Please Contact: Ryan Wilner rwilner@klnb.com 443-632-2058

Matt Copeland mcopeland@klnb.com 443-632-2051

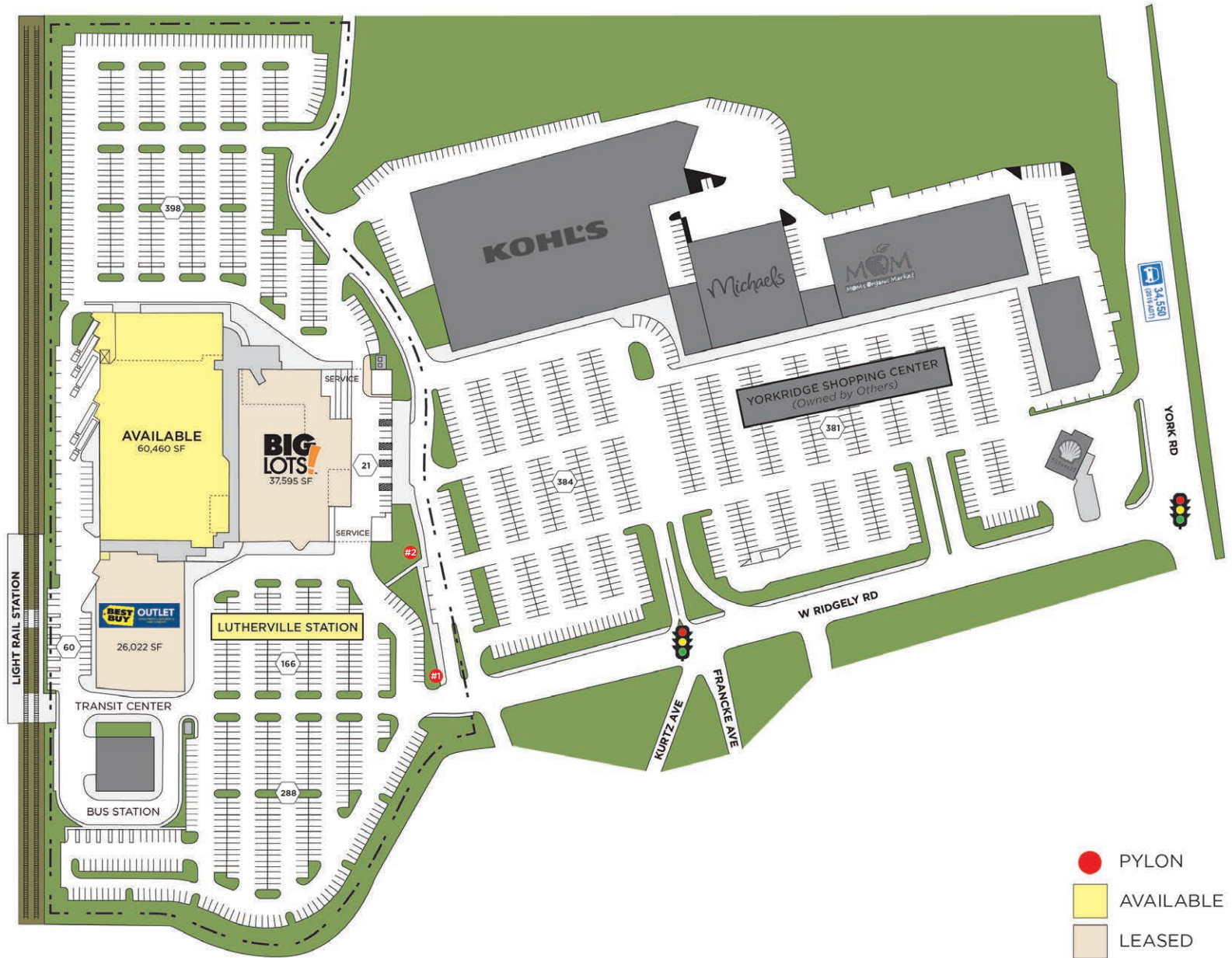
For Office Leasing Info Please Contact: Brad Berzins bberzins@klnb.com 443-632-2048

Jesse Schwartzman jschwartzman@klnb.com 443-632-2067

KLN Bretail
Commercial Real Estate Services

Lutherville Station

130 West Ridgely Road, Lutherville-Timonium, MD 21093



Ground Level Plan

For Retail Leasing Info
Please Contact: Ryan Wilner
rwilner@klnb.com
443-632-2058

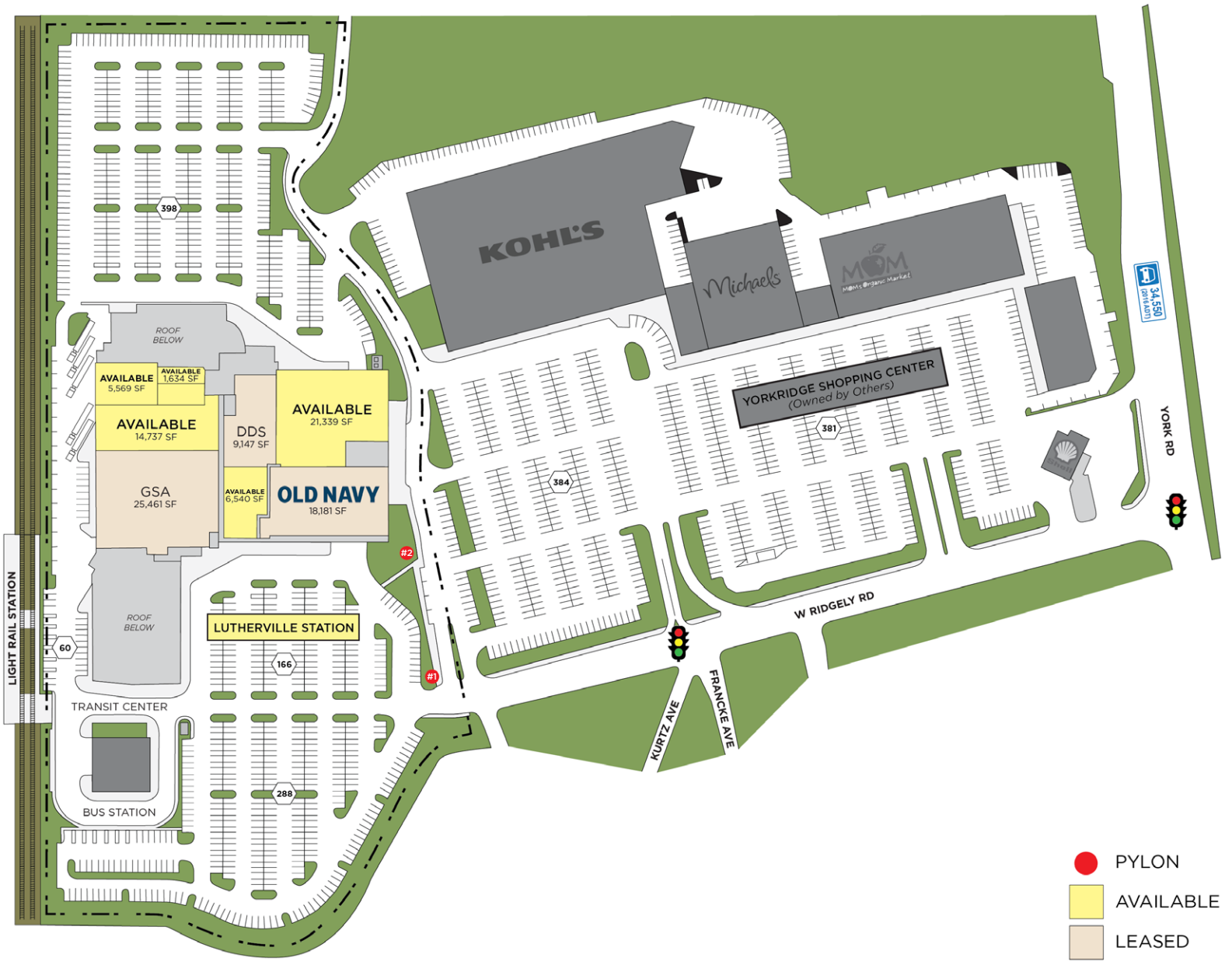
For Office Leasing Info
Please Contact: Matt Copeland
mcpeland@klnb.com
443-632-2051

For Office Leasing Info
Please Contact: Brad Berzins
bberzins@klnb.com
443-632-2048

For Office Leasing Info
Please Contact: Jesse Schwartzman
jschwartzman@klnb.com
443-632-2067

Lutherville Station

130 West Ridgely Road, Lutherville-Timonium, MD 21093



At-Grade Plan

For Retail Leasing Info Please Contact: Ryan Wilner
 rwilner@klnb.com
 443-632-2058

For Office Leasing Info Please Contact: Matt Copeland
 mcopeland@klnb.com
 443-632-2051

For Office Leasing Info Please Contact: Brad Berzins
 bberzins@klnb.com
 443-632-2048

For Office Leasing Info Please Contact: Jesse Schwartzman
 jschwartzman@klnb.com
 443-632-2067

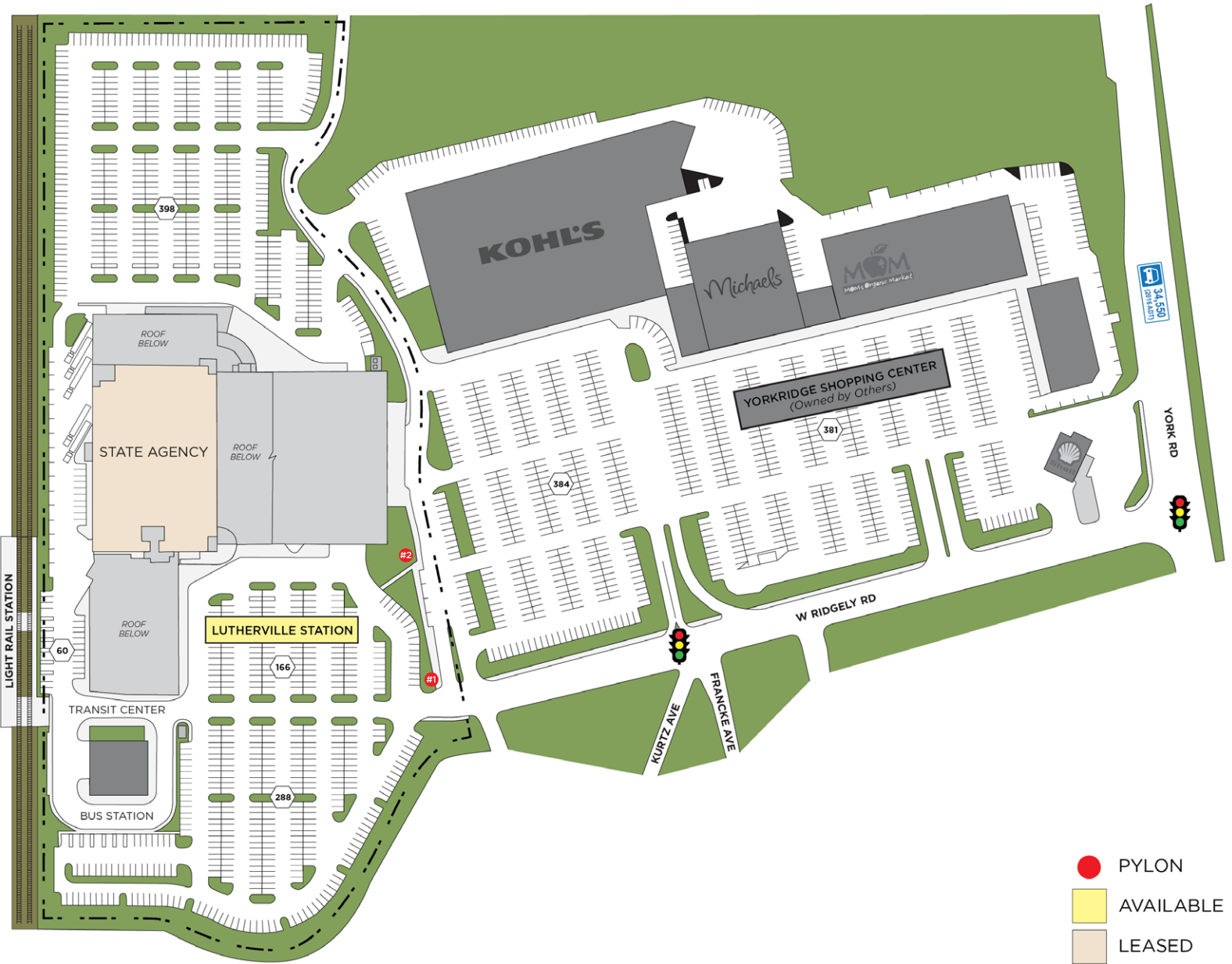
Lutherville Station

130 West Ridgely Road, Lutherville-Timonium, MD 21093

PYLON #2



PYLON #1



Second Level Plan

For Retail Leasing Info
Please Contact: Ryan Wilner
rwilner@klnb.com
443-632-2058

For Office Leasing Info
Please Contact: Matt Copeland
mcpeland@klnb.com
443-632-2051

For Office Leasing Info
Please Contact: Brad Berzins
bberzins@klnb.com
443-632-2048

For Office Leasing Info
Please Contact: Jesse Schwartzman
jschwartzman@klnb.com
443-632-2067

Lutherville Station

130 West Ridgely Road, Lutherville-Timonium, MD 21093



Market Aerial

For Retail Leasing Info Please Contact: Ryan Wilner rwilner@klnb.com 443-632-2058
 Matt Copeland mcopeland@klnb.com 443-632-2051

For Office Leasing Info Please Contact: Brad Berzins bberzins@klnb.com 443-632-2048
 Jesse Schwartzman jschwartzman@klnb.com 443-632-2067

KLNB

Lutherville Station

130 West Ridgely Road, Lutherville-Timonium, MD 21093

AVAILABLE - 21,339 SF



AVAILABLE - 60,460 SF



Available Spaces

For Retail
Leasing Info
Please Contact:

Ryan Wilner
rwilner@klnb.com
443-632-2058

Matt Copeland
mcpeland@klnb.com
443-632-2051

For Office
Leasing Info
Please Contact:

Brad Berzins
bberzins@klnb.com
443-632-2048

Jesse Schwartzman
jschwartzman@klnb.com
443-632-2067

KLNBretail
Commercial Real Estate Services

KLNB

Lutherville Station

130 West Ridgely Road, Lutherville-Timonium, MD 21093



Click here to visit
property website

For More Information, Please Contact:

Ryan Wilner

rwilner@klnb.com

443-632-2058



Matt Copeland

[mcpeland@klnb.com](mailto:mcopeland@klnb.com)

443-632-2051



Brad Berzins

bberzins@klnb.com

443-632-2048



Jesse Schwartzman

jschwartzman@klnb.com

443-632-2067



100 West Road, Suite 505 Towson, MD 21204

Phone: 410.321.0100

[www.](http://www.klnbretail.com)

[klnbretail.com](http://www.klnbretail.com)



facebook.com/KLNBLLC



[@KLNBLLC](https://twitter.com/KLNBLLC)



linkedin.com/company/klnb

While we have no reason to doubt the accuracy of any of the information supplied, we cannot, and do not guarantee its accuracy. All information should be independently verified prior to a purchase or lease of the property. We are not responsible for errors, omissions, misuse, or misinterpretation of information contained herein and make no warranty of any kind, express or implied, with respect to the property or any other matters.