



151
HOPE STREET
MOUNTAIN VIEW | CA



Located in Downtown Mountain View
For Lease ±60,000 SF Class A+ Office Building





highlights



Ready for occupancy Q1 2022



±60,000 square foot four story building



New A+ construction



Steps away from Caltrain, Light Rail, and Mountain View Transit Center



Adjacent to a brand new 150 Hope Street Boutique Lifestyle Hotel property – also opening Q1 2022



Located in the heart of Downtown Mountain View within walking distance to countless downtown amenities



Easy access to highways 101, 85, 237, 280, and Central Expressway



3 levels of underground parking

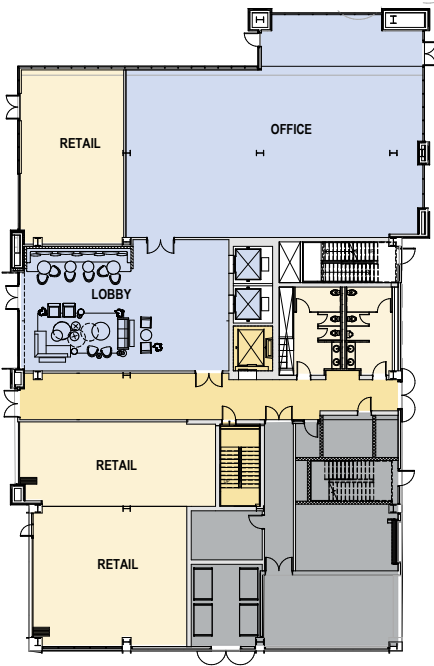


CONNECTIVITY

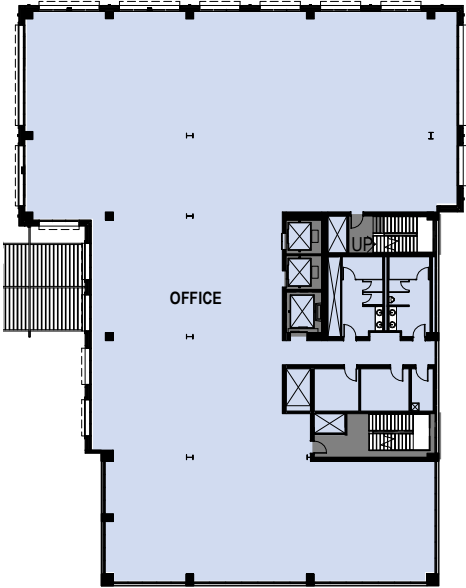
- Walk to Caltrain
- 30 Minutes to San Francisco
- 10 Minutes to San Jose

floor plans

Level 01: ±6,386 SF



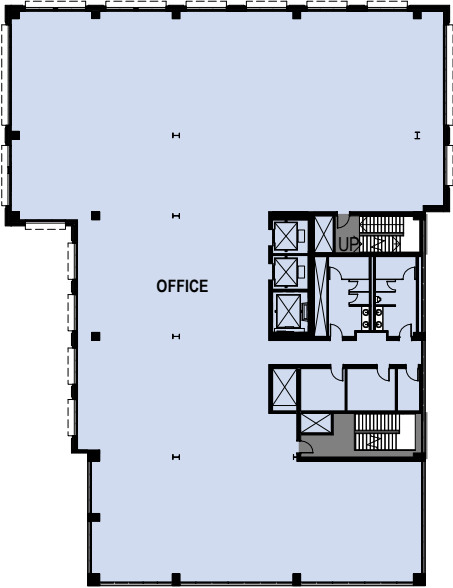
Level 02: ±18,262 SF



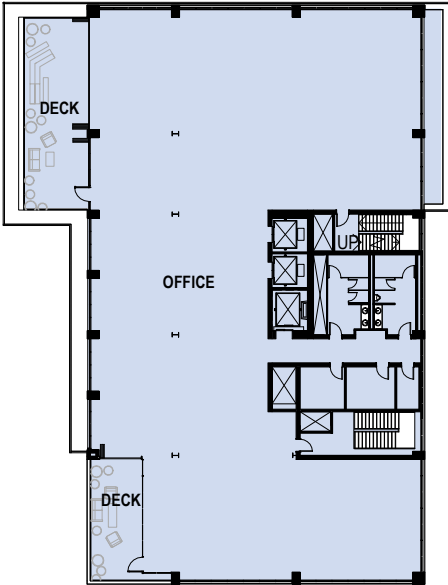
151
HOPE STREET
MOUNTAIN VIEW | CA

floor plans (cont'd)

Level 03: ±18,262 SF



Level 04: ±17,090 SF





HOPE ST OFFICE

151

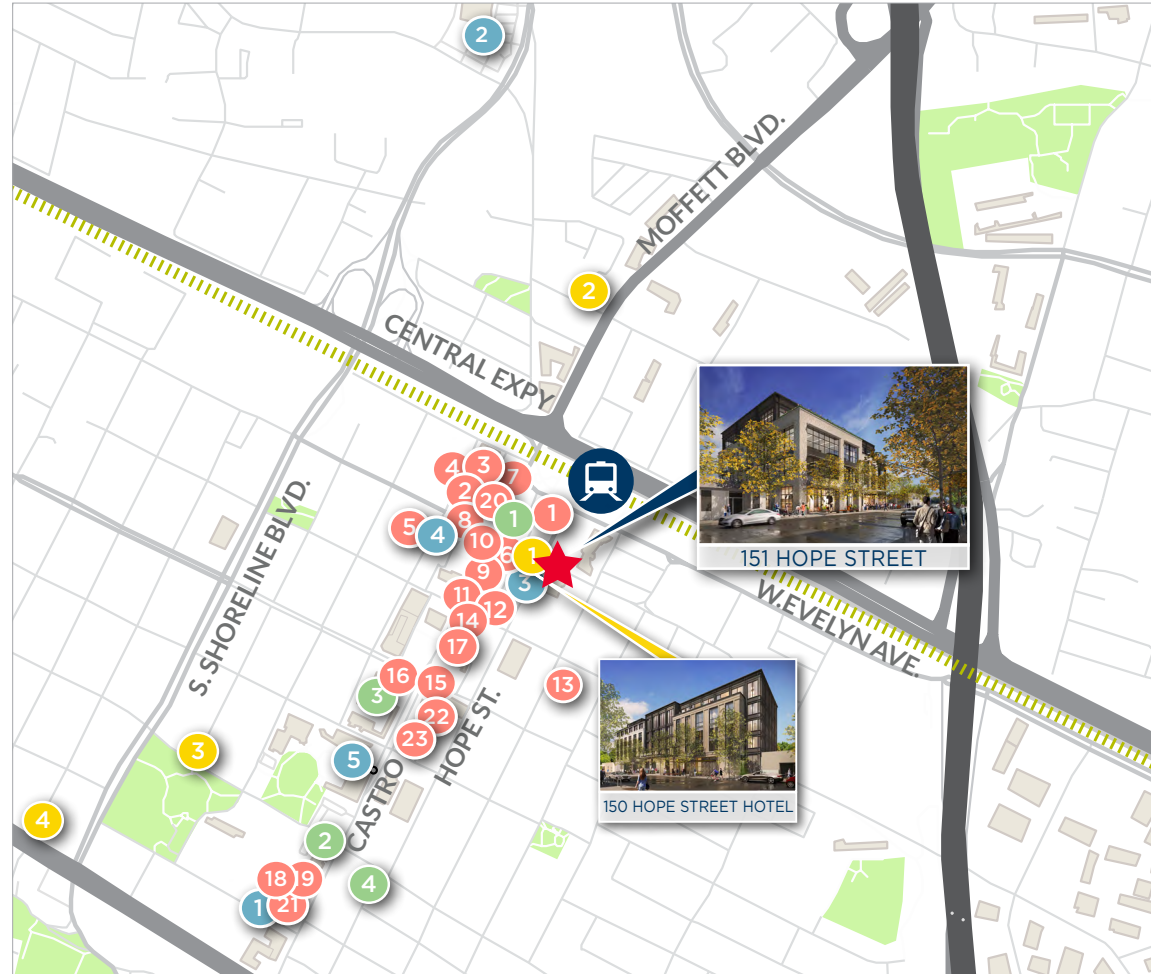
HOPE STREET
MOUNTAIN VIEW | CA

151

HOPE STREET
MOUNTAIN VIEW | CA



nearby amenities



RESTAURANTS

- 1 Subway
- 2 Doppio Zero
- 3 Vaso Azzurro Ristorante
- 4 Bushido Izakaya
- 5 Chez TJ
- 6 Fiesta Del Mar Too
- 7 Xanh Restaurant
- 8 St. Stephen's Green
- 9 Ristorante Don Giovanni
- 10 Gelato Italian Ice Cream
- 11 Queen House
- 12 Dana Street Roasting Co.
- 13 Sushi Tomi
- 14 La PanotiQ Bakery Café
- 15 Scratch
- 16 Cascal
- 17 Bierhaus
- 18 Le Boulanger
- 19 Starbucks
- 20 Asian Box
- 21 Amici's
- 22 Casa Lupe
- 23 Kirin

RETAIL

- 1 UPS Store
- 2 Safeway
- 3 US Post Office
- 4 Books Inc
- 5 CVS

BANKS

- 1 West America Bank
- 2 Wells Fargo
- 3 Bank of America
- 4 Bank of the West

HOTELS

- 1 150 Hope Street Boutique Lifestyle Hotel (in development)
- 2 Hampton Inn & Suites
- 3 Americas Best Value Inn

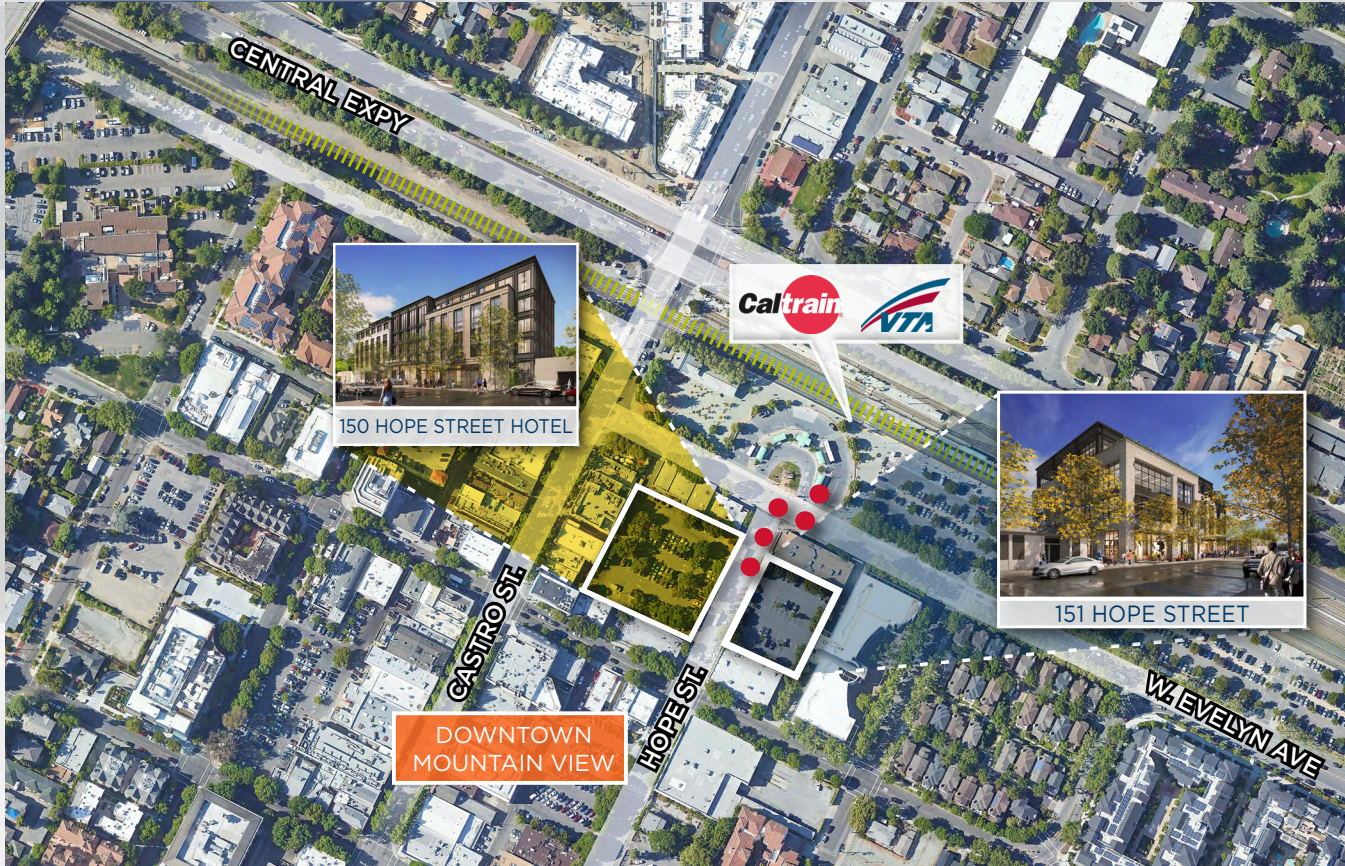
- 4 Holiday Inn Express

TRANSPORTATION



be connected

ADJACENT TO CALTRAIN STATION ● ● ●



151

HOPE STREET
MOUNTAIN VIEW | CA



DEVELOPED BY:



www.therobergreencompany.com

David Hiebert

Vice Chairman
+1 650 320 0250
david.hiebert@cushwake.com
Lic #01189320

Dan Persyn

Executive Managing Director
+1 650 320 0255
dan.persyn@cushwake.com
Lic #01184798

525 University Ave, Suite 220
Palo Alto, California 94301
main +1 650 852 1200
fax +1 650 856 1098
cushmanwakefield.com



©2019 Cushman & Wakefield. All rights reserved. The information contained in this communication is strictly confidential. This information has been obtained from sources believed to be reliable but has not been verified. No warranty or representation, express or implied, is made as to the condition of the property (or properties) referenced herein or as to the accuracy or completeness of the information contained herein, and same is submitted subject to errors, omissions, change of price, rental or other conditions, withdrawal without notice, and to any special listing conditions imposed by the property owner(s). Any projections, opinions or estimates are subject to uncertainty and do not signify current or future property performance.