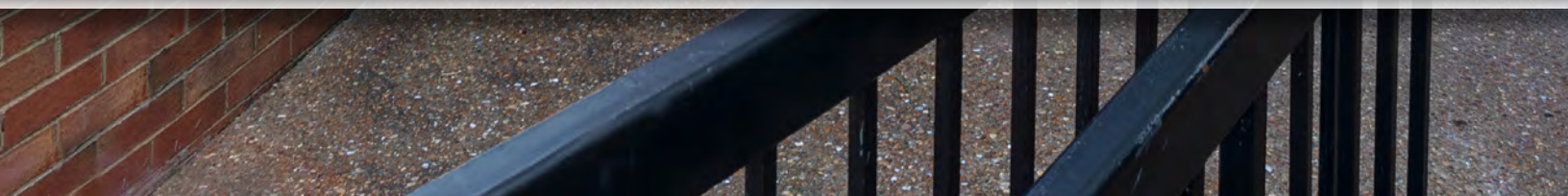




**FOR SALE OR LEASE**

2001 GLEN ECHO ROAD

NASHVILLE, TN 37215





FOR SALE OR LEASE

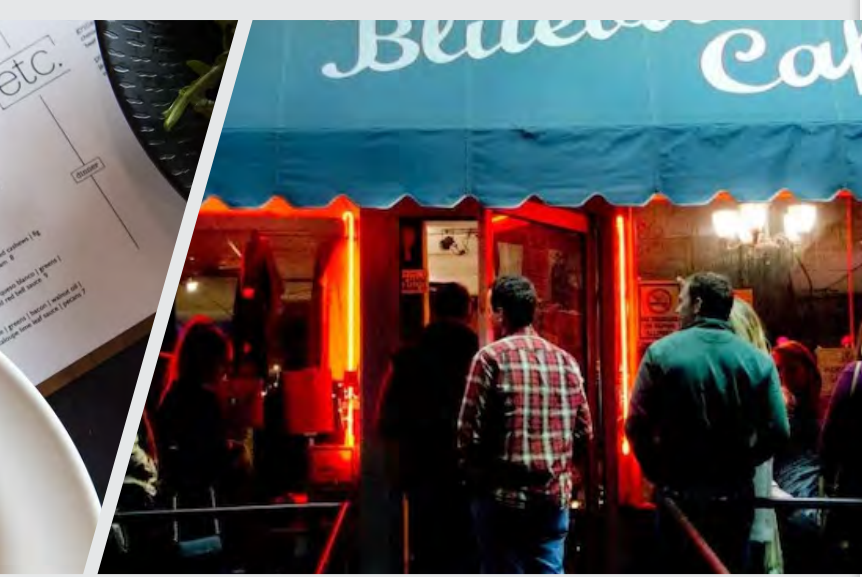
# 2001 GLEN ECHO ROAD

7,662 RSF

## About the Location

Green Hills is an upscale suburban enclave about 15 minutes from the city’s vibrant downtown. It’s just south of Interstate 440 and north of Harding Place. Green Hills is near Belmont, Vanderbilt and Lipscomb universities; and several hospitals and medical centers, including Vanderbilt University Medical Center, St. Thomas West, St. Thomas Midtown and TriStar Centennial Medical Center. It features a major retail section, known for it’s upscale brands and boutiques, in its center that attracts not only residents, but also others from the Greater Nashville area.





1.1 Miles to I-440

.....



6 Miles to Downtown Nashville

.....



2 Major Hospitals Nearby

.....

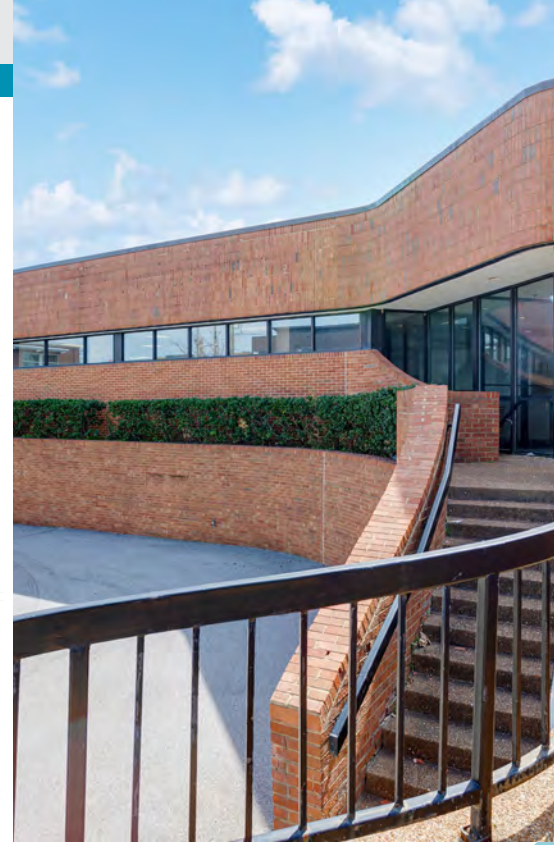


3 Universities Nearby



# Property Highlights

<b>Total Building Area</b>	7,662 sf
<b>Land Area</b>	0.39 acres
<b>Year Built</b>	1979
<b>Parking Ratio</b>	4 per 1,000 sf
<b>Zoning</b>	Scr: Shopping Center Regional / Ov-Udo: Urban Design Overlay
<b>Exterior</b>	Brick/Commercial Masonry





**Priced at  
\$4.1 Million**

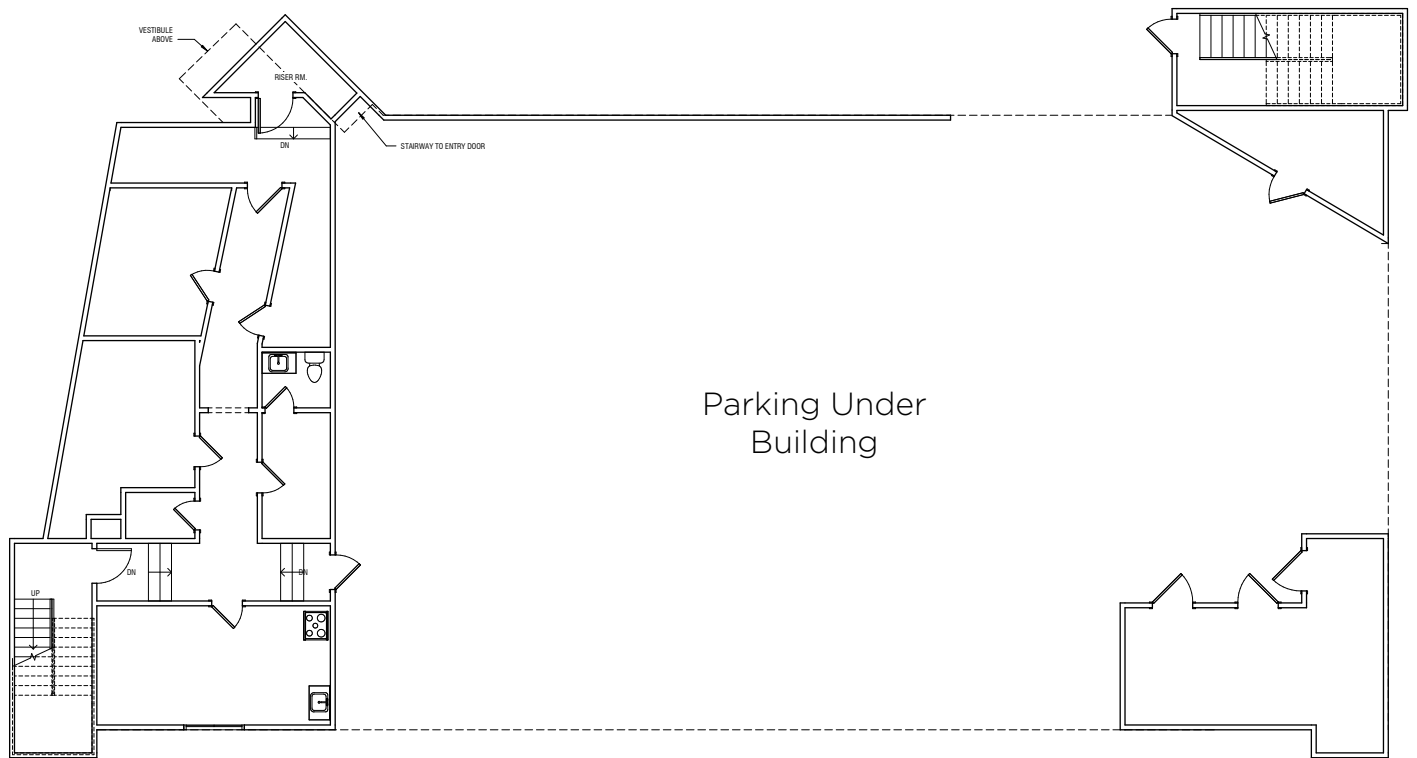
**7,662 Sf  
Freestanding  
Building Centrally  
Located in  
Green Hills**

**Rare  
Owner/Occupant  
Opportunity For  
Office/Retail/Medical  
in Green Hills**

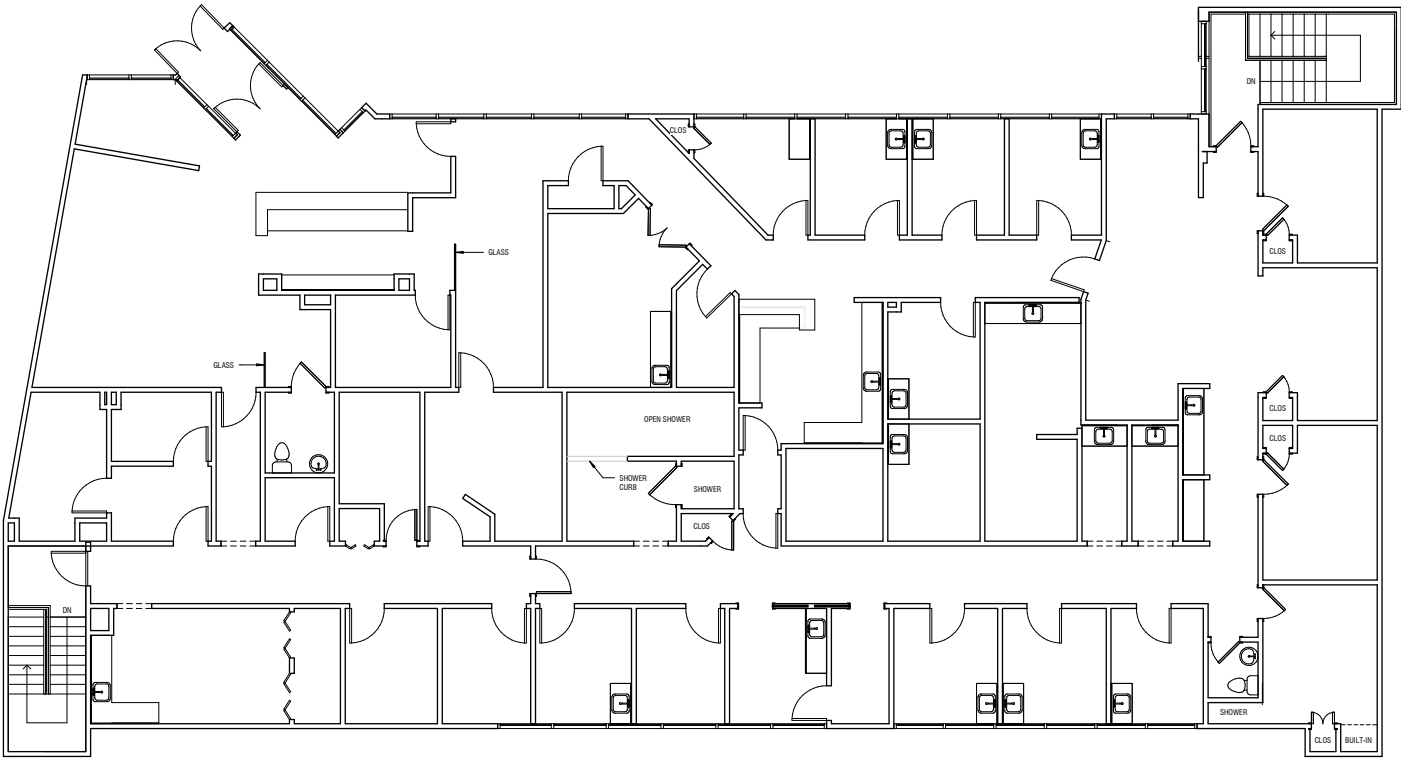
**Ideal For  
An Owner/  
Occupant In  
Need Of A Highly  
Visible Green  
Hills location**

# Floor Plans

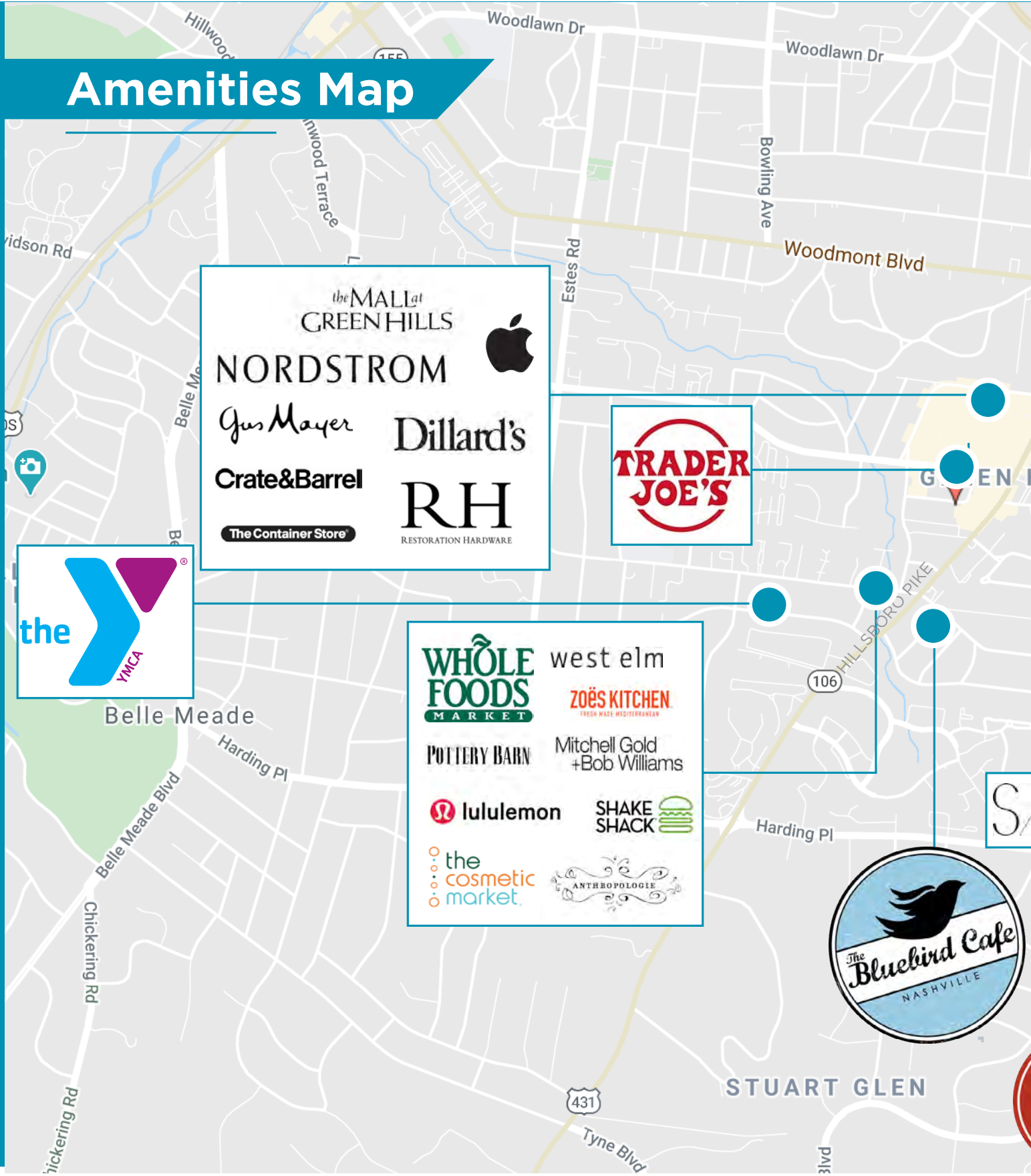
## LOWER LEVEL



# LEVEL ONE



# Amenities Map



theMALLat  
GREEN HILLS

NORDSTROM

Apple

Gus Mayer

Dillard's

Crate&Barrel

RH  
RESTORATION HARDWARE

The Container Store

TRADER  
JOE'S

the  
YMCA

west elm

WHOLE FOODS MARKET

POTTERY BARN

lululemon

the cosmetic market

zoë's KITCHEN  
FRESH MADE MEDITERRANEAN

Mitchell Gold + Bob Williams

SHAKE SHACK

ANTHROPOLOGIE

The Bluebird Cafe  
NASHVILLE

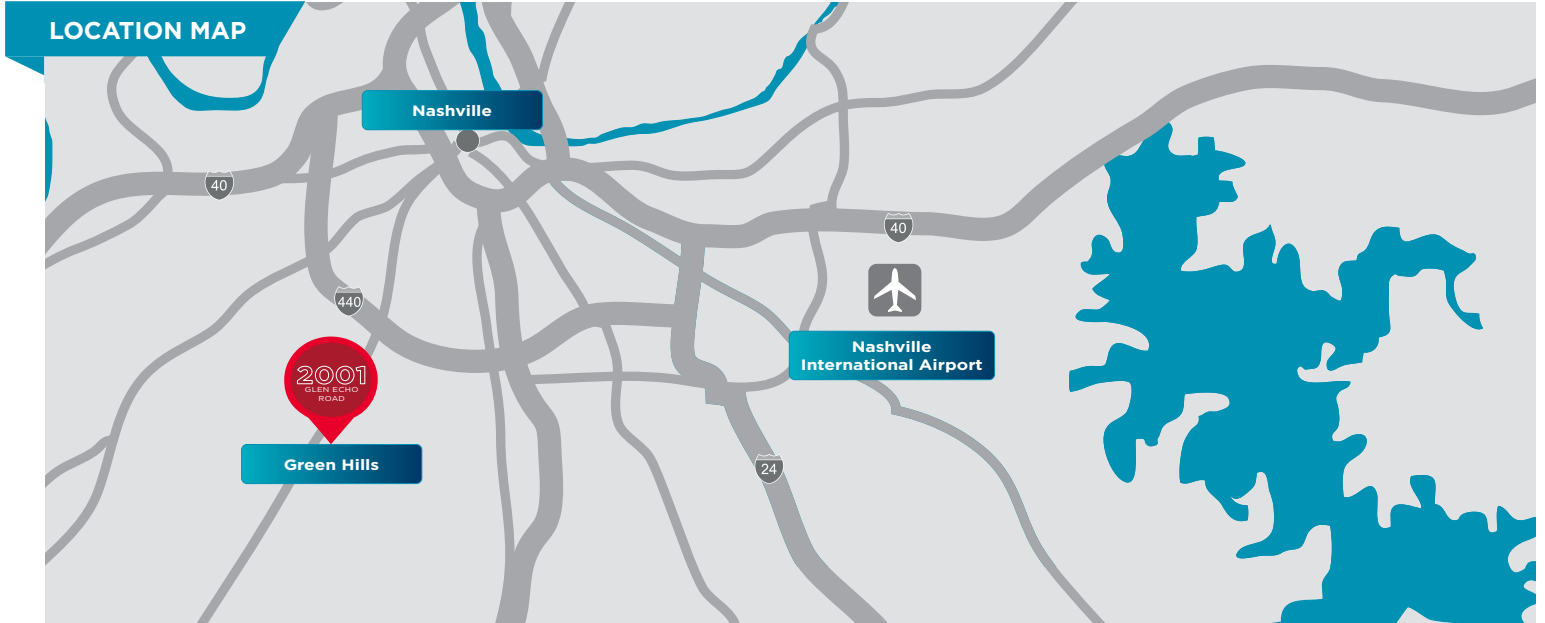






FOR SALE OR LEASE  
2001 GLEN ECHO ROAD

7,662 RSF



**CHARLIE GIBSON, CCIM**  
+1 615 301 2820  
charlie.gibson@cushwake.com

**STEWART LYMAN**  
+1 615 301 2843  
stewart.lyman@cushwake.com

**CAMERON GRIER**  
+1 615 301 2827  
cameron.grier@cushwake.com

