

3200 W. FOURTEEN MILE ROAD
ROYAL OAK, MICHIGAN

INDUSTRIAL FOR SALE
77,550 Square Feet Available



**SIGNATURE
ASSOCIATES**
KNOW SIGNATURE | KNOW RESULTS

MAIN ROAD EXPOSURE



PROPERTY FEATURES

- 77,550 square feet available
- 8,717 square feet of office space
- 15'-18' clear height
- (3) 12x14, 10x10 grade level doors, (4) truckwells
- Zoned general industrial
- Built in 1942, retrofitted in 1990
- Located on 5.630 acres
- Solid manufacturing building with tremendous main road exposure
- Includes 7,950 square feet stand-alone building at the rear of the property
- 2000 amps, 480 volts power
- Sale Price: \$3,500,000 (\$45.13/sq. ft.)



For more information, please contact:

JOE BANYAI
(248) 948 0108

jbanyai@signatureassociates.com

BEN WILKIEMEYER
(248) 359 0624

bwilkiemeyer@signatureassociates.com

SIGNATURE ASSOCIATES
One Towne Square, Suite 1200
Southfield, MI 48076
www.signatureassociates.com

77,550
Square Feet
AVAILABLE

[illegible]

SIGNATURE ASSOCIATES
One Towne Square, Suite 1200
Southfield, MI 48076
www.signatureassociates.com

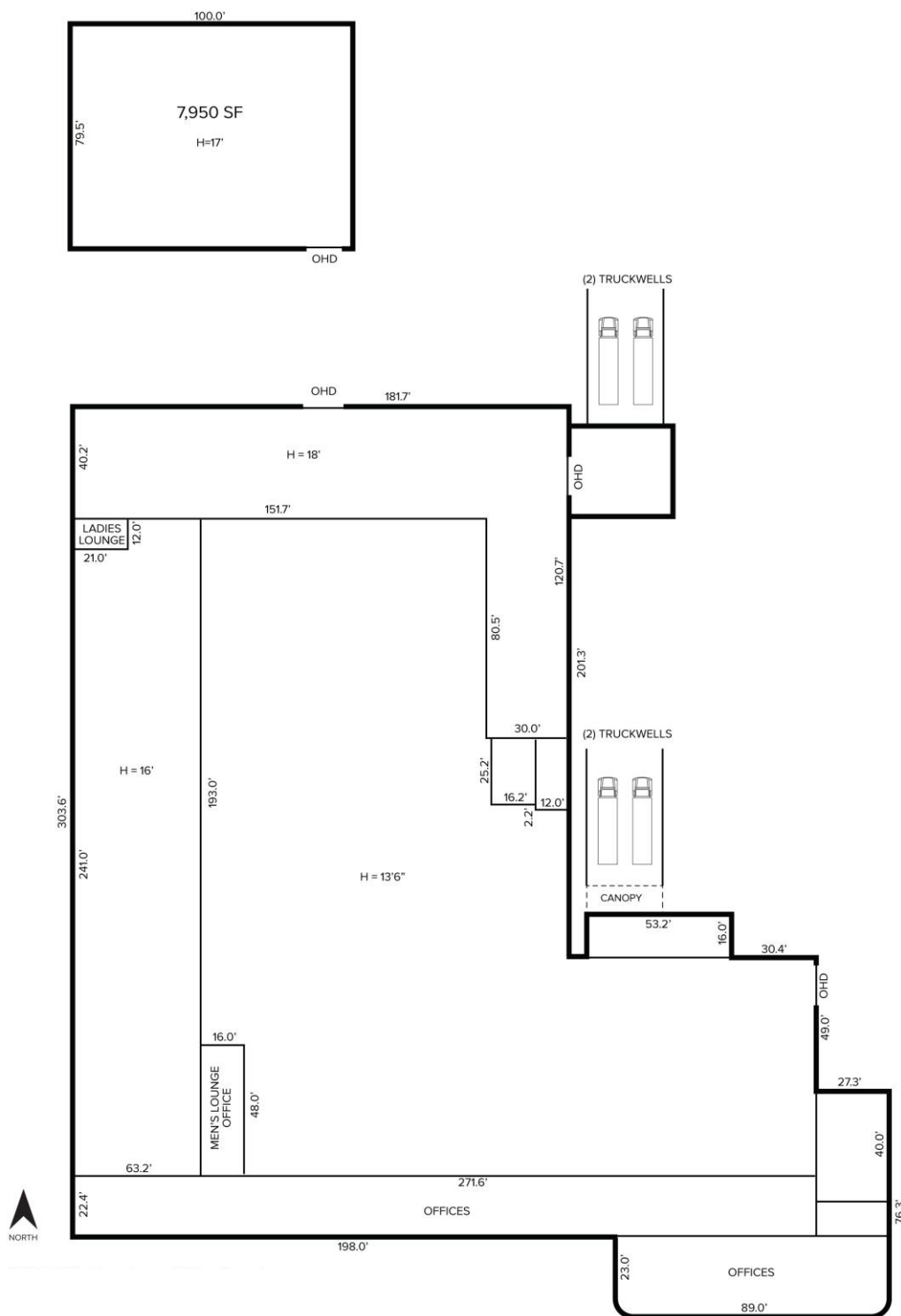
Information is subject to verification and no liability for errors or omissions is assumed. Price is subject to change and listing withdrawal.

3200 W. Fourteen Mile Road – Royal Oak, Michigan

Industrial For Sale

77,550
Square Feet
AVAILABLE

Floor Plan



For more information, please contact:

JOE BANYAI
(248) 948 0108

jbanyai@signatureassociates.com

BEN WILKIEMEYER
(248) 359 0624

bwilkiemeyer@signatureassociates.com

SIGNATURE ASSOCIATES
One Towne Square, Suite 1200
Southfield, MI 48076
www.signatureassociates.com