



# Available For Lease



New dynamic retail opportunity in the heart of Downtown Olympia near all new developments

Proposed 4000+ SF three tenant building with signage options on 4th Avenue E , 5th Avenue SE, and Adams Street SE

South parking area of Pet Works property, looking for top-end retail tenants to fill the growing demand

Starting at \$24.00/SF, plus NNN

[kiddermathews.com](http://kiddermathews.com)

## Contact

**Ryan Haddock**  
360.596.9151  
[rhaddock@kiddermathews.com](mailto:rhaddock@kiddermathews.com)

# 5th & Adams Retail

407 4th Avenue E, Olympia, WA



## Contact

**Ryan Haddock**

360.596.9151

rhaddock@kiddermathews.com

[kiddermathews.com](http://kiddermathews.com)

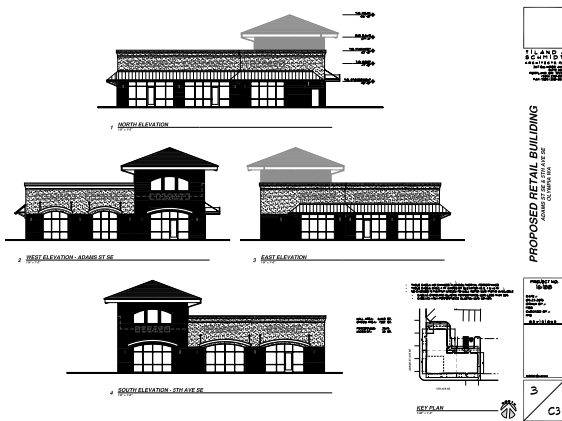
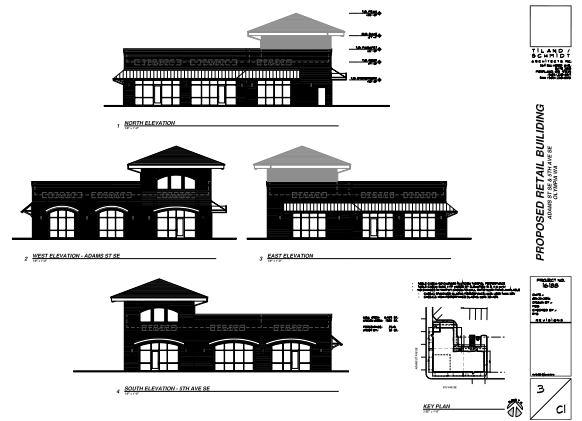
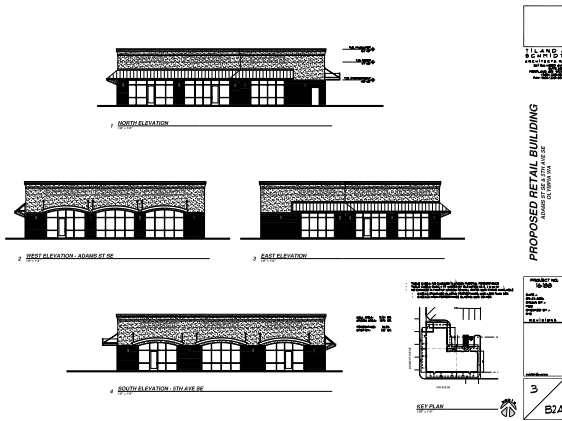
This information supplied herein is from sources we deem reliable. It is provided without any representation, warranty or guarantee, expressed or implied as to its accuracy. Prospective Buyer or Tenant should conduct an independent investigation and verification of all matters deemed to be material, including, but not limited to, statements of income and expenses. Consult your attorney, accountant, or other professional advisor.



# 5th & Adams Retail

407 4th Avenue E, Olympia, WA

## Proposed Elevations



## Contact

**Ryan Haddock**  
360.596.9151  
rhaddock@kiddermathews.com

[kiddermathews.com](http://kiddermathews.com)

This information supplied herein is from sources we deem reliable. It is provided without any representation, warranty or guarantee, expressed or implied as to its accuracy. Prospective Buyer or Tenant should conduct an independent investigation and verification of all matters deemed to be material, including, but not limited to, statements of income and expenses. Consult your attorney, accountant, or other professional advisor.

