

HUDSON ROAD WATERFORD, MICHIGAN

VACANT LAND FOR SALE
9.68 Acres Available

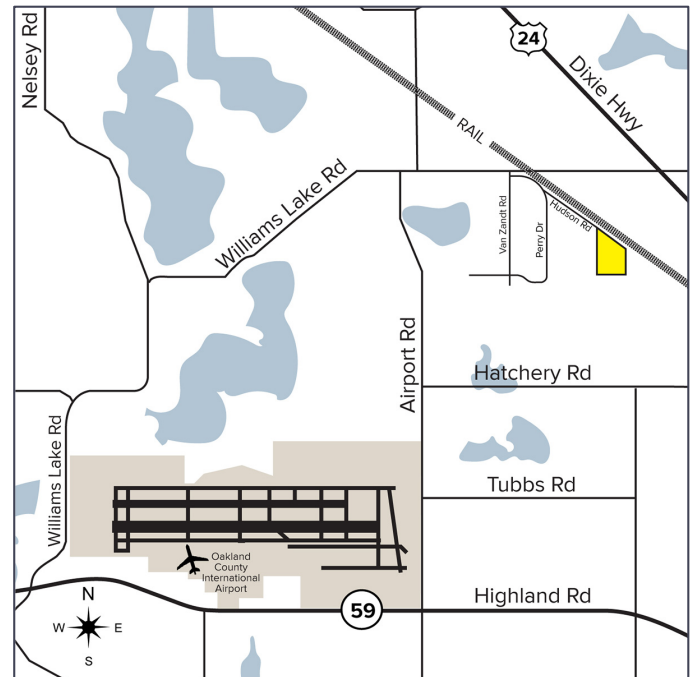


**SIGNATURE
ASSOCIATES**
KNOW SIGNATURE | KNOW RESULTS



PROPERTY FEATURES

- 22.04 gross acre site with 9.68 acres of useable land
- Zoned M-2, General Industrial
- Adjacent to CSX rail line
- 8" waterline at site
- Sanitary sewer 400' away
- Sale price: \$995,000 (\$102,789.26/acre)



For more information, please contact:

PAUL HOGE
(248) 948 0103
paulhoge@signatureassociates.com

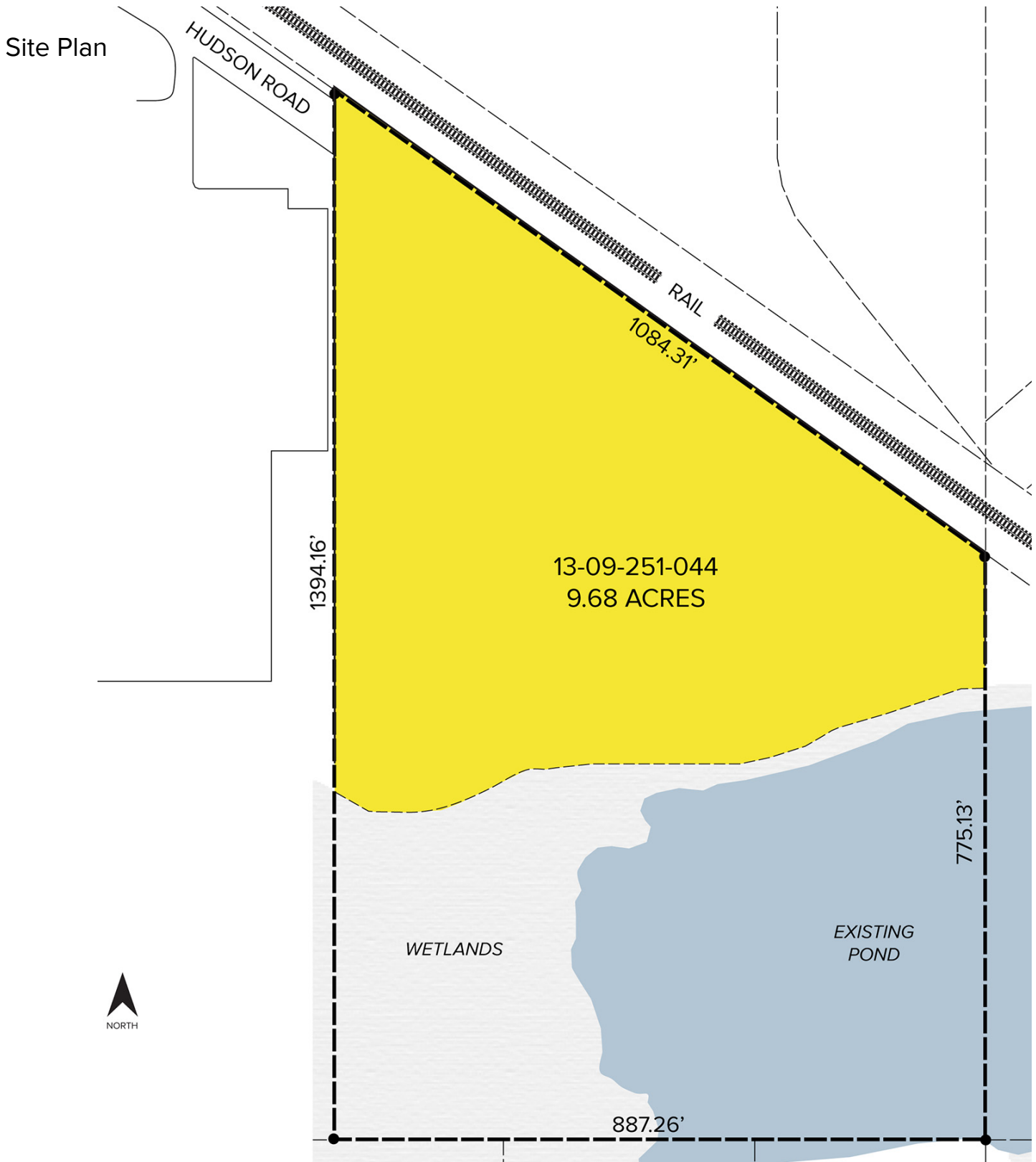
JIM MONTGOMERY
(248) 359 0614
jmontgomery@signatureassociates.com

SIGNATURE ASSOCIATES
One Towne Square, Suite 1200
Southfield, MI 48076
www.signatureassociates.com

Hudson Road – Waterford, Michigan

Land For Sale

9.68
Acres
AVAILABLE



For more information, please contact:

PAUL HOGE
(248) 948 0103
paulhoge@signatureassociates.com

JIM MONTGOMERY
(248) 359 0614
jmontgomery@signatureassociates.com

SIGNATURE ASSOCIATES
One Towne Square, Suite 1200
Southfield, MI 48076
www.signatureassociates.com

Information is subject to verification and no liability for errors or omissions is assumed. Price is subject to change and listing withdrawal.