

# 11250

## WAPLES MILL



**8,977 SF** OFFICE SPACE AVAILABLE IMMEDIATELY

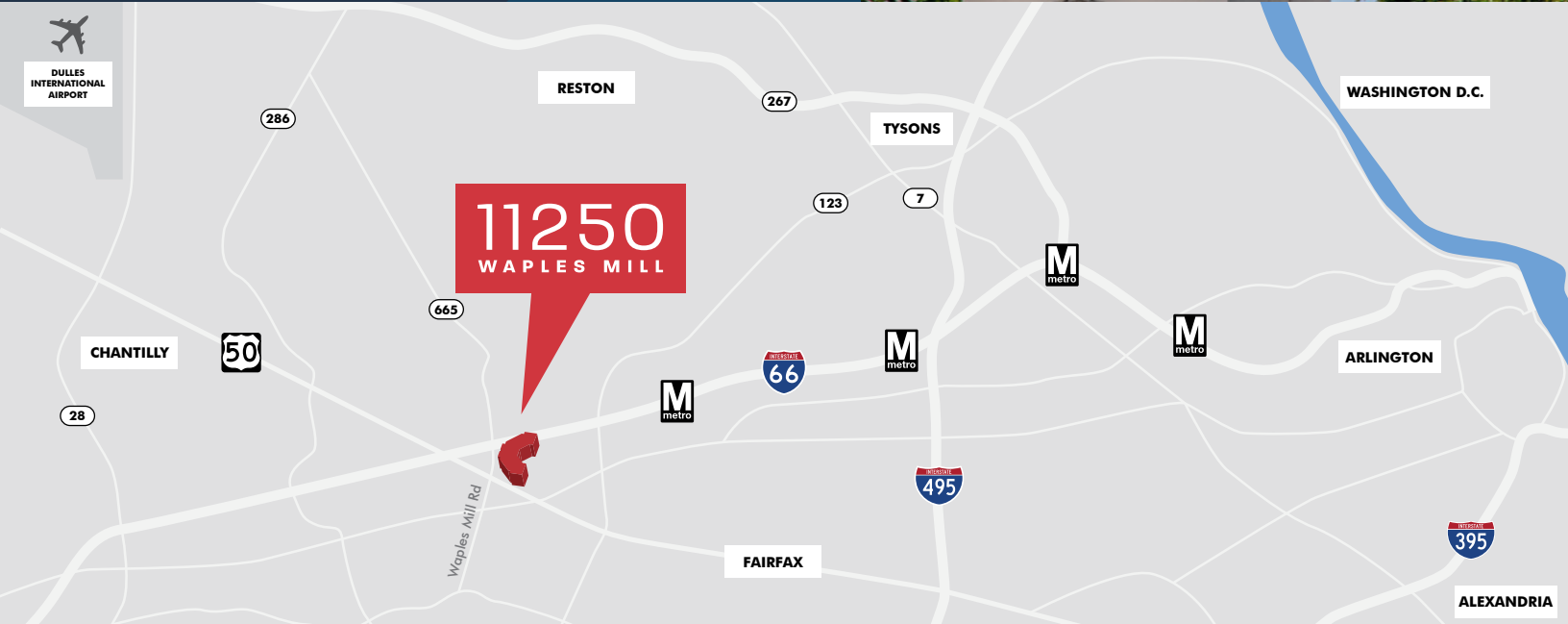
11250 WAPLES MILL ROAD | FAIRFAX, VIRGINIA 22030

**CBRE**



# LOCATION & ACCESS

Ideally located at the crossroads of I-66 and Route 50, 11250 Waples Mill offers rapid access to Washington D.C. and all Northern Virginia



## TIME TO

FAIRFAX	5 MINUTES
MERRIFIELD	15 MINUTES
TYSONS	17 MINUTES
DULLES INTERNATIONAL AIRPORT	19 MINUTES
WASHINGTON D.C.	30 MINUTES
REAGAN NATIONAL AIRPORT	30 MINUTES







## NEIGHBORHOOD AMENITIES

Steps away from restaurants, cafés and shopping, employees and visitors will enjoy a wide variety of dining options



# BUILDING FEATURES & AMENITIES



CONFERENCING FACILITY



FITNESS CENTER



FOOD SERVICE



OUTDOOR LOUNGE



AMPLE PARKING



ON-SITE PROPERTY MANAGEMENT



24-HOUR ACCESS



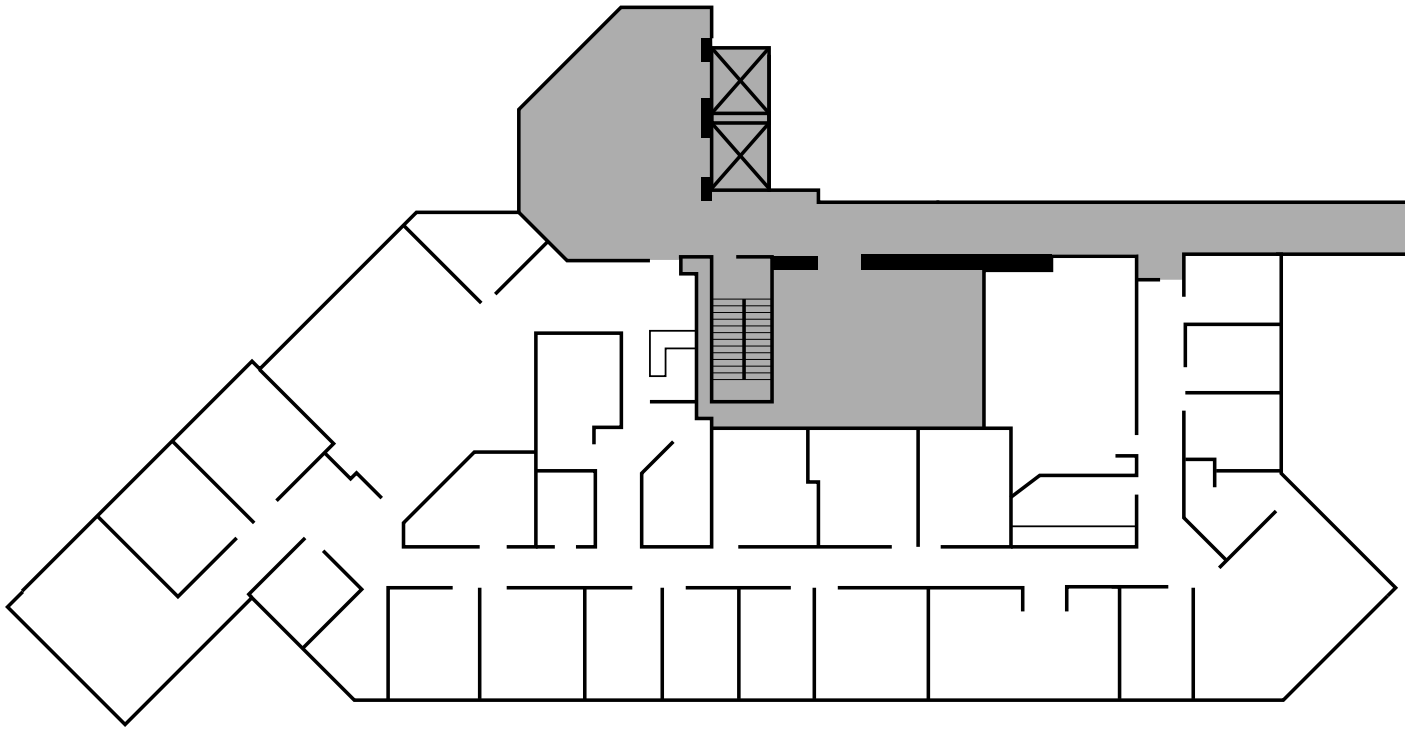
LIGHT-FILLED ATRIUM





# FLOOR PLAN

3RD FLOOR - 8,977 SF



# 11250

## WAPLES MILL

11250 WAPLES MILL ROAD | FAIRFAX, VIRGINIA 22030



### FOR MORE INFORMATION

---

**MALCOLM SCHWEIKER**

+1 703 734 4716

[malcolm.schweiker@cbre.com](mailto:malcolm.schweiker@cbre.com)

**ERIK MCLAUGHLIN**

+1 703 288 2548

[erik.mclaughlin@cbre.com](mailto:erik.mclaughlin@cbre.com)

**CHLOE ZULICK**

+1 703 734 4738

[chloe.zulick@cbre.com](mailto:chloe.zulick@cbre.com)



©2021 CBRE, Inc. All rights reserved. This information has been obtained from sources believed reliable, but has not been verified for accuracy or completeness. Any projections, opinions, or estimates are subject to uncertainty. The information may not represent the current or future performance of the property. You and your advisors should conduct a careful, independent investigation of the property and verify all information. Any reliance on this information is solely at your own risk. CBRE and the CBRE logo are service marks of CBRE, Inc. and/or its affiliated or related companies in the United States and other countries. All other marks displayed on this document are the property of their respective owners. Photos herein are the property of their respective owners and use of these images without the express written consent of the owner is prohibited. 12 28 2020

**CBRE**