

For Sale

Walmart Outlot
Waverly, Iowa



2700 4th Street Southwest Waverly, Iowa

- Lot 1 | 1.04± Acres
- C-2 Commercial District
- Retail, restaurant with drive thru or office
- The county seat of Bremer County
- Great access & visibility from Hwy 218, close to most area businesses

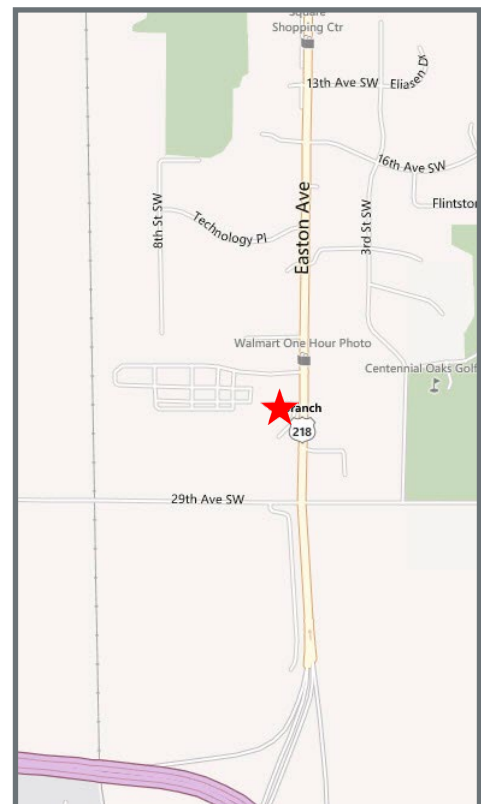
Demographics	City	County
Est. Population:	9,874	23,325
Est. Median Income:	\$23,325	\$40,826

For more information:

Carl LaSala

+1 913 956 5805

carl@nai-heartland.com



NO WARRANTY OR REPRESENTATION, EXPRESS OR IMPLIED, IS MADE AS TO THE ACCURACY OF THE INFORMATION CONTAINED HEREIN, AND THE SAME IS SUBMITTED SUBJECT TO ERRORS, OMISSIONS, CHANGE OF PRICE, RENTAL OR OTHER CONDITIONS, PRIOR SALE, LEASE OR FINANCING, OR WITHDRAWAL WITHOUT NOTICE, AND OF ANY SPECIAL LISTING CONDITIONS IMPOSED BY OUR PRINCIPALS NO WARRANTIES OR REPRESENTATIONS ARE MADE AS TO THE CONDITION OF THE PROPERTY OR ANY HAZARDS CONTAINED THEREIN ARE ANY TO BE IMPLIED.

4400 College Blvd Suite 170
Overland Park, Kansas 66211

+1 913 362 1000

nai-heartland.com

2700 4th Street SW | Waverly, IA
Site Plan

