

**OFFICE SPACE FOR LEASE**  
**6,508 RSF AVAILABLE**

**PROPERTY FEATURES**

- 6,508 RSF located on the 3<sup>rd</sup> floor
- Potential building signage available
- Three-story 45,000 SF Class A building
- Ample parking
- Building back-up generator
- Common fitness center, conference room and on-site storage
- On-site property management
- Adjacent to Woodlawn Shopping Center with numerous retail services restaurants and amenities
- Convenient Westport Road/I-264 interchange access
- See reverse for floor plans

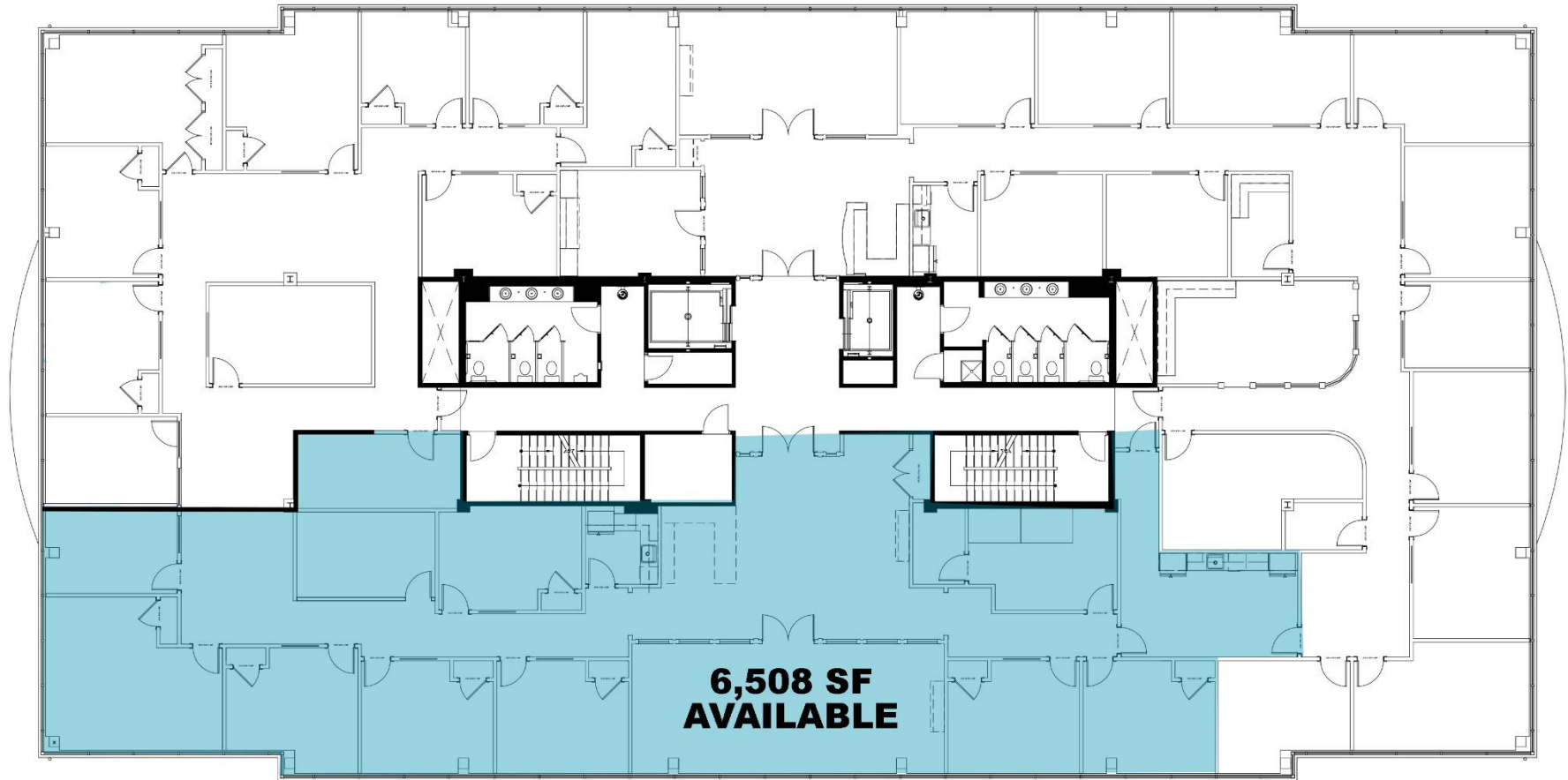
**WOODLAWN CENTER PHASE I**



For more information, please contact:

**BRENT BOLAND, CCIM**  
**Senior Director**  
502 384 4494 ext. 134  
bboland@commercialkentucky.com

333 E. Main Street, Suite 510  
Louisville, KY 40202  
phone: +1 502 589 5150  
www.CommercialKentucky.com

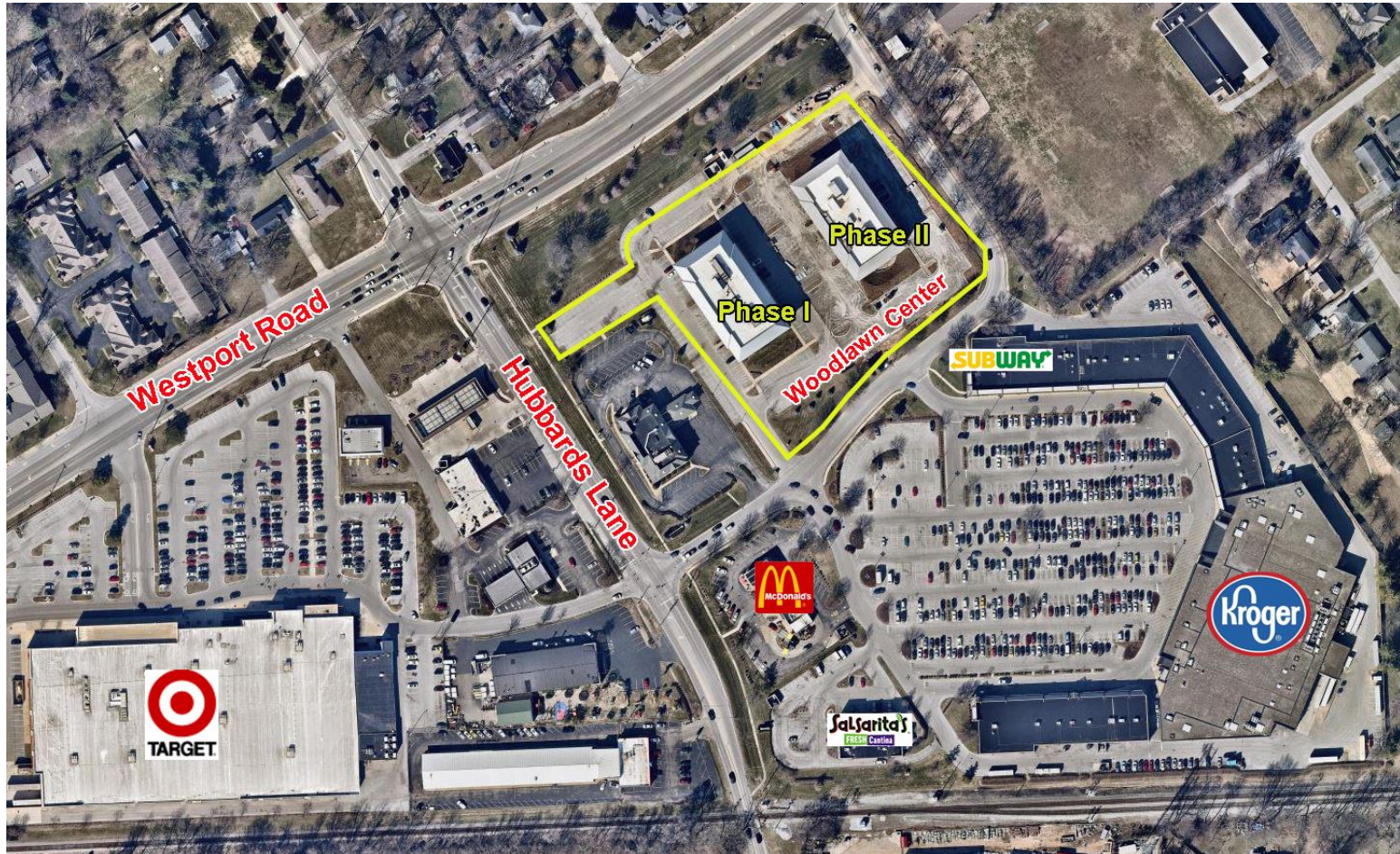


**Third Floor Plan**

For more information, please contact:

**BRENT BOLAND, CCIM**  
**Senior Director**  
502 384 4494 ext. 134  
bboland@commercialkentucky.com

333 E. Main Street, Suite 510  
Louisville, KY 40202  
phone: +1 502 589 5150  
www.CommercialKentucky.com



For more information, please contact:

**BRENT BOLAND, CCIM**  
Senior Director  
502 384 4494 ext. 134  
bboland@commercialkentucky.com

333 E. Main Street, Suite 510  
Louisville, KY 40202  
phone: +1 502 589 5150  
www.CommercialKentucky.com