

FOR LEASE

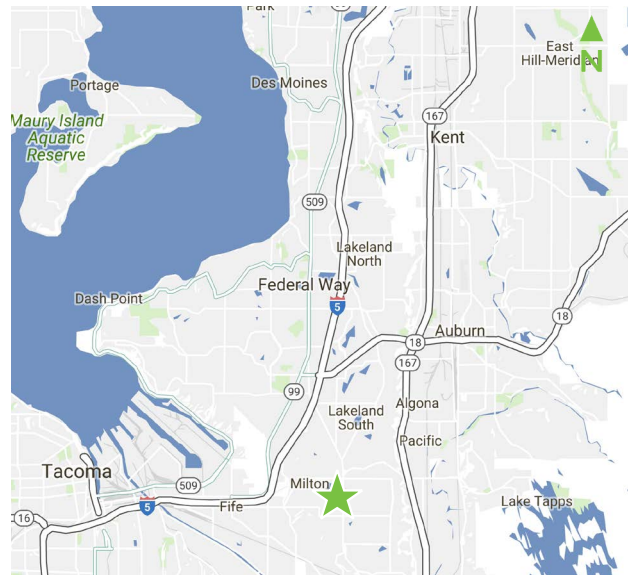
# MERIDIAN AVE E AT 24TH ST E

Edgewood, WA 98371



## PROPERTY OVERVIEW

- + Size: 25,399 SF
- + Rate: \$5,000 per month, NNN
- + Corner lot at lighted intersection
- + All major utilities to site
- + Zoning: Town Center (TC), Pierce County
- + Allowed uses include professional/medical office, daycare, multifamily, hotel
- + High traffic counts on Meridian Ave E



## CONTACT US

### KETNER SHEEAN

Senior Associate  
+1 253 596 0028  
ketner.sheean@cbre.com-

### BOB HACKER

Vice President  
+1 253 596 0049  
bob.hacker@cbre.com

### CBRE, INC.

1201 Pacific Avenue  
Suite 1502  
Tacoma, WA 98402

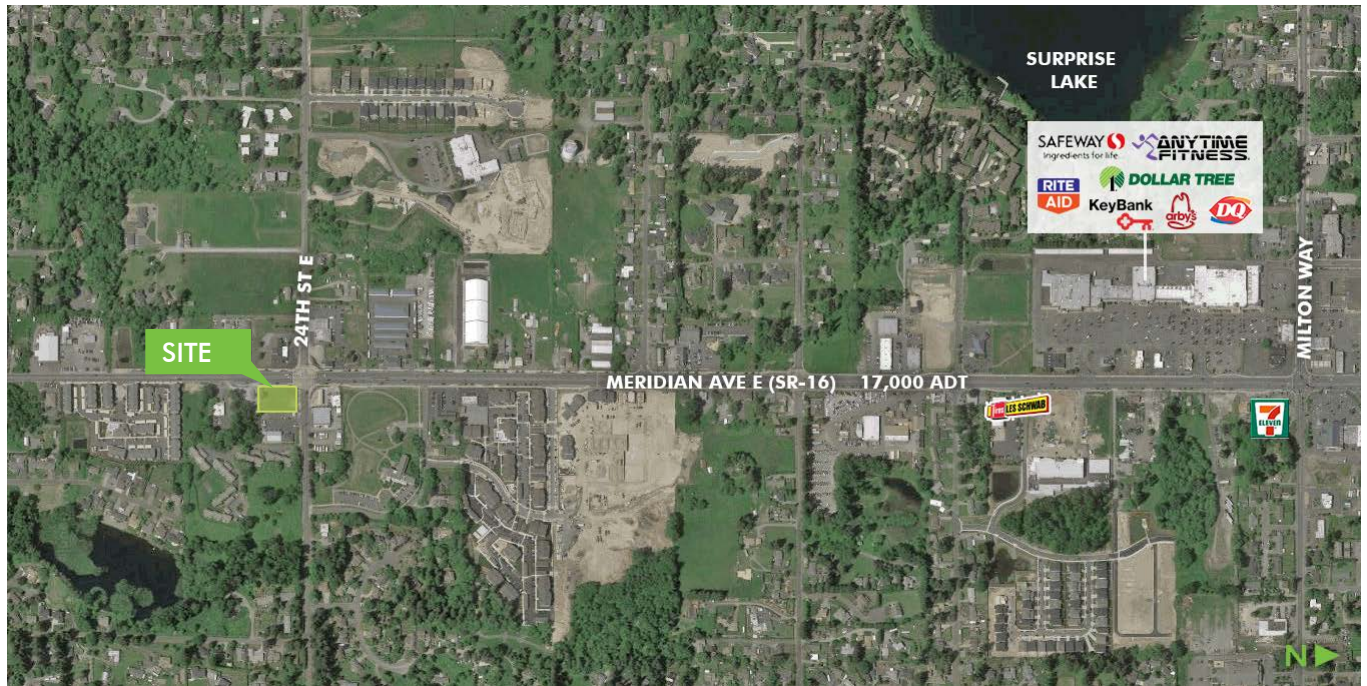
[www.cbre.us/tacoma](http://www.cbre.us/tacoma)

**CBRE**

# FOR LEASE MERIDIAN AVE E AT 24TH ST E



## AERIAL MAP



## AREA DEMOGRAPHICS

	1 Mile	3 Miles	5 Miles
<b>Population</b>	5,782	52,953	164,697
<b>Average Household Income</b>	\$103,215	\$88,964	\$88,178
<b>Daytime Population</b>	4,802	60,562	188,471

© 2018 CBRE, Inc. All rights reserved. This information has been obtained from sources believed reliable, but has not been verified for accuracy or completeness. You should conduct a careful, independent investigation of the property and verify all information. Any reliance on this information is solely at your own risk. CBRE and the CBRE logo are service marks of CBRE, Inc. All other marks displayed on this document are the property of their respective owners. Photos herein are the property of their respective owners. Use of these images without the express written consent of the owner is prohibited..RB 08.20.18