

COMMERCIAL PROPERTY FOR SALE



**CLASS A & B DEALERSHIP
LICENSE AVAILABLE**

5079 Canterbury Drive

Brighton, MI 48114



1111 W. Oakley Park Road
Suite 220
Commerce, Michigan 48390
(248) 359-9000 – Detroit Office
(616) 241-2200 – Grand Rapids Office

www.insitecommercial.com

COMMERCIAL PROPERTY FOR SALE

**5079 Canterbury Drive,
Brighton, MI**

SUMMARY	page 1
AERIAL	page 2
PICTURES	pages 3-6
FLOOR PLAN	page 7
PLOT MAP	page 8
SURVEY	page 9
AREA MAPS	page 10
DEMOGRAPHICS	pages 11-13



PROPERTY SUMMARY

Location: 5079 Canterbury Drive
Brighton, MI 48114

Total Building Size: +/-6,700 SF

Total Land Size: 0.58 Acres

Sale Price: \$695,000
Class A & B Dealership License
For Sale @ \$50,000.

Zoning: B3 – Special Business

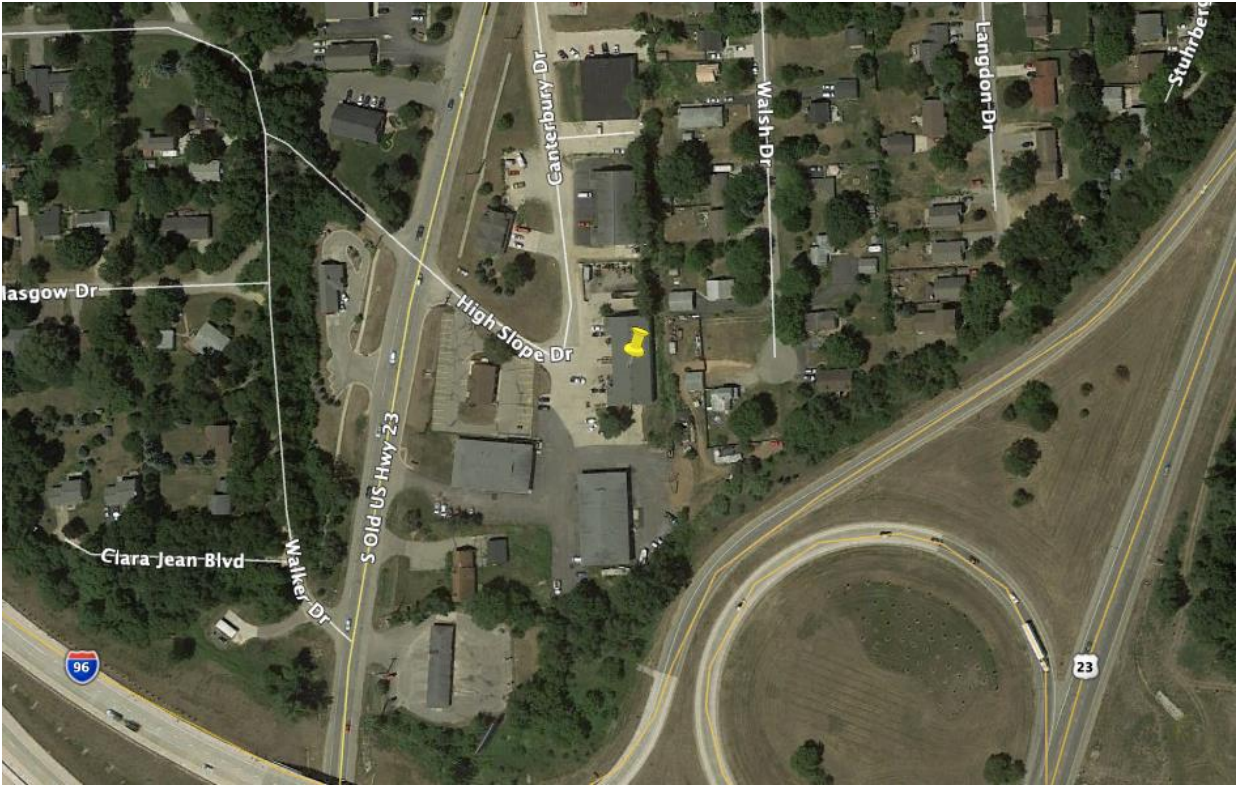
Year Built: 1975

Demographics within a 5 mile radius: Population: 48,703 Persons
Households: 19,624 Homes
Avg. HH Income: \$124,417 Annually
Traffic Counts: 11,410 VPD on US-23

Comments: This property is located closely to I-96 and US-23 highways, along with Grand River Avenue. High ceilings allow for extra storage inside the building, which has two overhead doors and a truck well. There is also a fenced lot on the north side of the property. Two 200 amp electrical system, and 3 Phase power system is available at the street.

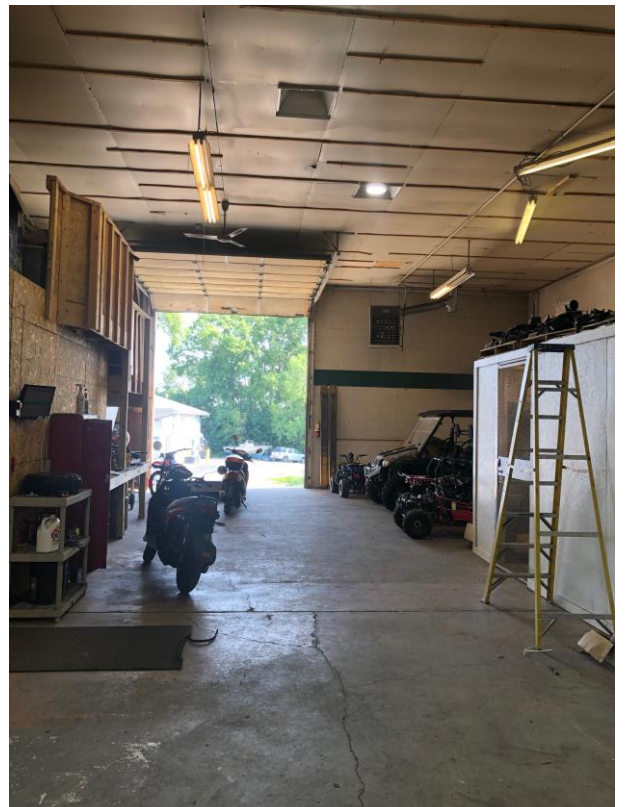
For Information Contact:
Kyle Nelson or Randy Thomas
248-359-9000

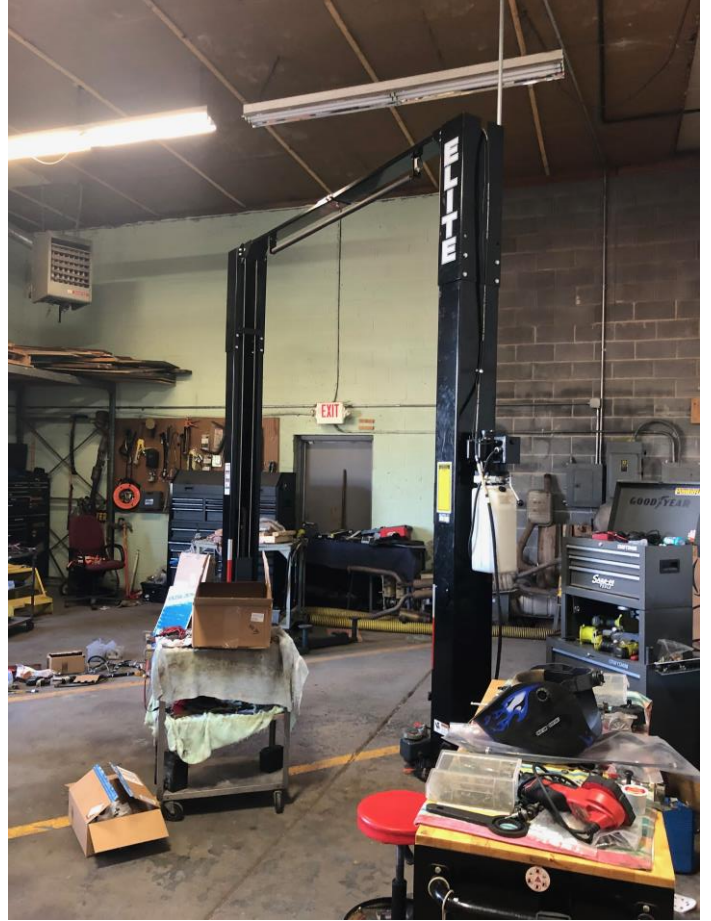




OFFICE | INDUSTRIAL | **RETAIL** | LAND | INVESTMENT | TENANT REPRESENTATION | CORPORATE SERVICES | PROPERTY MANAGEMENT | AVIATION SERVICES





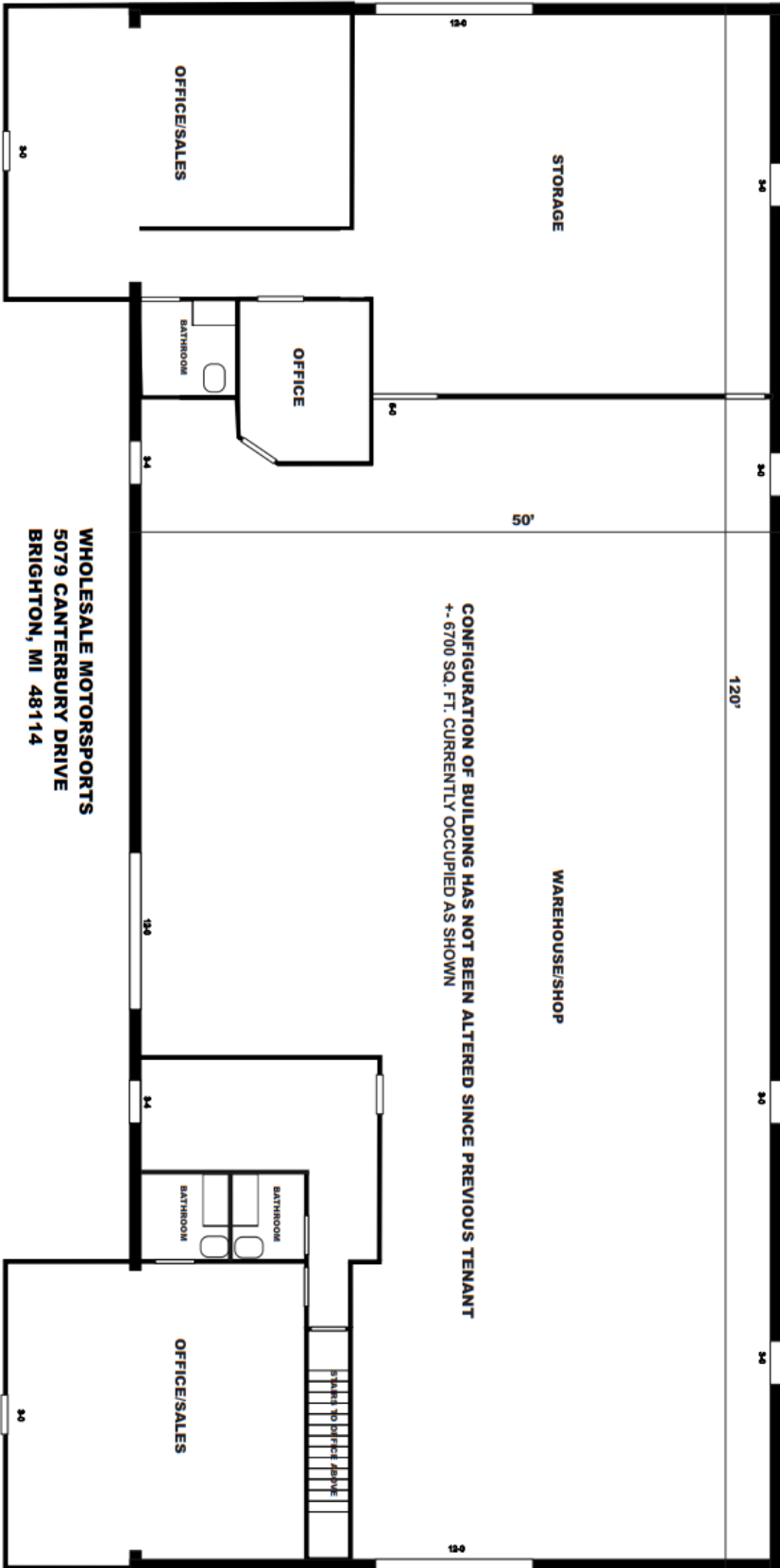




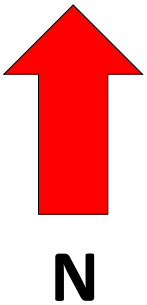


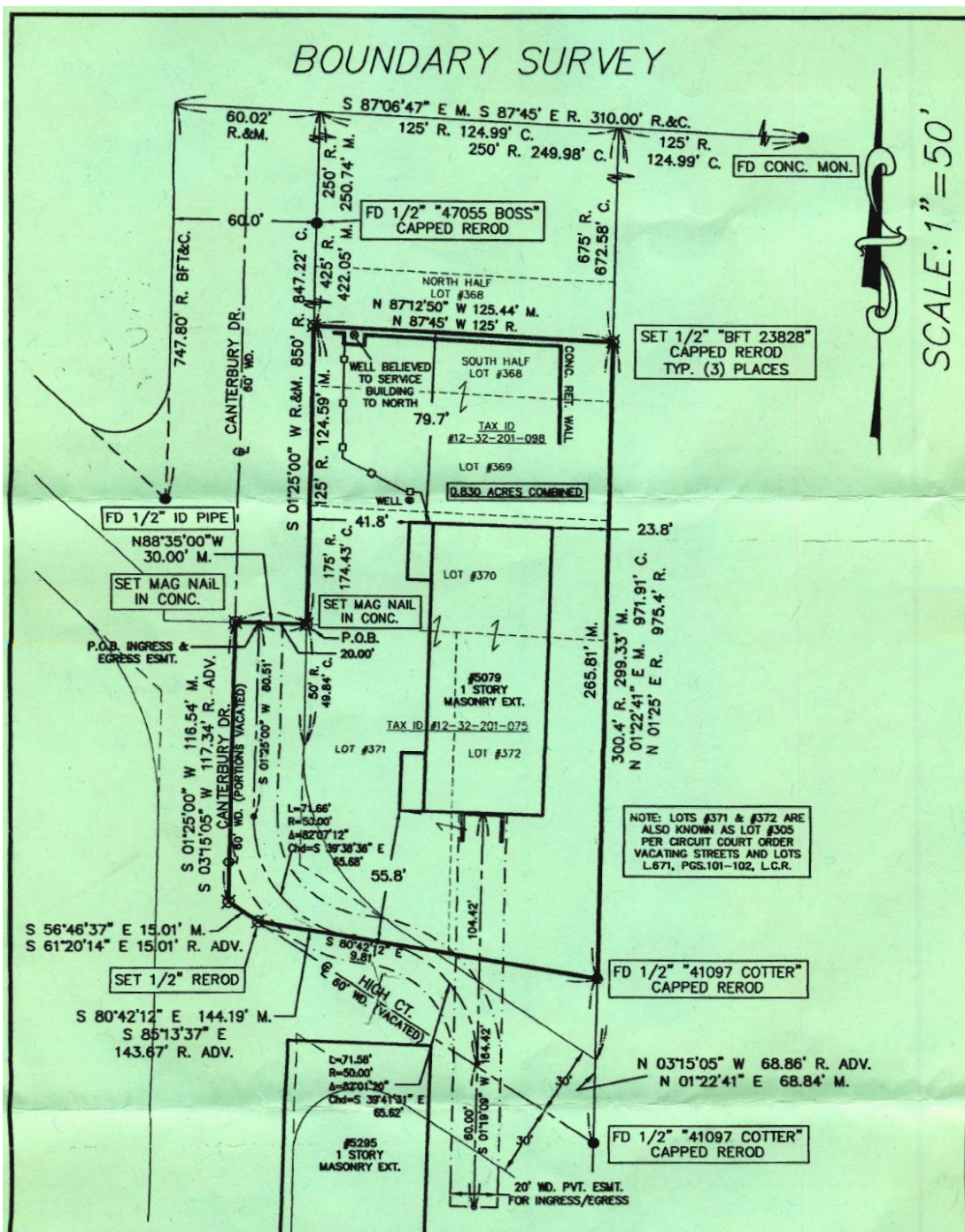
FLOOR PLAN

OFFICE | INDUSTRIAL | RETAIL | LAND | INVESTMENT | TENANT REPRESENTATION | CORPORATE SERVICES | PROPERTY MANAGEMENT | AVIATION SERVICES



WHOLESALE MOTORSPORTS
5079 CANTERBURY DRIVE
BRIGHTON, MI 48114





R. ADV. = RECORDED INFORMATION FROM ADVANTAGE SURVEY, NO. 03146, DATED: 11-05-03
 R. BFT = RECORDED INFORMATION FROM BF THOMPSON, PC SURVEY, NO. 88-2060, DATED: 9-15-88 Copyright © B.F.THOMPSON,P.C.

BASIS OF BEARING: EAST LINE OF CANTERBURY DR. = S 01°25' W PER PLAT
NTS= Not to Scale **(R)=**Recorded **(M)=**Measured **(C)=**Calculated **●=**Found Iron **⊗=**Set Iron **✖=**Fence

TAX I.D. #12-32-201-075,-098 CERTIFIED EXCLUSIVELY TO: MR. PHIL MAGEE Closure error: 1/9,120

LOCATION: NE 1/4, SEC. 32, T.2N., R.6E., BRIGHTON TWP., LIVINGSTON CO.

SCALE: 1"=50' DATE: 1-4-16 BY: NDT JOB# 15-4044 SH. 1 of 2

I hereby certify that this survey was prepared by me, or under my direct supervision, and that all of the requirements of P.A. 132, 1970 have been complied with.



DRAFT

When recorded return to:
 B.F. Thompson, P.C. Brad F. Thompson, P.E., P.S.#23828

B.F. THOMPSON, P.C. Registered Professional Engineer & Land Surveyor

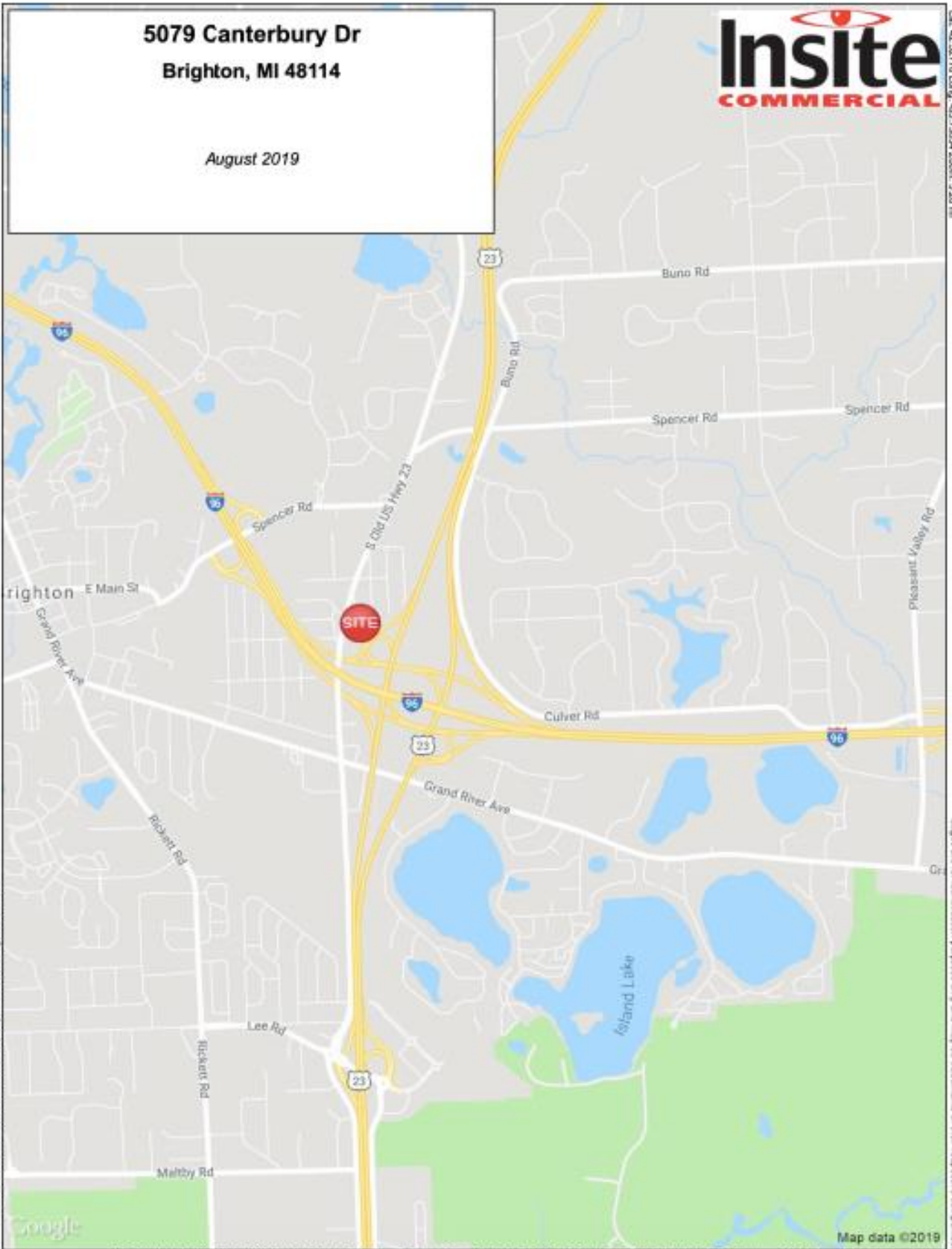
5079 Canterbury Dr
Brighton, MI 48114

August 2019



Lat: 42.50770 Long: -83.70024 Zoom: 3.28 mi

OFFICE | INDUSTRIAL | RETAIL | LAND | INVESTMENT | TENANT REPRESENTATION | CORPORATE SERVICES | PROPERTY MANAGEMENT | AVIATION SERVICES



©2019, SITES USA Inc., Chandler, AZ (480) 481-1112. All Rights Reserved

Logos are for identification purposes only and may be trademarks of their respective companies.

This map was produced using data from private and government sources deemed to be reliable. The information herein is provided without representation or warranty.

FULL PROFILE

2000-2010 Census, 2019 Estimates with 2024 Projections
 Calculated using Weighted Block Centroid from Block Groups



Lat/Lon: 42.5279/-83.758

RF1

5079 Canterbury Dr
 Brighton, MI 48114

1 mi radius 3 mi radius 5 mi radius

	1 mi radius	3 mi radius	5 mi radius	
POPULATION	2019 Estimated Population	3,606	27,780	48,703
	2024 Projected Population	3,752	28,712	50,251
	2010 Census Population	3,466	26,939	46,818
	2000 Census Population	3,293	25,261	44,060
	Projected Annual Growth 2019 to 2024	0.8%	0.7%	0.6%
	Historical Annual Growth 2000 to 2019	0.5%	0.5%	0.6%
HOUSEHOLDS	2019 Estimated Households	1,636	11,542	19,624
	2024 Projected Households	1,730	12,095	20,519
	2010 Census Households	1,509	10,704	18,059
	2000 Census Households	1,434	9,516	16,003
	Projected Annual Growth 2019 to 2024	1.2%	1.0%	0.9%
	Historical Annual Growth 2000 to 2019	0.7%	1.1%	1.2%
AGE	2019 Est. Population Under 10 Years	9.6%	9.4%	9.3%
	2019 Est. Population 10 to 19 Years	9.3%	11.9%	12.4%
	2019 Est. Population 20 to 29 Years	14.3%	11.7%	10.8%
	2019 Est. Population 30 to 44 Years	16.0%	15.3%	14.9%
	2019 Est. Population 45 to 59 Years	19.1%	23.5%	24.2%
	2019 Est. Population 60 to 74 Years	17.3%	19.2%	20.3%
	2019 Est. Population 75 Years or Over	14.5%	9.1%	8.0%
	2019 Est. Median Age	46.2	45.5	45.9
MARITAL STATUS & GENDER	2019 Est. Male Population	47.9%	49.6%	49.9%
	2019 Est. Female Population	52.1%	50.4%	50.1%
	2019 Est. Never Married	30.8%	25.9%	24.2%
	2019 Est. Now Married	45.8%	57.6%	60.4%
	2019 Est. Separated or Divorced	14.5%	11.2%	10.6%
	2019 Est. Widowed	8.9%	5.2%	4.8%
INCOME	2019 Est. HH Income \$200,000 or More	7.6%	12.3%	13.0%
	2019 Est. HH Income \$150,000 to \$199,999	7.3%	10.4%	11.9%
	2019 Est. HH Income \$100,000 to \$149,999	18.0%	21.7%	22.0%
	2019 Est. HH Income \$75,000 to \$99,999	12.0%	15.6%	14.9%
	2019 Est. HH Income \$50,000 to \$74,999	15.7%	14.9%	14.5%
	2019 Est. HH Income \$35,000 to \$49,999	19.2%	11.3%	10.1%
	2019 Est. HH Income \$25,000 to \$34,999	10.6%	5.9%	5.3%
	2019 Est. HH Income \$15,000 to \$24,999	6.2%	4.6%	4.9%
	2019 Est. HH Income Under \$15,000	3.5%	3.5%	3.4%
	2019 Est. Average Household Income	\$101,731	\$117,810	\$124,417
	2019 Est. Median Household Income	\$71,993	\$95,311	\$98,568
	2019 Est. Per Capita Income	\$46,343	\$49,029	\$50,207
	2019 Est. Total Businesses	545	1,887	2,592
2019 Est. Total Employees	4,125	17,787	24,811	

This report was produced using data from private and government sources deemed to be reliable. The information herein is provided without representation or warranty.

FULL PROFILE

2000-2010 Census, 2019 Estimates with 2024 Projections

Calculated using Weighted Block Centroid from Block Groups



Lat/Lon: 42.5279/-83.758

RF1

5079 Canterbury Dr

Brighton, MI 48114

1 mi radius 3 mi radius 5 mi radius

		1 mi radius	3 mi radius	5 mi radius
RACE	2019 Est. White	93.9%	95.6%	95.6%
	2019 Est. Black	1.2%	0.7%	0.8%
	2019 Est. Asian or Pacific Islander	1.8%	1.2%	1.2%
	2019 Est. American Indian or Alaska Native	0.5%	0.4%	0.3%
	2019 Est. Other Races	2.6%	2.1%	2.0%
HISPANIC	2019 Est. Hispanic Population	125	821	1,354
	2019 Est. Hispanic Population	3.5%	3.0%	2.8%
	2024 Proj. Hispanic Population	3.7%	3.2%	3.0%
	2010 Hispanic Population	2.5%	2.0%	1.9%
EDUCATION (Adults 25 or Older)	2019 Est. Adult Population (25 Years or Over)	2,684	20,204	35,344
	2019 Est. Elementary (Grade Level 0 to 8)	0.8%	0.6%	0.5%
	2019 Est. Some High School (Grade Level 9 to 11)	6.6%	3.5%	3.1%
	2019 Est. High School Graduate	24.7%	21.9%	21.7%
	2019 Est. Some College	24.6%	20.3%	20.7%
	2019 Est. Associate Degree Only	7.9%	9.3%	9.1%
	2019 Est. Bachelor Degree Only	20.1%	28.3%	28.7%
	2019 Est. Graduate Degree	15.3%	16.1%	16.2%
HOUSING	2019 Est. Total Housing Units	1,694	11,955	20,370
	2019 Est. Owner-Occupied	58.9%	76.6%	81.8%
	2019 Est. Renter-Occupied	37.7%	19.9%	14.5%
	2019 Est. Vacant Housing	3.5%	3.5%	3.7%
HOMES BUILT BY YEAR	2019 Homes Built 2010 or later	1.6%	2.2%	3.7%
	2019 Homes Built 2000 to 2009	10.0%	14.2%	13.2%
	2019 Homes Built 1990 to 1999	18.5%	23.5%	24.8%
	2019 Homes Built 1980 to 1989	10.6%	11.8%	12.7%
	2019 Homes Built 1970 to 1979	27.4%	21.0%	20.7%
	2019 Homes Built 1960 to 1969	10.2%	8.3%	7.5%
	2019 Homes Built 1950 to 1959	9.3%	7.9%	6.5%
	2019 Homes Built Before 1949	9.0%	7.7%	7.2%
HOME VALUES	2019 Home Value \$1,000,000 or More	0.7%	0.8%	0.7%
	2019 Home Value \$500,000 to \$999,999	7.3%	9.1%	10.1%
	2019 Home Value \$400,000 to \$499,999	11.2%	8.1%	10.0%
	2019 Home Value \$300,000 to \$399,999	18.3%	22.2%	23.0%
	2019 Home Value \$200,000 to \$299,999	28.4%	36.7%	36.7%
	2019 Home Value \$150,000 to \$199,999	20.4%	17.5%	15.2%
	2019 Home Value \$100,000 to \$149,999	12.1%	6.8%	5.5%
	2019 Home Value \$50,000 to \$99,999	4.6%	2.8%	2.3%
	2019 Home Value \$25,000 to \$49,999	1.9%	1.0%	1.1%
	2019 Home Value Under \$25,000	3.0%	2.4%	3.5%
	2019 Median Home Value	\$246,930	\$275,307	\$277,518
	2019 Median Rent	\$862	\$939	\$962

This report was produced using data from public sources deemed to be reliable. The information herein is provided without representation or warranty.

FULL PROFILE

2000-2010 Census, 2019 Estimates with 2024 Projections

Calculated using Weighted Block Centroid from Block Groups



Lat/Lon: 42.5279/-83.758

RF1

5079 Canterbury Dr

Brighton, MI 48114

		1 mi radius	3 mi radius	5 mi radius
LABOR FORCE	2019 Est. Labor Population Age 16 Years or Over	3,059	23,176	40,506
	2019 Est. Civilian Employed	62.9%	64.3%	63.6%
	2019 Est. Civilian Unemployed	1.3%	1.7%	1.8%
	2019 Est. in Armed Forces	-	-	-
	2019 Est. not in Labor Force	35.8%	33.9%	34.5%
	2019 Labor Force Males	47.5%	49.2%	49.5%
	2019 Labor Force Females	52.5%	50.8%	50.5%
OCCUPATION	2019 Occupation: Population Age 16 Years or Over	1,925	14,912	25,781
	2019 Mgmt, Business, & Financial Operations	18.1%	21.0%	22.3%
	2019 Professional, Related	23.8%	26.6%	25.9%
	2019 Service	19.2%	15.6%	15.0%
	2019 Sales, Office	23.2%	21.4%	22.3%
	2019 Farming, Fishing, Forestry	-	-	-
	2019 Construction, Extraction, Maintenance	7.0%	7.2%	6.9%
	2019 Production, Transport, Material Moving	8.7%	8.2%	7.6%
	2019 White Collar Workers	65.0%	69.0%	70.5%
	2019 Blue Collar Workers	35.0%	31.0%	29.5%
TRANSPORTATION TO WORK	2019 Drive to Work Alone	85.7%	87.4%	87.2%
	2019 Drive to Work in Carpool	9.9%	6.0%	5.9%
	2019 Travel to Work by Public Transportation	0.1%	0.1%	0.3%
	2019 Drive to Work on Motorcycle	-	-	-
	2019 Walk or Bicycle to Work	1.0%	1.1%	0.9%
	2019 Other Means	0.2%	0.4%	0.3%
	2019 Work at Home	3.1%	5.0%	5.4%
TRAVEL TIME	2019 Travel to Work in 14 Minutes or Less	29.3%	27.3%	25.3%
	2019 Travel to Work in 15 to 29 Minutes	25.1%	22.8%	23.4%
	2019 Travel to Work in 30 to 59 Minutes	36.2%	38.7%	38.9%
	2019 Travel to Work in 60 Minutes or More	11.1%	13.1%	13.0%
	2019 Average Travel Time to Work	26.5	29.4	29.7
CONSUMER EXPENDITURE	2019 Est. Total Household Expenditure	\$115.3 M	\$913.65 M	\$1.61 B
	2019 Est. Apparel	\$4.04 M	\$32.44 M	\$57.4 M
	2019 Est. Contributions, Gifts	\$6.67 M	\$55.08 M	\$97.61 M
	2019 Est. Education, Reading	\$3.64 M	\$31.23 M	\$55.76 M
	2019 Est. Entertainment	\$6.52 M	\$52.86 M	\$93.73 M
	2019 Est. Food, Beverages, Tobacco	\$17.62 M	\$137.78 M	\$242.98 M
	2019 Est. Furnishings, Equipment	\$4.05 M	\$32.79 M	\$58.13 M
	2019 Est. Health Care, Insurance	\$10.66 M	\$83.25 M	\$147 M
	2019 Est. Household Operations, Shelter, Utilities	\$37.34 M	\$291.99 M	\$514.86 M
	2019 Est. Miscellaneous Expenses	\$2.2 M	\$17.45 M	\$30.85 M
	2019 Est. Personal Care	\$1.55 M	\$12.28 M	\$21.7 M
2019 Est. Transportation	\$21.01 M	\$166.49 M	\$294.2 M	

This report was produced using data from private and government sources deemed to be reliable. The information herein is provided without representation or warranty.

5079 Canterbury Dr
Brighton, MI 48114

November 2019

