

3550

NORTH FIRST STREET, SAN JOSE, CA



±76,690 SF WITH EXPANSION AVAILABLE

CARRICK YOUNG | 408.836.2878 | carrick.young@cushwake.com | LIC #02018252
KELLY YODER | 408.615.3427 | kelly.yoder@cushwake.com | LIC #01821117
TODD BEATTY | 408.615.3418 | todd.beatty@cushwake.com | LIC #00976940
STEVE HORTON | 408.615.3412 | steve.horton@cushwake.com | LIC #01127340



PROJECT HIGHLIGHTS

3550
N FIRST STREET

237

880

101

TASMAN LIGHT RAIL STATION
BAYPOINTE LIGHT RAIL STATION

W TASMAN DR

MCCARTHY BLVD

MONTAGUE EXPY

N FIRST ST

W TRIMBLE RD

JUNCTION AVE

ZANKER RD

3550 N. FIRST STREET

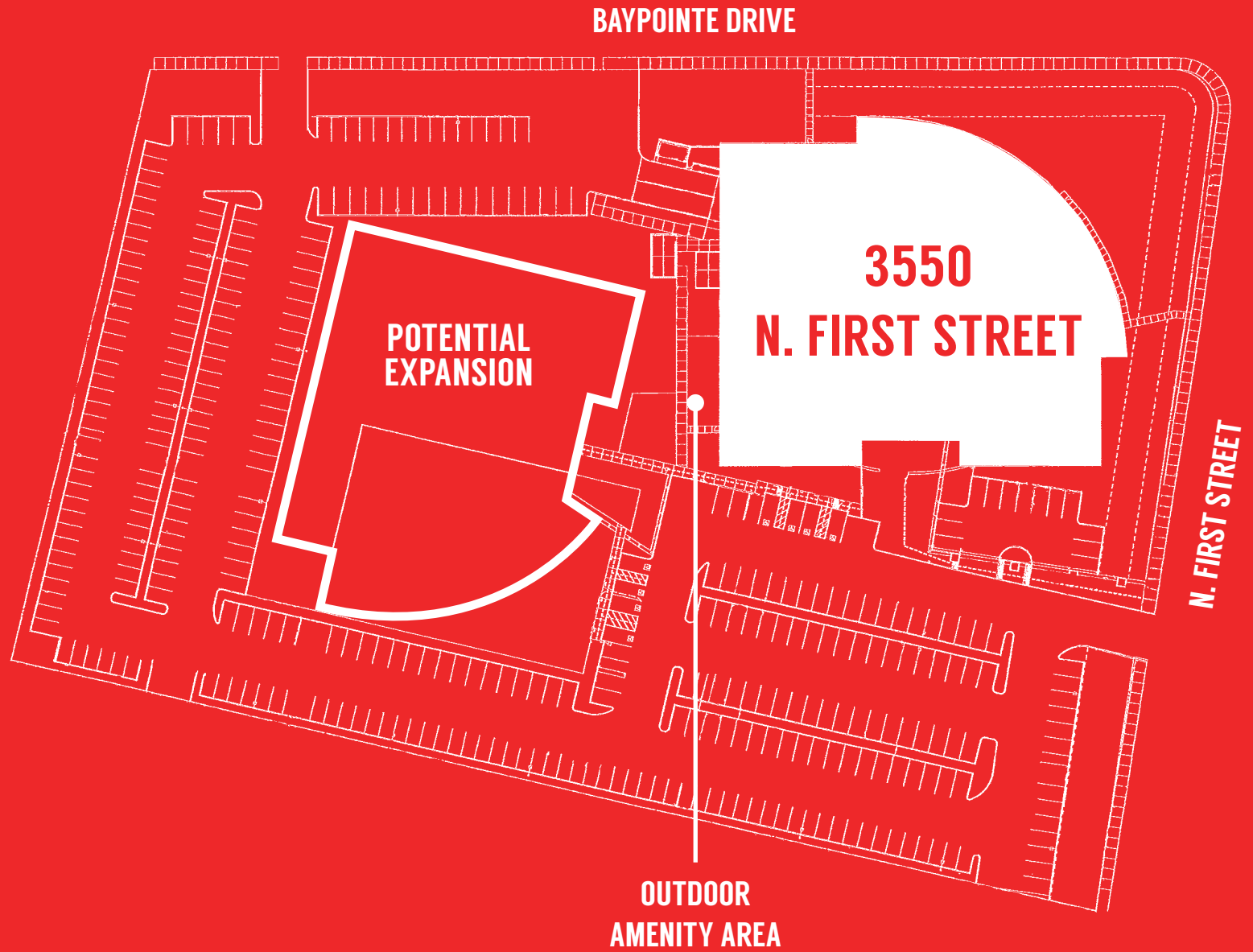
±76,690 SF with Expansion Potential

- Two-Story Building with a Dramatic Two-Story Lobby
- Expansion Available on Adjacent Land
- 2000 Amps @ 480/277 3 Phase
- ±4.6/1,000 Parking
- Ground Floor Clear Height
 - ±13'4" Slab to Truss
 - ±16'6" Slab to Deck
- Dock & Grade Level Loading
- AT&T Fiber
- Dual EV Charging Station
- 300 kw Back Up Generator
- Less than One Mile to @First Retail
- Across the Street from Tasman Light Rail Station

*Subject to City Approvals



SITE PLAN

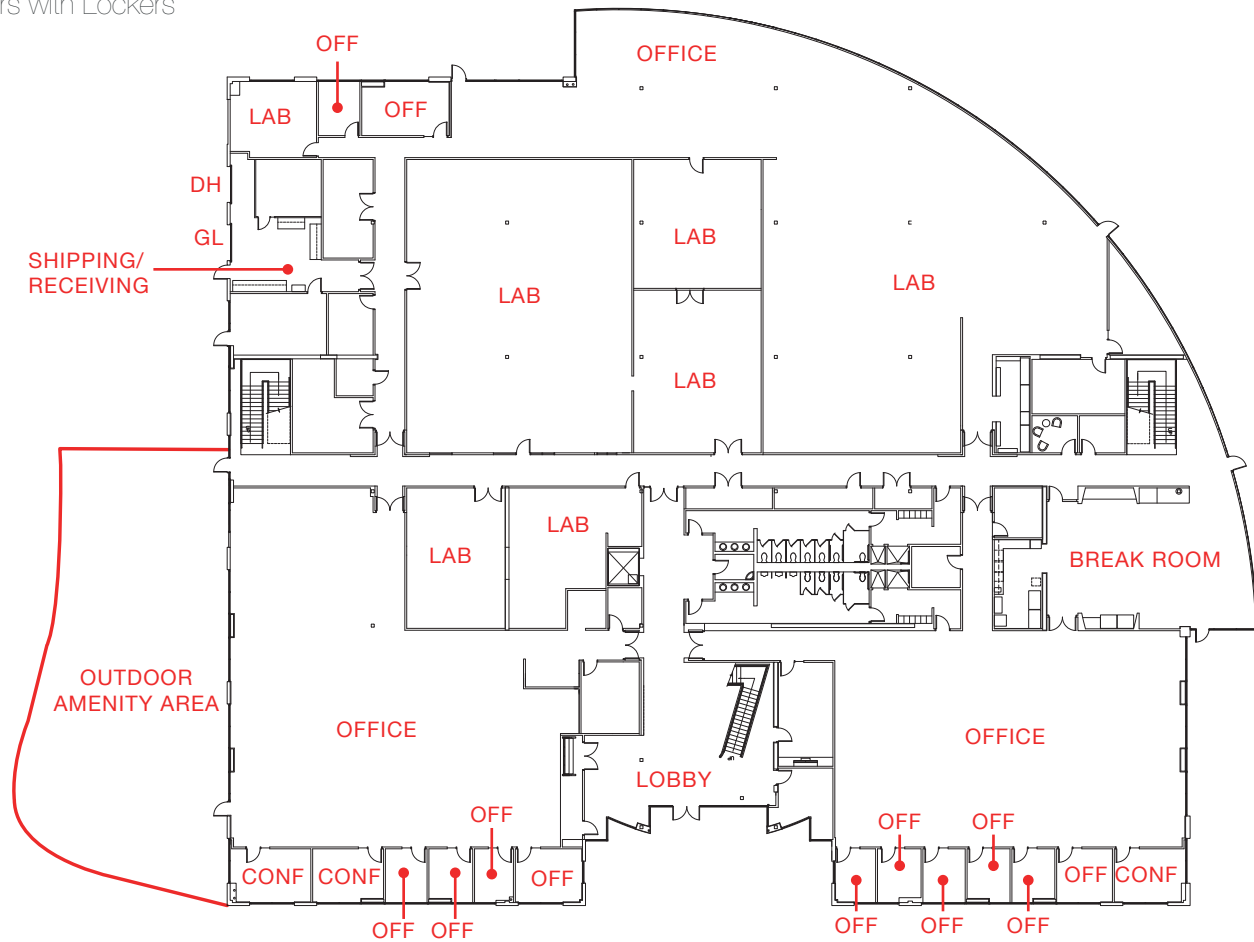


3570 NORTH FIRST STREET

FIRST FLOOR

±76,690 SF AS-BUILT

- Open Office Areas
- 3 Conference Rooms
- 12 Offices
- 1 Dock Loading Door
- 1 Grade Level Door
- Break Room
- Showers with Lockers

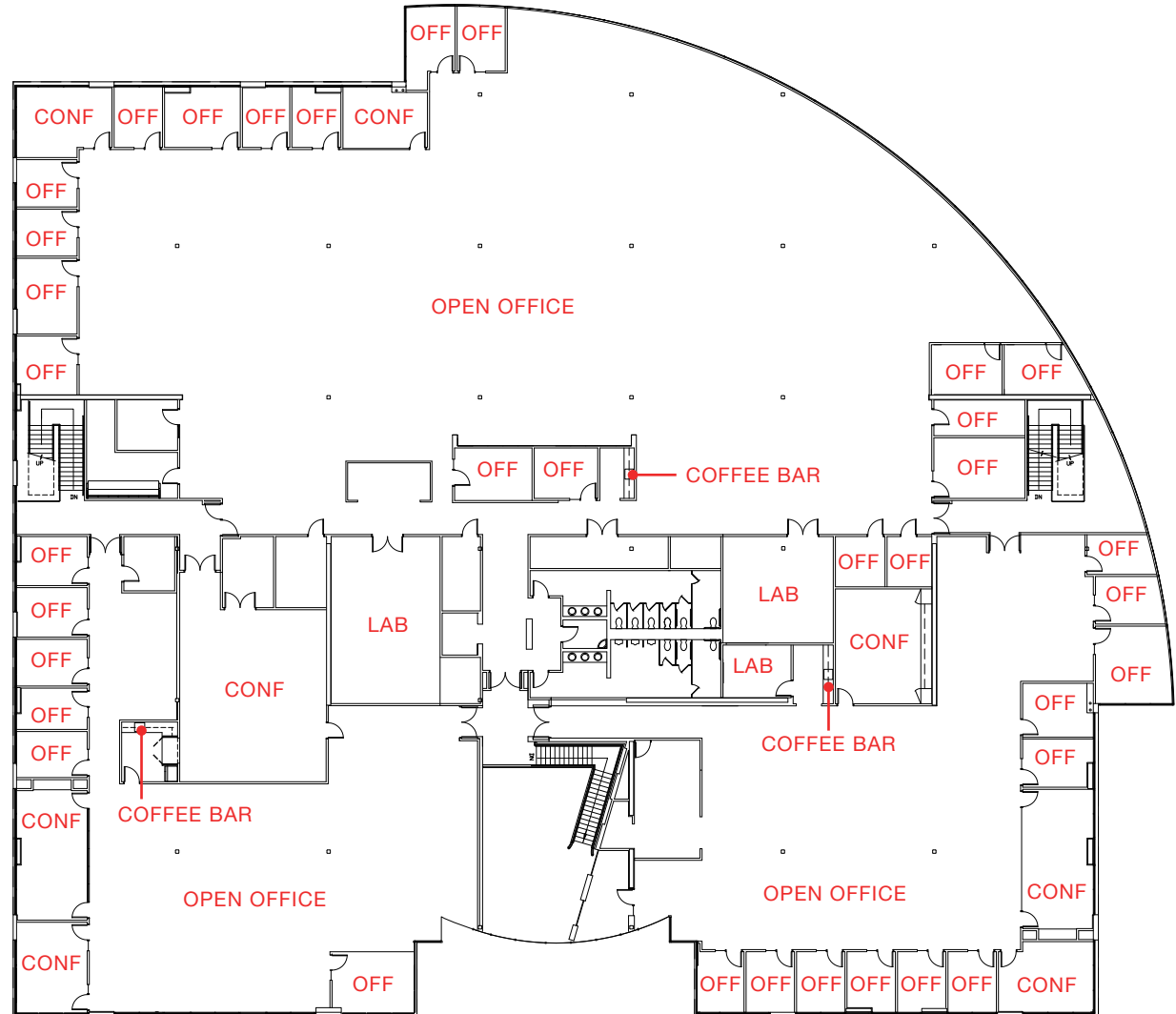


N. FIRST STREET

SECOND FLOOR

±76,690 SF AS-BUILT PLAN

- Open Office Area
- 6 Conference Rooms
- 33 Offices



LA FAYETTE

FIRST

- Target
- Starbucks
- The Coffee Bean
- Panera Bread
- Chipotle Mexican Grill
- Five Guys
- Premier Pizza
- Fish's Wild
- Chick-fil-A
- Rok Steakhouse & Grill
- SAJJ Mediterranean

- La Catalana
- Subway
- Eat Viet
- Mina's Korean
- BBQ
- Sendo Sushi
- Round Table Pizza
- Halan Gyro Express
- Von Chicken
- Extreme Pita

MCCARTHY RANCH

- In-N-Out Burger
- Romano's Macaroni Grill
- Banana Leaf
- The Green Barn
- McDonald's
- Taco Bell
- Starbucks
- Happi House Teriyaki
- DishDash
- On The Border
- Black Angus Steakhouse

MILPITAS TOWN CENTER

- IHOP
- Yogurtland
- Peet's Coffee & Tea
- El Torito
- Red Lobster
- Panda Express
- Starbucks
- Wingstop
- Giorgio's Italian
- BevMo

Embassy Suites
Extended Stay

Faz Restaurant
Capriotti's Sandwiches

SERRA CENTER

- Paris Baguette
- Starbucks
- Chili's Bar & Grill
- Black Bear Diner
- Lee's Sandwiches
- Burger King
- Foster's Freeze
- KFC

- Taco Bell
- Zahir's Bistro
- Combay Chaat House
- Milan Indian

Courtyard Marriott
Hyatt House

- Samsung Cafe
- Honeyberry
- Peet's Coffee & Tea

Levi's Stadium
Bourbon Steak

MERCADO

- In-N-Out Burger
- AMC Mercado 20
- Starbucks
- SmokeEaters
- Panda Express
- Tomatina
- Subway
- TJ Maxx & Homegoods
- Walmart Neighborhood Market
- Krispy Kreme
- Jamba Juice

Starbucks

The Great Mall

- Sheraton
- Lazio Bar Bistro

Sonesta Silicon
Valley Hotel

- Hobee's
- Go Fish Poke Bar
- Subway
- Starbucks
- Falafels N More
- Premier Pizza

3550
N FIRST STREET

680

237

880

101

LA FAYETTE ST

ZANKER RD

E TASMAN DR

MONTAGUE EXPY

N FIRST ST

NEIGHBORHOOD

101

237

MONTAGUE EXPRESSWAY

LAFAYETTE STREET

NORTH FIRST STREET

E. TASMAN DRIVE

ZANKER ROAD

3550
N FIRST STREET

VERB SURGICAL

flex

Polycom

Hewlett Packard Enterprise

DELL

Google

CITRIX

Levi's STADIUM

Abbott

first

CISCO

Micron

RIVERMARK

maxim integrated

CISCO

Apple

SAMSUNG

f5

huynix

VIA

Canon

ABB

SANMINA

NIO

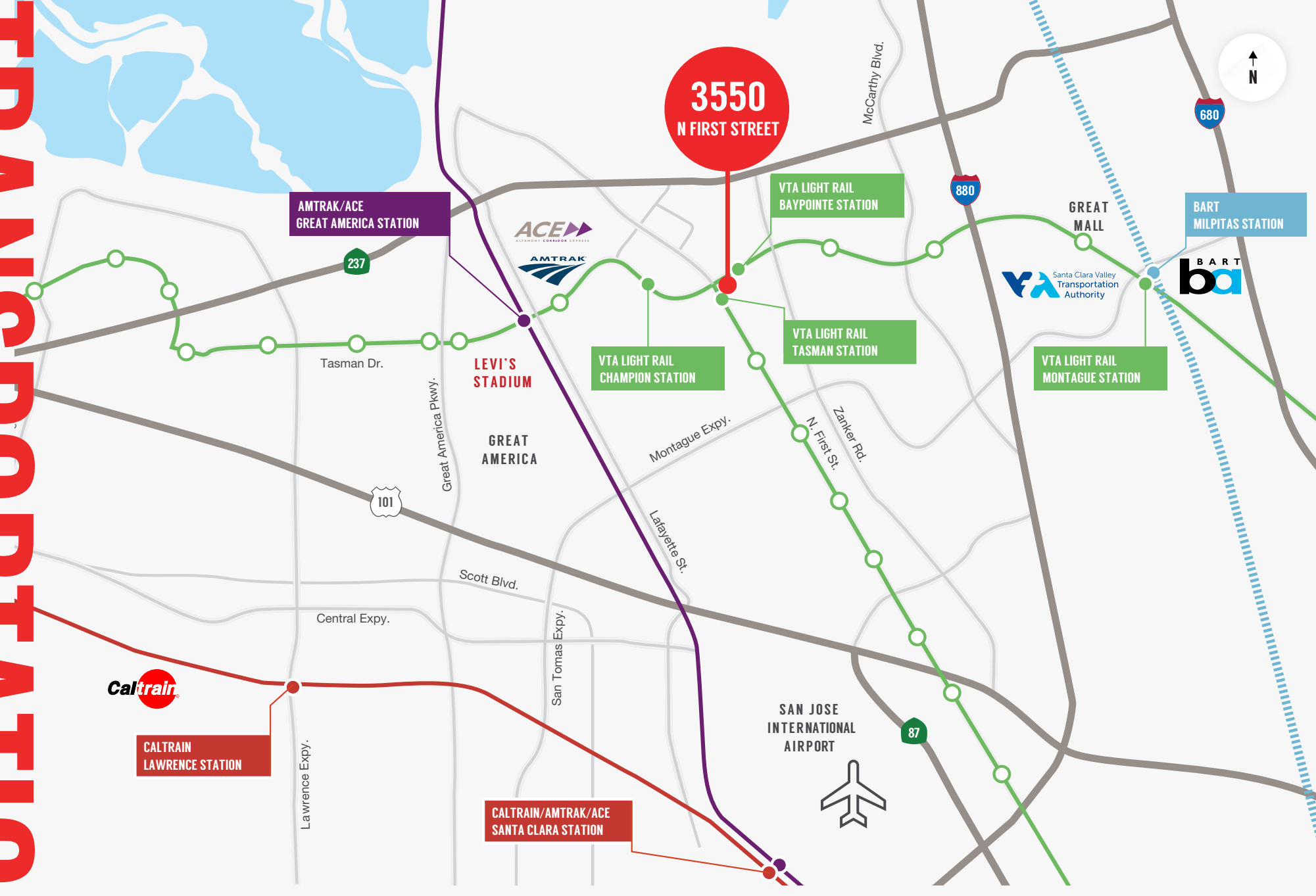
BROADCOM

Hewlett Packard Enterprise

CISCO

CORPORATE CAMPUS RETAIL

TRANSPORTATION



05 MINUTE WALK TO TASMAN LIGHT RAIL

20 MINUTES ON LIGHT RAIL TO BART

CONTACT US

3550 NORTH FIRST STREET
±76,690 SF WITH EXPANSION AVAILABLE



CARRICK YOUNG | 408.836.2878 | carrick.young@cushwake.com | LIC #02018252
KELLY YODER | 408.615.3427 | kelly.yoder@cushwake.com | LIC #01821117
TODD BEATTY | 408.615.3418 | todd.beatty@cushwake.com | LIC #00976940
STEVE HORTON | 408.615.3412 | steve.horton@cushwake.com | LIC #01127340