



FOR LEASE | OFFICE

THE COMMONS 6000

6000 GREENWOOD PLAZA BLVD
GREENWOOD VILLAGE, CO 80111

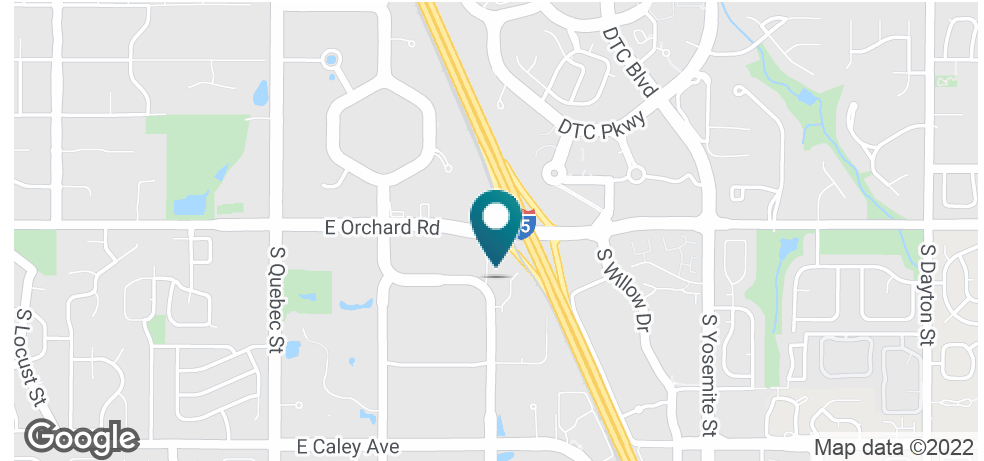
BILL WOODWARD

720.274.8313
bwoodward@skye-cre.com



FOR LEASE | OFFICE

THE COMMONS 6000



OFFERING SUMMARY

| | |
|----------------|--------------------------------------|
| Available SF: | 2,308 - 4,503 SF |
| Lease Rate: | \$18.00 - 20.00 SF/yr (Full Service) |
| Year Built: | 1980 |
| Building Size: | 50,599 SF |
| Zoning: | TC PUD |
| Market: | Denver |
| Submarket: | Greenwood Village |

PROPERTY OVERVIEW

Class B office space available for lease

PROPERTY HIGHLIGHTS

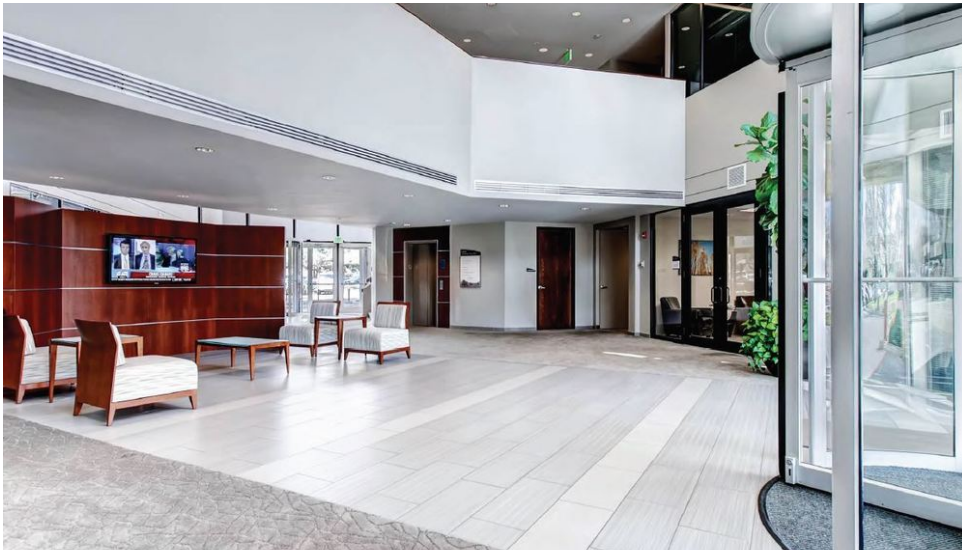
- Convenient access to I-25 and DTC
- Nestled between Orchard and Arapahoe Light Rail Stations
- Flexible lease terms with move-in ready spaces
- Parking Ratio: 4.0/1,000 RSF
- Streams, waterfalls, ponds, and flower beds, scattered within complex
- Property offers janitorial services, landscaping, and flexible floor plans
- The layout is office intensive with upgraded finishes

BILL WOODWARD
720.274.8313
bwoodward@skye-cre.com

6000 GREENWOOD PLAZA BLVD | GREENWOOD VILLAGE, CO 80111

FOR LEASE | OFFICE

THE COMMONS 6000

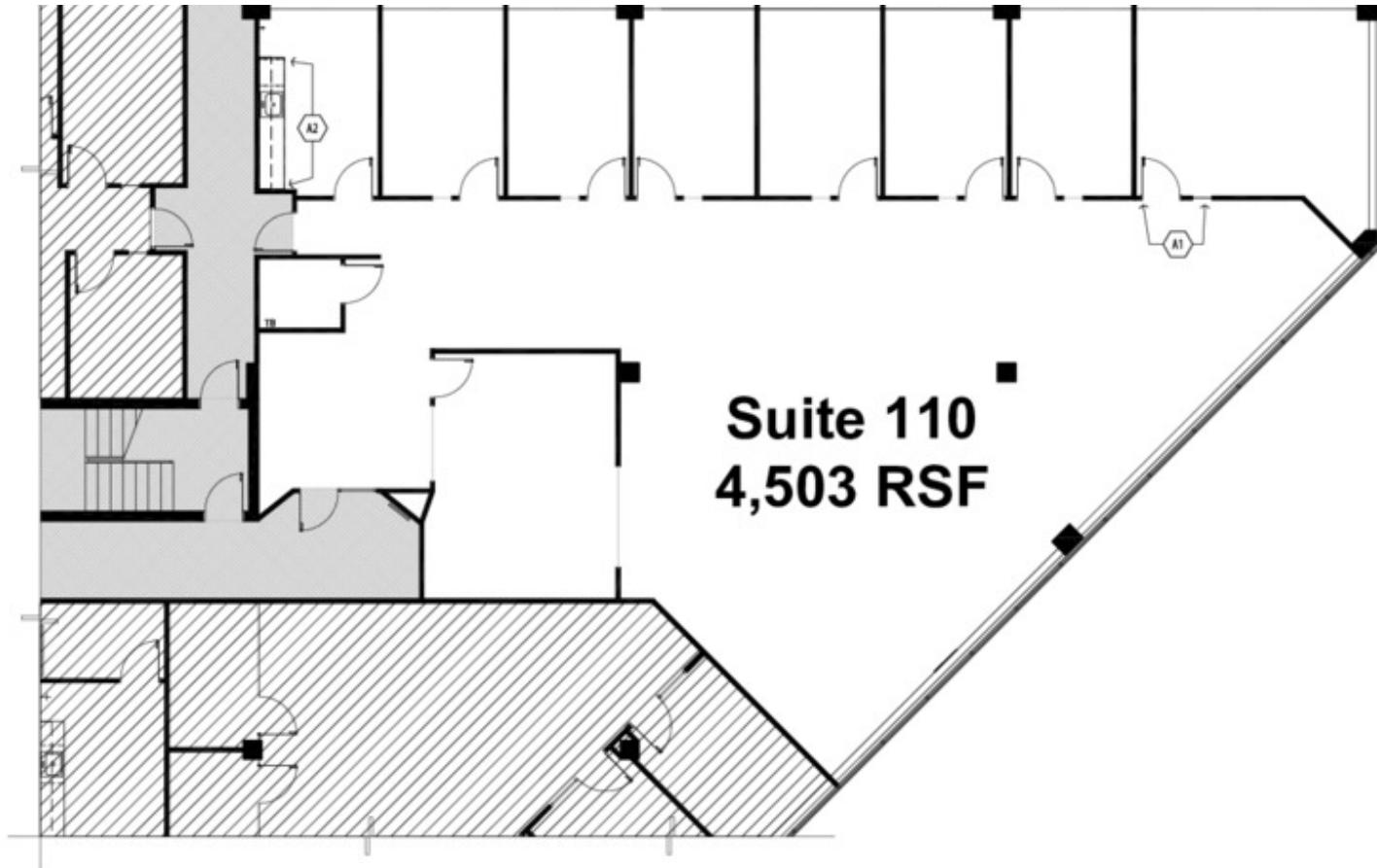


BILL WOODWARD
720.274.8313
bwoodward@skye-cre.com

6000 GREENWOOD PLAZA BLVD | GREENWOOD VILLAGE, CO 80111

FOR LEASE | OFFICE

THE COMMONS 6000



BILL WOODWARD
720.274.8313
bwoodward@skye-cre.com

6000 GREENWOOD PLAZA BLVD | GREENWOOD VILLAGE, CO 80111

FOR LEASE | OFFICE

THE COMMONS 6000



Suite 130
3,147 SF



BILL WOODWARD
720.274.8313
bwoodward@skye-cre.com

6000 GREENWOOD PLAZA BLVD | GREENWOOD VILLAGE, CO 80111

FOR LEASE | OFFICE

THE COMMONS 6000



BILL WOODWARD
720.274.8313
bwoodward@skye-cre.com

6000 GREENWOOD PLAZA BLVD | GREENWOOD VILLAGE, CO 80111