

AVAILABLE IMMEDIATELY

FOXBORO PLAZA

10 Commercial Street, Foxboro, Massachusetts 02035

1,100 SF Pad Site & 20,000 SF End Cap Opportunity



Site Details

- 1,100 SF Pad Site
- 20,000 End Cap - former gym
- Located just 2 minutes (0.6 miles) from Route 95
- 2 minutes (0.6 mile) via MA-140 N / Commercial Street
- Pylon right on Route 140
- Traffic Count: 17,766 cars per day

Demographics

	1 Mile	3 Mile	5 Mile
Population	3,691	29,320	68,035
Households	1,623	11,345	24,508
Median HH Income	\$83,326	\$104,263	\$115,549
Average HH Income	\$112,450	\$134,159	\$147,579

END CAP SPACE



PAD SITE SPACE



PYLON SIGNAGE



Neighboring Tenants Include...



Foxboro Plaza - Site Plan

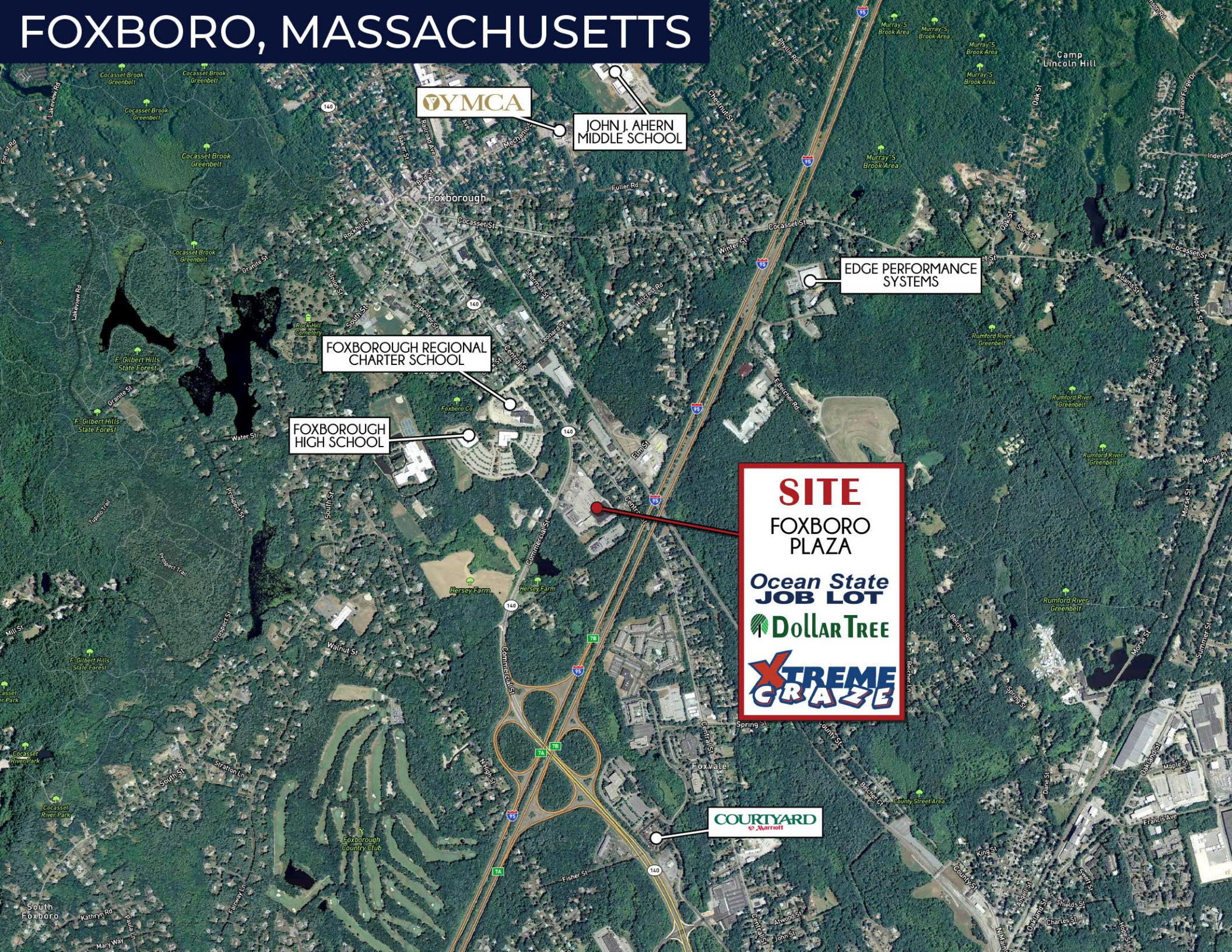


SITE PLAN KEY

01	Hobby Quarters (RC Hover)	3,749 SF
02	Hop & Grapes Variety	1,600 SF
03	Quest Diagnostic	1,945 SF
04	T&C Nails and Spa	2,481 SF
05	Available	20,000 SF
07	Personal Best Karate	4,480 SF
08	Dollar Tree	9,146 SF
09	Elite Dance	4,000 SF
10	Xtreme Craze	24,950 SF
11	Available	1,100 SF
12	Dunkin Donuts	2,025 SF
13	Papa Gino's	5,245 SF
99	Ocean State Job Lot	40,560 SF
TOTAL		121,281 SF

***Not to Scale**

FOXBORO, MASSACHUSETTS



YIMCA

**JOHN J. AHERN
MIDDLE SCHOOL**

**EDGE PERFORMANCE
SYSTEMS**

**FOXBOROUGH REGIONAL
CHARTER SCHOOL**

FOXBOROUGH HIGH SCHOOL

SITE
**FOXBORO
PLAZA**
**Ocean State
JOB LOT**
DOLLAR TREE
**XTREME
GRAZE**

**COURTYARD
by Marriott**

FOXBORO PLAZA

10 Commercial Street, Foxboro, Massachusetts 02035

Contact Us

MARY POWERS
617.369.5915
mpowers@dartco.com

LESLIE COTTER
617.369.5917
lcotter@dartco.com



351 NEWBURY STREET, BOSTON, MASSACHUSETTS 02115 • 617.262.6620 • DARTCO.COM