

*For sale or lease*

630 Plantation Street

**Worcester, MA**

---

**54,100 SF, SINGLE-STORY MEDICAL OFFICE BUILDING IN WORCESTER, MA**

---



# 630 Plantation Street

## Worcester, MA

630 Plantation Street is a 54,100 SF, single-story medical office building in Worcester, MA. The property features stunning views of Lake Quinsigamond, offers direct access to I-290 and has strong redevelopment potential. The property is less than 1 mile from UMass Medical Center and UMass Medicine Science Park as well as an abundance of amenities, including restaurants, retail, hotels and health clubs.



### BUILDING SPECS



**Buildings** Three



**Parking** 5.8 / 1,000 SF



**Year Built** Built in 1970



**Elevators** One hydraulic elevator (main building)



**Size** 51,970 RSF (main building)  
2,130 RSF (annex building)  
7,210 RSF (SCOPE building)



**HVAC** Roof-top package units and split systems (main building)



**Floors** Two (main building)  
One (annex building)  
One (SCOPE building)



**Electrical** 1,600-amp, 3-phase, 4-wire service (main building)



**Land Area** 4.99 acres



**Utilities**

*Electric* National Grid  
*Gas* Columbia Gas Company  
*Water* City of Worcester  
*Sewer* City of Worcester



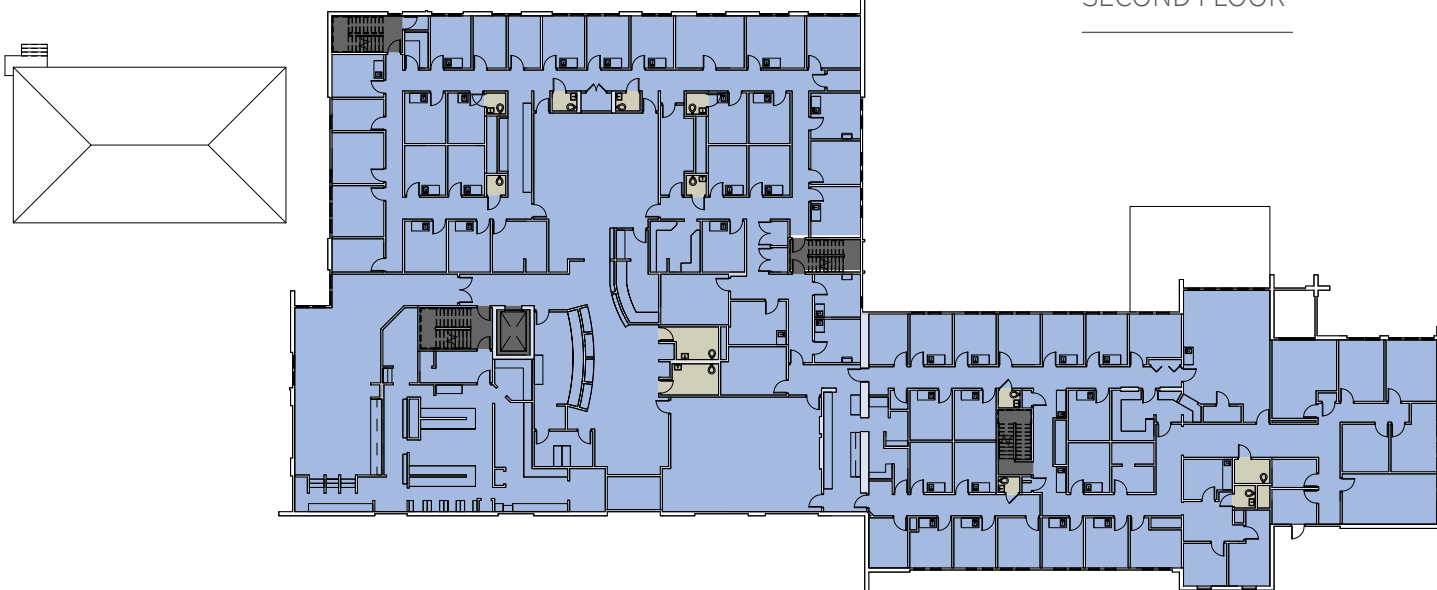
**Zoning** Commercial and industrial

FLOOR PLANS

FIRST FLOOR



SECOND FLOOR



630 Plantation Street  
Worcester, MA



630 Plantation Street  
Worcester, MA



**For more information, please contact:**

Phil DeSimone  
+1 617 531 4188  
Philip.DeSimone@am.jll.com

Andrew Sherman  
+1 617 531 4147  
Andrew.Sherman@am.jll.com

Jim Umphrey  
+1 508 635 6790  
Umphrey@Kelleher-Sadowsky.com

William Kelleher  
+1 508 635 6785  
WKelleher@Kelleher-Sadowsky.com

