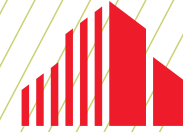


FOR LEASE

2,941 SF AVAILABLE



**CUSHMAN &
WAKEFIELD**



1754 WASHINGTON AVENUE

STILLWATER, MN

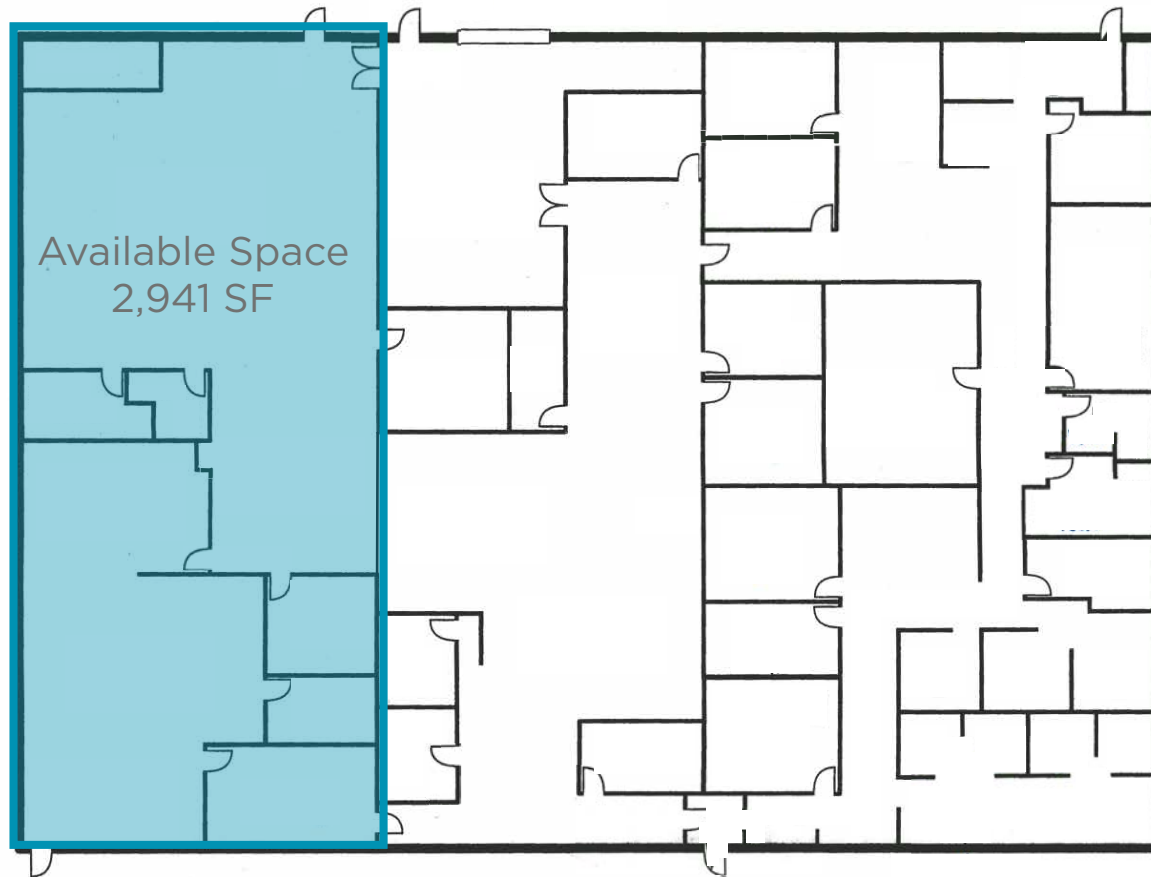
1754 Washington Aveune | Stillwater, MN

PROPERTY HIGHLIGHTS

| | |
|-------------------|--|
| BUILDING SIZE | 19,250 SF |
| AVAILABLE SF | 2,941 SF |
| YEAR BUILT | 1991 |
| ROOF AGE | 2013 |
| DOCKS | 4 |
| STORIES | One (1) story building |
| PARKING | 6.34/1,000; 105 surface stalls |
| LEASE RATES | \$10.00 PSF (Net) |
| TAX & OPEX | \$6.71 |
| BUILDING FEATURES | Dedicated turn lane, building signage, signalized intersection |

Monument signage
available for the vacancy

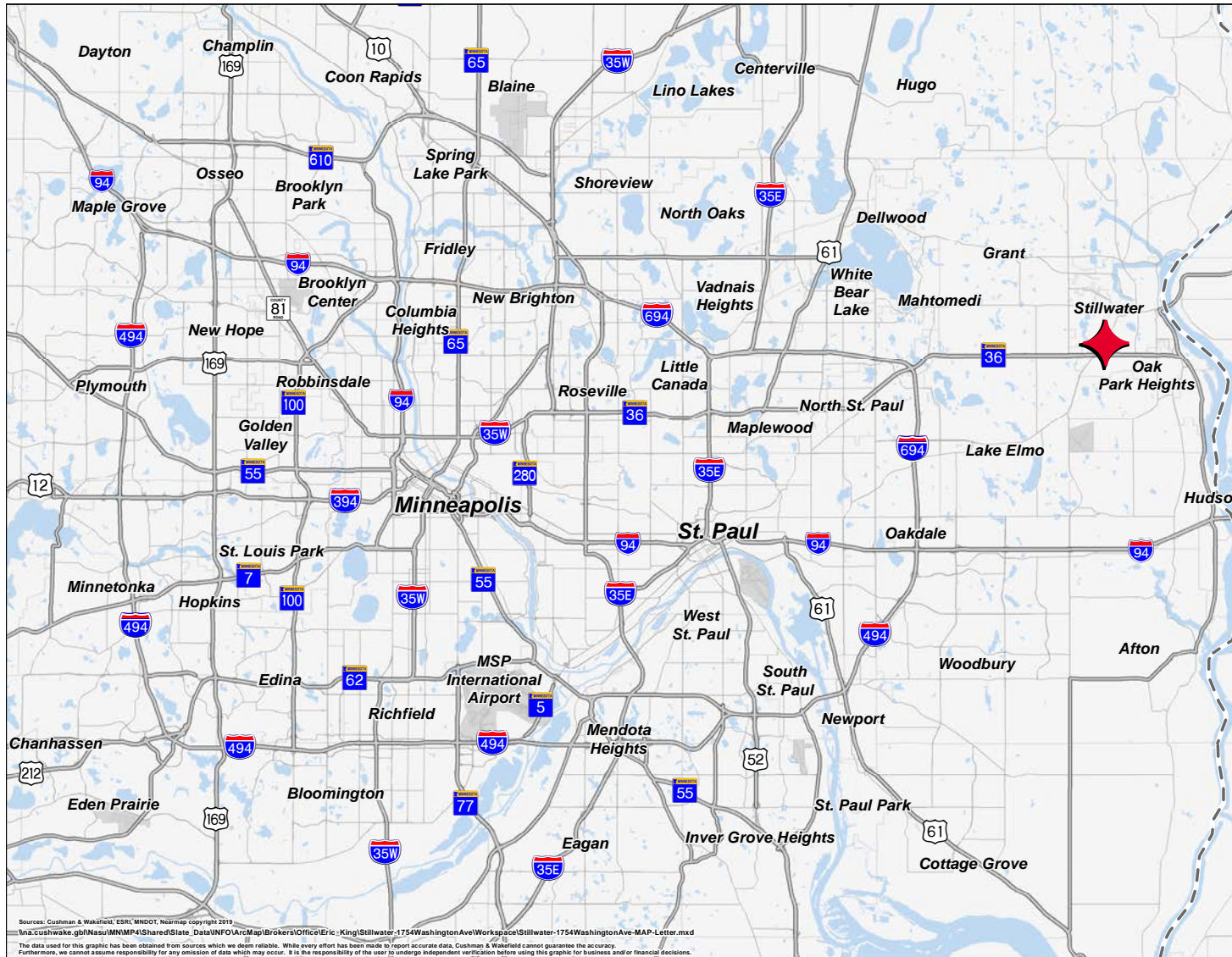




FLOOR
PLAN



AERIAL MAP



LOCATION MAP

CONTACT INFORMATION

ERIC KING

Senior Director
eric.king@cushwake.com
+1 651 734 2385

BRETT DRAXLER

Associate
brett.draxler@cushwake.com
+1 612 347 9313

1400 IDS Center | 80 South 8th Street
Minneapolis, MN 55402
cushmanwakefield.com

