

WAREHOUSE SPACE FOR LEASE 2012 EISENHOWER AVE.

ALEXANDRIA, VIRGINIA

TARTAN
PROPERTIES



OFFERING SUMMARY

Lease Rate:	\$13.50/SF
Unit Size:	3,197 SF
Ceiling Height:	20 ft.
Term:	1-4 years
Available:	Immediately

PROPERTY OVERVIEW

Now available for lease: rare warehouse space inside I-495/Capital Beltway between Telegraph Road and Route 1 exits. Most ideal for storage related uses and local deliveries.

PROPERTY HIGHLIGHTS

- One warehouse bay available
- Loading dock access
- 20' ceiling height, 10' door height
- All utilities included for general storage. No additional charges
- 1-4 year lease term available
- Heating only; no A/C
- No restrooms
- 2 reserved parking spaces, additional spaces available
- **Available immediately**

Leasing by:

MIKE PORTERFIELD

703.836.6555 x101 | mike@tartanproperties.com



www.tartanproperties.com

WAREHOUSE SPACE FOR LEASE 2012 EISENHOWER AVE.

ALEXANDRIA, VIRGINIA

TARTAN
PROPERTIES



Leasing by:

MIKE PORTERFIELD

703.836.6555 x101 | mike@tartanproperties.com



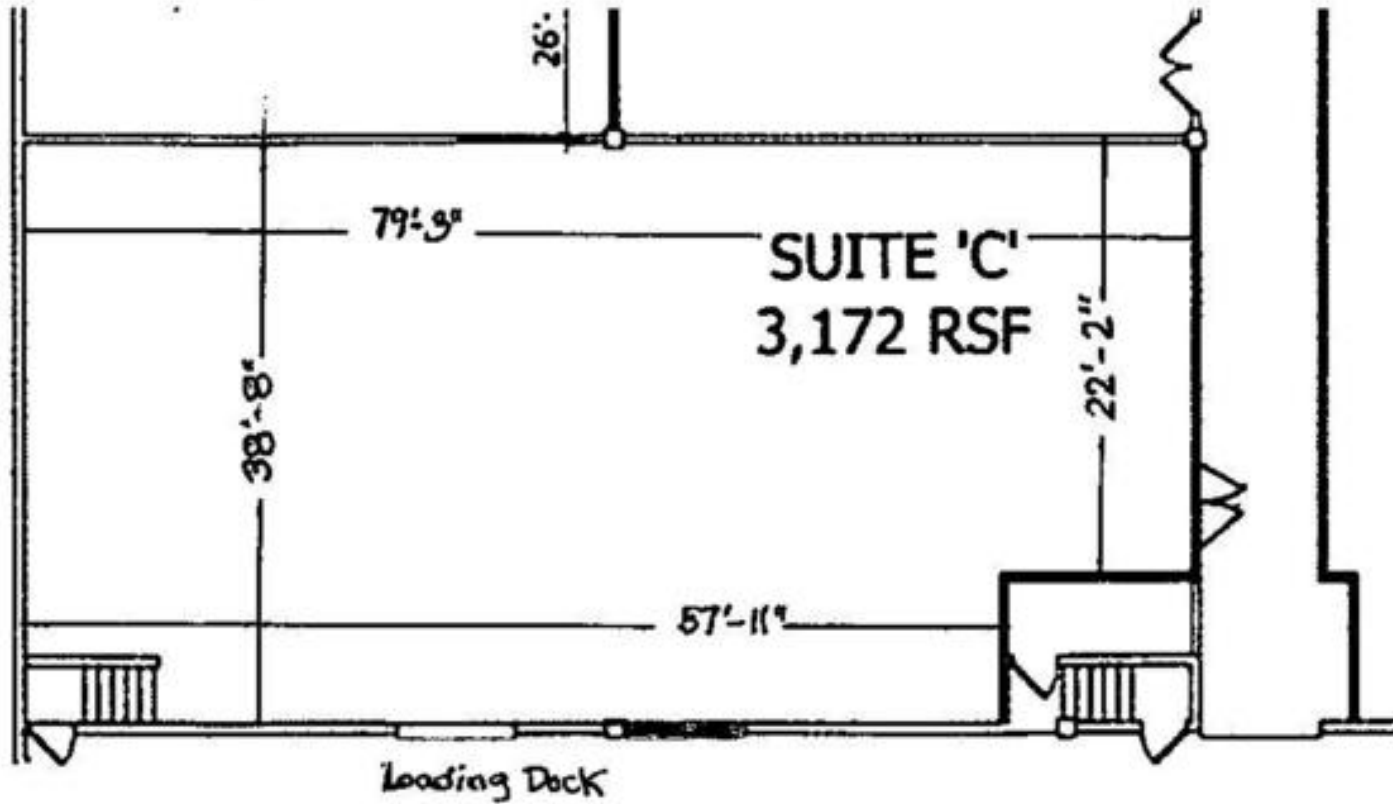
www.tartanproperties.com

WAREHOUSE SPACE FOR LEASE

2012 EISENHOWER AVE.

ALEXANDRIA, VIRGINIA

TARTAN
PROPERTIES



Leasing by:

MIKE PORTERFIELD

703.836.6555 x101 | mike@tartanproperties.com

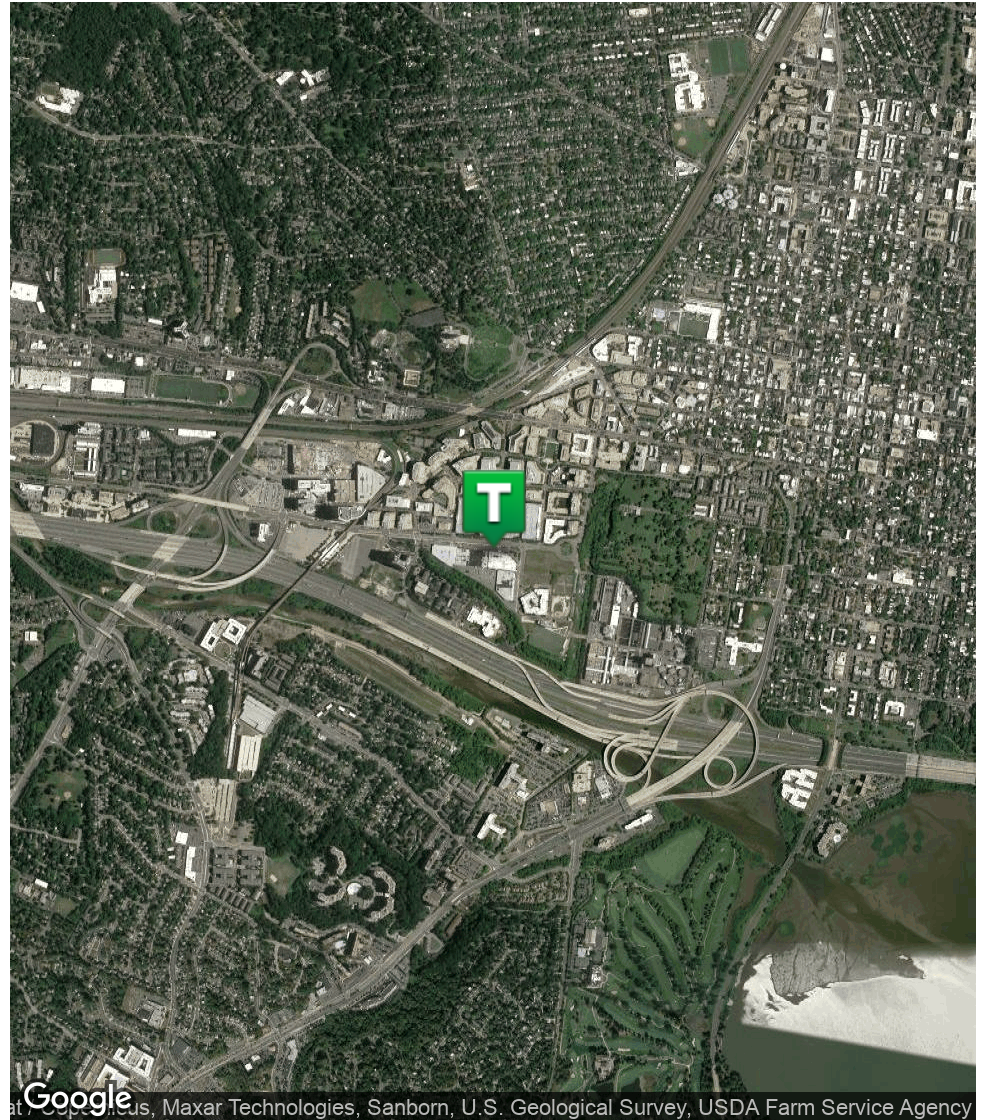
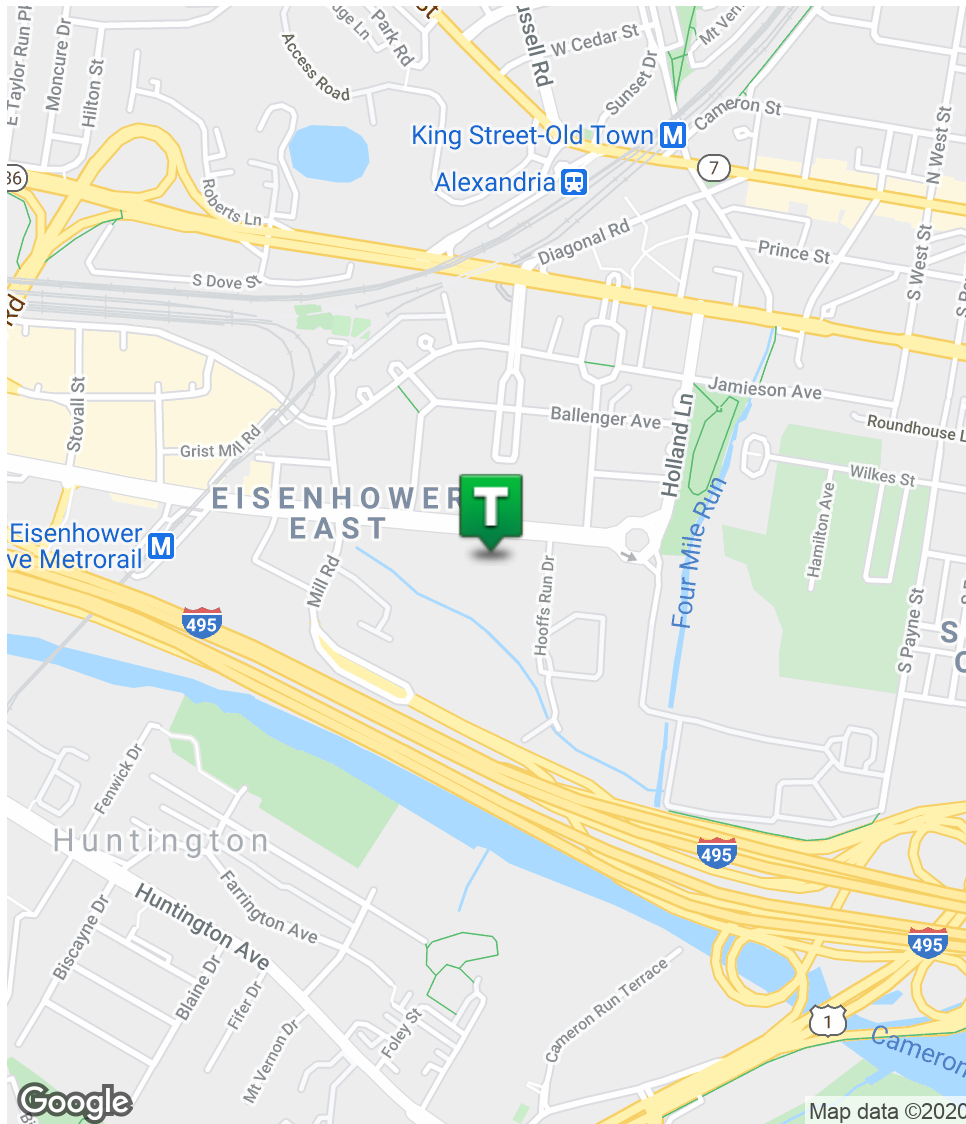


www.tartanproperties.com

WAREHOUSE SPACE FOR LEASE 2012 EISENHOWER AVE.

ALEXANDRIA, VIRGINIA

TARTAN
PROPERTIES



Leasing by:

MIKE PORTERFIELD

703.836.6555 x101 | mike@tartanproperties.com



www.tartanproperties.com