



Property Features

- Move-in ready flexible office with great natural light and open work space
- In the heart of downtown historic Fredericksburg within walking distance to the train station/VRE
- Private on-site parking
- Elevator access to the 2nd floor
- Building Signage opportunity
- CD Zoning

Specifications

Size	7,333 SF (2 nd Floor)
Rental Rate	\$18.00 PSF NNN (+\$3.00)
Timing	Available Immediately



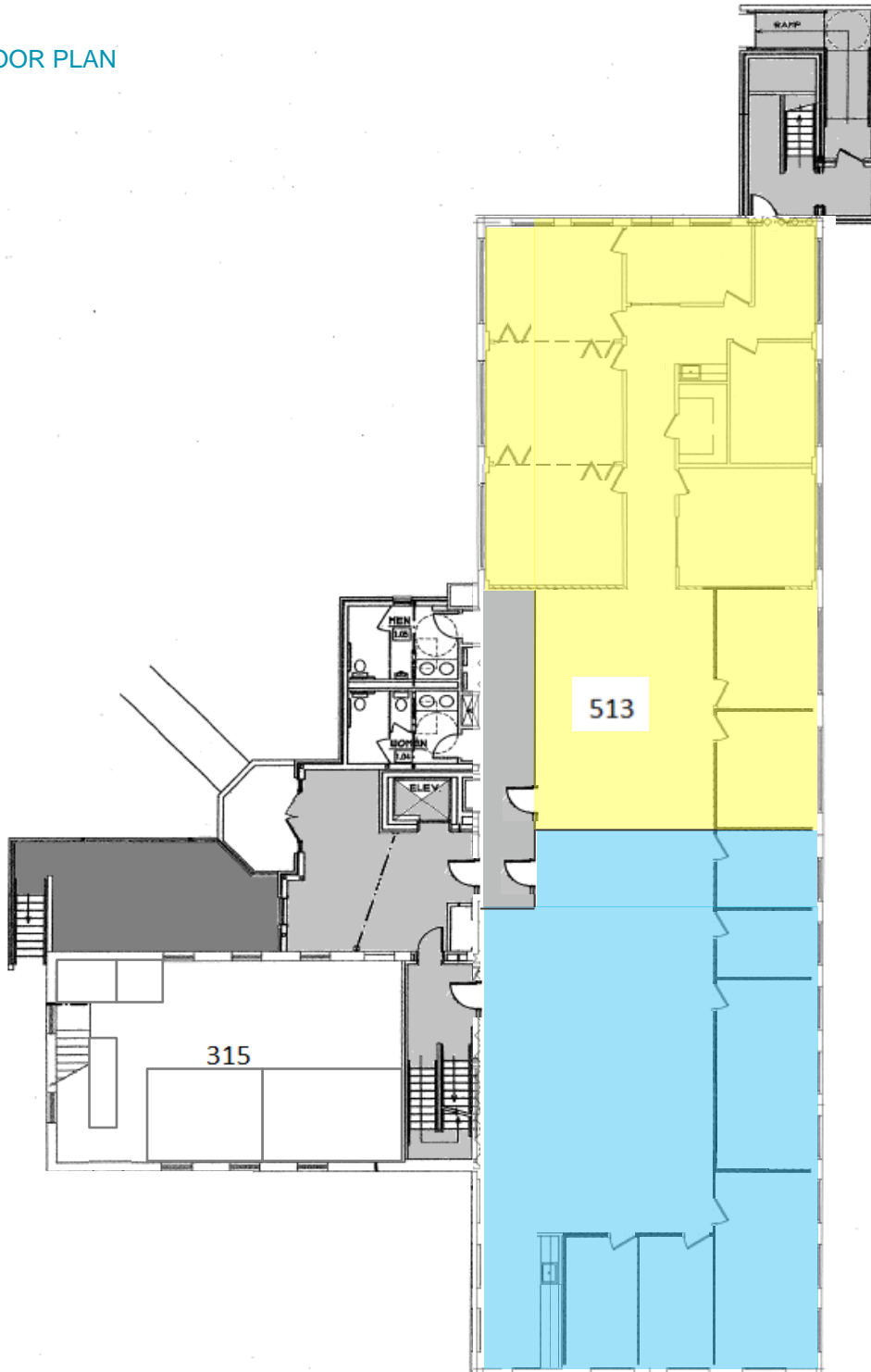
For more information, contact:

JAMIE SCULLY, CCIM
 First Vice President
 540 322 4140
jamie.scully@thalhimer.com

CHRIS RUSSOTTI
 Associate
 540 322 4153
christopher.russotti@thalhimer.com

Eagle Village
 1125 Jefferson Davis Highway, Suite 350
 Fredericksburg, VA 22401-8449
www.thalhimer.com

2nd FLOOR PLAN



For more information, contact:

JAMIE SCULLY, CCIM
First Vice President
540 322 4140
jamie.scully@thalhimer.com

CHRIS RUSSOTTI
Associate
540 322 4153
christopher.russotti@thalhimer.com

Eagle Village
1125 Jefferson Davis Highway, Suite 350
Fredericksburg, VA 22401-8449
www.thalhimer.com