



# HOUWMAN BUILDING

## Downtown Sioux Falls

### Newly Built-Out Office Space



314 South Main Avenue  
Sioux Falls, SD 57104



**size**  
1,952 rsf



**price**  
\$22 / square foot  
(gross + utilities)



**location**  
High-profile downtown office location next to Washington Pavilion on Main Avenue.



**layout**  
3 large executive offices, open work space and windows throughout! Common area restroom and elevator.



**delivery**  
This new construction buildout is anticipated to be complete Fall 2020.



**co-tenancy**  
Washington Pavilion, Josiah's Coffeehouse, MacKenzie River Pizza Co., Starbucks, Coffea, Minerva's, Wine Time on Main, Blarney Stone Pub, GreatLIFE, Parker's Bistro.

Information deemed reliable but not guaranteed.



Lake Lorraine | 2571 S. Westlake Drive #100  
Sioux Falls, South Dakota 57106  
VBClink.com | 605.361.8211



605.351.5512  
Autumn.Kaufhold@VBClink.com

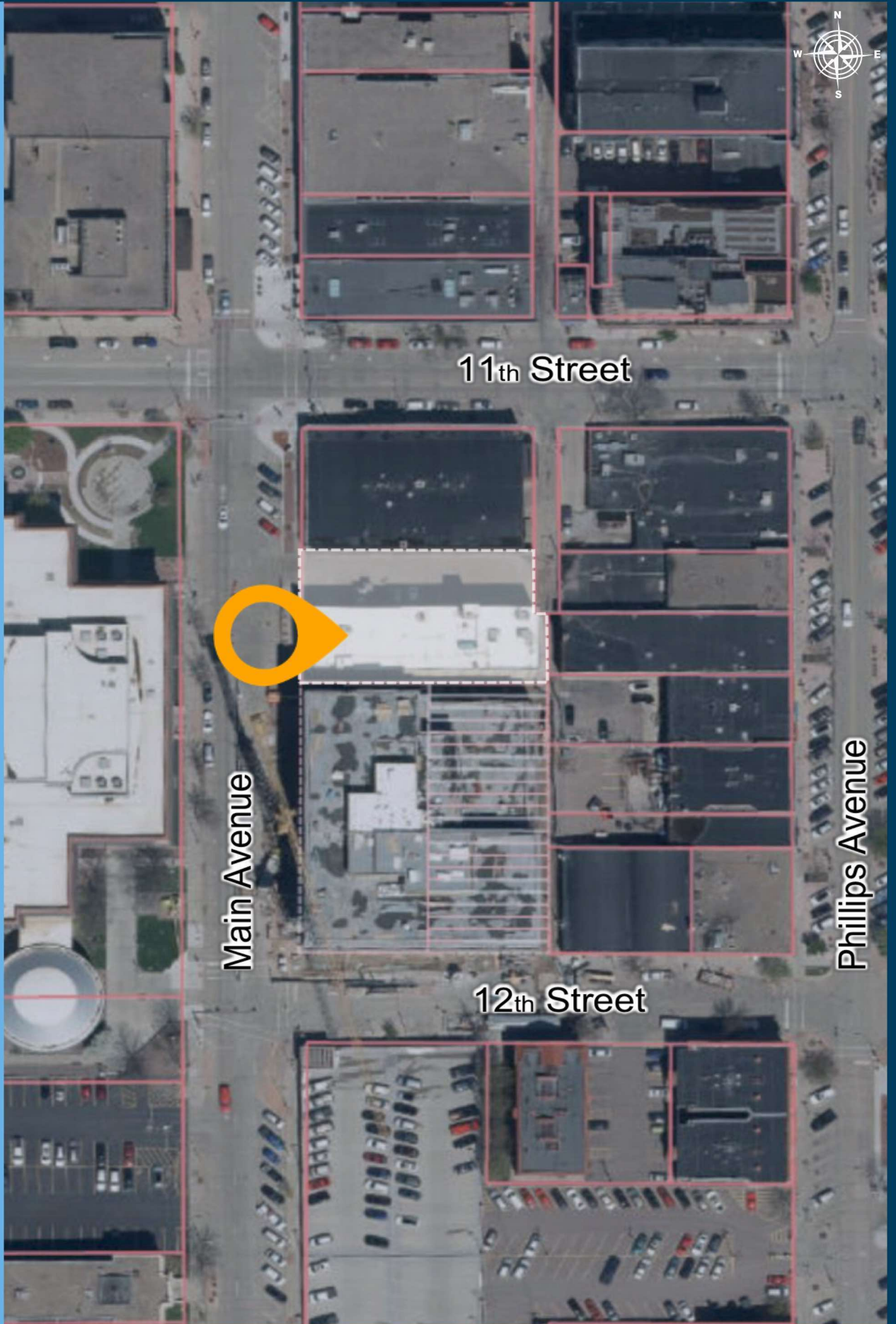


605.376.0127  
Ryan@VBClink.com

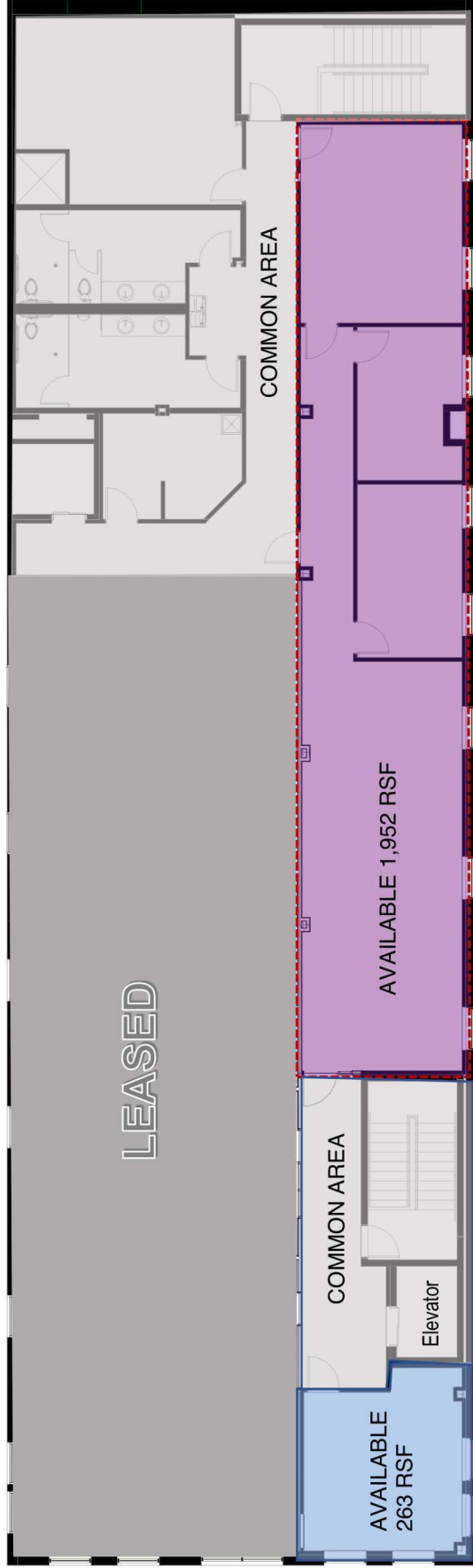
# AREA MAP



# PARCEL MAP



# FLOOR PLAN



**1** Floor Plan - Square Footages

Scale: 3/16" = 1'-0"

PROPERTY PHOTOS

