

6 Parcels ~ 3 Homes ~ 3.16 Acres

VCRE.CO

5328-5344 Ballenger Creek Pike | Frederick | MD | 21703



Excellent opportunity and endless possibilities on this 6-parcel property. Featuring 3 homes and 3.16 acres. Offered at \$995,000.



Office: 240.367.9600 | Fax: 240.668.6822 | 1845 Brookfield Ct. | Frederick, MD 21701

Tony "C" Checchia

301.471.8669 (Tony) mobile

TonyC@vcre.co

240.367.9600

OPPORTUNITY KNOCKS!!

- ◆ Great for builders, investors and flippers
- ◆ Potential redevelopment site
- ◆ Expand or remodel
- ◆ Live in one home rent the others
- ◆ Easy Access to I-270 & 70

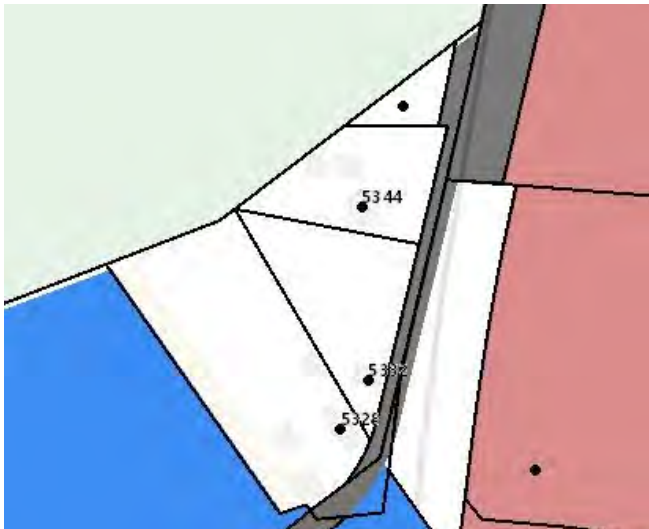


5328-5344 Ballenger Creek Pike

Frederick | MD | 21703

VCRE.CO

Ariel & Zoning Maps



Disclaimer: Information obtained from sources deemed to be reliable. However, we make no guarantee, warranty or representation. Information, prices, and other data may change without notice.

Features

- ◆ **3.16 Acres total**
- ◆ **Zoned Agricultural/Comprehensively Zoned Medium Density Residential**
- ◆ **Private well and septic**
- ◆ **Public water and sewer taps in front of property**
- ◆ **3 Homes, 2 outbuildings, shed, garage**
- ◆ **Recent upgrades to include new roof & new windows**
- ◆ **Fully fenced**
- ◆ **Private shared driveway**
- ◆ **Detached concrete pad**
- ◆ **Easy Access to I-270 & 70**

Disclaimer: Information obtained from sources deemed to be reliable. However, we make no guarantee, warranty or representation. Information, prices, and other data may change without notice.

Zoning



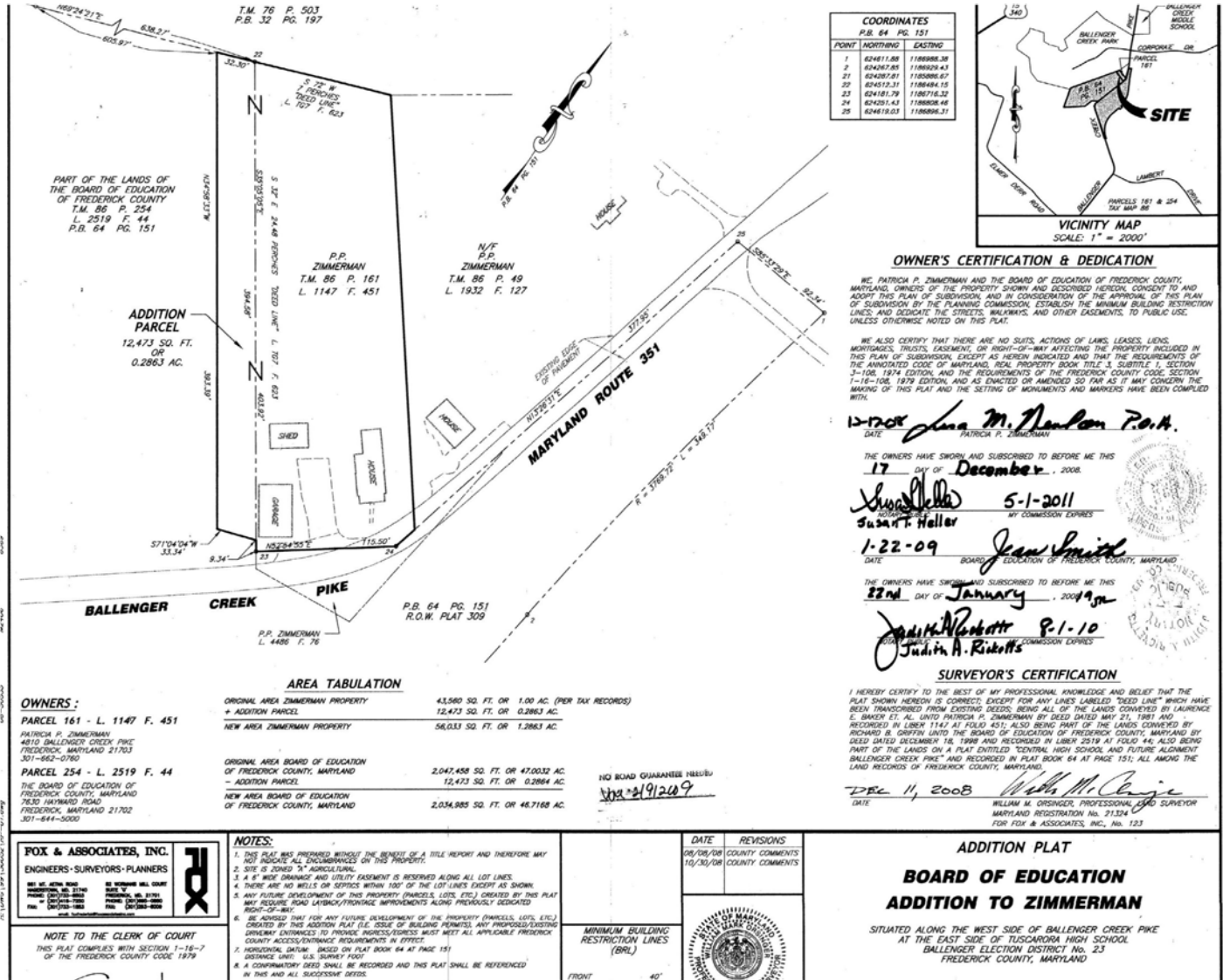
Disclaimer: Information obtained from sources deemed to be reliable. However, we make no guarantee, warranty or representation. Information, prices, and other data may change without notice.

5328-5344 Ballenger Creek Pike

Frederick | MD | 21703

VCRE.CO

Plat



Disclaimer: Information obtained from sources deemed to be reliable. However, we make no guarantee, warranty or representation. Information, prices, and other data may change without notice.

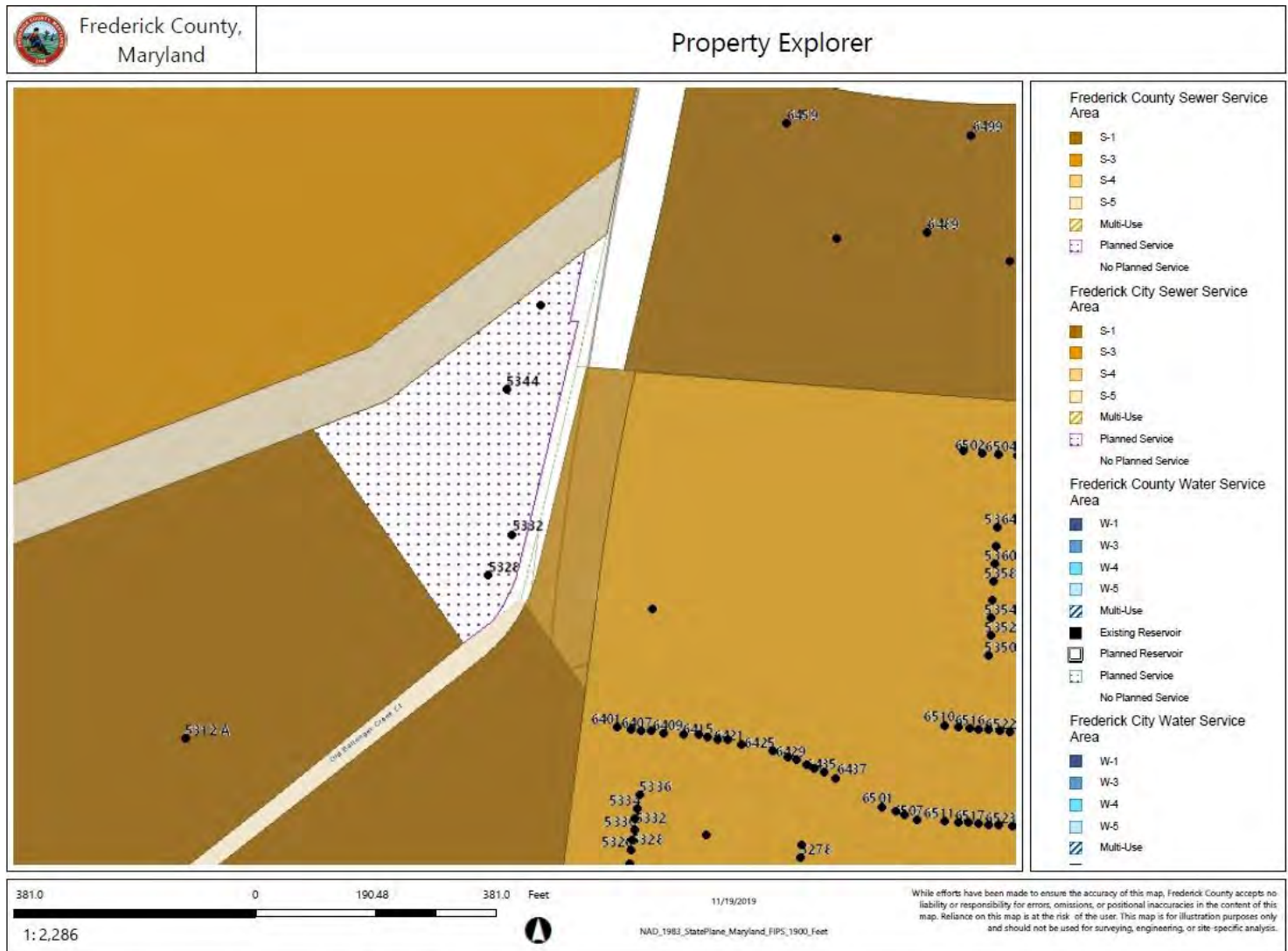


1845 Brookfield Court
Frederick, MD 21701

Office 240.367.9600
Cell 301.471.TONY (8669)
vcre.co



Water & Sewer Map



Disclaimer: Information obtained from sources deemed to be reliable. However, we make no guarantee, warranty or representation. Information, prices, and other data may change without notice.