



**INTERSTATE 10**

## I-10 & Arena Road

Sulphur, Louisiana 70665

### Property Highlights

- ±60 acres with Interstate frontage available
- Located at the first Sulphur exit from Texas (exit 20), adjacent to several hotels and the West Cal Arena & Event Center
- Site is partially cleared with all utilities available
- Access to site via Arena Road
- Located within Sulphur City Limits
- Commercial Zoning (Municipal)
- Phase 1 Environmental available from Listing Agent
- Property is located in a TIF District
- Additional acreage (±8 acres) available east of subject site from same owner

### Sale Price

\$9.75 / SF



For more information

**Matt Redd, CCIM, SIOR, CRE**

O: 337 310 0605 | C: 337 489 9666  
mattredd@reddproperties.com

**CALL OR EMAIL FOR MORE INFORMATION**

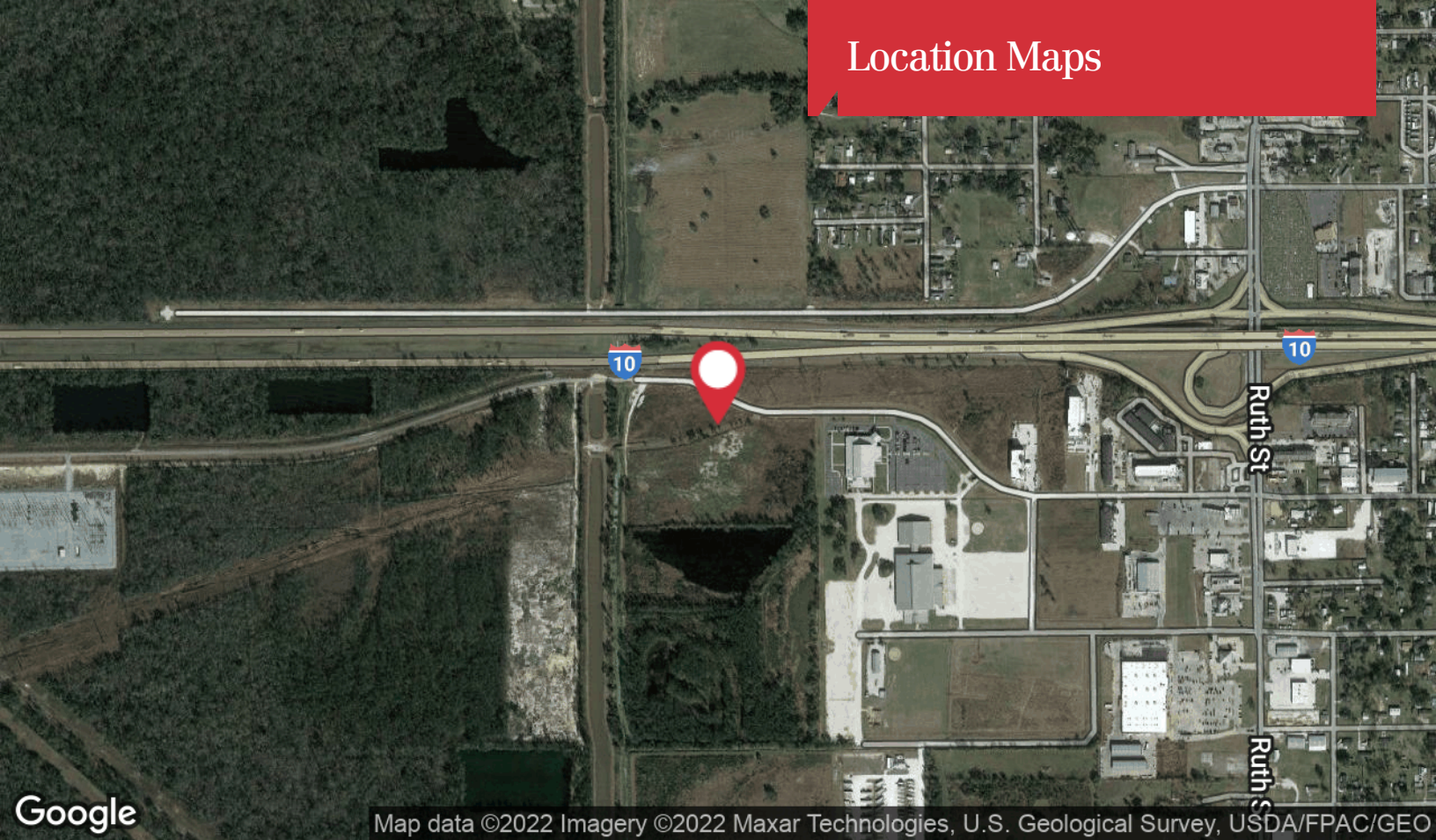
NO WARRANTY OR REPRESENTATION, EXPRESS OR IMPLIED, IS MADE AS TO THE ACCURACY OF THE INFORMATION CONTAINED HEREIN, AND THE SAME IS SUBMITTED SUBJECT TO ERRORS, OMISSIONS, CHANGE OF PRICE, RENTAL OR OTHER CONDITIONS, PRIOR SALE, LEASE OR FINANCING, OR WITHDRAWAL WITHOUT NOTICE, AND OF ANY SPECIAL LISTING CONDITIONS IMPOSED BY OUR PRINCIPALS NO WARRANTIES OR REPRESENTATIONS ARE MADE AS TO THE CONDITION OF THE PROPERTY OR ANY HAZARDS CONTAINED THEREIN ARE ANY TO BE IMPLIED. LICENSED IN LOUISIANA.

810 W Bayou Pines Drive  
Lake Charles, LA 70601  
337 310 7333 tel  
[latterblum.com](http://latterblum.com)

April 27, 2022



# Location Maps



Map data ©2022 Imagery ©2022 Maxar Technologies, U.S. Geological Survey, USDA/FPAC/GEO



Map data ©2022

810 W Bayou Pines Drive  
Lake Charles, LA 70601  
337 310 7333 tel  
[latterblum.com](http://latterblum.com)