



**Property Features**

- 2,500 SF recently renovated space which could be used for retail or office
- Signalized corner location (Main St/Union St)
- Two large street level retail storefront display areas
- Space is separately metered
- Has a mezzanine area which could be used for additional storage
- Zoned CBD in the City of Danville
- Rental rate \$9.12 SF (\$1,900.00 month)

**Demographics**

	1 Mile	3 Miles	5 Miles
Population	8,079	28,662	46,915
No. of Households	3,486	12,314	20,188
Avg. HH Income	\$49,402	\$43,366	\$46,515
Daytime Population	9,276	38,740	54,509

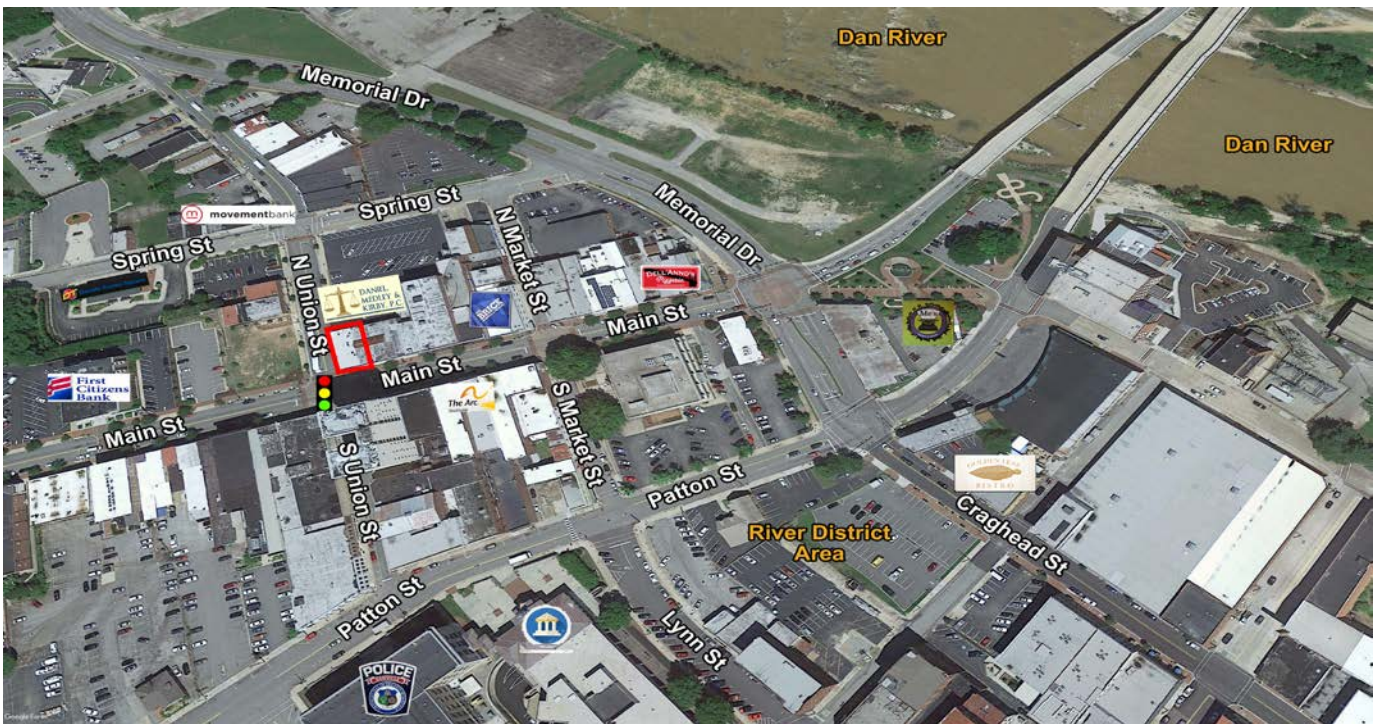
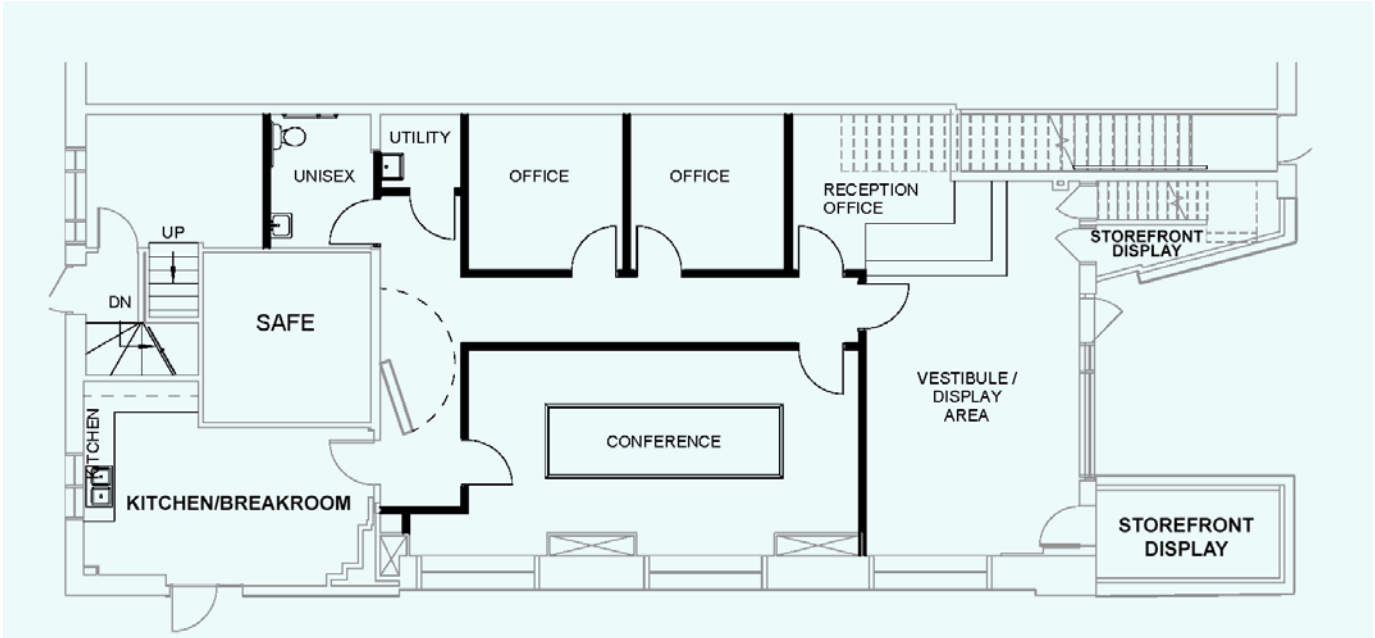
For more information, contact:

**NORMAN MOON, CCIM, SIOR, CRE**  
 First Vice President  
 434 455 2302  
[norman.moon@thalhimer.com](mailto:norman.moon@thalhimer.com)

**GEORGE LUPTON, CCIM**  
 Senior Associate  
 434 455 2306  
[george.luptonthalhimer.com](mailto:george.luptonthalhimer.com)

Coffee Crossing  
 6000 Boonsboro Road, Suite A  
 Lynchburg, VA 24503  
[www.thalhimer.com](http://www.thalhimer.com)

FIRST FLOOR



For more information, contact:

**NORMAN MOON, CCIM, SIOR, CRE**  
 First Vice President  
 434 455 2302  
[norman.moon@thalhimer.com](mailto:norman.moon@thalhimer.com)

**GEORGE LUPTON, CCIM**  
 Senior Associate  
 434 455 2306  
[george.luptonthalhimer.com](mailto:george.luptonthalhimer.com)

Coffee Crossing  
 6000 Boonsboro Road, Suite A  
 Lynchburg, VA 24503  
[www.thalhimer.com](http://www.thalhimer.com)