

RAINBOW VALLEY ROAD & ELLIOT ROAD

MARICOPA COUNTY, ARIZONA

PRICE: \$3,728,560.00 (\$22,000.00/acre)

PROPERTY SIZE: +/- 169.48 acres

ASSESSOR'S PARCEL NUMBERS: 400-07-007, 400-52-002, 400-52-003A, and 400-52-004A,

ZONING: RU-43

UTILITIES:

Phone - CenturyLink/Cox

Power - APS

Water - Clearwater Water Company

HIGHLIGHTS: Incredible Maricopa County island investment / development opportunity between Good-year and Buckeye, Arizona. The property is just 1 mile from Estrella MPC. There are 2 custom home subdivisions adjacent to the property and Rainbow Valley Elementary school is 1/2 mile to the south. The future Loop 303 Highway is planned to come through Rainbow Valley. The property is elevated, level, and has paved road access. Please contact listing broker with any questions.



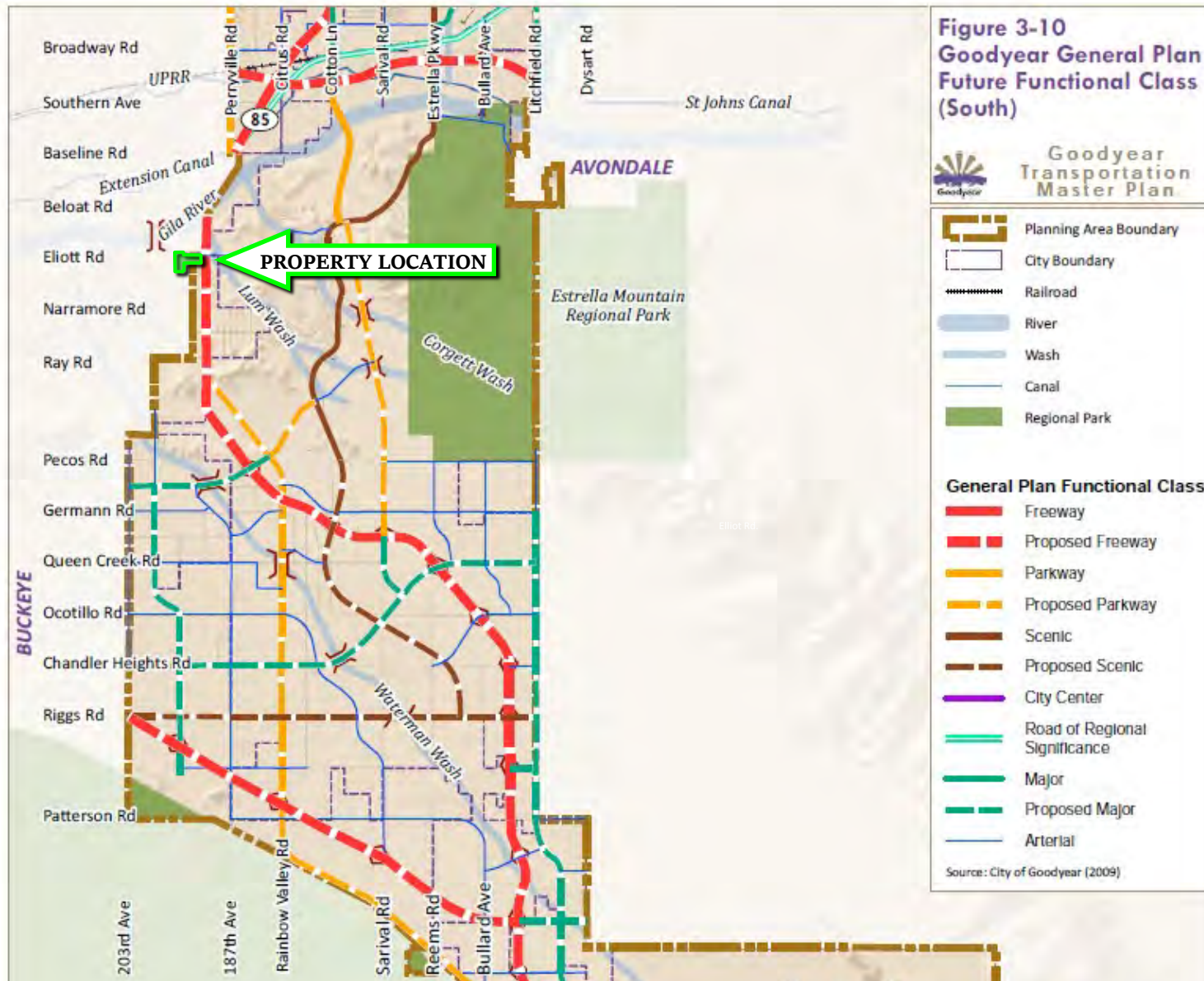
SCOTT TRUITT - DESIGNATED BROKER
2711 EAST INDIAN SCHOOL ROAD SUITE 205
PHOENIX, ARIZONA 85016

TRUITT@WESTERNLANDCO.NET

OFFICE: 623-977-4900
MOBILE: 602-622-9099
FAX: 888-901-4243

RAINBOW VALLEY ROAD & ELLIOT ROAD

MARICOPA COUNTY, ARIZONA



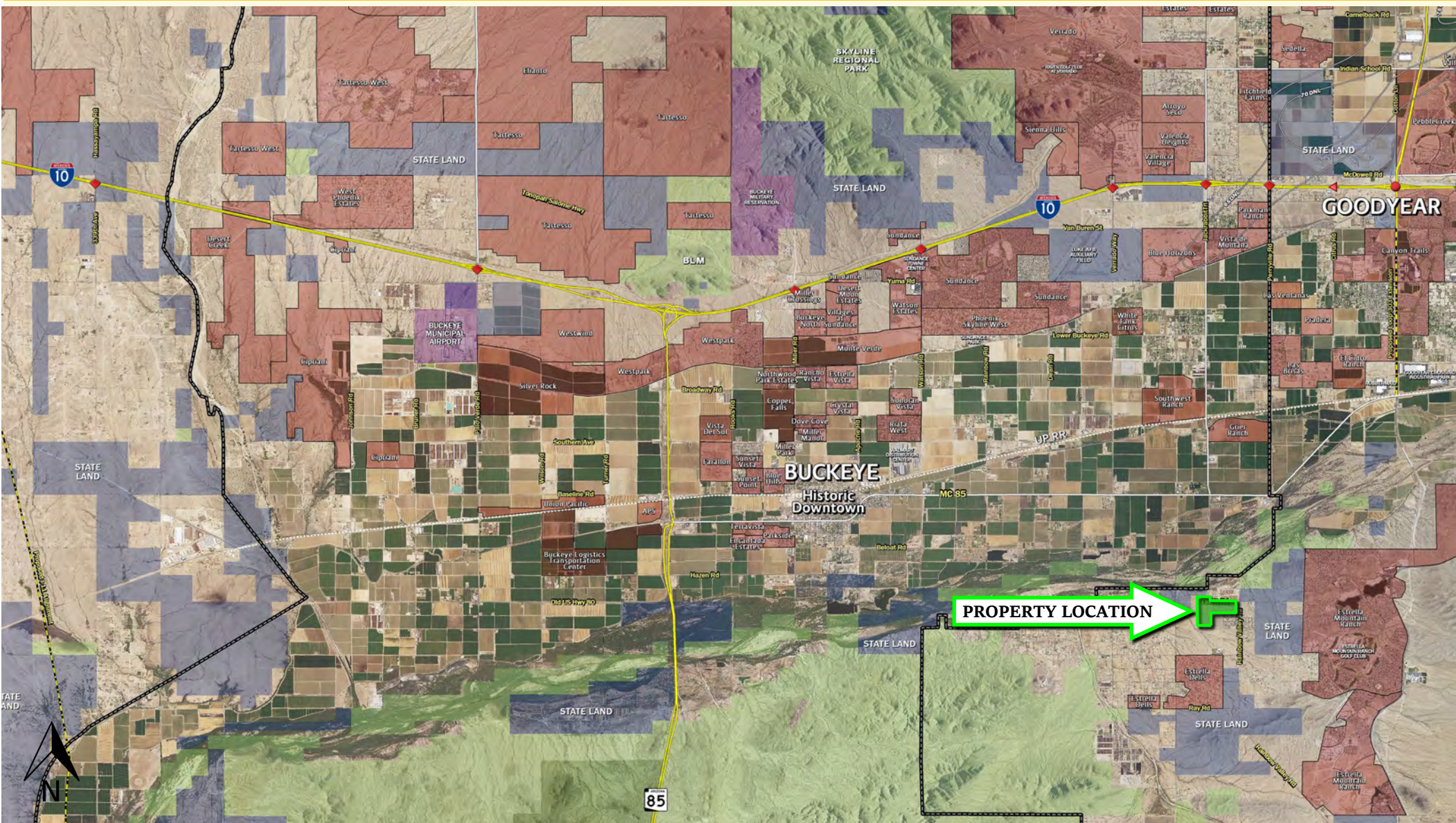
SCOTT TRUITT - DESIGNATED BROKER
2711 EAST INDIAN SCHOOL ROAD SUITE 205
PHOENIX, ARIZONA 85016

TRUITT@WESTERNLANDCO.NET

OFFICE: 623-977-4900
MOBILE: 602-622-9099
FAX: 888-901-4243

RAINBOW VALLEY ROAD & ELLIOT ROAD

MARICOPA COUNTY, ARIZONA



SCOTT TRUITT - DESIGNATED BROKER
2711 EAST INDIAN SCHOOL ROAD SUITE 205
PHOENIX, ARIZONA 85016

TRUITT@WESTERNLANDCO.NET

OFFICE: 623-977-4900
MOBILE: 602-622-9099
FAX: 888-901-4243

Notice: All information contained herein is based upon information and sources deemed to be reliable, however, Western Land Company, LLC., its Owners, Designated Broker, Officers or Assigns, and Sales Associates will not be held responsible for any inaccuracies; further, it is recommended to all parties to satisfy themselves as to the accuracy of all information provided.

RAINBOW VALLEY ROAD & ELLIOT ROAD

MARICOPA COUNTY, ARIZONA



SCOTT TRUITT - DESIGNATED BROKER
2711 EAST INDIAN SCHOOL ROAD SUITE 205
PHOENIX, ARIZONA 85016

TRUITT@WESTERNLANDCO.NET

OFFICE: 623-977-4900
MOBILE: 602-622-9099
FAX: 888-901-4243