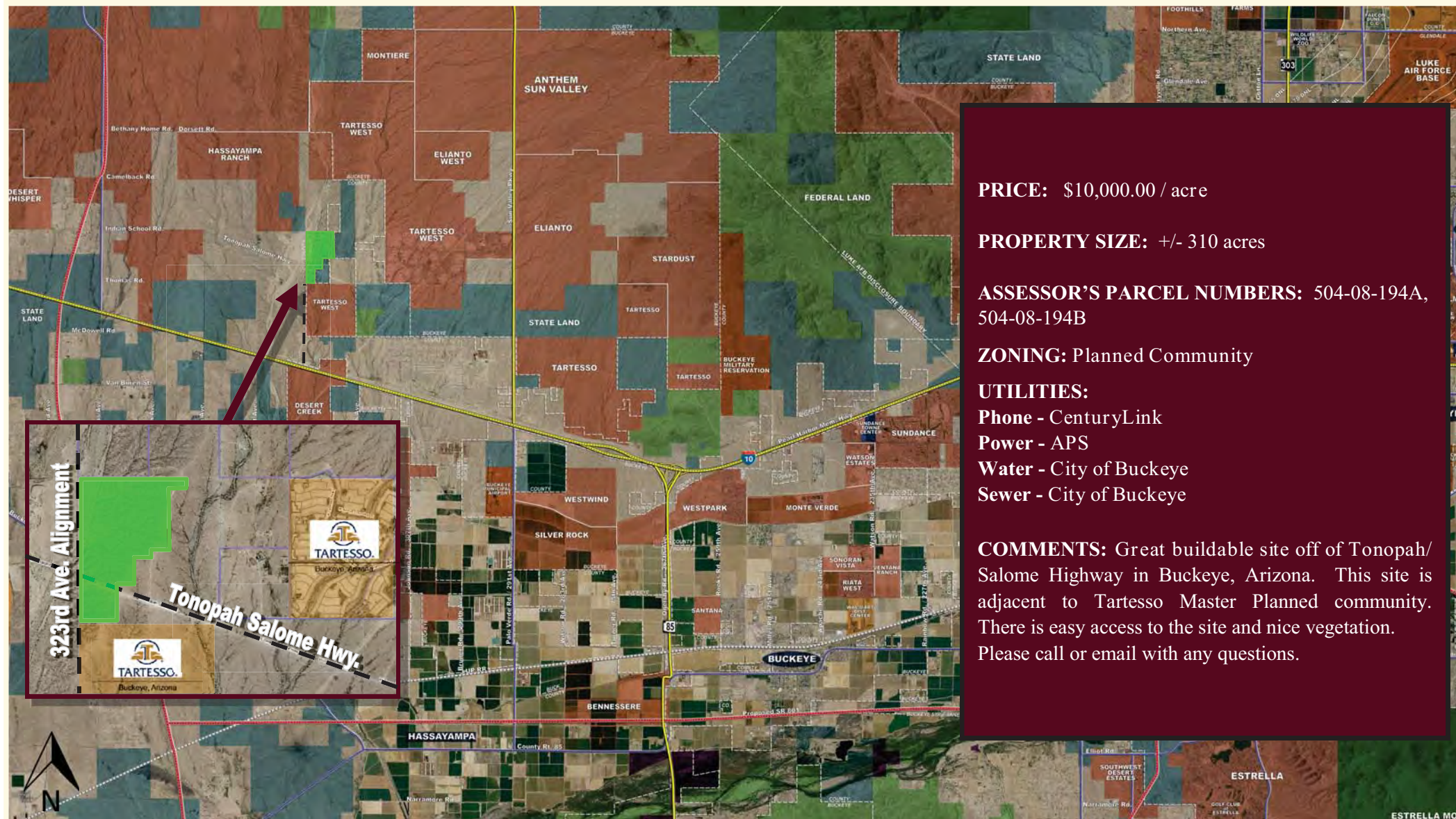


# 323RD AVENUE ALIGNMENT & TONOPAH SALOME HIGHWAY BUCKEYE, ARIZONA



**PRICE:** \$10,000.00 / acre

**PROPERTY SIZE:** +/- 310 acres

**ASSESSOR'S PARCEL NUMBERS:** 504-08-194A,  
504-08-194B

**ZONING:** Planned Community

**UTILITIES:**

**Phone - CenturyLink**

**Power - APS**

**Water - City of Buckeye**

**Sewer - City of Buckeye**

**COMMENTS:** Great buildable site off of Tonopah/Salome Highway in Buckeye, Arizona. This site is adjacent to Tartesso Master Planned community. There is easy access to the site and nice vegetation. Please call or email with any questions.



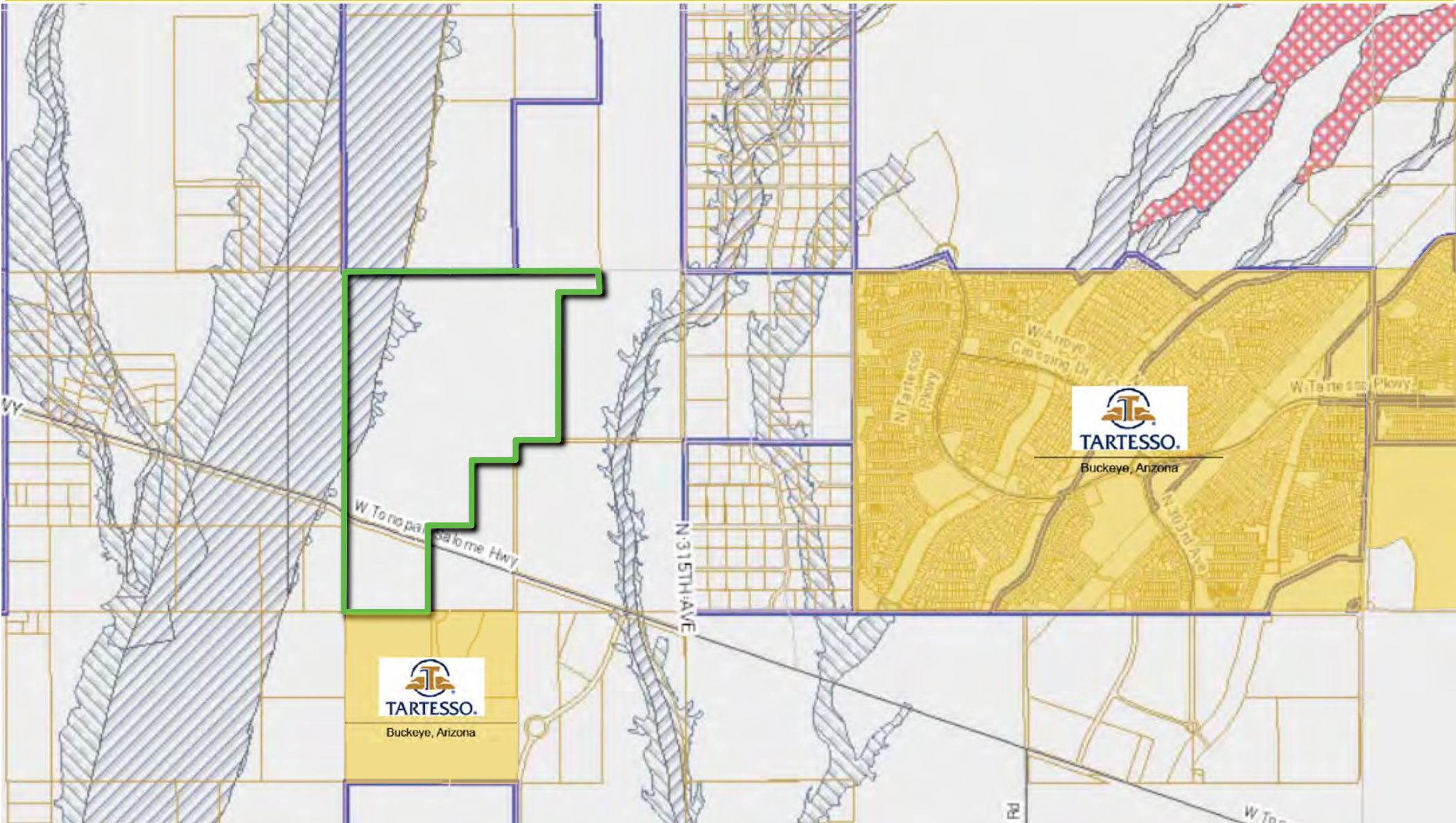
SCOTT TRUITT - DESIGNATED BROKER  
2711 EAST INDIAN SCHOOL ROAD SUITE 205  
PHOENIX, ARIZONA 85016

OFFICE: 623-977-4900  
MOBILE: 602-622-9099  
FAX: 888-901-4243

TRUITT@WESTERNLANDCO.NET

# 323RD AVENUE ALIGNMENT & TONOPAH SALOME HIGHWAY

## BUCKEYE, ARIZONA



SCOTT TRUITT - DESIGNATED BROKER  
2711 EAST INDIAN SCHOOL ROAD SUITE 205  
PHOENIX, ARIZONA 85016

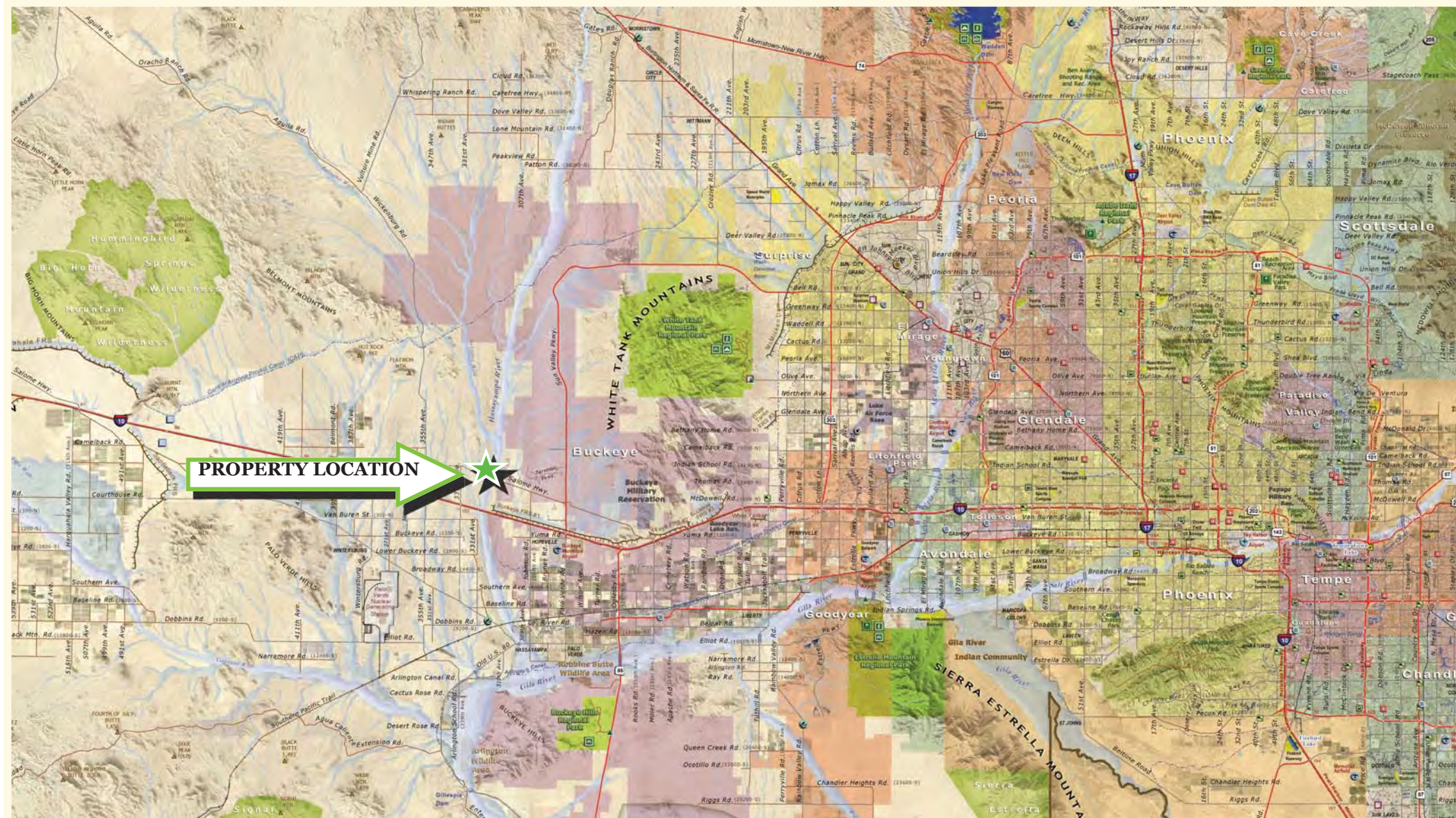
OFFICE: 623-977-4900  
MOBILE: 602-622-9099  
FAX: 888-901-4243

[TRUITT@WESTERNLANDCO.NET](mailto:TRUITT@WESTERNLANDCO.NET)

Notice: All information contained herein is based upon information and sources deemed to be reliable, however, Western Land Company, LLC., its Owners, Designated Broker, Officers or Assigns, and Sales Associates will not be held responsible for any inaccuracies; further, it is recommended to all parties to satisfy themselves as to the accuracy of all information provided.

# 323RD AVENUE ALIGNMENT & TONOPAH SALOME HIGHWAY

## BUCKEYE, ARIZONA



SCOTT TRUITT - DESIGNATED BROKER  
2711 EAST INDIAN SCHOOL ROAD SUITE 205  
PHOENIX, ARIZONA 85016

OFFICE: 623-977-4900  
MOBILE: 602-622-9099  
FAX: 888-901-4243

[TRUITT@WESTERNLANDCO.NET](mailto:TRUITT@WESTERNLANDCO.NET)

Notice: All information contained herein is based upon information and sources deemed to be reliable, however, Western Land Company, LLC., its Owners, Designated Broker, Officers or Assigns, and Sales Associates will not be held responsible for any inaccuracies; further, it is recommended to all parties to satisfy themselves as to the accuracy of all information provided.