

70 North St. Clair

Office For Sale or Lease

Painesville, Ohio 44077 (Lake County)

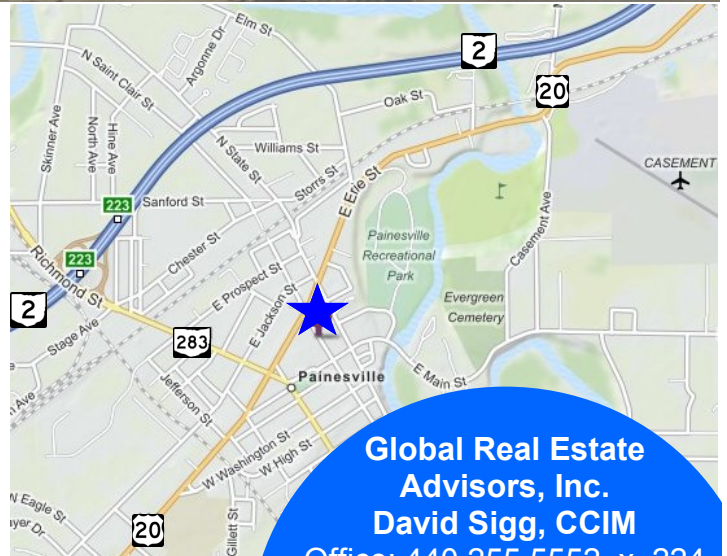


Property Highlights:

- Single Story Office Building
- Building Size: 10,071± SF
- 150 to 1,200± SF Available For Lease
- Centrally Located in Downtown Painesville
- Easy Access Surface Parking

Lease Rate: \$8.00 psf Net Lease Rate

Sale Price: \$795,000



**Global Real Estate
Advisors, Inc.
David Sigg, CCIM**

Office: 440.255.5552 x. 224

Cell: 440.668.3300

Sigg@GlobalCommercialRE.com

Neil Sawicki, SIOR, Broker

440.255.5552 x. 221

Neil@GlobalcommercialRE.com



www.GlobalCommercialRE.com

8585 East Ave., Mentor, Ohio 44060

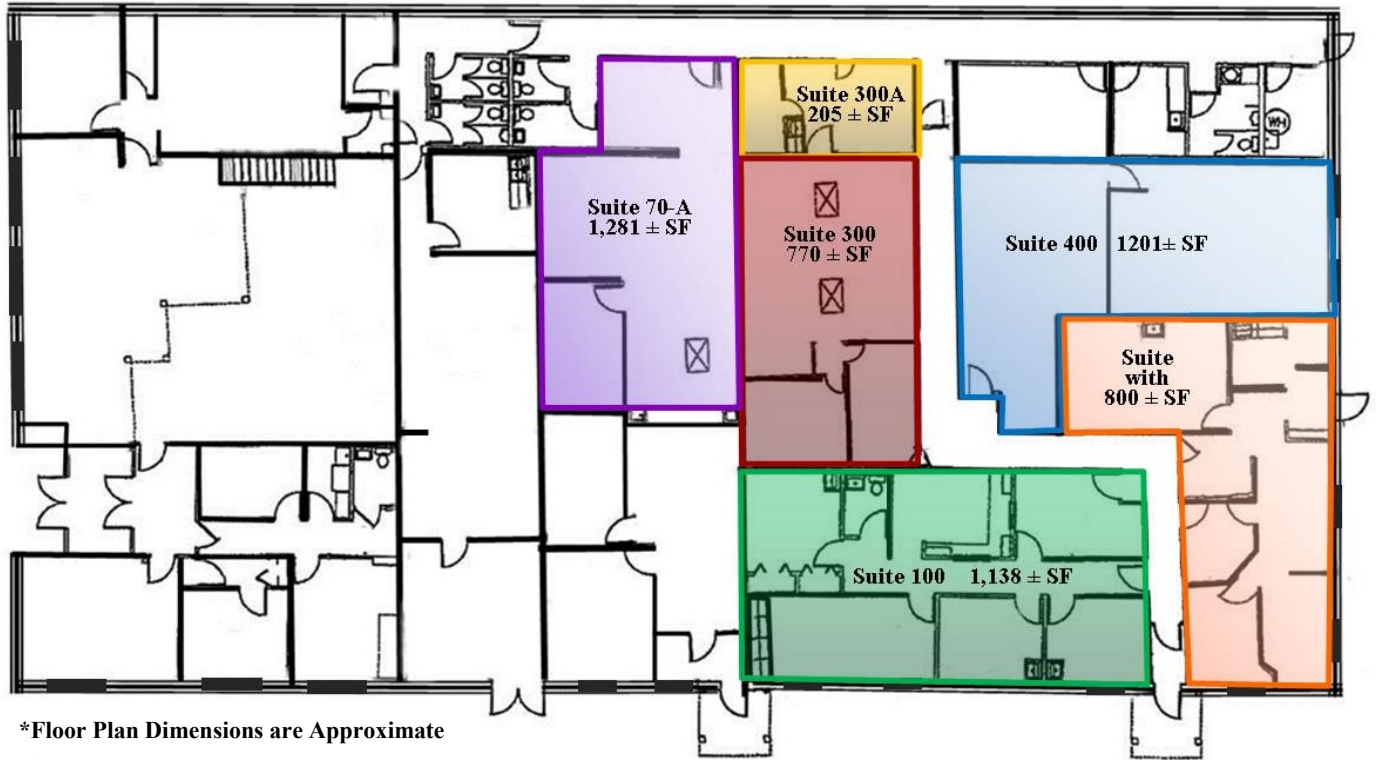
Real Estate Advisors Inc.
BROKER

This information has been secured from sources we believe are reliable, but we make no representations or warranties, expressed or implied, as to the accuracy of the information. References to condition, square footage or age are approximate. Buyer or Tenant acknowledges that they are relying on their own investigations and are not relying on Broker provided information. Procuring broker shall only be entitled to a commission, calculated in accordance with the rates approved by our principal only if such procuring broker executes a brokerage agreement acceptable to us and our principal and the conditions as set forth in the brokerage agreement are fully and unconditionally satisfied. Although all information furnished regarding property for sale, rental, or financing is from sources deemed reliable, such information has not been verified and no express representation is made nor is any to be implied as to the accuracy thereof and it is submitted subject to errors, omissions, change of price, rental or other conditions, prior sale, lease or financing, or withdrawal without notice and to any special conditions imposed by our principal.

70 North St. Clair

Office For Sale or Lease

Painesville, Ohio 44077 (Lake County)



www.GlobalCommercialRE.com
8585 East Ave., Mentor, Ohio 44060

Real Estate Advisors Inc.
BROKER

Global Real Estate
Advisors, Inc.
David Sigg, CCIM
Office: 440.255.5552 x. 224
Cell: 440.668.3300
Sigg@GlobalCommercialRE.com
Neil Sawicki, SIOR, Broker
440.255.5552 x. 221
Neil@GlobalcommercialRE.com

This information has been secured from sources we believe are reliable, but we make no representations or warranties, expressed or implied, as to the accuracy of the information. References to condition, square footage or age are approximate. Buyer or Tenant acknowledges that they are relying on their own investigations and are not relying on Broker provided information. Procuring broker shall only be entitled to a commission, calculated in accordance with the rates approved by our principal only if such procuring broker executes a brokerage agreement acceptable to us and our principal and the conditions as set forth in the brokerage agreement are fully and unconditionally satisfied. Although all information furnished regarding property for sale, rental, or financing is from sources deemed reliable, such information has not been verified and no express representation is made nor is any to be implied as to the accuracy thereof and it is submitted subject to errors, omissions, change of price, rental or other conditions, prior sale, lease or financing, or withdrawal without notice and to any special conditions imposed by our principal.