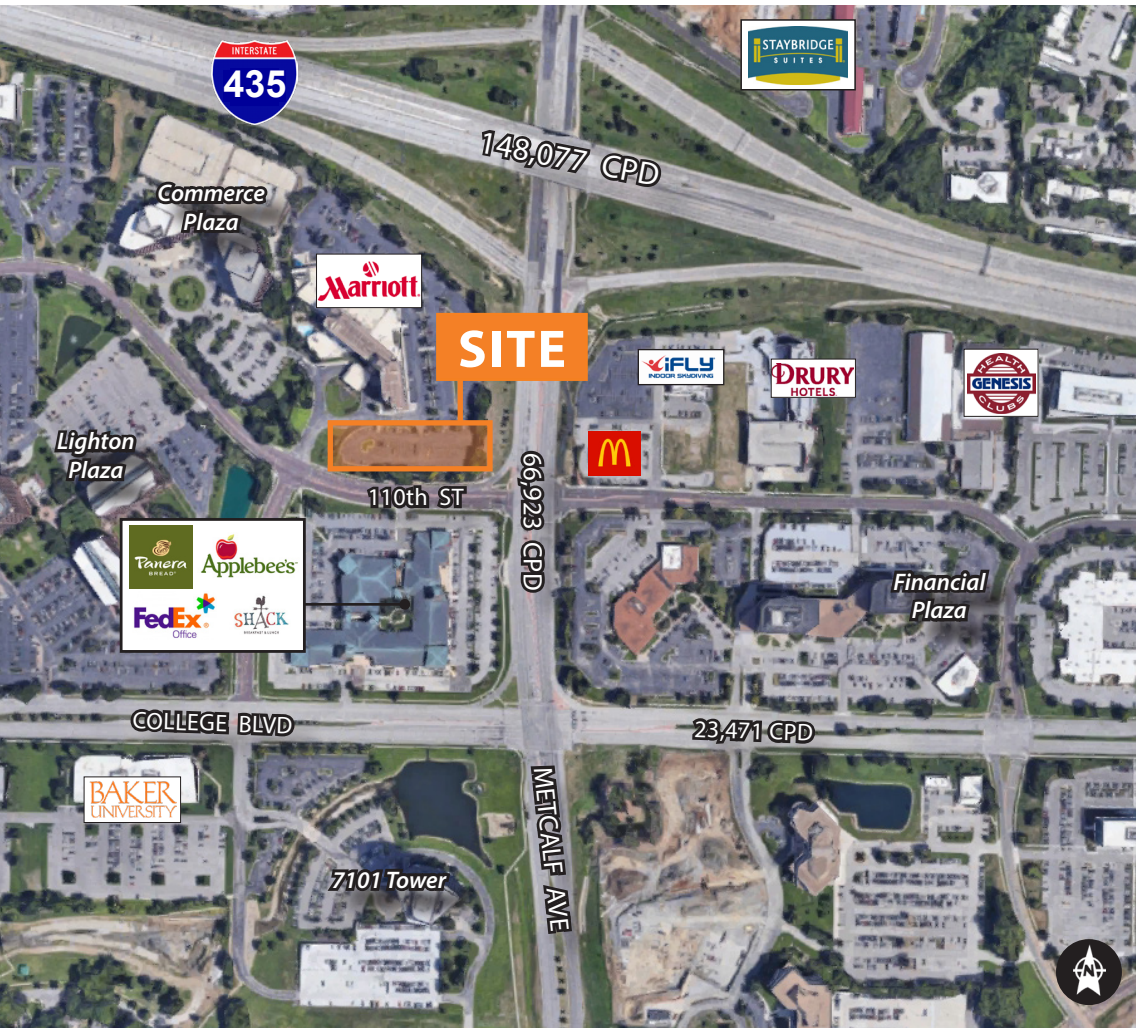


1.9 AC PAD SITE AVAILABLE FOR SALE OR BTS

LANE4

10800 METCALF AVE, OVERLAND PARK, KS



HIGHLIGHTS

- New to market!
- Incredible location in a well established commercial corridor; at lighted intersection
- High volume intersection with 63,923 CPD on Metcalf and 148,077 CPD on I-435
- Strong daytime population in the heart of the College Boulevard office corridor
- Visibility from Metcalf and I-435; immediate access to I-435
- Marriott Hotel under new ownership with extensive renovation plans

DEMOGRAPHICS

	1 MILE	3 MILE	5 MILE
Population	10,011	100,369	257,433
Avg. HH Income	\$93,750	\$102,455	\$113,706
# of Businesses	1,487	7,205	14,161
Daytime Population	24,278	162,815	334,563

4705 Central Street | Kansas City, MO 64112
816.960.1444 | lane4group.com

DEVIN SCHUSTER / 816.268.7575
dschuster@lane4group.com

BROOKE SCHWOB / 816.268.9110
bschwob@lane4group.com



1.9 AC PAD SITE AVAILABLE

10800 METCALF AVE, OVERLAND PARK, KS



4705 Central Street | Kansas City, MO 64112
816.960.1444 | lane4group.com

DEVIN SCHUSTER / 816.268.7575
dschuster@lane4group.com

BROOKE SCHWOB / 816.268.9110
bschwob@lane4group.com

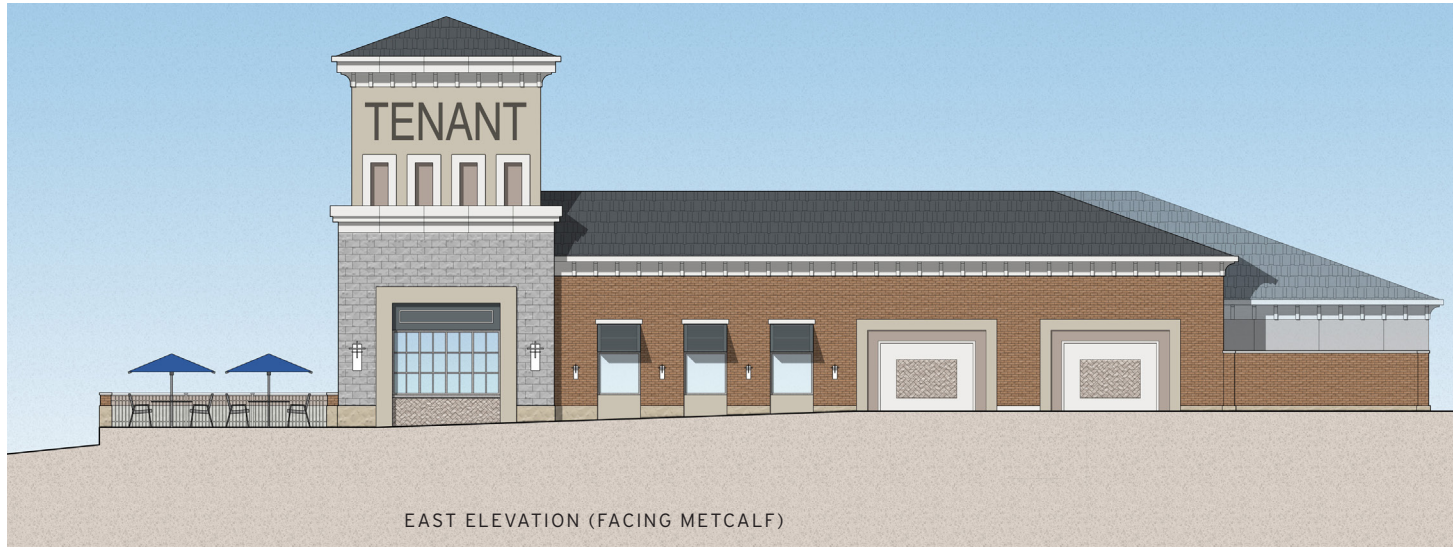


1.9 AC PAD SITE AVAILABLE

10800 METCALF AVE, OVERLAND PARK, KS



PROPOSED ELEVATION EXAMPLES



4705 Central Street | Kansas City, MO 64112
816.960.1444 | lane4group.com

DEVIN SCHUSTER / 816.268.7575
dschuster@lane4group.com

BROOKE SCHWOB / 816.268.9110
bschwob@lane4group.com

