

Aerial



Johns Landing Portfolio:

- A. River Forum I 4380 SW Macadam
- B. River Forum II 4386 SW Macadam
- C. Riverside Centre 5100 SW Macadam
- D. 5500 Macadam Bldg. 5550 SW Macadam

For more information visit: www.johnslandingshorenstein.com

Contact

Mark Fraser, SIOR 503.221.2283 mfraser@kiddermathews.com	Brandon O'Leary 503.221.2289 boleary@kiddermathews.com	Lynda Clarke 503.721.2718 lclarke@kiddermathews.com	Jake Haas 503.721.2728 jhaas@kiddermathews.com
-----------------------------------------------------------------------	---------------------------------------------------------------------	------------------------------------------------------------------	-------------------------------------------------------------

River Forum II

4386 SW Macadam Ave
Portland, oR 97239

Elevator access to parking garage

After hours card-key system

24-hour on-site security guard

Access to River Forum I conference facility, fitness center and River Forum Deli

Immediate access to I-5, I-84, and Highway 26 to Hillsboro

Rental Rate: \$24.50/SF



Contact

Mark Fraser, SIOR
503.221.2283
mfraser@kiddermathews.com

Brandon O'Leary
503.221.2289
boleary@kiddermathews.com

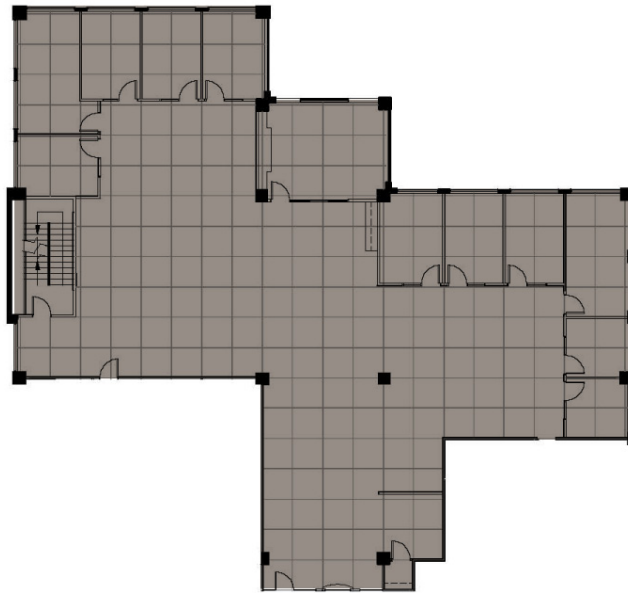
Lynda Clarke
503.721.2718
lclarke@kiddermathews.com

Jake Haas
503.721.2728
jhaas@kiddermathews.com

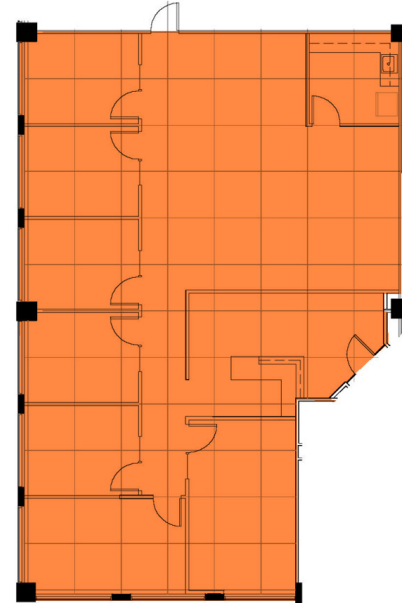
www.johnslandingshorenstein.com

Floor Plans

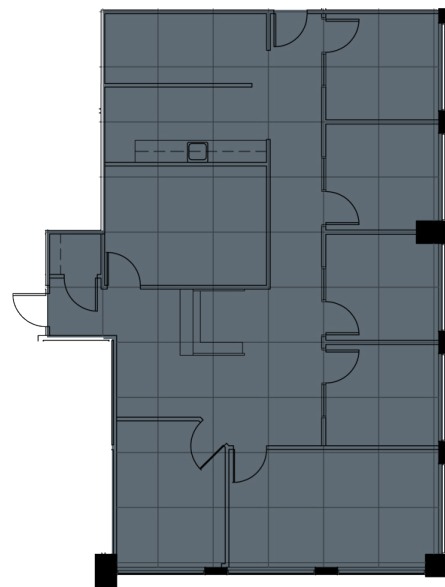
Suite 301



Suite 302



Suite 305



3rd Floor



River Forum II is located on the Willamette River, immediately to the North of the Avalon Hotel in Johns Landing. This building is the second of two Class “A” office buildings offering unsurpassed views and access to the Willamette River. River Forum II offers tenants the opportunity to lease nearly a full floor, while enjoying the additional amenities offered in River Forum I and other buildings owned by Shorenstein Realty in both Johns Landing and the Portland Metro area.

