



**COLDWELL
BANKER
COMMERCIAL**
DANFORTH

FOR LEASE

WA FARM BUREAU BUILDING

\$18.00 SF/yr (MG)

975 Carpenter Rd NE
Lacey, WA 98516

AVAILABLE SPACE
1,599 - 9,271 SF

AREA

On busy Carpenter Road between Tacoma and Portland.



CONTACT

Jason Hearn
360 701 3490
jason.hearn@coldwellbankercommercialdanforth.com

CBCWORLDWIDE.COM

©2021 Coldwell Banker. All Rights Reserved. Coldwell Banker and the Coldwell Banker Commercial logos are trademarks of Coldwell Banker Real Estate LLC. The Coldwell Banker® System is comprised of company owned offices which are owned by a subsidiary of Realogy Brokerage Group LLC and franchised offices which are independently owned and operated. The Coldwell Banker System fully supports the principles of the Equal Opportunity Act.

**COLDWELL BANKER COMMERCIAL
DANFORTH**
33313 1st Way S, Federal Way, WA 98003
253.874.3200



WA FARM BUREAU BUILDING

975 Carpenter Rd NE, Lacey, WA 98516



OFFERING SUMMARY

Available SF:	1,599 - 9,271 SF
Lease Rate:	\$18.00 SF/yr (MG)
Lot Size:	4.2 Acres
Year Built:	2006
Building Size:	42,600 SF

PROPERTY OVERVIEW

Current tenants include Software, Law, WA Farm Bureau Association, Real Estate Office and Education Association. This class A newer office building is in Lacey, On I-5, between Tacoma and Portland. Amenities include larger group meeting space with full kitchen available for pre-scheduled hourly or daily use; an executive conference room on the main floor visible from the main entryway; loading dock to warehouse; card key access 24/7; with recording cameras for added security; great parking; and quiet setting.

PROPERTY HIGHLIGHTS

- Class A Office Building
- Near I-5 between Tacoma and Portland
- Plenty of parking
- 24/7 key card access
- Free month per year lease commitment

CBCWORLDWIDE.COM

Jason Hearn
 360 701 3490
 jason.hearn@coldwellbankercommercialdanforth.com





WA FARM BUREAU BUILDING

975 Carpenter Rd NE, Lacey, WA 98516

LEASE



CBCWORLDWIDE.COM

Jason Hearn
360 701 3490
jason.hearn@coldwellbankercommercialdanforth.com

 **COLDWELL
BANKER
COMMERCIAL**
DANFORTH

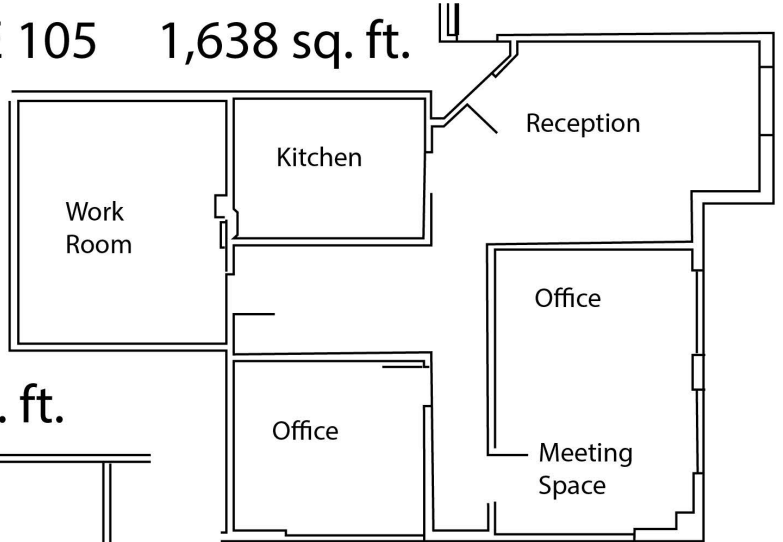


WA FARM BUREAU BUILDING

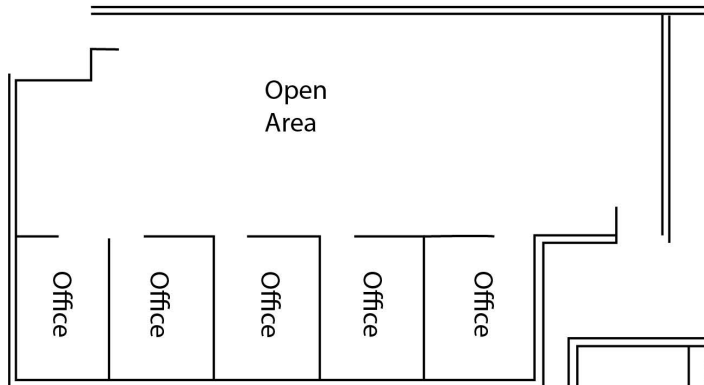
975 Carpenter Rd NE, Lacey, WA 98516

LEASE

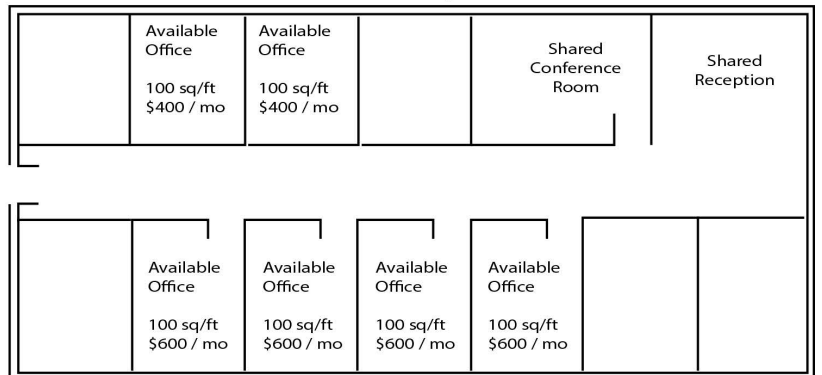
STE 105 1,638 sq. ft.



STE 106 3,246 sq. ft.



Executive Suites Full Service (Min. one year)



CBCWORLDWIDE.COM

Jason Hearn
360 701 3490
jason.hearn@coldwellbankercommercialdanforth.com



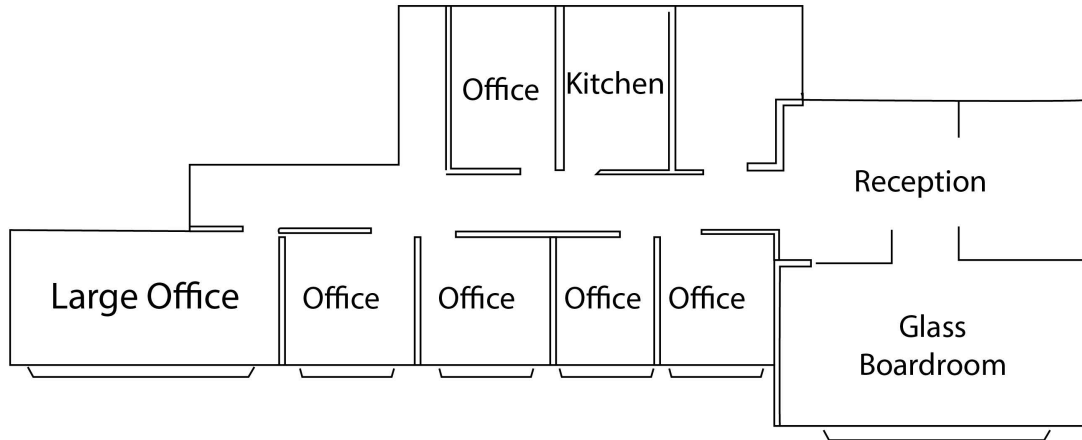


WA FARM BUREAU BUILDING

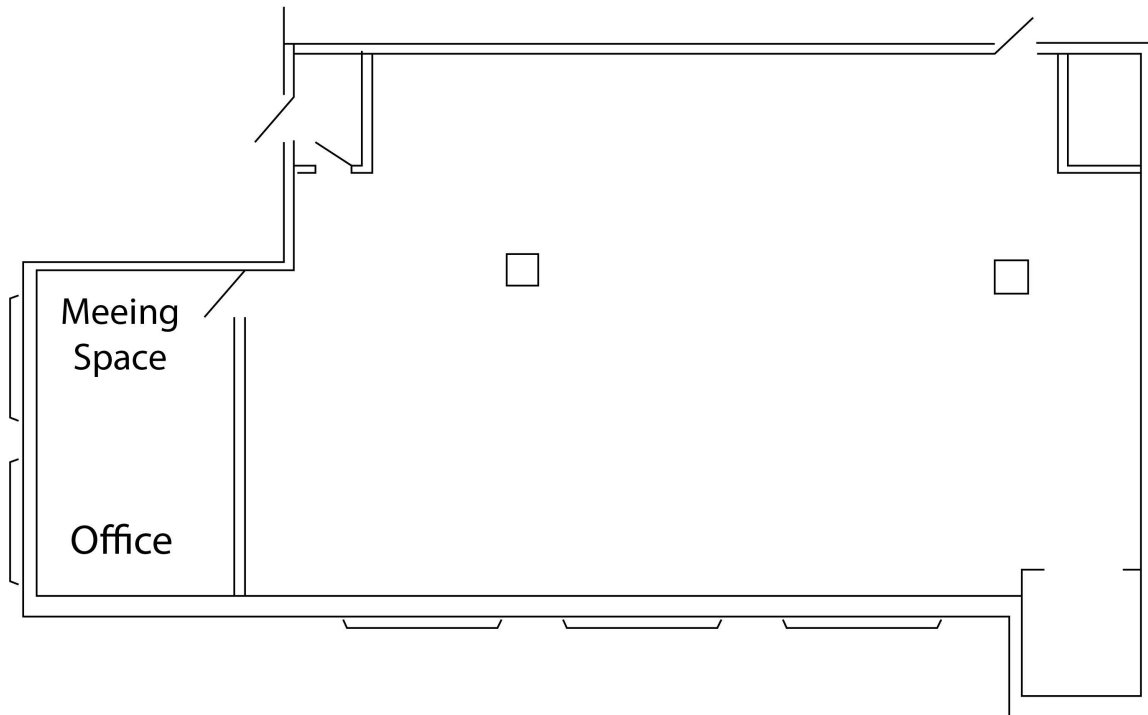
975 Carpenter Rd NE, Lacey, WA 98516

LEASE

STE 203 1,599 sq. ft.



STE 206 2,788 sq. ft.



CBCWORLDWIDE.COM

Jason Hearn
360 701 3490
jason.hearn@coldwellbankercommercialdanforth.com

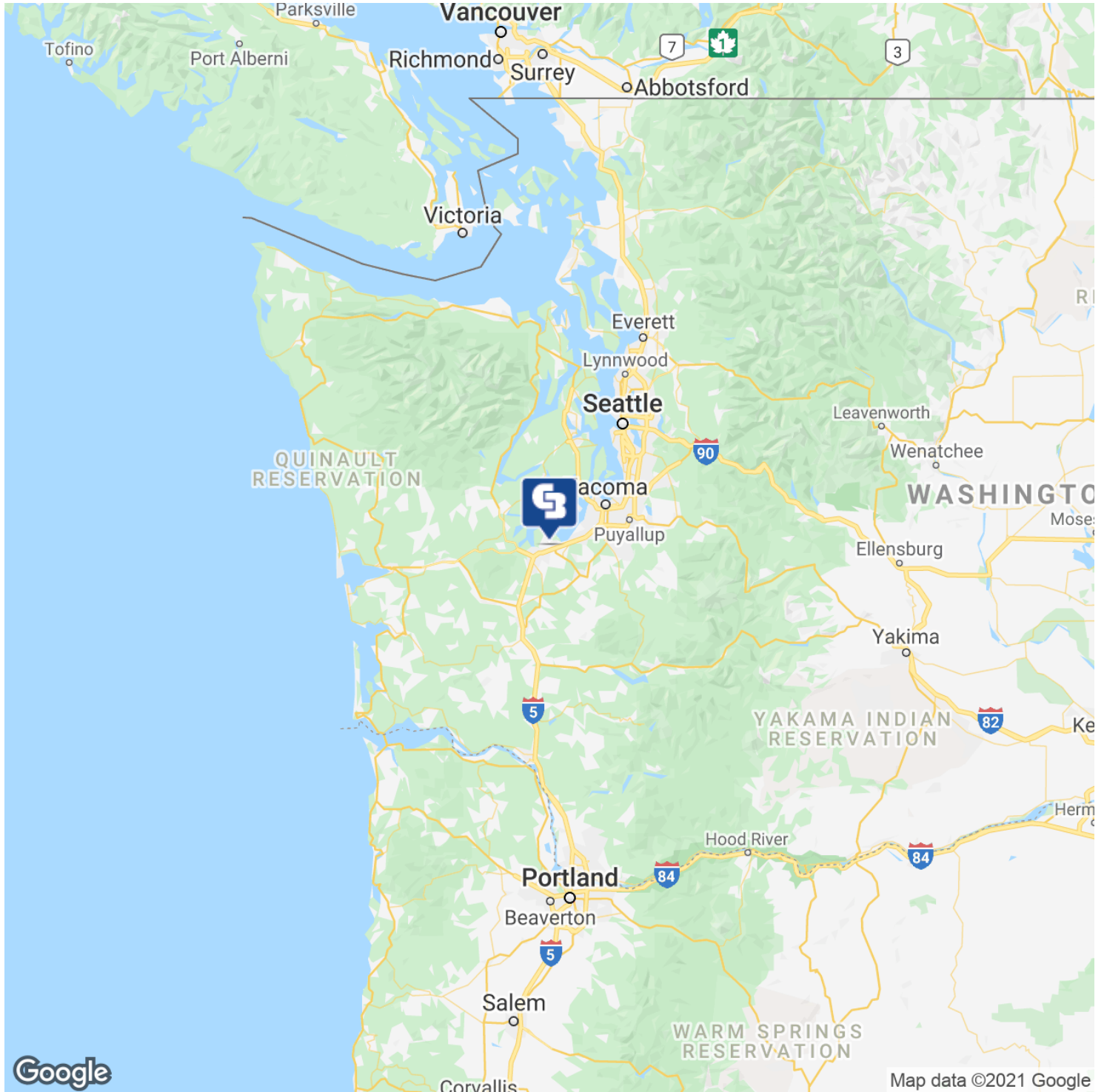




WA FARM BUREAU BUILDING

975 Carpenter Rd NE, Lacey, WA 98516

LEASE



CBCWORLDWIDE.COM

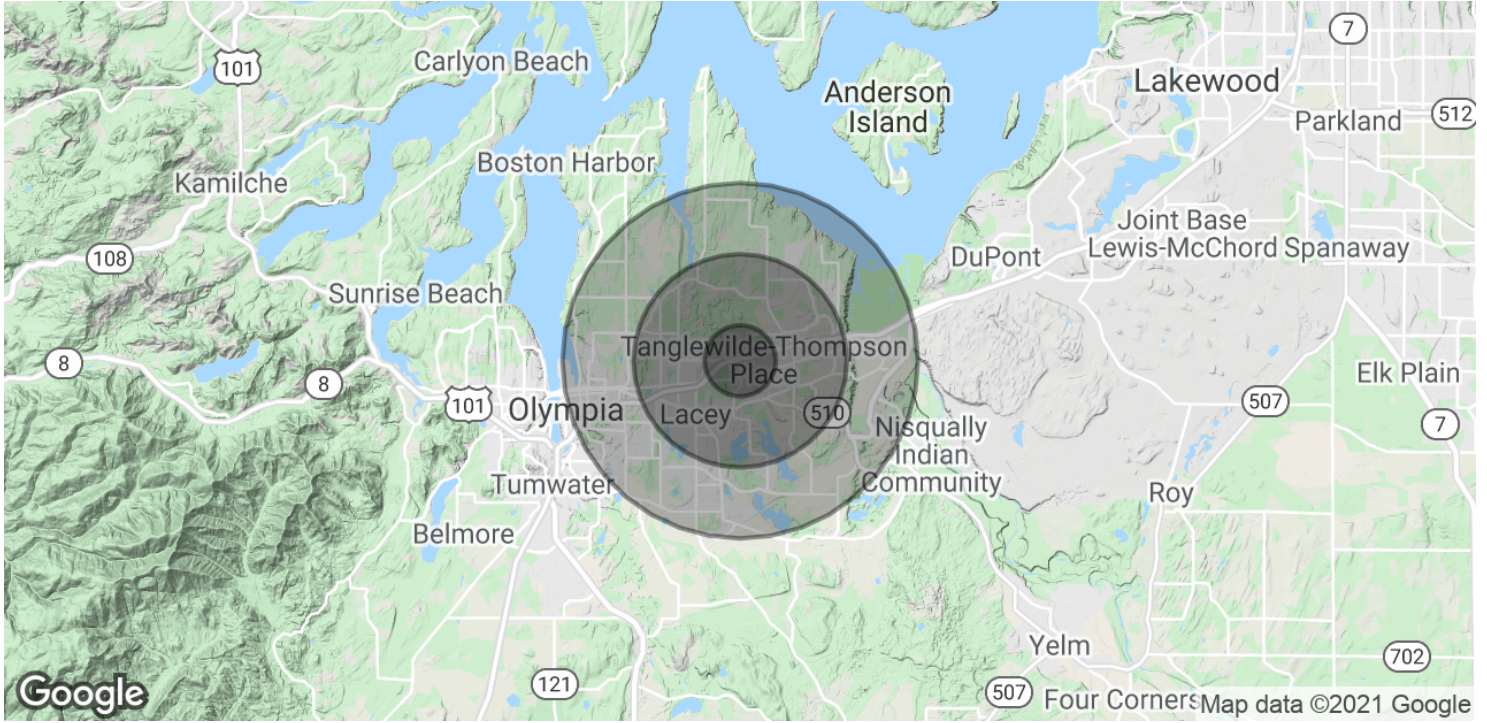
Jason Hearn
 360 701 3490
 jason.hearn@coldwellbankercommercialdanforth.com





WA FARM BUREAU BUILDING

975 Carpenter Rd NE, Lacey, WA 98516



POPULATION	1 MILE	3 MILES	5 MILES
Total Population	4,846	48,119	123,598
Average age	34.7	36.7	38.3
Average age (Male)	34.3	36.3	37.3
Average age (Female)	35.5	37.5	39.1
HOUSEHOLDS & INCOME	1 MILE	3 MILES	5 MILES
Total households	2,113	20,263	50,981
# of persons per HH	2.3	2.4	2.4
Average HH income	\$54,139	\$65,281	\$70,838
Average house value	\$222,174	\$252,997	\$267,811

* Demographic data derived from 2010 US Census

CBCWORLDWIDE.COM

Jason Hearn
 360 701 3490
 jason.hearn@coldwellbankercommercialdanforth.com

