

NW Georgia Rail Served
Industrial Site
108.468 Acres
Ranger, Georgia

SITE

108.468
Acres

Former Allied
Universal
Corporation
Facility

PITTMAN RD NE



61

US HWY 411

200 ACRES



Poultry Food
Processing Facility
Under Construction

NW Georgia Rail Served
Industrial Site
108.468 Acres

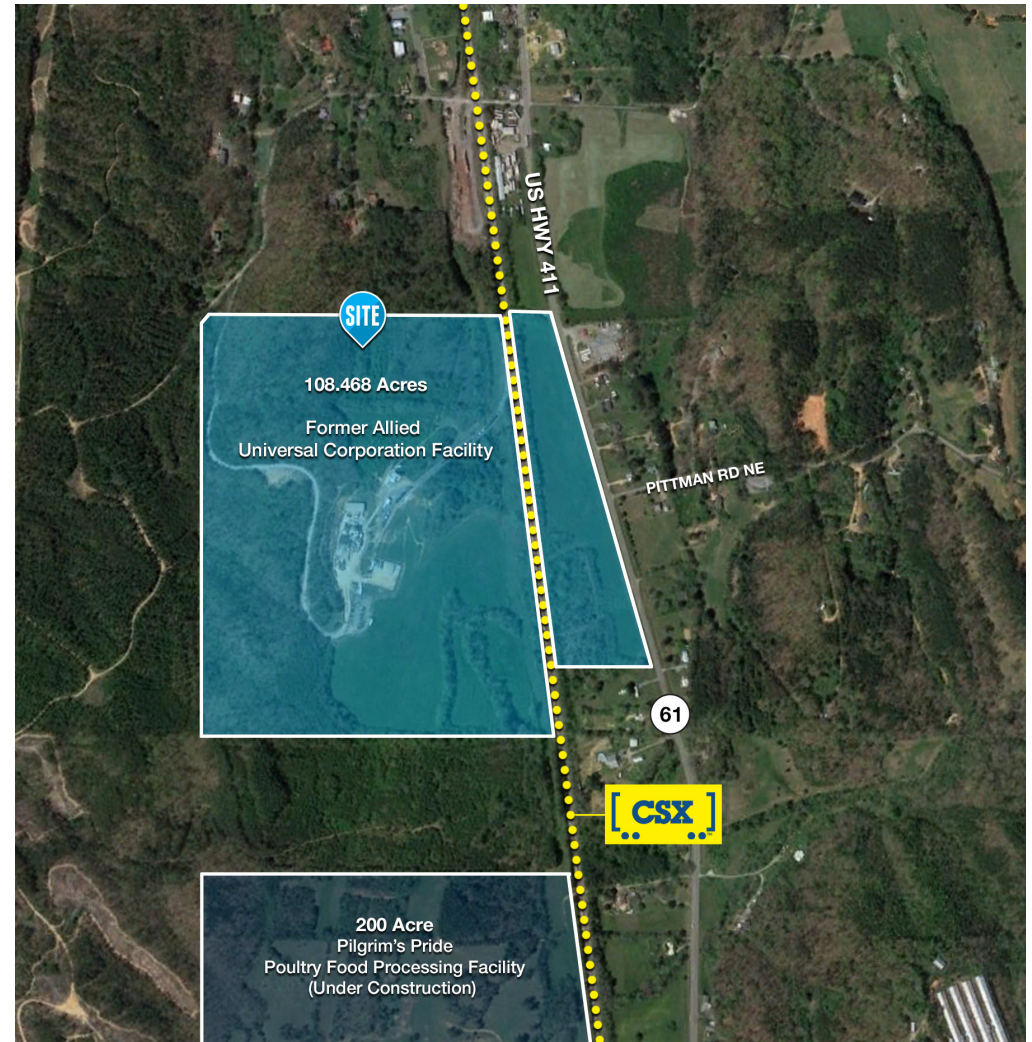
Property Summary

1405 Possum Hollow Rd SE

Ranger, Georgia 30734

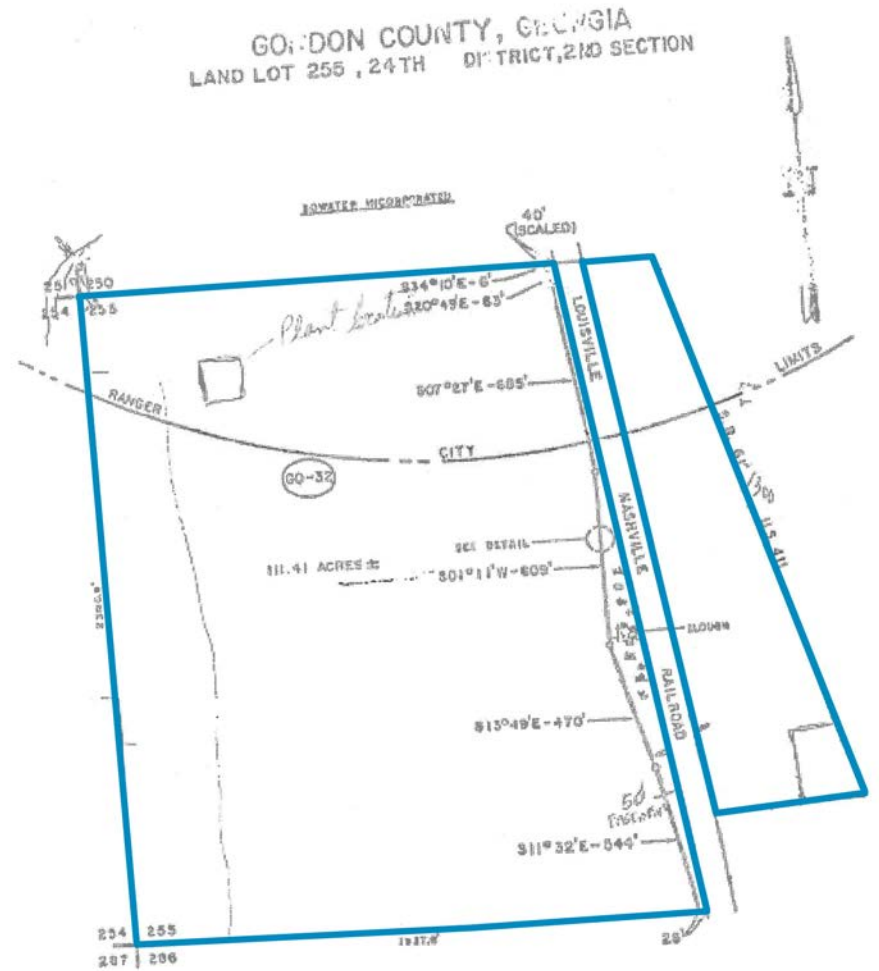
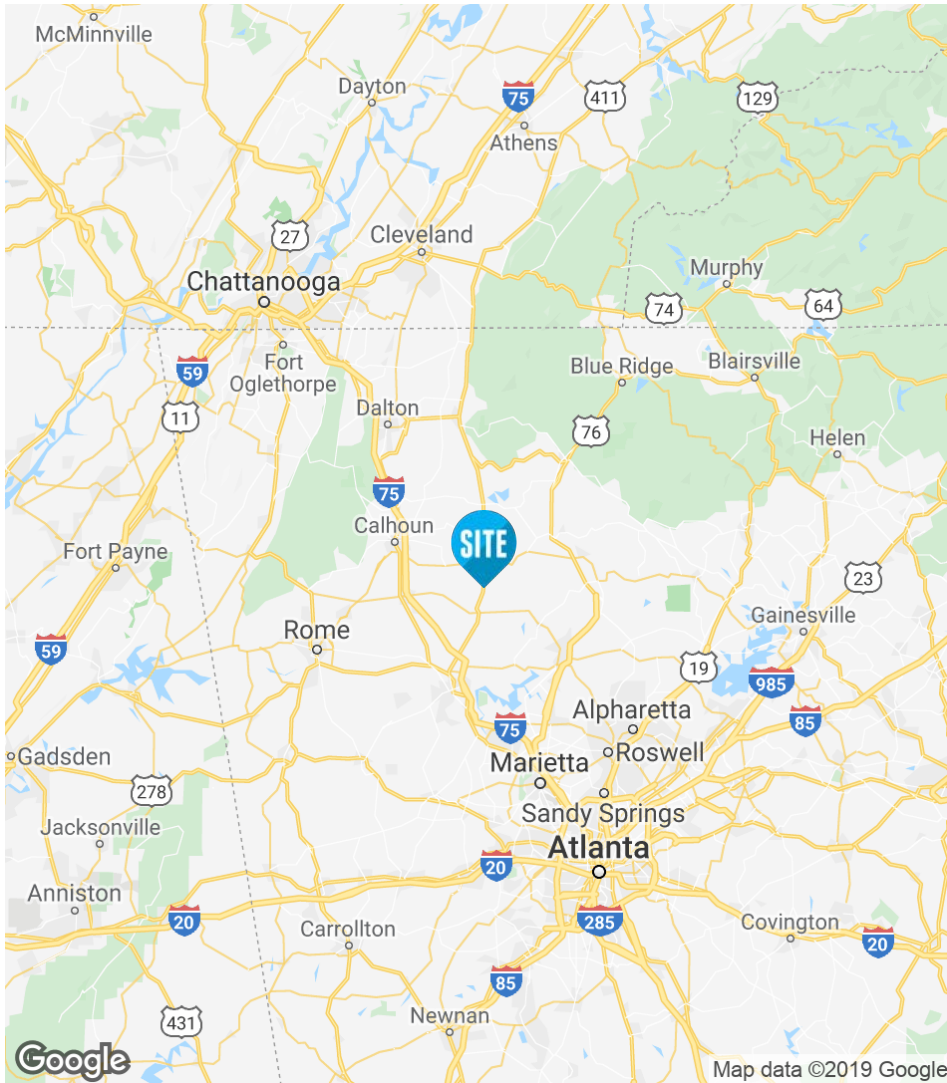
Property Features

- 108.468 Acres Available
- Gordon County Tax Parcel #117-071
- Zoned I-5 (Industrial)
- Former Allied Universal Corp facility
- Existing Rail Spur served by CSX Rail Line via the Appalachian Regional Intermodal Portal (30 miles north of site)
- Appalachian Regional Intermodal Portal offers exclusive CSX service on a direct, 388-mile rail route to/from the Georgia Ports Authority's Garden City Terminal in Savannah, Georgia
- 14 miles north of Toyo Tires manufacturing plant in Cartersville
- Site is adjacent to Pilgrim's Pride Corp's 200-acre poultry food processing facility (under construction)
- (2) 4" water wells on site producing approximately 200,000 gallons/day
- 2 tank containment areas
- Primary Atlanta Natural Gas line



NW Georgia Rail Served
Industrial Site
108.468 Acres

Location Map/Survey



Area Aerial

NW Georgia Rail Served
Industrial Site
108.468 Acres

