

16097 N 82ND ST

Scottsdale, AZ 85260

MULTI-TENANT INDUSTRIAL/OFFICE SPACES - AVAILABLE FOR LEASE



Matt Zaccardi

M: 480.966.7625

D: 602.561.1339

mzaccardi@cpiaz.com



COMMERCIAL PROPERTIES INC.

Locally Owned. Globally Connected. CORFAC International

TEMPE: 2323 W. University Drive, Tempe, AZ 85281 | 480.966.2301
SCOTTSDALE: 8777 N. Gainey Center Dr., Suite 245, Scottsdale, AZ 85258 | www.cpiaz.com



SUITE 1 (INDUSTRIAL)

±2,500 SF

\$1.00 NNN/MO

LAYOUT INCLUDES

- RECEPTION
- 2 OFFICES
- BULL PEN
- ADMIN AREA
- DATA/STORAGE CLOSET
- 2 RESTROOMS
- WAREHOUSE SPACE WITH MEZZANINE

SUITE 2 (OFFICE)

±1,000 SF (±3,500 SF MAX CONTIGUOUS)

\$16.00 MG/YR

LAYOUT INCLUDES

- RECEPTION AREA
- OPEN OFFICE
- RESTROOM

PROPERTY OVERVIEW



16097 N 82nd St
Scottsdale, AZ 85260



PARKING
4.28/1,000 SF



TENANCY
Multi-Tenant



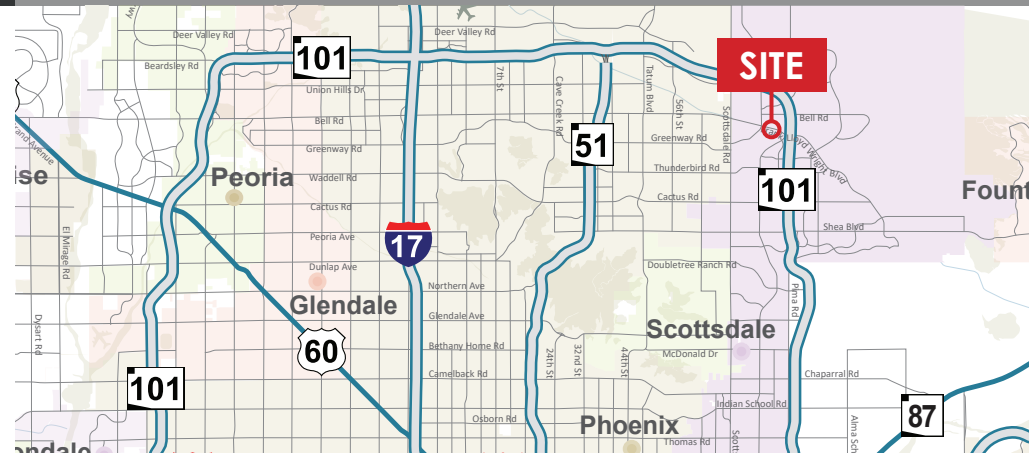
CONSTRUCTION
Built in 1998



SUITE USE
Industrial/Office



ZONING
I-P



The information contained herein has been obtained from various sources. We have no reason to doubt its accuracy; however, J & J Commercial Properties, Inc. has not verified such information and makes no guarantee, warranty or representation about such information. The prospective buyer or lessee should independently verify all dimensions, specifications, floor plans, and all information prior to the lease or purchase of the property. All offerings are subject to prior sale, lease, or withdrawal from the market without prior notice. Effective 03 24 20



COMMERCIAL PROPERTIES INC.

Locally Owned. Globally Connected. CRFAC International

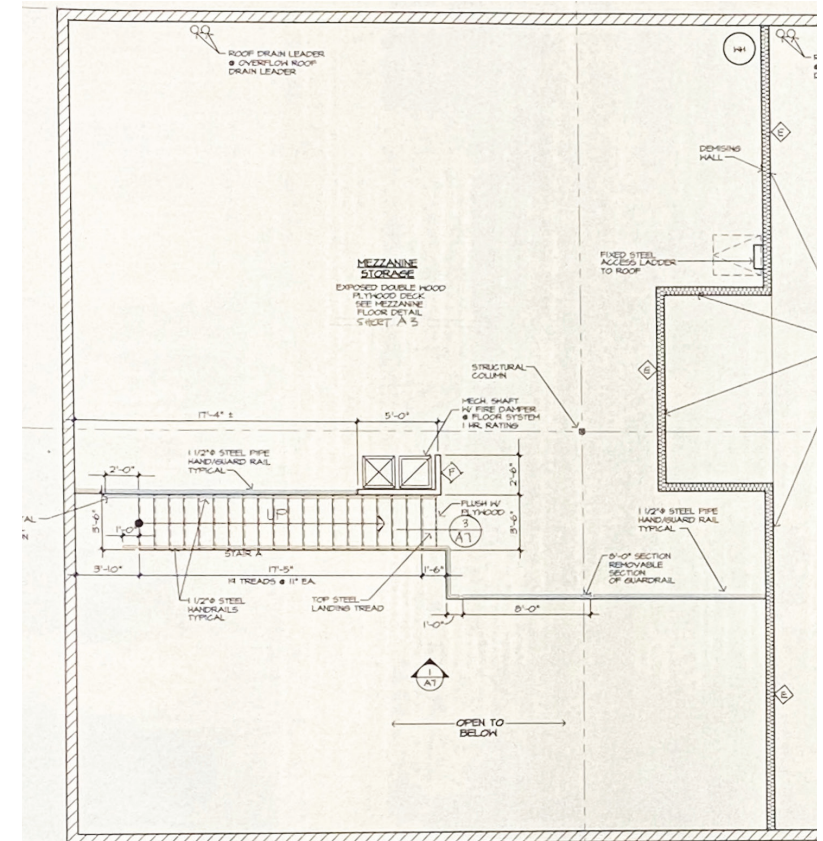
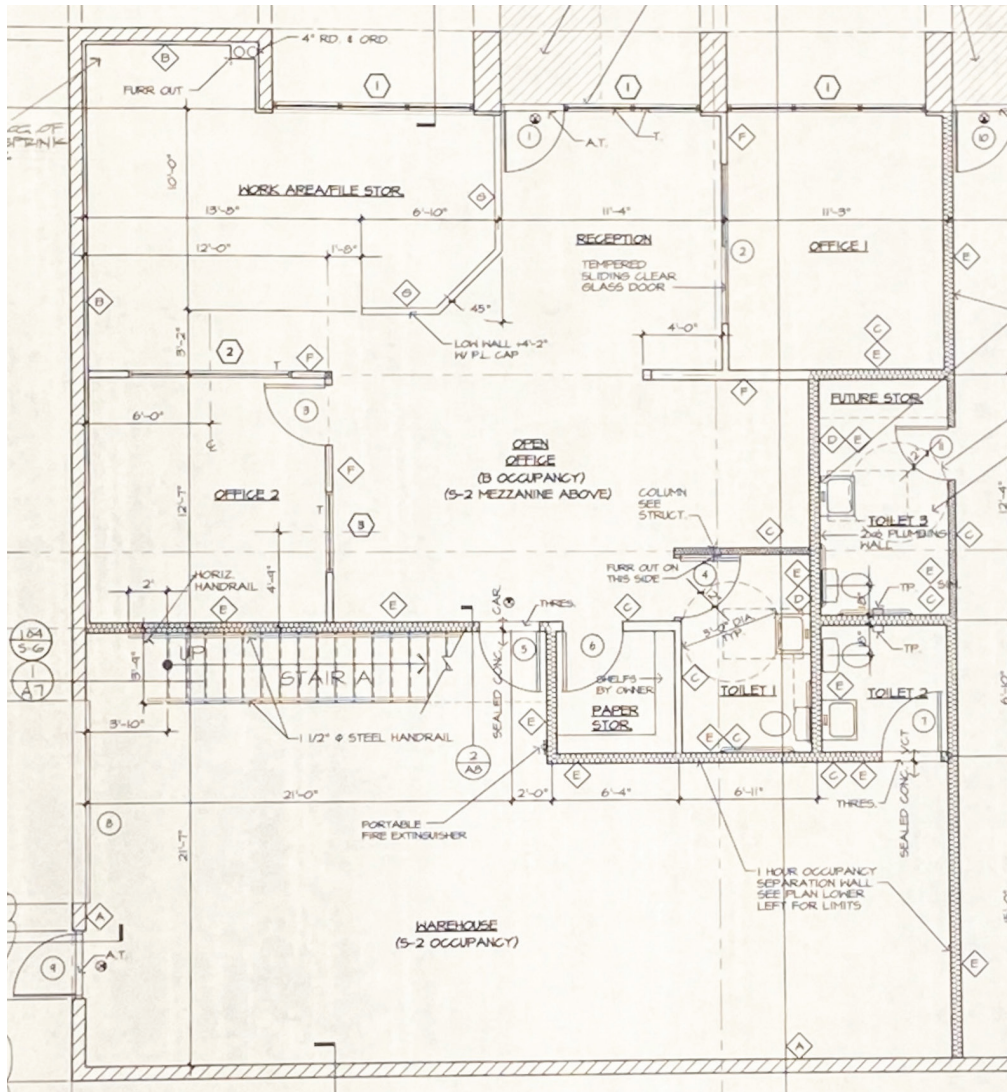
Matt Zaccardi

M: 480.966.7625

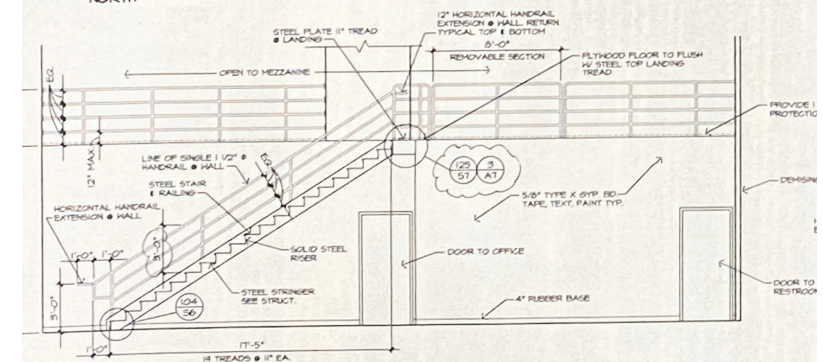
D: 602.561.1339

mzaccardi@cpiaz.com

SUITE 1
±2,500 SF



WEST MEZZANINE FLOOR PLAN
 NORTH SCALE: 1/4" = 1'-0"



16097 N 82ND ST

● SUITE 2
±1,000 SF (±3,500 SF MAX CONT.)

