

For Sale

## Multi-Family Land

List Price: \$325,000



## Rapid City Multi-Family Land

2015 N Plaza Drive, Rapid City, SD 57702

### Property Features

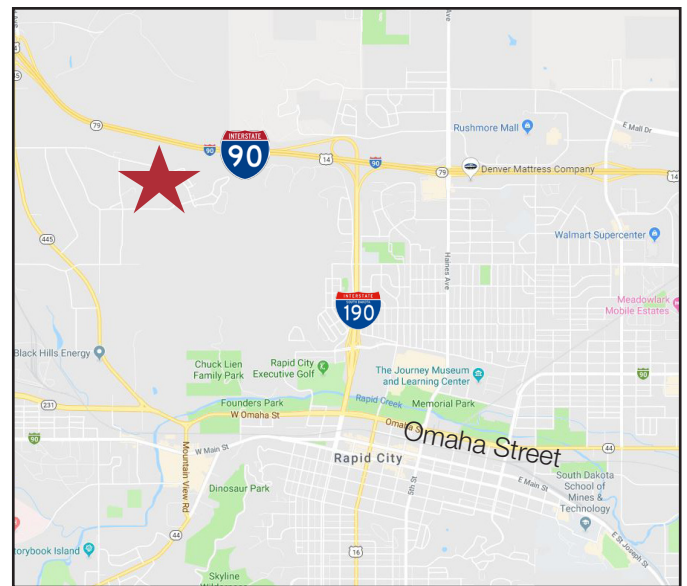
- Lot size: 1.43 acres (62,290 sq. ft.)
- Zoning: Commercial - multi-family apartment allowed under this zoning (up to 39 units)
- City utilities at or near lot
- Borders golf course
- Equity parties are welcome, contact broker for details
- **Includes all professional engineering and design. Entire 28 unit 2 bed/2 bath project is ready for final building permit!**
- Owner is a licensed real estate agent in South Dakota

### Pricing

- List price: \$325,000 (\$5.22/ sq. ft.)
- 2018 Real Estate Taxes: \$2,162.76

### Location

- Located in the northwest part of Rapid City, just west of the I-90 & I-190
- Area neighbors include: Black Hills Federal Credit Union, Coca-Cola Bottling Company, Fountain Springs Golf Course, Golden West Technologies, Fountain Springs Health Care



**Marcus Mahlen, CCIM**

+1 605 444 7116 direct

+1 605 228 9744 mobile

mmahlen@naisiouxfalls.com

NO WARRANTY OR REPRESENTATION, EXPRESS OR IMPLIED, IS MADE AS TO THE ACCURACY OF THE INFORMATION CONTAINED HEREIN, AND THE SAME IS SUBMITTED SUBJECT TO ERRORS, OMISSIONS, CHANGE OF PRICE, RENTAL OR OTHER CONDITIONS, PRIOR SALE, LEASE OR FINANCING, OR WITHDRAWAL WITHOUT NOTICE, AND OF ANY SPECIAL LISTING CONDITIONS IMPOSED BY OUR PRINCIPALS NO WARRANTIES OR REPRESENTATIONS ARE MADE AS TO THE CONDITION OF THE PROPERTY OR ANY HAZARDS CONTAINED THEREIN ARE ANY TO BE IMPLIED.

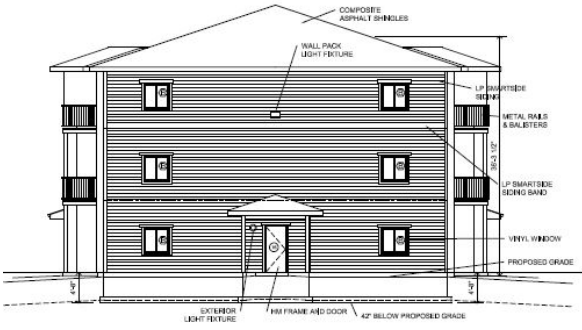
2500 W. 49th Street, Suite 100

Sioux Falls SD 57105

+1 605 357 7100

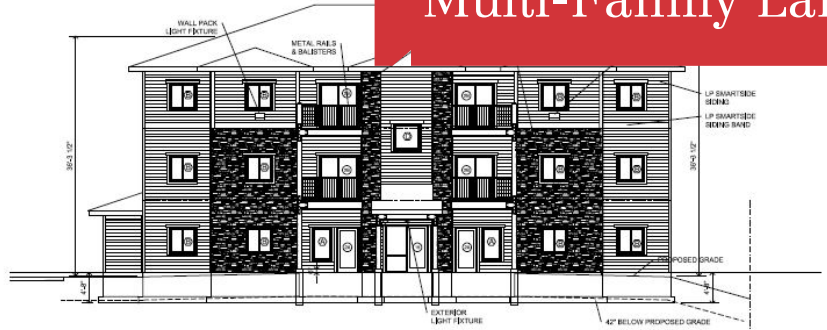
[naisiouxfalls.com](http://naisiouxfalls.com)

For Sale  
**Multi-Family Land**



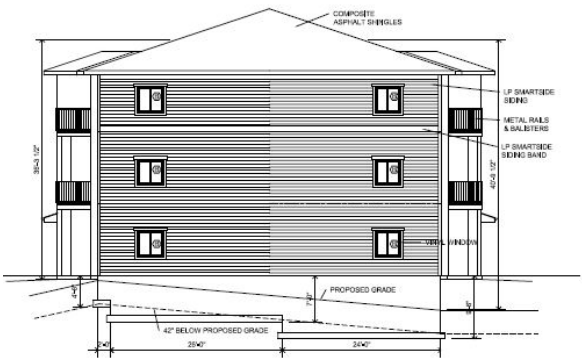
**BLDG A - 12 UNITS EAST (SIDE) ELEVATION**

SCALE: 1/8" = 1'-0"



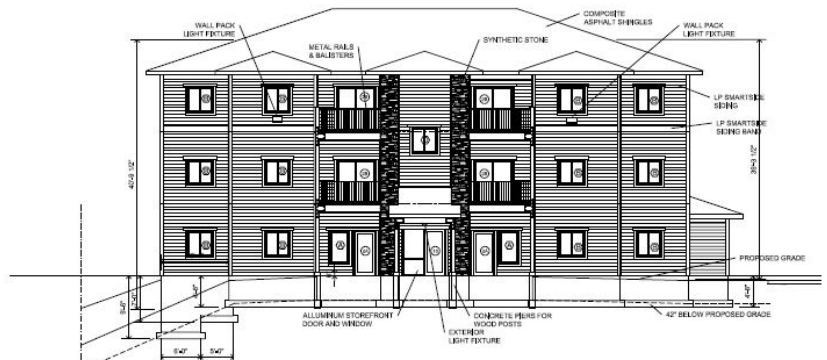
**BLDG A - 12 UNITS NORTH (FRONT) ELEVATION**

SCALE: 1/8" = 1'-0"



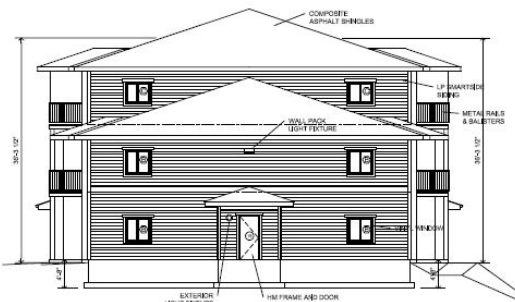
**BLDG A - 12 UNITS WEST (SIDE) ELEVATION**

SCALE: 1/8" = 1'-0"



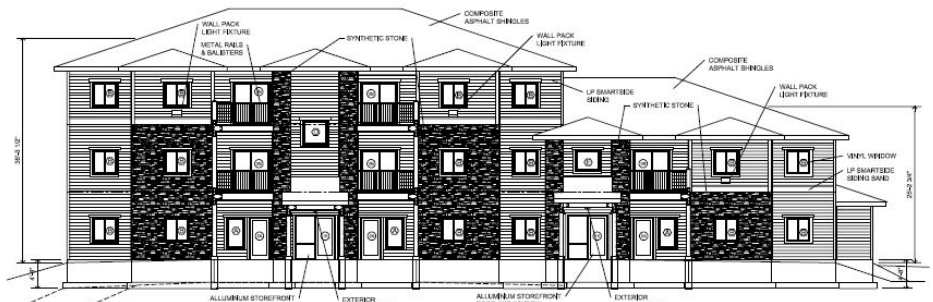
**BLDG A - 12 UNITS SOUTH (REAR) ELEVATION**

SCALE: 1/8" = 1'-0"



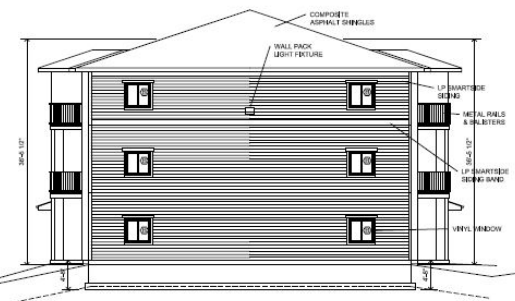
**BLDG B - 16 UNITS NORTH (SIDE) ELEVATION**

SCALE: 1/8" = 1'-0"



**BLDG B - 16 UNITS EAST (FRONT) ELEVATION**

SCALE: 1/8" = 1'-0"



**BLDG B - 16 UNITS SOUTH (SIDE) ELEVATION**

SCALE: 1/8" = 1'-0"



**BLDG B - 16 UNITS WEST (REAR) ELEVATION**

SCALE: 1/8" = 1'-0"



For Sale  
Multi-Family Land



Deadwood Avenue

