

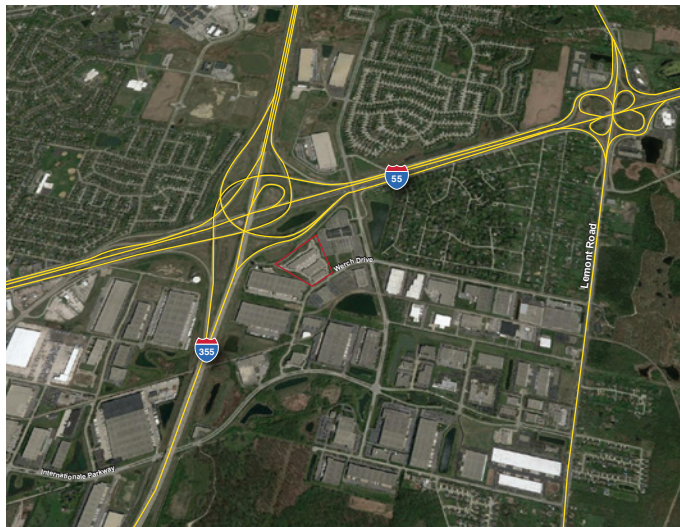


HIGHLIGHTS:

Woodridge Commerce Centre is a three (3) building industrial center. These multi-tenant buildings are located right on I-55 with interstate exposure. The site offers ample parking with a mix of private and shared loading.

AVAILABLE:

Suite	Total SF	Office SF	Loading	Modified Gross Rate
106-107	8,999	1,536 - office 4,078 - showroom	2 Docks 2 DID's	Subject to Offer
209-212 Available 3/1/2017	15,208	2,262	2 Docks 1 DID	Subject to Offer
301-302 Available 1/1/2017	6,447	5,947	1 DID	Subject to Offer



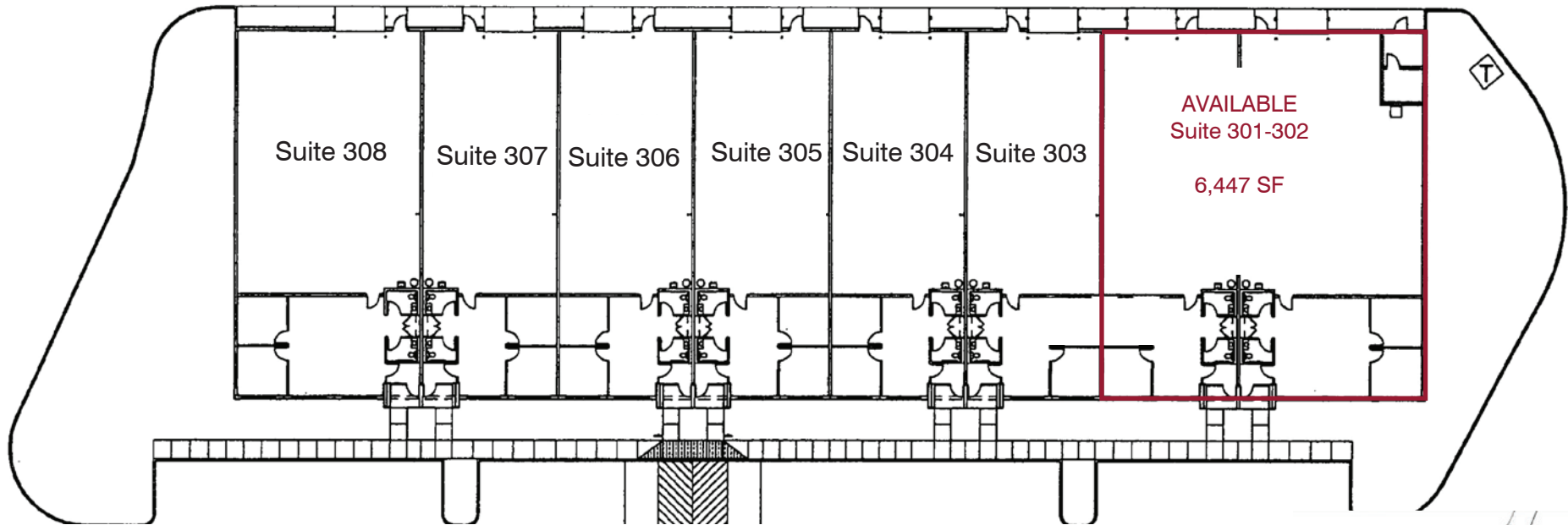
BUILDING SPECIFICATIONS:

Building 1 - 10216:	72,820 S.F.
Building 2 - 10210:	49,913 S.F.
Building 3 - 10204:	25,917 S.F.
Clear Height:	16' - 20'
Loading:	Private & Shared Mixed DID's (12' x 12')
Power:	100 Amp / 208 Volt
Parking:	3:1,000
Year Built:	2005

owned by:



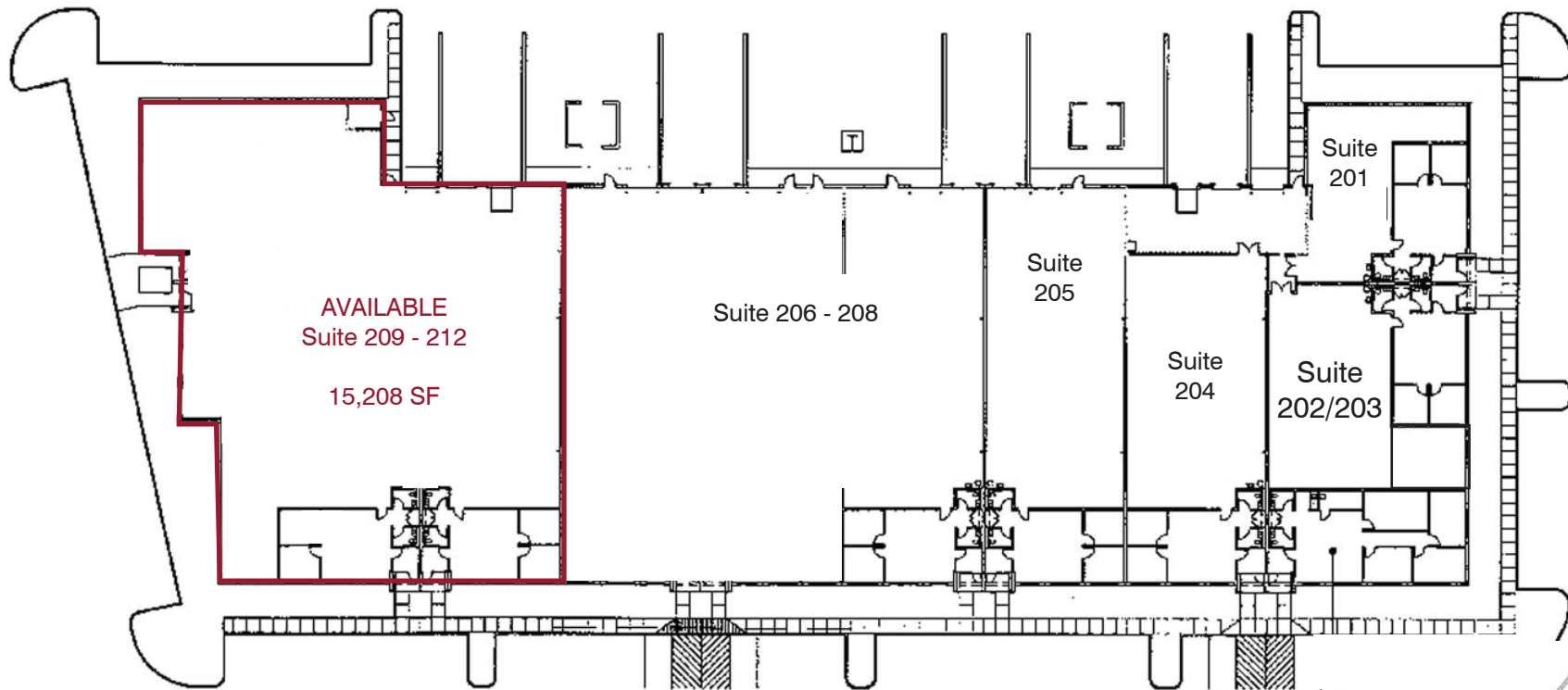
Building 3 - 10204 Werch Drive
Total Building - 25,917 Square Feet
Ceiling Height - 16' Clear



owned by:



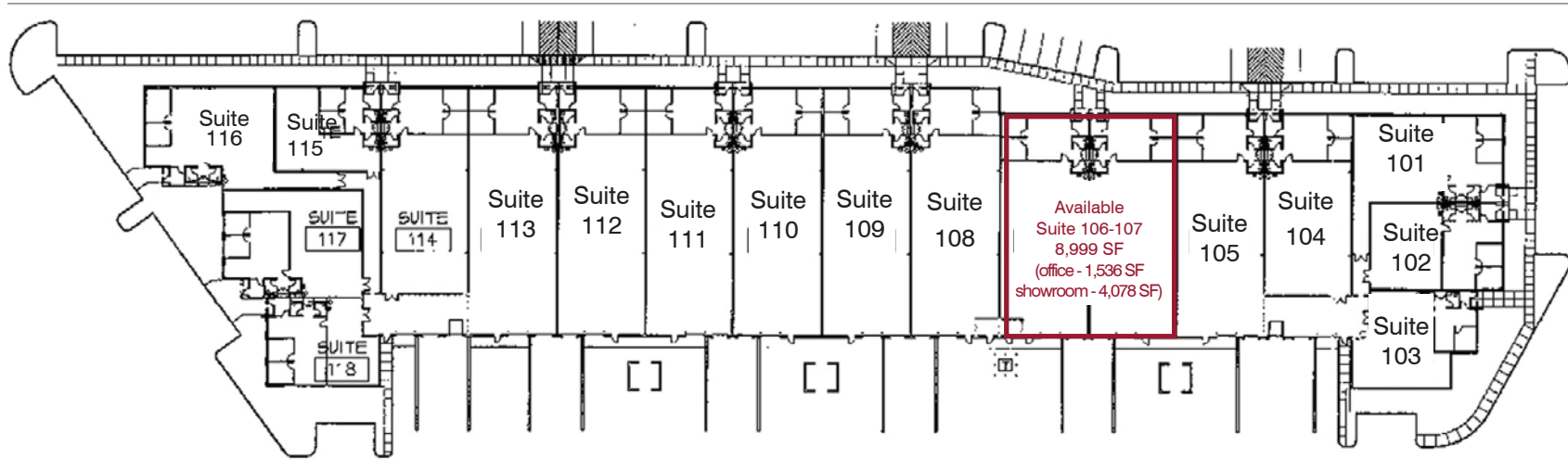
Building 2 - 10210 Werch Drive
Total Building - 49,913 Square Feet
Ceiling Height - 20' Clear



owned by:



Building 1 - 10216 Werch Drive
Total Building: 72,820 Square Feet
Ceiling Height - 20' Clear

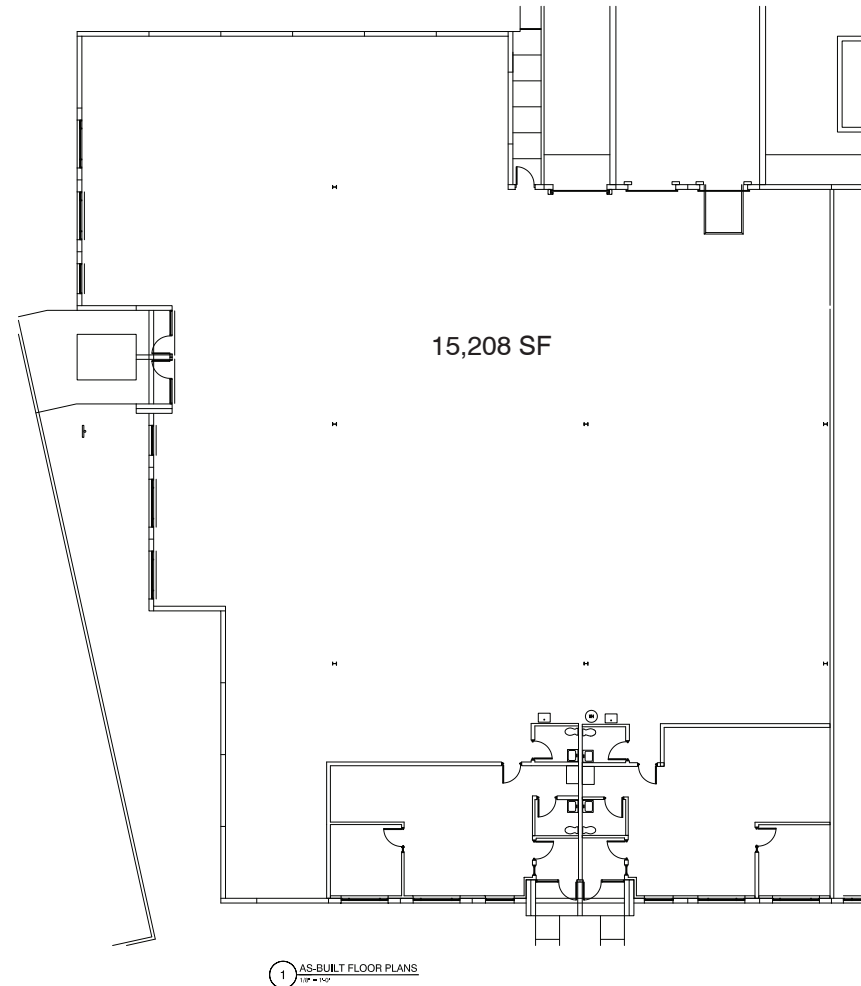


owned by:



Building 2 - 10210 Werch Drive
Total Building: 49,913 Square Feet
Ceiling Height - 20' Clear

SUITE 209-212



owned by:

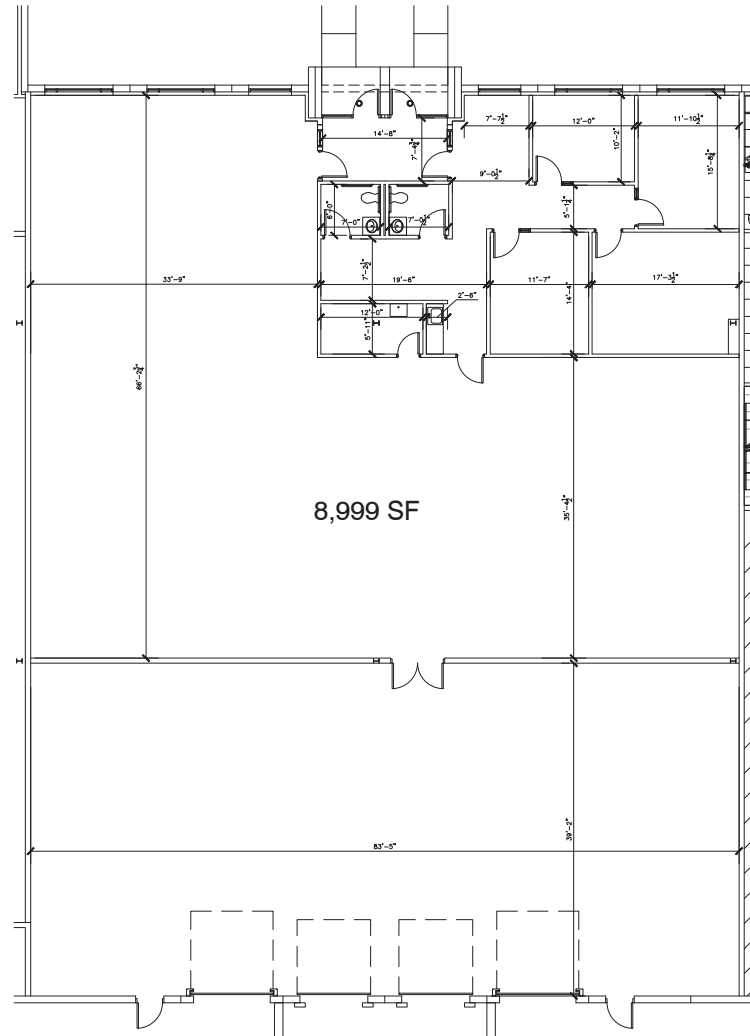


FOR MORE INFORMATION:

CAROLINE DELL
Associate
(773) 355-3035 direct
cdell@lee-associates.com

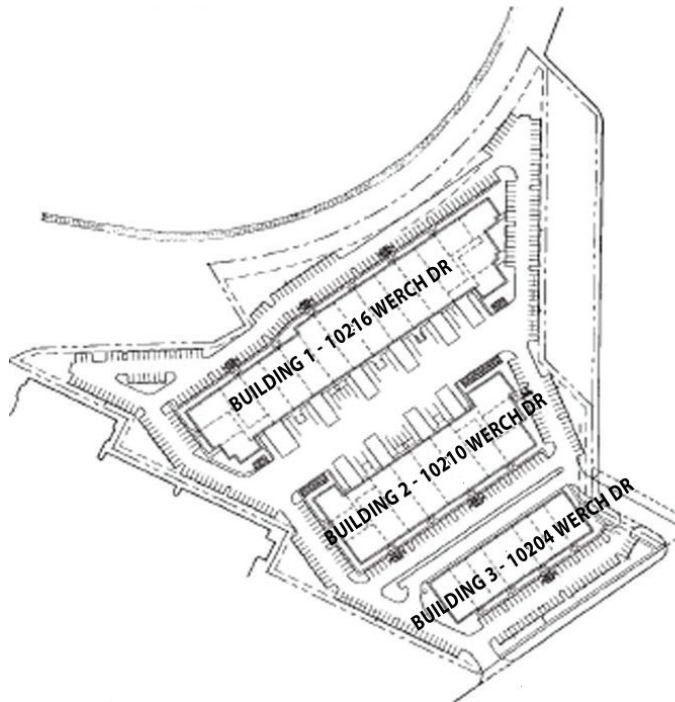
Building 1 - 10216 Werch Drive
Total Building: 72,820 Square Feet
Ceiling Height - 20' Clear

SUITE 106-107



owned by:





owned by:

