

REVISED LEASE RATE - YEAR 1 RATE \$24 FSG

# MOTTMAN BUILDING

307  
3RD AVENUE S  
Seattle, WA 98104

RENT READY SUITES - TAKE A VIRTUAL TOUR



## BUILDING HIGHLIGHTS

Remodeled plug and play Pioneer Square office suites with refinished original wood floors, hard shell ceilings and operable windows. Great local ownership willing to discuss lease flexibility for any contemplated length of term. Ideas are welcome!

Take a tour via the attached link.

- + REVISED LEASE RATE - YEAR 1 Rate \$24 FSG
- + Floor 2: 6,221 RSF Full floor suite
- + Floor 4: 6,180 RSF Full floor suite
- + Floor 5: Contiguous suites: 3,955 RSF
  - Suite 520: 1,714 RSF (Available 4/1/21)
  - Suite 530: 2,241 RSF
- + Exposed timbers and HVAC
- + Seismically upgraded
- + Numerous nearby parking lots and garage options
- + Close proximity to all major transportation options including light rail, train, buses and ferries
- + Extremely fast access to I-90 & I-5
- + Professionally managed by Samis






# FOR LEASE MOTTMAN BUILDING

307  
3RD AVENUE S  
Seattle, WA 98104



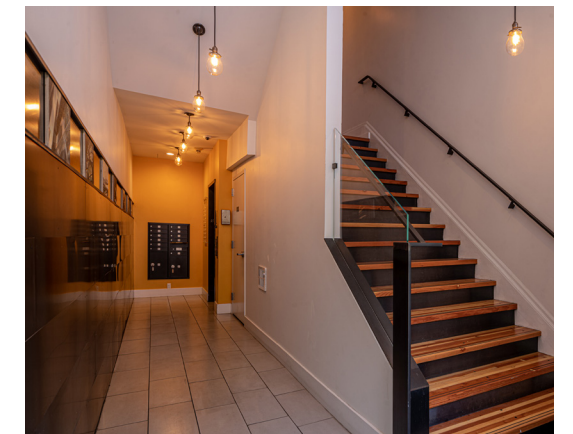
## AVAILABILITY

Suite	Size	Rate	Comments
200 	6,221 RSF	<del>\$34.00/RSF</del> \$24.00/RSF Fully Serviced	Full floor suite with open work area surrounded by 12 offices/conference rooms, kitchen, copy/storage, server room & private restrooms. Refinished hardwood floors, hard shell ceiling, HVAC, excellent natural light and operable windows.
400 	6,180 RSF	<del>\$34.00/RSF</del> \$24.00/RSF Fully Serviced	Full floor suite with open work area, 9 private offices/conference rooms, kitchen, server room, private restrooms, shower and HVAC. Refinished hardwood floors, hard shell ceiling, excellent natural light and operable windows.
520	1,714 RSF	<del>\$34.00/RSF</del> \$24.00/RSF Fully Serviced	Creative space with open work area, conference & 2 private offices and kitchen. Shared 5th floor conference room, kitchen lounge and shower. Available 4/1/21.
530 	2,241 RSF	<del>\$34.00/RSF</del> \$24.00/RSF Fully Serviced	Creative space with open work area, conference, 2 private offices & server room. Shared 5th floor conference room, kitchen lounge and shower. Abundant natural light.
520/530	3,955 RSF	<del>\$34.00/RSF</del> \$24.00/RSF- Fully Serviced	Creative space with open work area, conference, 4 private offices & server room. Abundant natural light. Shared 5th floor conference room, kitchen lounge and shower.

CLICK THE  ICONS ABOVE TO VIEW VIRTUAL TOURS



Full Floor Suite, Floor 2



Renovated Lobby

www.cbre.us/seattle

CBRE



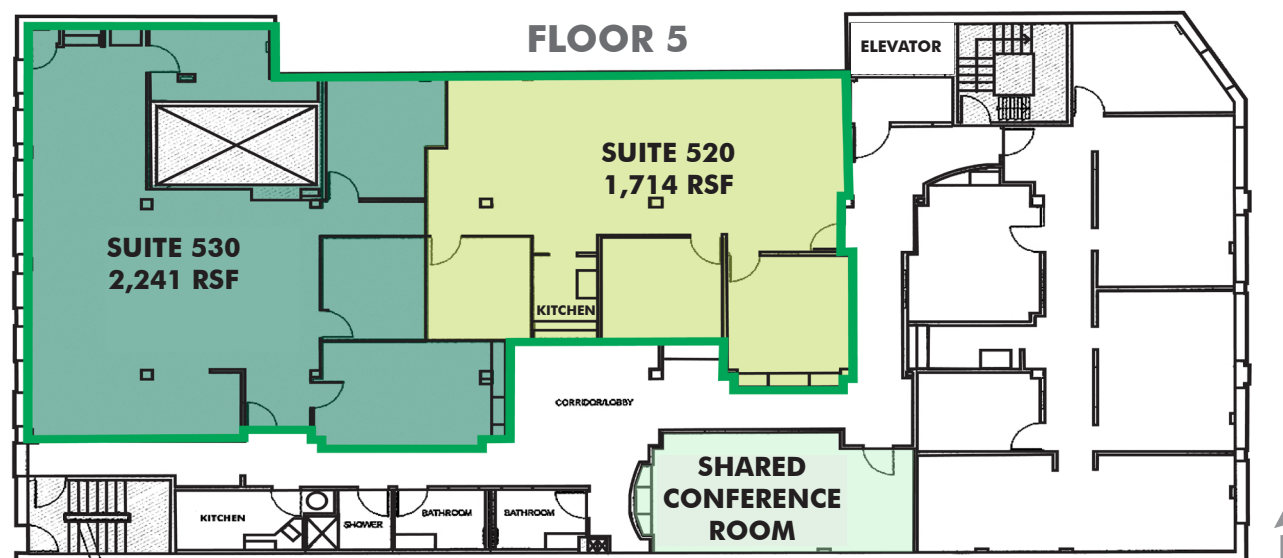
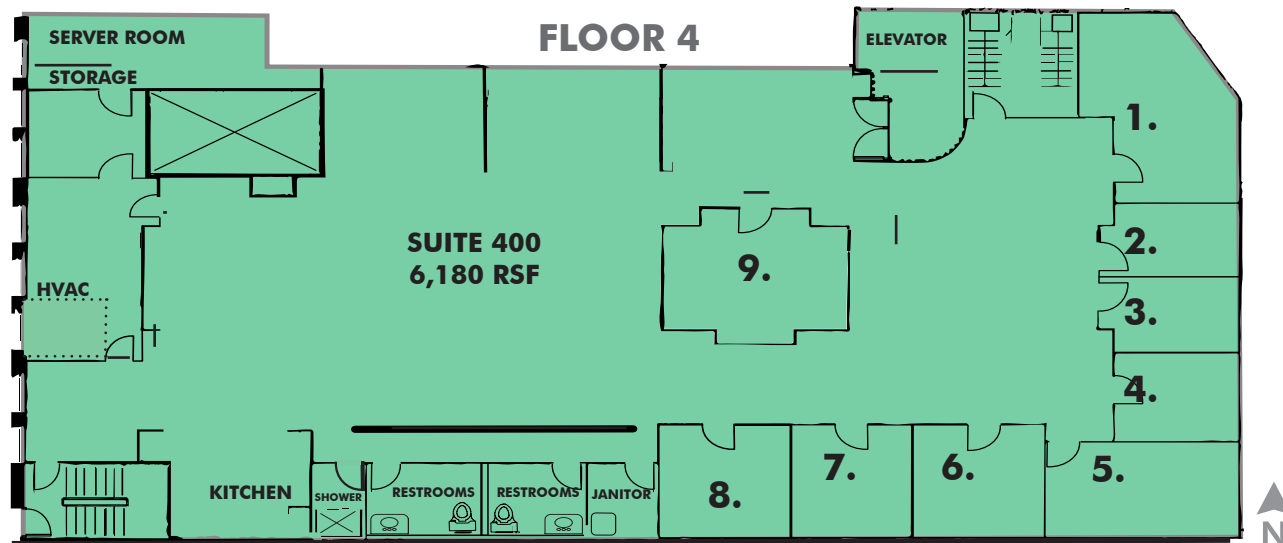
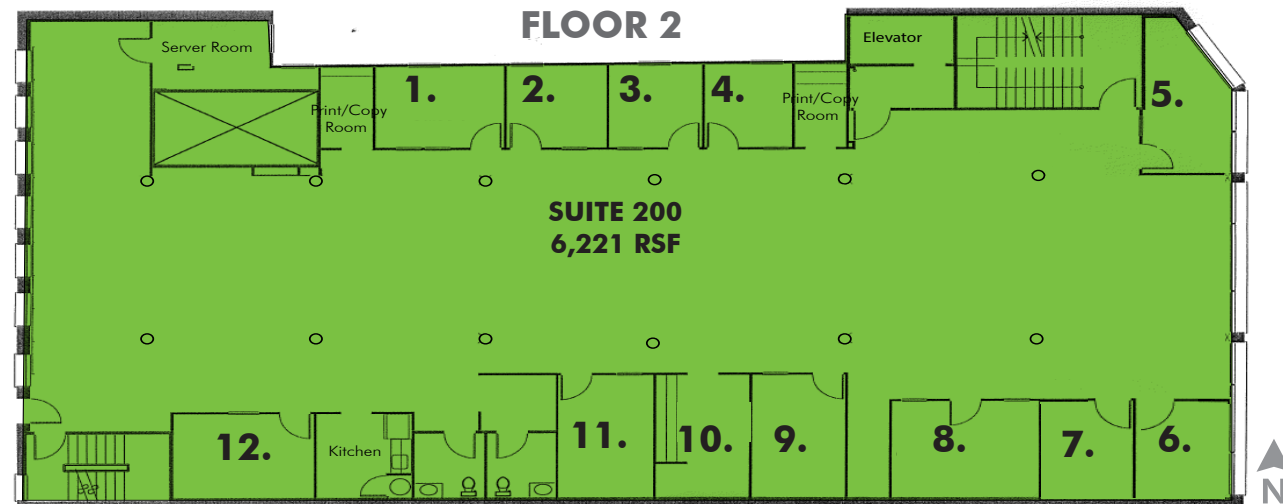
FOR LEASE  
**MOTTMAN BUILDING**

307  
**3RD AVENUE S**  
Seattle, WA 98104

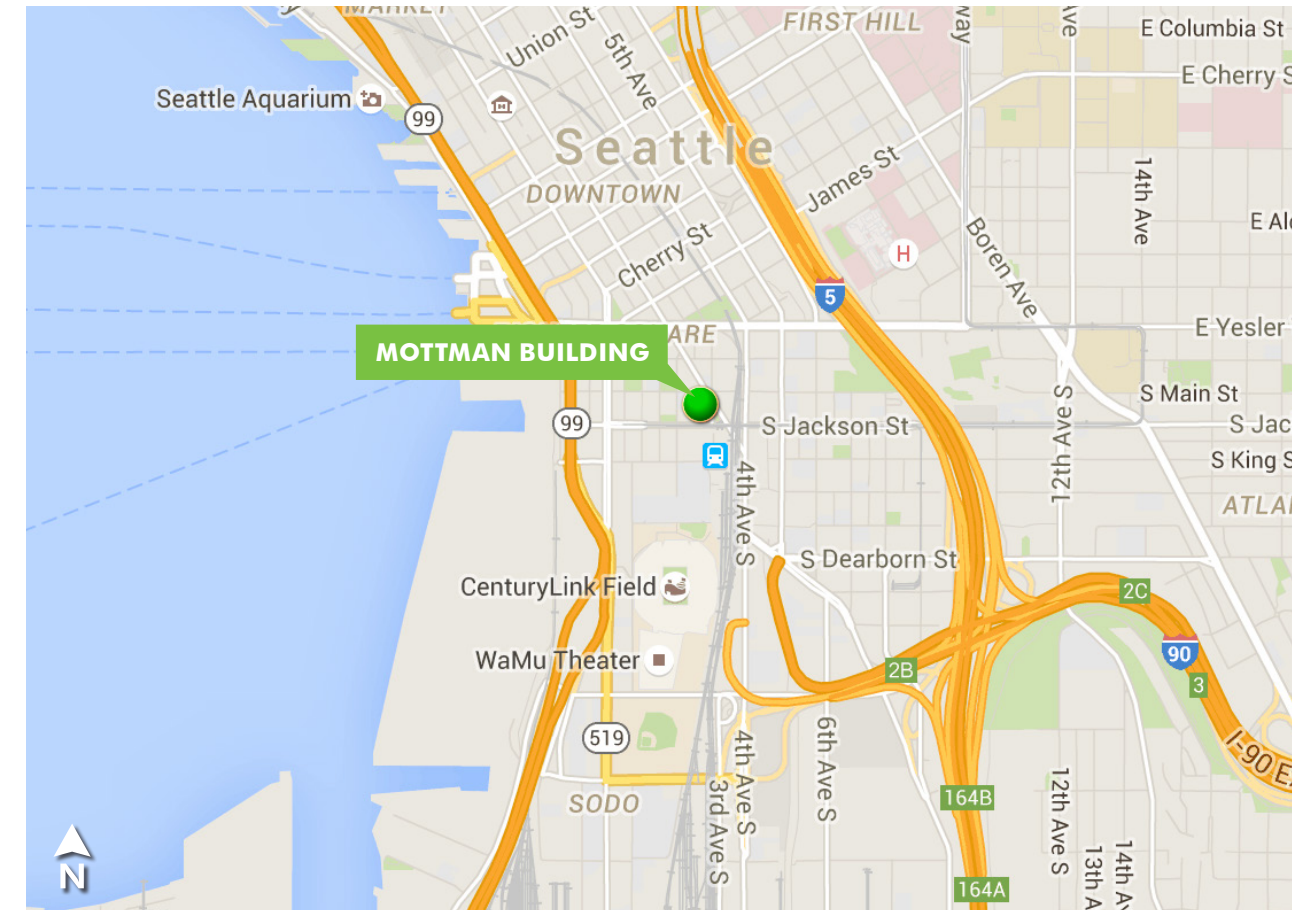
FOR LEASE  
**MOTTMAN BUILDING**

307  
**3RD AVENUE S**  
Seattle, WA 98104

**FLOOR PLANS**



**LOCATION MAP**



**CONTACT US**

**DAN STUTZ**  
+1 206 292 6097  
dan.stutz@cbre.com

**CBRE, INC.**  
1420 5th Avenue, Suite 1700  
Seattle, WA 98101

© 2021 CBRE, Inc. All rights reserved. This information has been obtained from sources believed reliable, but has not been verified for accuracy or completeness. You should conduct a careful, independent investigation of the property and verify all information. Any reliance on this information is solely at your own risk. CBRE and the CBRE logo are service marks of CBRE, Inc. All other marks displayed on this document are the property of their respective owners. Photos herein are the property of their respective owners. Use of these images without the express written consent of the owner is prohibited. KA9-14-21

[www.cbre.us/seattle](http://www.cbre.us/seattle)

