

Clear Lake

FOR SALE

# 3 ACRES ON CORNER WITH TRAFFIC LIGHT

NEC Marina Bay Blvd (FM 2094) at Enterprise Ave  
League City, Texas | Located in South Shore Harbour

KELLY HUTCHINSON | 713 830 2146 | [kelly.hutchinson@colliers.com](mailto:kelly.hutchinson@colliers.com)

SOUTH SHORE  
HARBOUR RESORT  
& CONF CTR

FUTURE  
RESIDENTIAL

ASSISTED  
LIVING

SOUTH SHORE  
FITNESS  
CENTER

REHAB

MARINA BAY DRIVE (FM 2094)



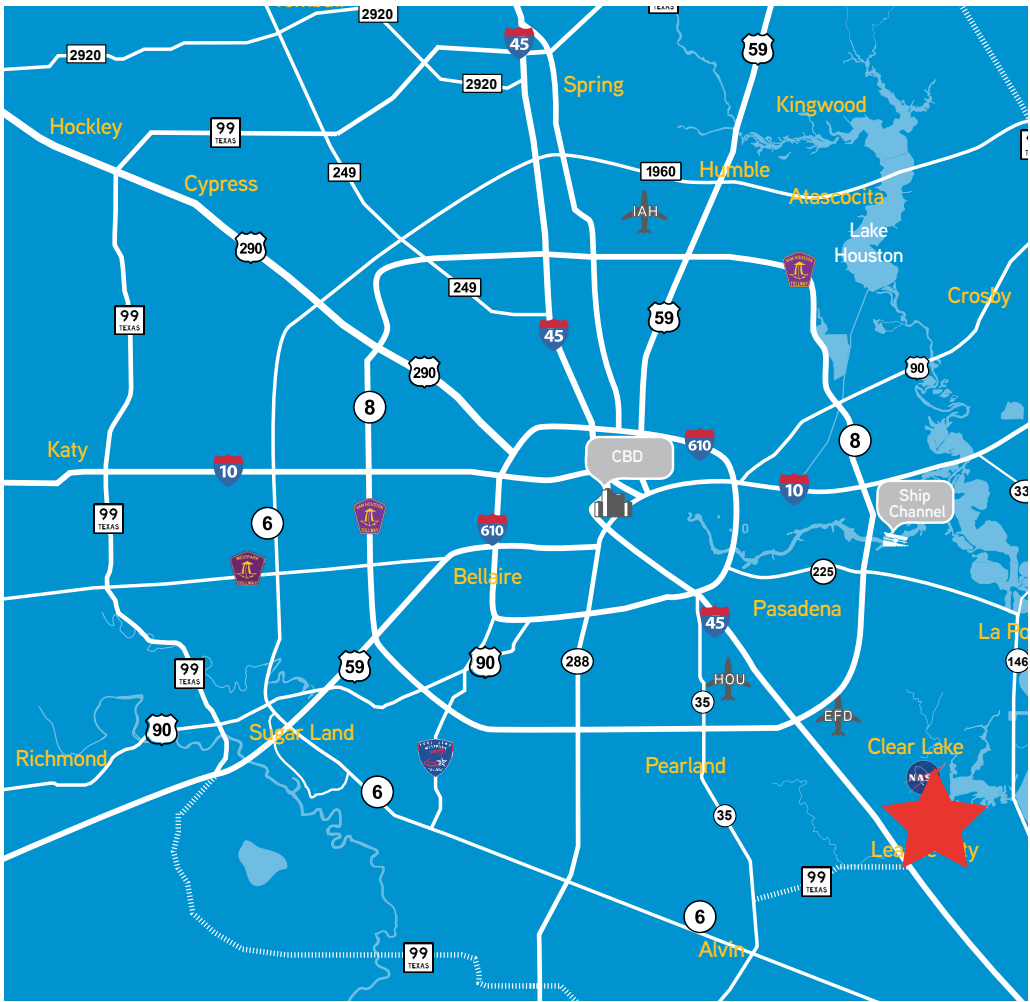
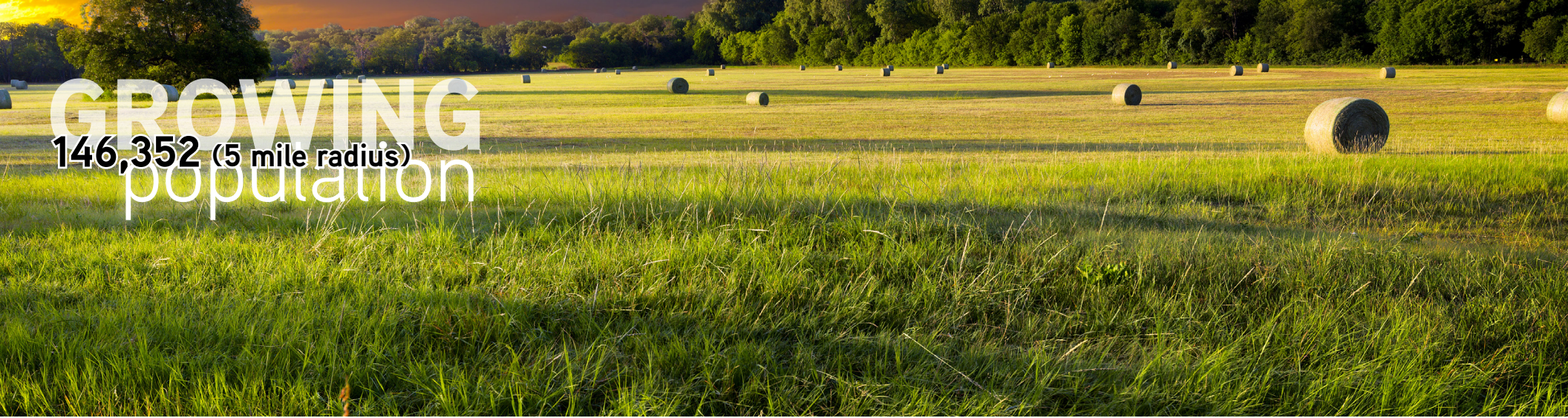






# GROWING

146,352 (5 mile radius)  
population



## Demographics

	1 mile radius	3 mile radius	5 mile radius
<b>TOTAL AVERAGE POPULATION</b>			
2016	8,688	69,731	146,352
<b>TOTAL HOUSEHOLDS</b>			
2016	3,812	28,913	58,516
<b>MEDIAN HOSEOLD INCOME</b>			
2016	\$244,407	\$205,052	\$186,420

## Contact Us

**COLLIERS INTERNATIONAL**  
 1233 W. Loop South, Suite 900  
 Houston, Texas 77027  
 713 222 2111  
[www.colliers.com/texas](http://www.colliers.com/texas)

**Kelly Hutchinson**  
 713 830 2146  
[kelly.hutchinson@colliers.com](mailto:kelly.hutchinson@colliers.com)



This document has been prepared by Colliers International for advertising and general information only. Colliers International makes no guarantees, representations or warranties of any kind, expressed or implied, regarding the information including, but not limited to, warranties of content, accuracy and reliability. Any interested party should undertake their own inquiries as to the accuracy of the information. Colliers International excludes unequivocally all inferred or implied terms, conditions and warranties arising out of this document and excludes all liability for loss and damages arising there from. This publication is the copyrighted property of Colliers International and/or its licensor(s). ©2016. All rights reserved.