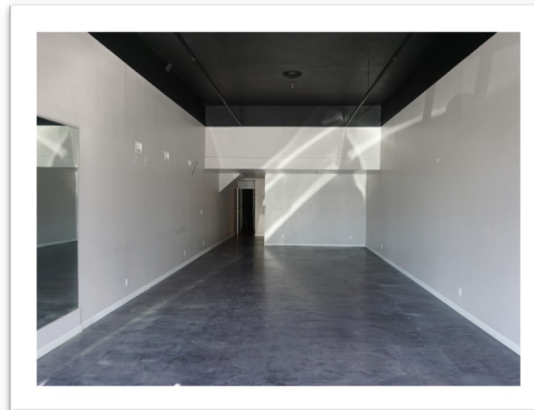
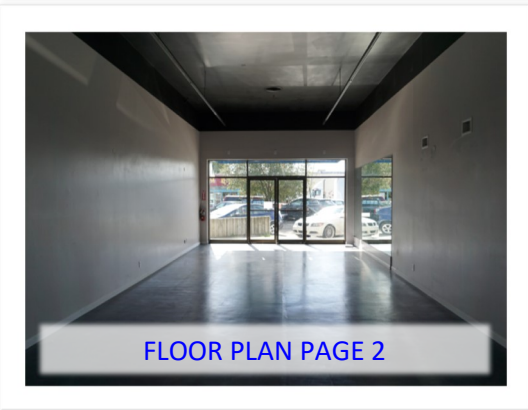
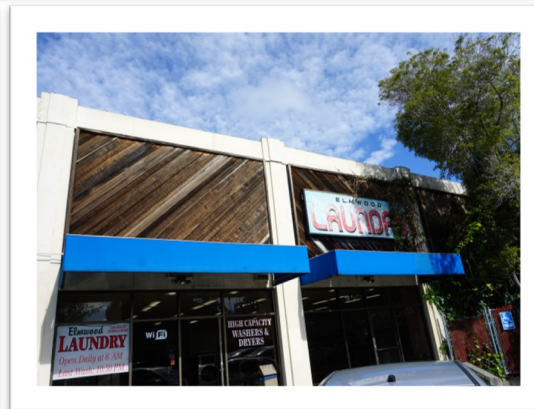
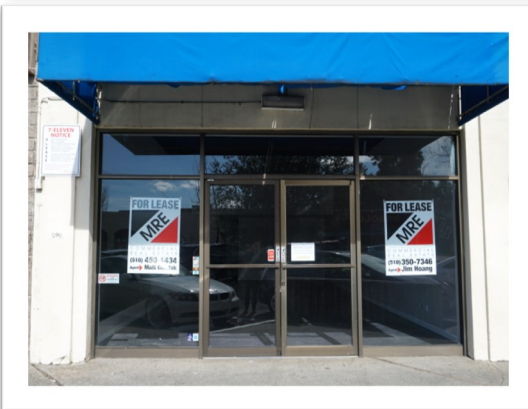


Clear and pleasant space with nice frontage on the busy corner of College Avenue and Russel Street. High traffic location, nice window line, open space with high ceilings.

Restroom in suite. Electrical and plumbing readily available. Lot parking available for customers.

Co-tenants include 7-11, Anton Salon and Elm Laundry. Immediate vicinity is abundant with quality merchants, service establishments, restaurants and cafés.

**BERKELEY STOREFRONT
2887 COLLEGE AVENUE
±860-SF OF OPEN SPACE
CORNER LOCATION
CUSTOMER PARKING**



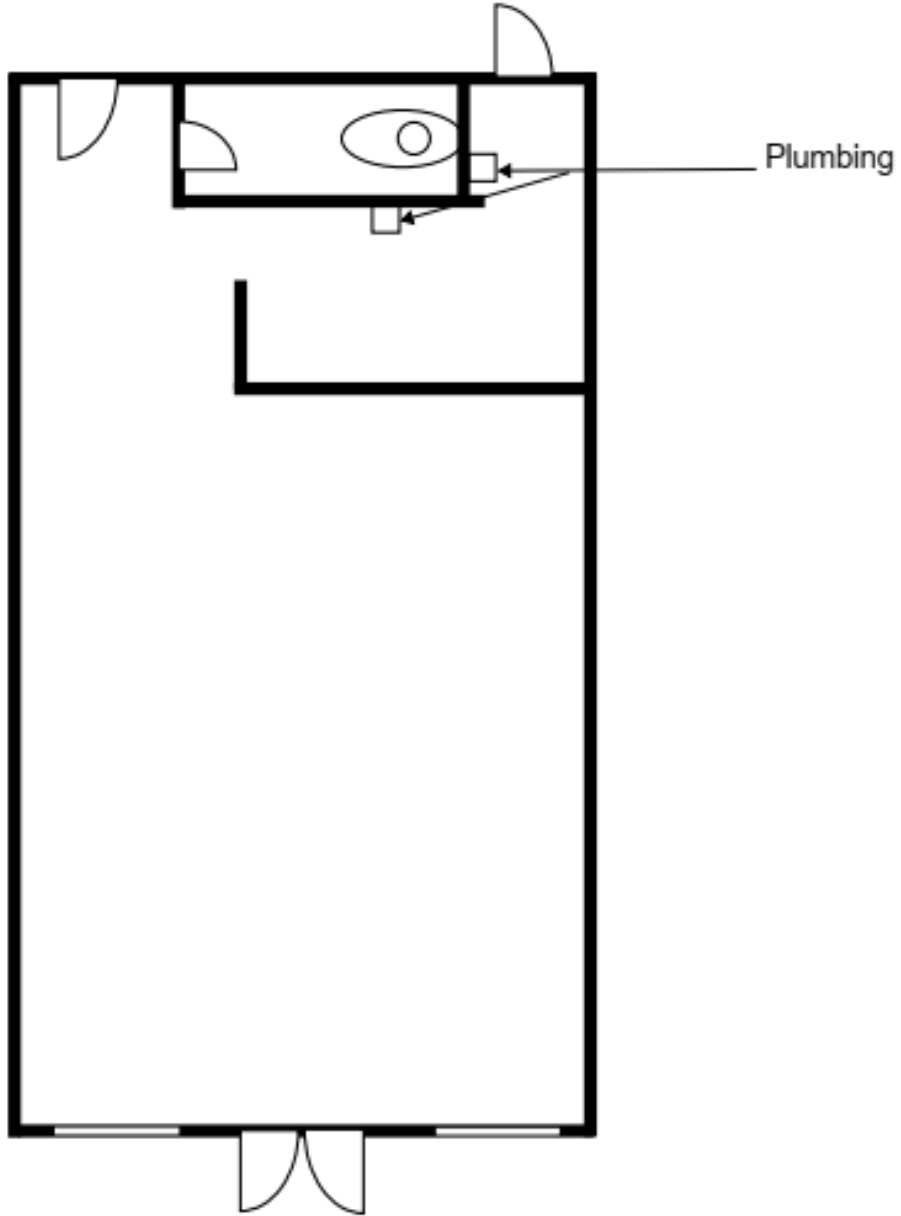
Matt Gondak
510-450-1434
mgondak@mrecommercial.com
(CA BRE No: 00832220)

Jim Hoang
510-350-7346
jhoang@mrecommercial.com
(CA BRE No: 01949301)

- [PHOTOS](#)
- [STREET VIEW](#)
- [SATELLITE](#)
- [MAP](#)
- [AREA BUSINESS](#)

All information furnished herein was provided by sources deemed reliable, but no representation is made or implied as to the accuracy thereof. All information herein is offered in good faith, but is subject to errors, omissions, change of price, prior sale, lease or financing, withdrawal without notice, rental or other conditions.

2887 College Ave, Unit 3
Berkeley, CA 94705
Retail Space



2887 College Ave, Unit 3
Berkeley, CA 94705
Approximately 860 SF
Retail