

# 1080 BASSETT ROAD

WESTLAKE, OHIO 44145



FOR LEASE • HIGH IMAGE OFFICE SPACE

WE ARE  
THE CENTER  
OF OFFICE



[CRESCOREALESTATE.COM](http://CRESCOREALESTATE.COM)

# 1080 BASSETT ROAD

WESTLAKE, OHIO 44145

## PROPERTY SPECIFICATIONS

TOTAL SF	9,204 SF (7,972 SF footprint)
OFFICE SF	3,594 SF (1,232 SF 2nd floor)
INDUSTRIAL SF	5,610 SF
LAND	0.9 acres
CONSTRUCTED	1987
CONSTRUCTION	Masonry/Block
CEILING HEIGHT	18'
DRIVE-IN DOORS	Three (3)
SPRINKLER	100% wet
LIGHTING	Fluorescent
HEAT	Gas radiant
AIR-CONDITIONING	Office
ROOF	Metal deck-comp
POWER	208V / 3P
PARKING	22 spaces
FLOOR	Concrete

AVAILABLE  
OFFICE SPACE  
2,378 SF

RENT  
\$10.50/PSF GROSS

LOT SIZE  
0.9 acres

## HIGHLIGHTS

- High image 9,204 SF industrial / commercial complex with 2,378 SF office space available
- Prestigious business park setting
- Excellent I-90 access via Crocker Bassett interchange
- Easy access to Crocker Park, shopping, restaurants and lodging

**JOSEPH V. BARNA, SIOR** / Principal / [jbarna@crescorealestate.com](mailto:jbarna@crescorealestate.com) / 216.525.1464  
**PAUL DIVINCENZO** / Vice President / [pdivincenzo@crescorealestate.com](mailto:pdivincenzo@crescorealestate.com) / 216.525.1470

**WE ARE  
THE CENTER  
OF OFFICE**

*Independently Owned and Operated / A Member of the Cushman & Wakefield Alliance*

Cushman & Wakefield Copyright 2018. No warranty or representation, express or implied, is made to the accuracy or completeness of the information contained herein, and same is submitted subject to errors, omissions, change of price, rental or other conditions, withdrawal without notice, and to any special listing conditions imposed by the property owner(s). As applicable, we make no representation as to the condition of the property (or properties) in question.



# 1080 BASSETT ROAD

## WESTLAKE, OHIO 44145



**JOSEPH V. BARN, SIOR** / Principal / [jbarna@crescorealestate.com](mailto:jbarna@crescorealestate.com) / 216.525.1464  
**PAUL DIVINCENZO** / Vice President / [pdivincenzo@crescorealestate.com](mailto:pdivincenzo@crescorealestate.com) / 216.525.1470

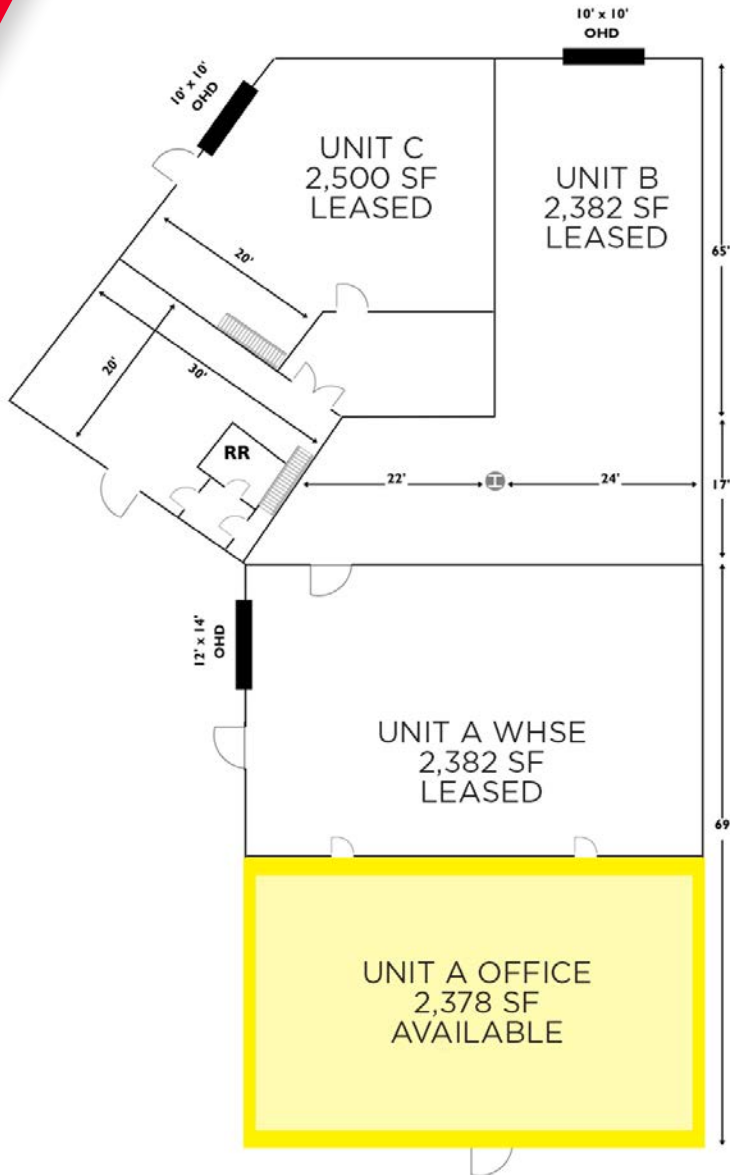
**WE ARE  
 THE CENTER  
 OF OFFICE**

*Independently Owned and Operated / A Member of the Cushman & Wakefield Alliance*

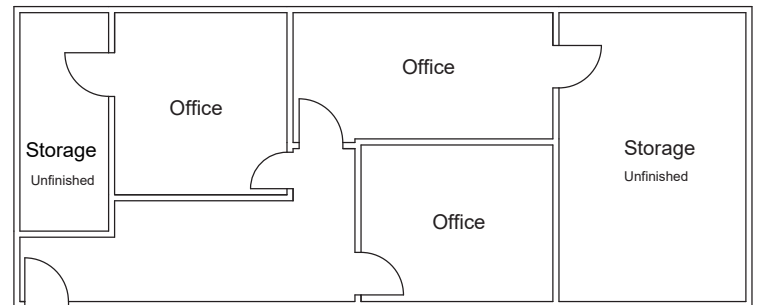
Cushman & Wakefield Copyright 2018. No warranty or representation, express or implied, is made to the accuracy or completeness of the information contained herein, and same is submitted subject to errors, omissions, change of price, rental or other conditions, withdrawal without notice, and to any special listing conditions imposed by the property owner(s). As applicable, we make no representation as to the condition of the property (or properties) in question.

# 1080 BASSETT ROAD

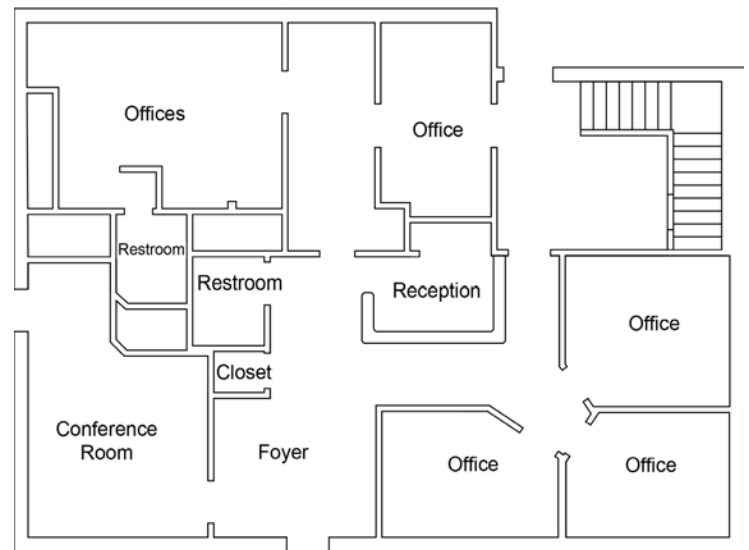
## WESTLAKE, OHIO 44145



Second Floor



### OFFICE LAYOUT



**JOSEPH V. BARN**, SIOR / Principal / [jbarna@crescorealestate.com](mailto:jbarna@crescorealestate.com) / 216.525.1464  
**PAUL DIVINCENZO** / Vice President / [pdivincenzo@crescorealestate.com](mailto:pdivincenzo@crescorealestate.com) / 216.525.1470

**WE ARE  
 THE CENTER  
 OF OFFICE**

*Independently Owned and Operated / A Member of the Cushman & Wakefield Alliance*

Cushman & Wakefield Copyright 2018. No warranty or representation, express or implied, is made to the accuracy or completeness of the information contained herein, and same is submitted subject to errors, omissions, change of price, rental or other conditions, withdrawal without notice, and to any special listing conditions imposed by the property owner(s). As applicable, we make no representation as to the condition of the property (or properties) in question.