



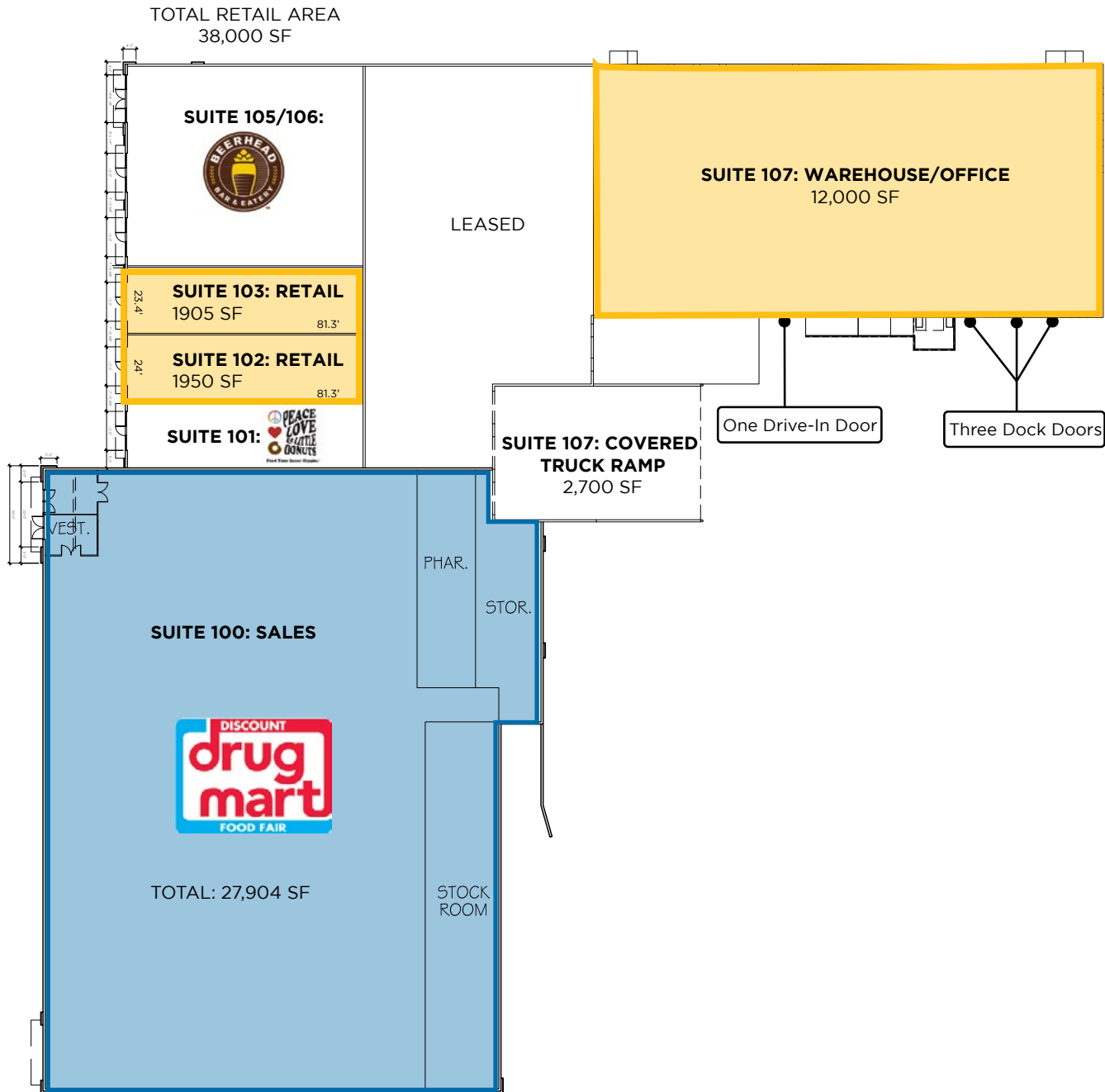
### PROPERTY HIGHLIGHTS

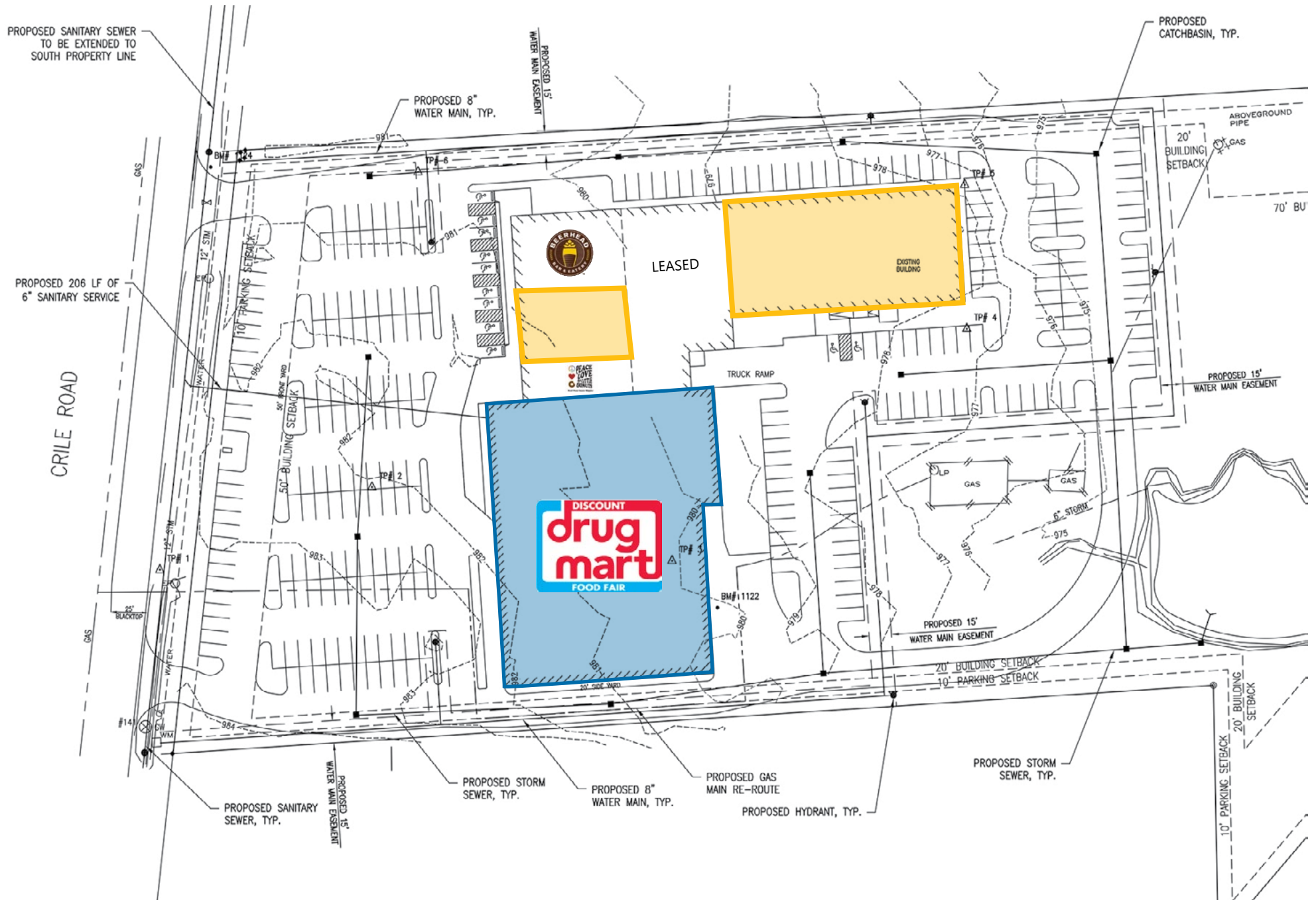
- As of 2014, Concord Township's population is 18,245 people. Since 2000, it has had a population growth of 46.76 percent.
- 1 mile average household income = \$146,685
- 60,003 SF retail shopping center anchored by Discount Drug Mart 'coming soon'
- Located within this exciting new retail & residential growth trade area
- Capital Parkway Road project nearing completion for superior access
- Ideal retail space with a unique opportunity for warehouse/office

### TRADE AREA DEMOGRAPHICS

	POPULATION	AVG. HH INCOME	DAYTIME EMPLOYEES
<b>7 Minutes</b>	42,087	\$100,890	18,896
<b>15 Minutes</b>	184,561	\$90,461	102,640
<b>20 Minutes</b>	304,073	\$84,721	155,486

### QUICK LINKS (click to view)









I-90 E Exit Ramp to Crile Rd

QUAIL HOLLOW COUNTRY CLUB

PLAYERS CLUB CONDOMINIUM

GRISTMILL VILLAGE

PRESERVE AT QUAIL HOLLOW CONDOMINIUM

CRILE CROSSING DEVELOPMENT

Logos for Starbucks Coffee, 82B Burgers & Beer, Pizza Roto, Great Clips, Subway, Petvalu, Chipotle Mexican Grill, and Cleveland Yoga.

100 SUITES COMING SOON

NEW CAPITAL PARKWAY INTERCHANGE IS COMPLETE

ROAD ENTRANCE

**SITE**

**KEY**

- FUTURE TOWN CENTER
- BUSINESS CORRIDOR
- HYGROVE VILLAS CONDOS - 50 UNITS WITH CRILE ROAD EXTENSION PROVIDING ACCESS TO HUNDREDS OF HOMES TO CRILE RD

Redhawk GRILLE

Logos for Reiders, Waffle House, nou-veau, Coldwell Banker, Sunny Street Cafe, and First Federal Lakewood.

COMING SOON

44

52,890 VPD

26,990 VPD

90

CRILE RD

ricerca

AVERY DENNISON

Lake Health

HOMWOOD SUITES

DE HORA

Concord Village Skilled Nursing & Rehabilitation

VISTA SPRINGS

Ranpak

Pressure Technologies

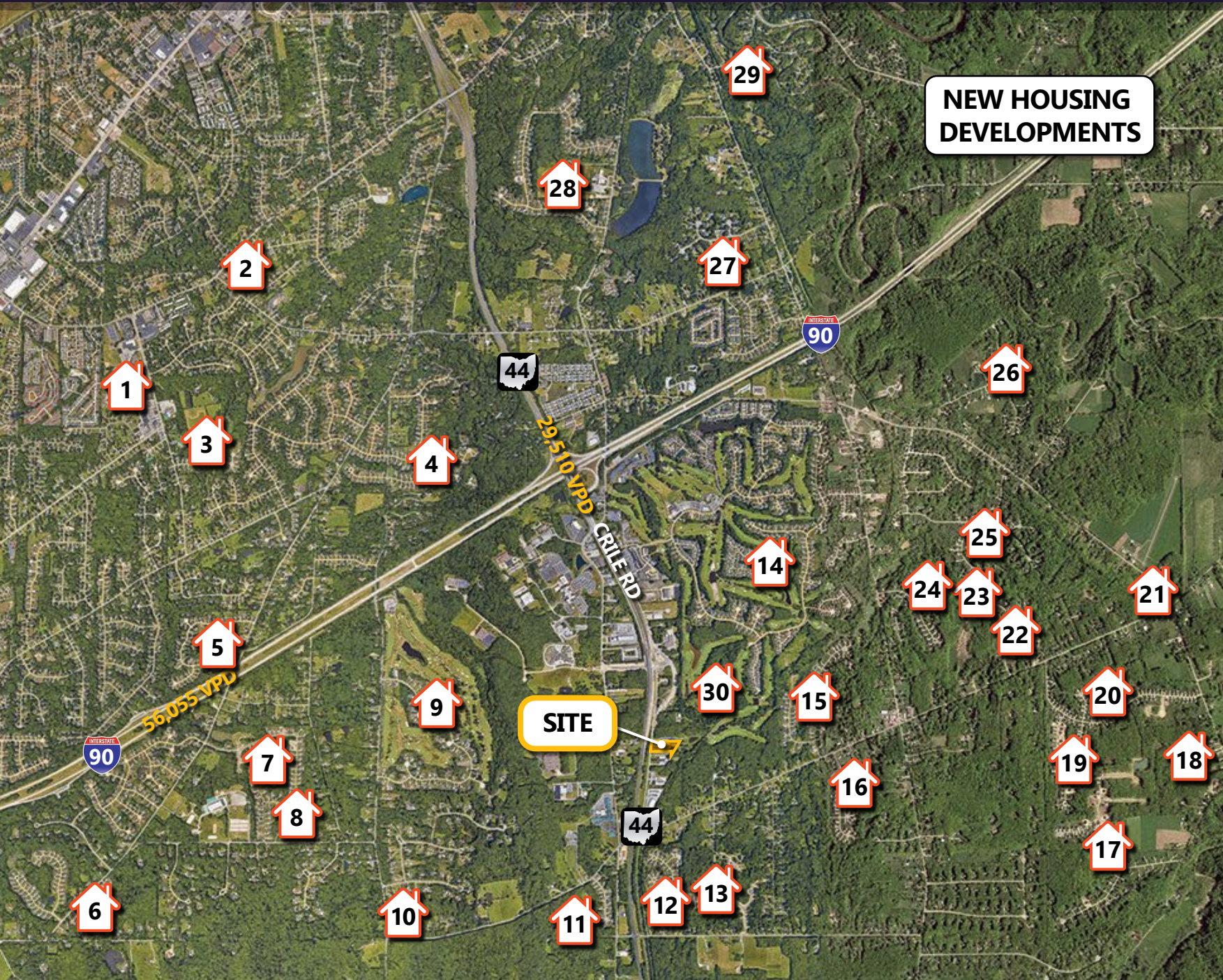
fivescnetic

7 ELEVEN

Comfort INN

Goddard School





**NEW HOUSING DEVELOPMENTS**

#	Subdivision	Lot
1	Gabriel's Edge	58
2	Aria's Wayt	37
3	Brookfield	35
4	Hermitage Bluffs	72
5	Concord Farms	9
6	Little Mountain Preserve	14
7	Mountainside Farms	109
8	Mountaintop Estates	14
9	Little Mountain Country Club	80
10	Hermitage Woods	6
11	18th Century Village	25
12	Cambden Creek	56
13	Orchard Springs	48
14	Quail Hollow Ph 10	51
14	Quail Hollow Ph 11	48
14	Quail Hollow Ph 12	18
14	Quail Hollow Ph 5	13
14	Quail Hollow Ph 9	47
15	Nature Preserve N	97
16	Nature Preserve S	42
17	Concord Ridge	74
18	Concord Ridge Splits	10
19	Crossroads at Summerwood	25
20	Summerwood	125
21	Concord Glen Splits	10
22	Woodcrest	22
23	Stoneridge Estates	52
24	Noble Ridge	48
25	Cali Woods	56
26	Ledgewood Crossing	37
27	Bridgecreek Estates	13
28	Ellison Creek	120
29	Vie'en Provence	5
30	Hygrove Villas	50